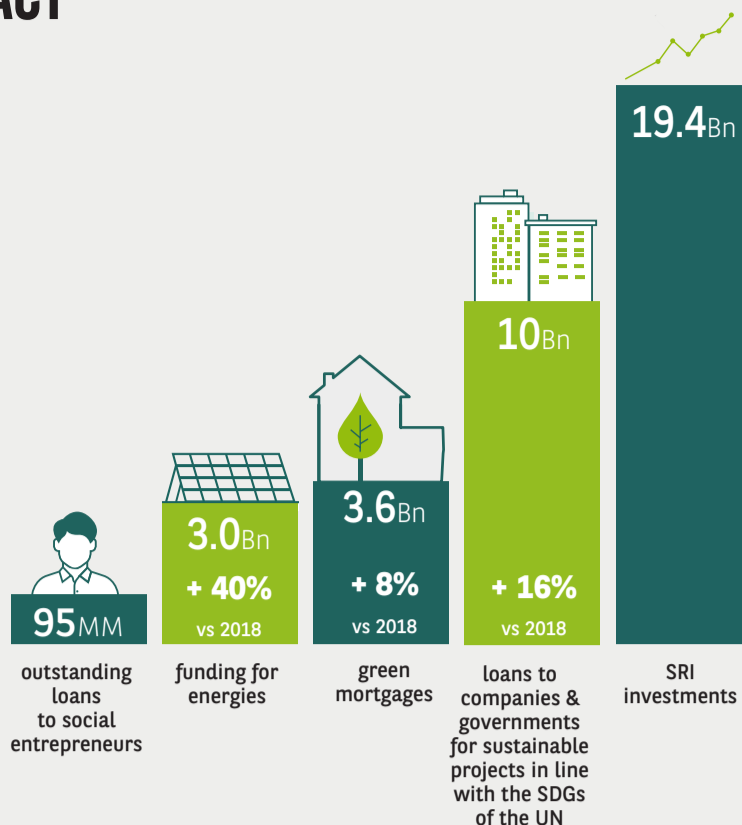


# 2019 SUSTAINABILITY PASSPORT FOR BNP PARIBAS FORTIS

- Beware that more information behind certain numbers and data is available with a simple click -

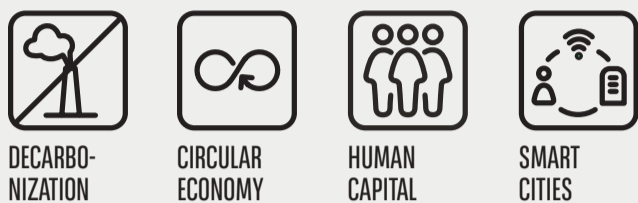
## INCREASING OUR POSITIVE IMPACT



## SUSTAINABLE BUSINESS COMPETENCE CENTRE

created to **accompany clients** in their **transition** to sustainable business models

### BUSINESS FOCUS ON



**160**  
SUSTAINABLE  
PROJECTS

**848MM**  
SUSTAINABLE  
CREDIT

## ENCOURAGE DIVERSITY AND INCLUSION - INITIATIVES 2019



### PREVENTION OF PREJUDICES

On the occasion of 'Diversity Week', internal campaign based on the prevention of prejudices



### CONTRACTS IN BRAILLE

Documents and contracts in braille, or in spoken language, available for blind clients or visually impaired people



### CHARTER 'UNSTEREOTYPE COMMUNICATION'

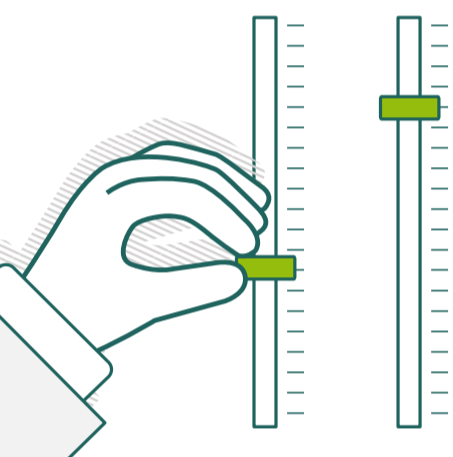
Initiative of the 'Union des Annonceurs (UBA)'



### CHARTER 'GENDER DIVERSITY IN FINANCE'

For a better balance between men and women at all levels in the company

## DECREASING OUR NEGATIVE IMPACT



### 943 COMPANIES EXCLUDED FROM THE BANK'S RELATIONS

stringent monitoring of investments and financing activities in sensitive sectors



## GREENHOUSE GAS EMISSIONS

(as teq CO2/FTE)

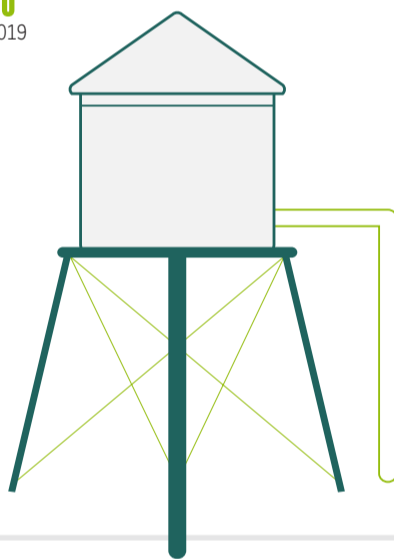
**-31%**  
2012 - 2019

**2.30**  
CO2 teq/ETP

### CARBON-NEUTRAL

since 2017

by offsetting residual emissions through investments projects to reduce CO<sub>2</sub> in India and Kenya



## ENERGY

In buildings (Corporate buildings, Branches and Data Centers):

**74%**  
of GHG emissions

**-29%**  
kWh/m<sup>2</sup>

**100%**  
GREEN  
ELECTRICITY



**CERTIFICATION ISO 14001**  
Facility Management Belgium

**ENTREPRISE ECODYNAMIQUE**  
3 Buildings in Brussels

**BREEAM**  
Office building (Charleroi), flagship office building (Montagne du Parc - Brussels)



### BUSINESS TRAVEL

**26%** of GHG emissions



### PUBLIC TRANSPORTATION

**76,2%** of employees working in the office buildings in Brussels



### BIKES

**10%** of staff



### USE OF CARS

**-17%** since 2008



### HOME WORKING

**3,8 days** per month/employee



### CAR FLEET'S CO<sub>2</sub>

**99gr/km** on average



### PAPER CONSUMPTION

**-55%** since 2012



### ECO COACHES

**645** coaches provide guidance about energy, mobility, paper, waste

## COMMITTED



'BELGIAN SDG CHARTER'

2016

GREEN DEAL 'ACHATS CIRCULAIRES'

2017

GREEN DEAL 'ENTREPRISES ET BIODIVERSITÉ'

2018

CHARTER 'L'ALLIANCE POUR UNE SOCIÉTÉ SANS TABAC'

2019

## SOLIDARITY (PHILANTHROPY)

### FOUNDATION BNP PARIBAS FORTIS

Through donations to associations since 2010, support provided to

**20,000** youngsters touched by precarity

### #ourjob2

**14,195** participations to actions benefitting the environment or about social responsibility

**1.5 MM**

from the management fee of BNP Paribas Fortis Private Banking's fund of SRI funds transferred to associations through Fonds Venture Philanthropy

### MICROSTART

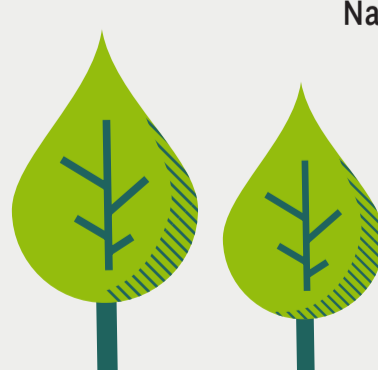
Since 2011, **40 MM** granted to micro entrepreneurs

## BIO-DIVERSITY

**140,000** new trees

### RESULTS OF PARTNERSHIPS WITH

Reforest'Action, Natagora/Natuurpunt, WeForest



## BNP PARIBAS FORTIS IS PART OF THE GROUP BNP PARIBAS

### AWARDS & ACKNOWLEDGEMENTS



EUROMONEY 2019

'The World's Best Bank for Corporate Responsibility'

GLOBAL 100

**31st** (2<sup>nd</sup> European bank)

ROBECOSAM - SUSTAINABILITY INVESTING

**4th** European bank



The bank for a changing world