

Esmee Master Issuer

Report date: 30 June 2012

PORTFOLIO REPORT

Portfolio Report:

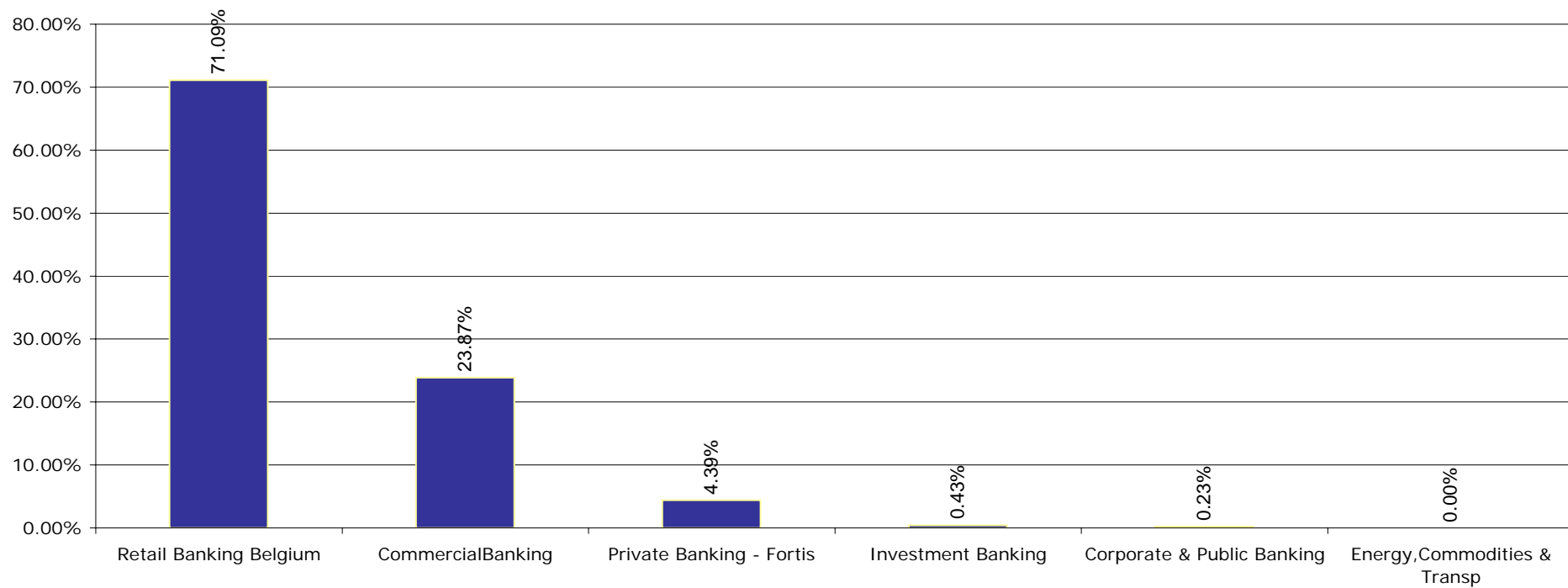
Reporting month as of ultimo:

Esmee Master IssuerJune 2012

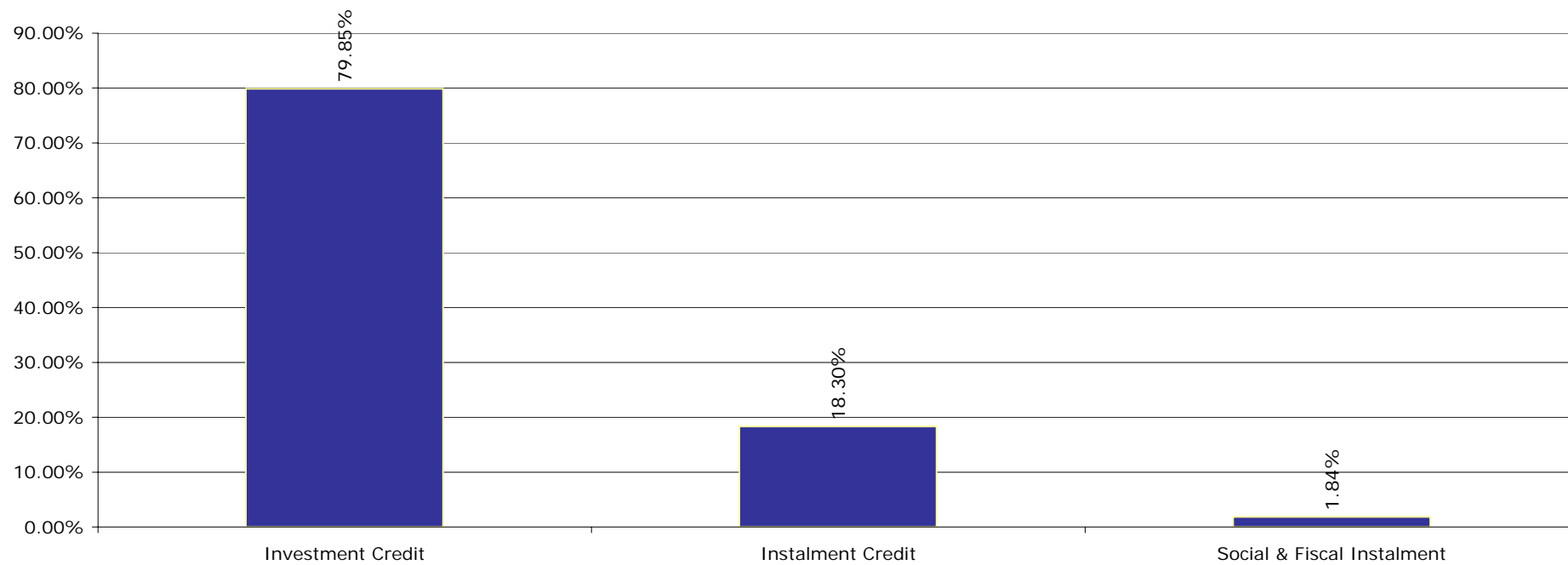
Key Characteristics

Oustanding Principal Balance (EUR)	7,857,624,686
Average Loan Size (EUR)	59,526
Average Client Size (EUR)	112,864
Number of Loans	132,003
Number of Clients	69,620
Weighted Average PD (%)	4.09%
Weighted Average LGD (%)	10.44%
Weighted Average Interest Rate (%)	4.43%
Weighted Average Seasoning (years)	3.83
Weighted Average Remaining Maturity (years)	8.01
Weighted Average WAL (years)	4.34
Yearly Expected Loss (%) (WAPD*WALGD)	0.43%
Expected Loss (%) (WAPD*WALGD*AvgLife)	1.85%
WA Tot Collateral Ratio	214.55%

Business Unit



Products



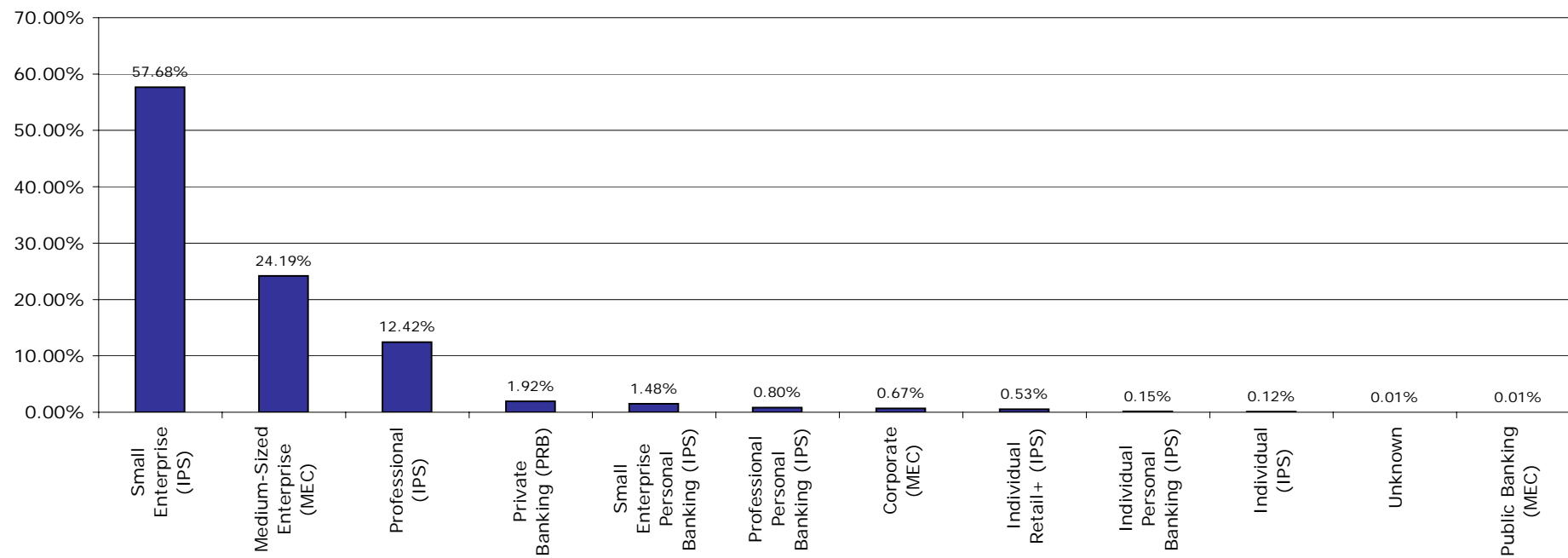
Portfolio Report:

Reporting month as of ultimo:

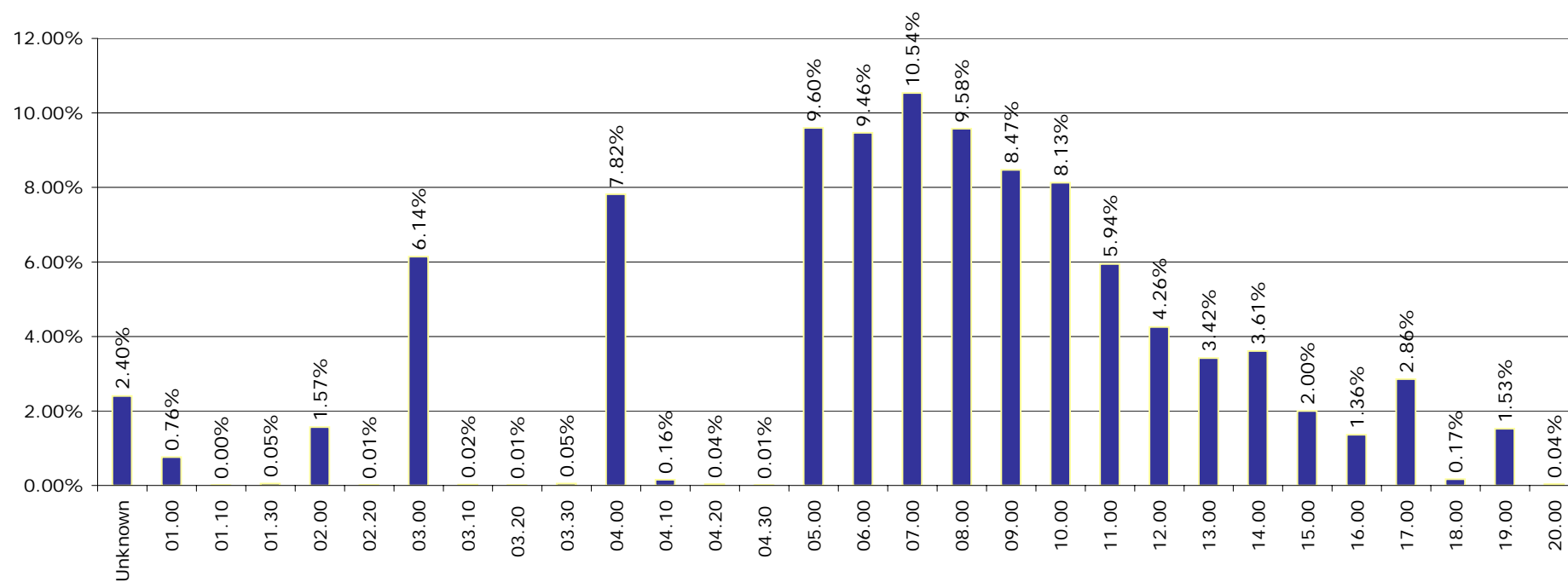
Esmee Master Issuer

June 2012

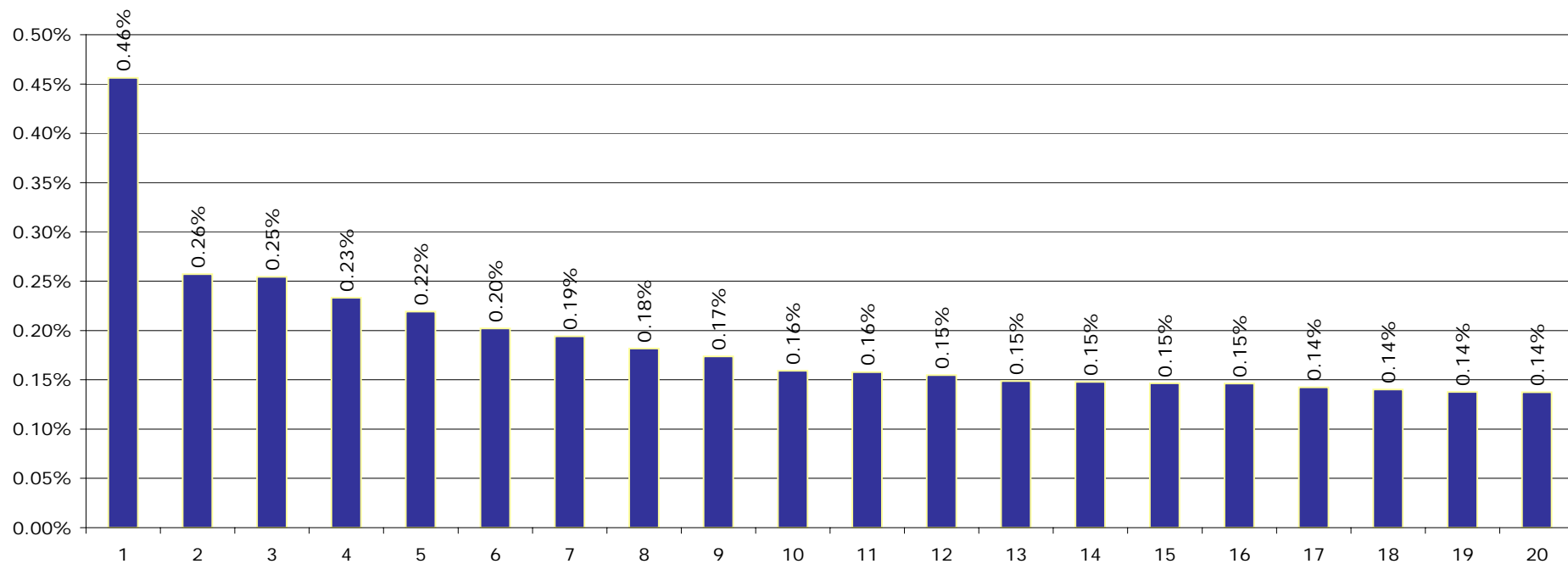
Market Segment



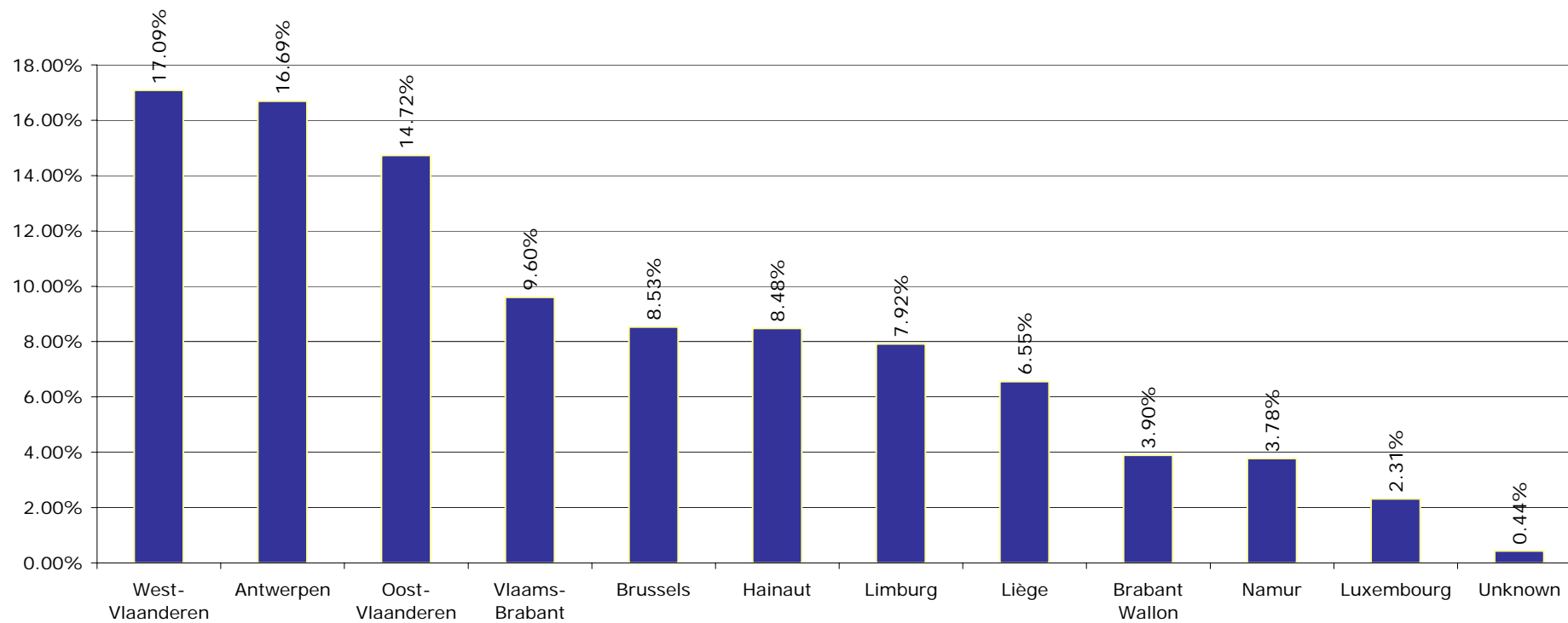
Internal Rating



Top 20 Clients



Client Province



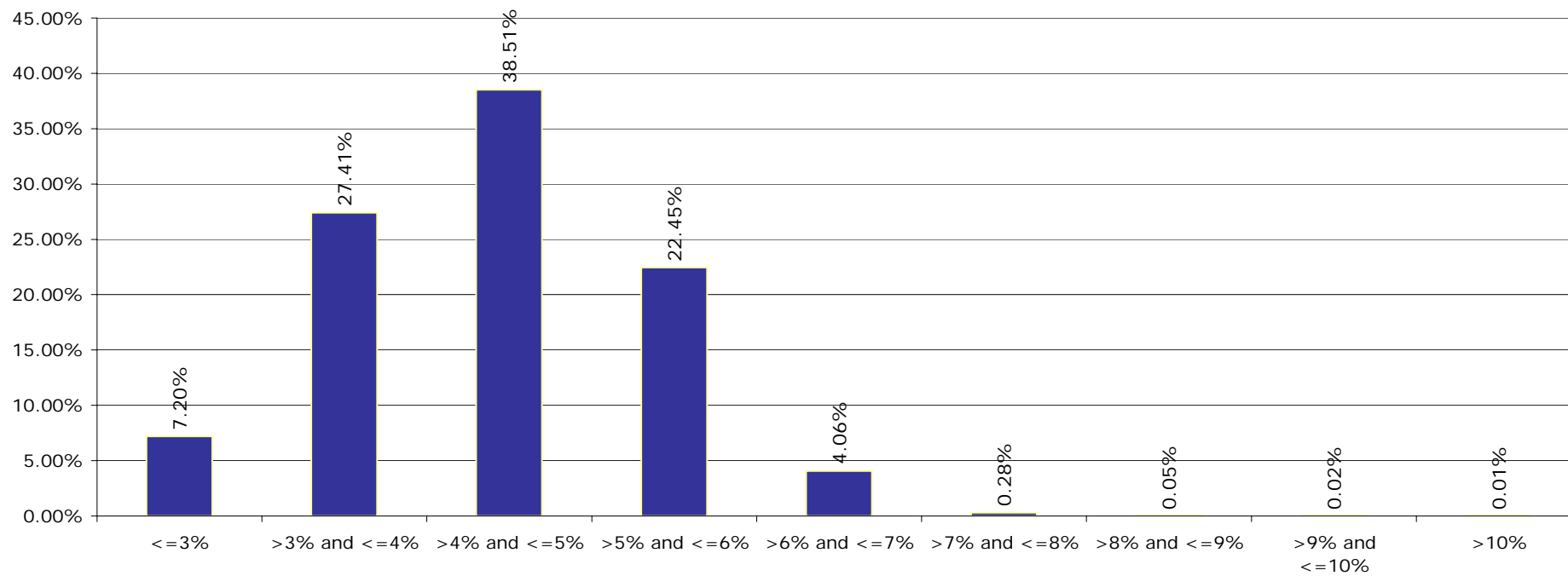
Portfolio Report:

Reporting month as of ultimo:

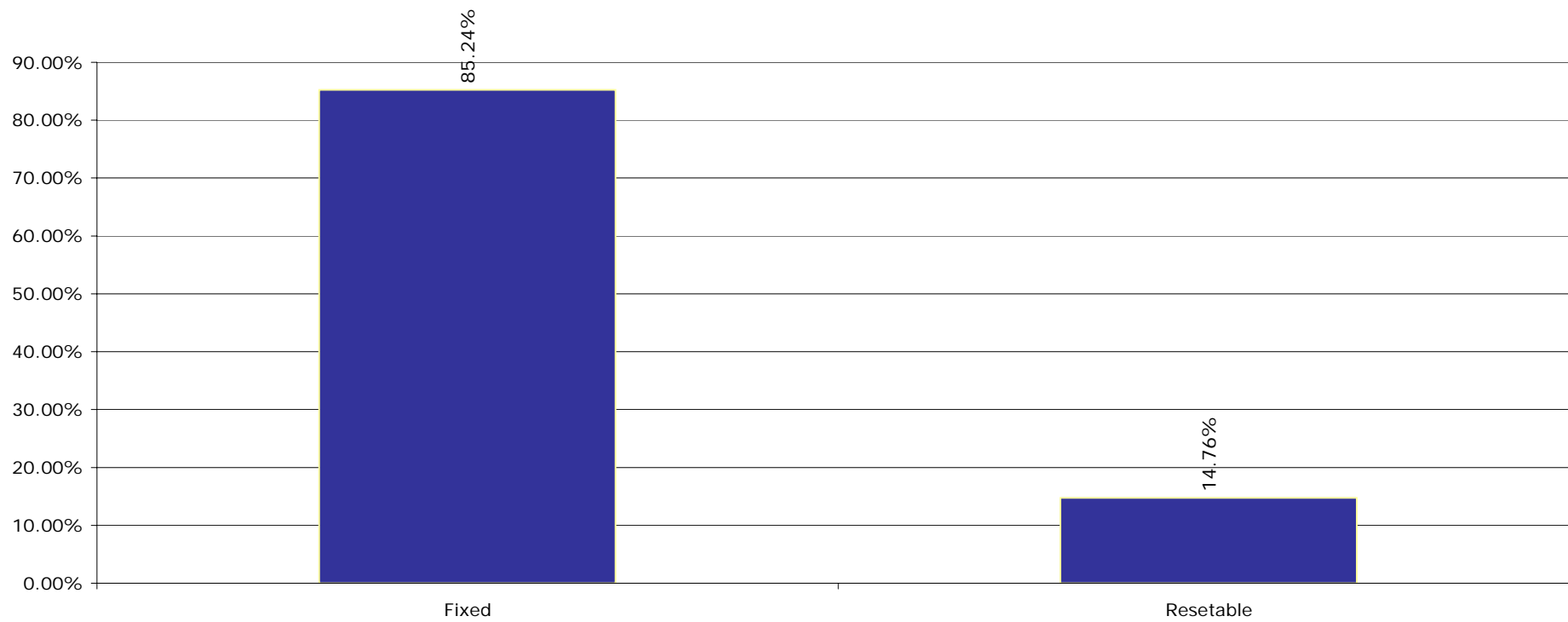
Esmee Master Issuer

June 2012

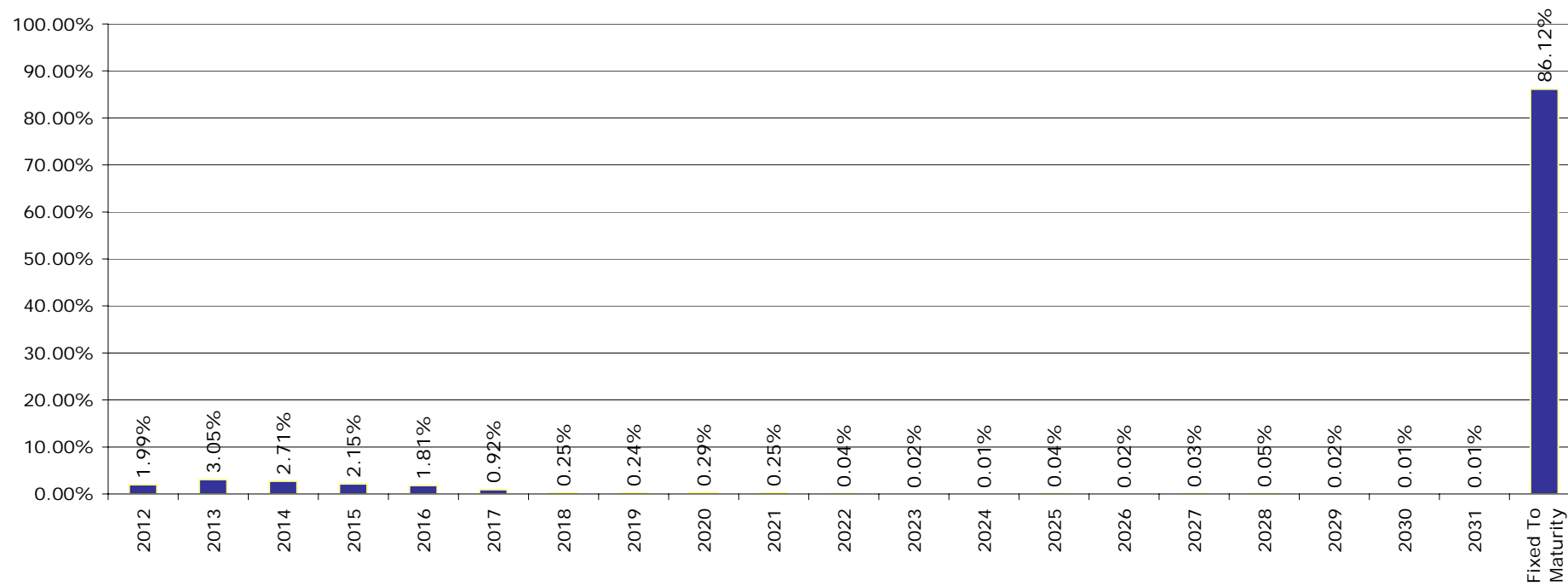
Interest Rate



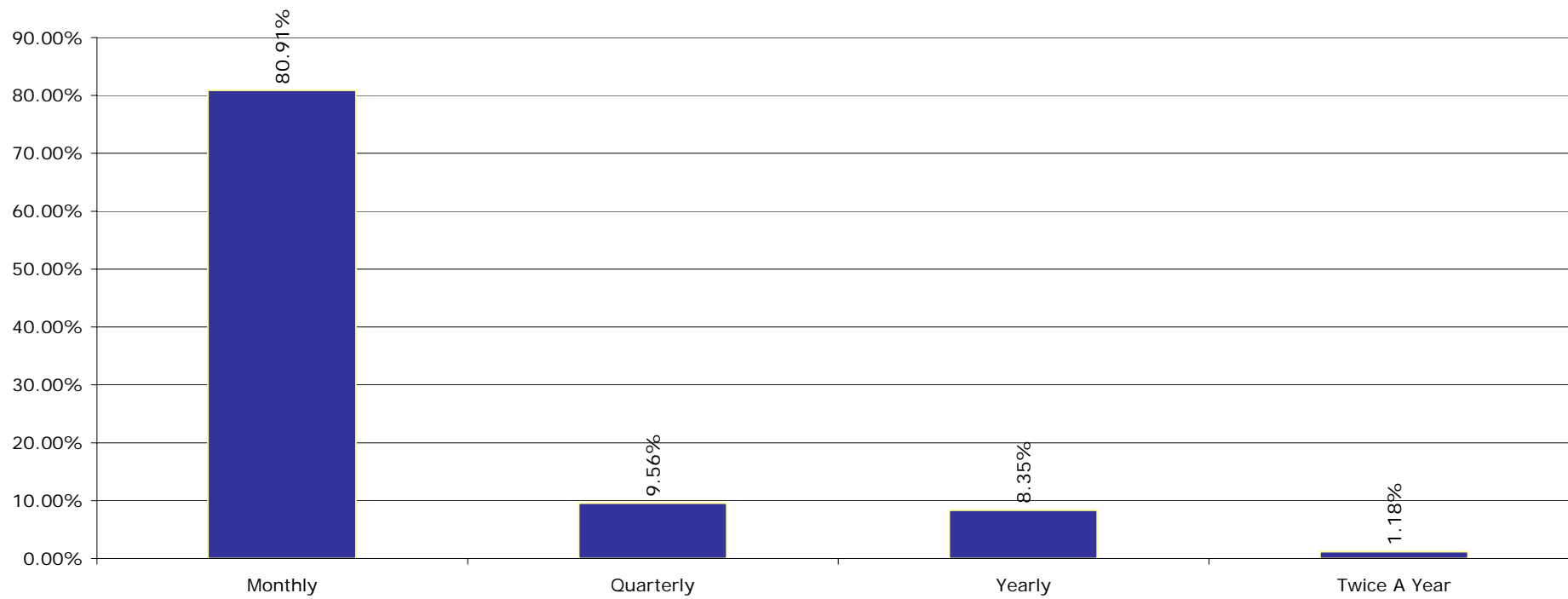
Interest Rate Type



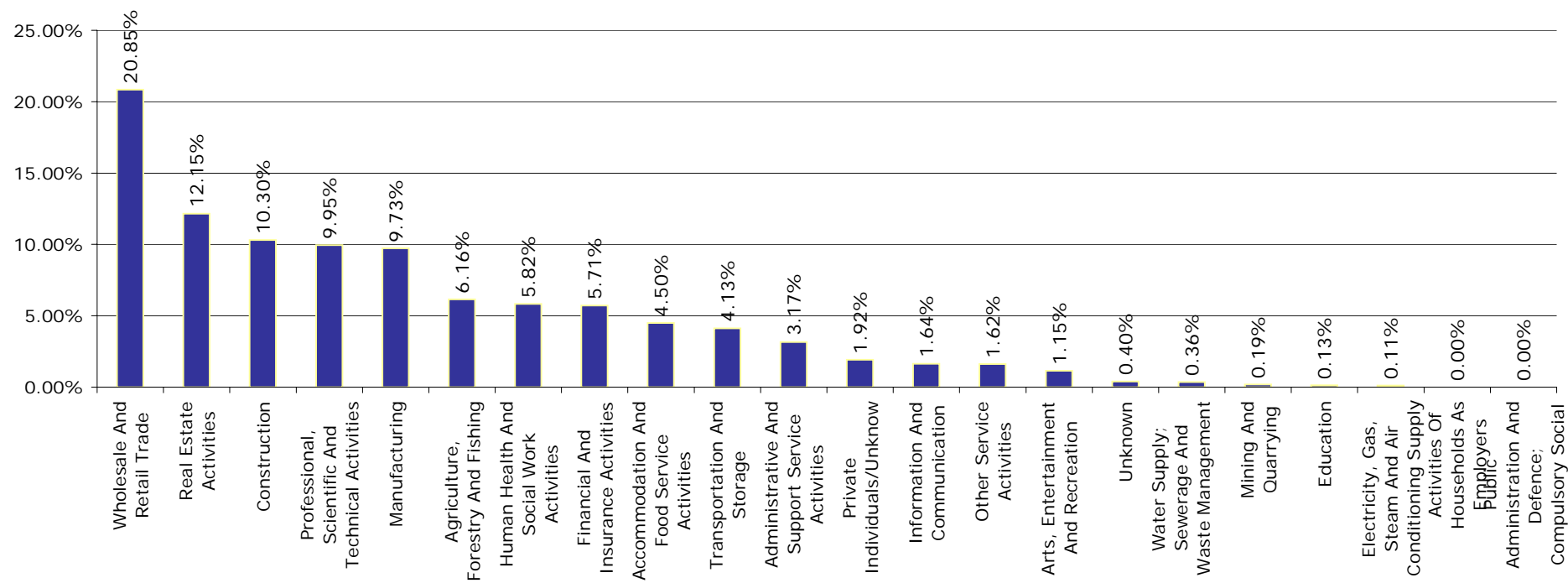
Next Rest Date



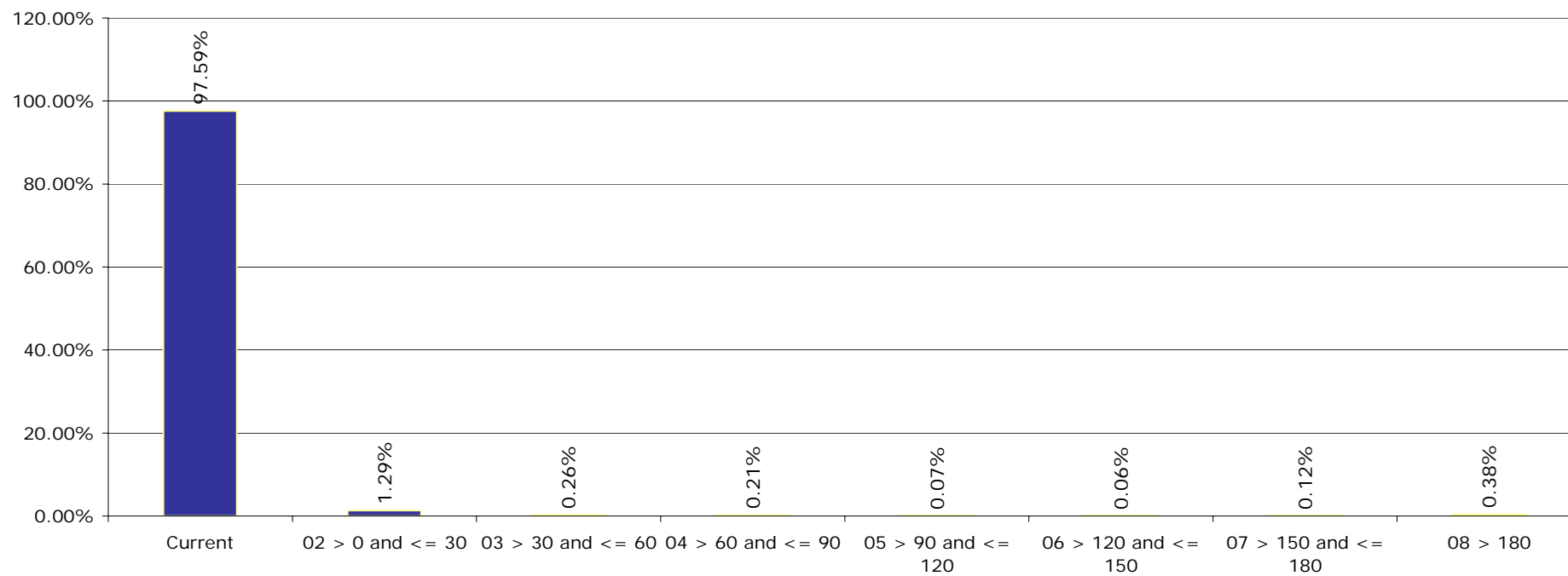
Int. Payment Frequency



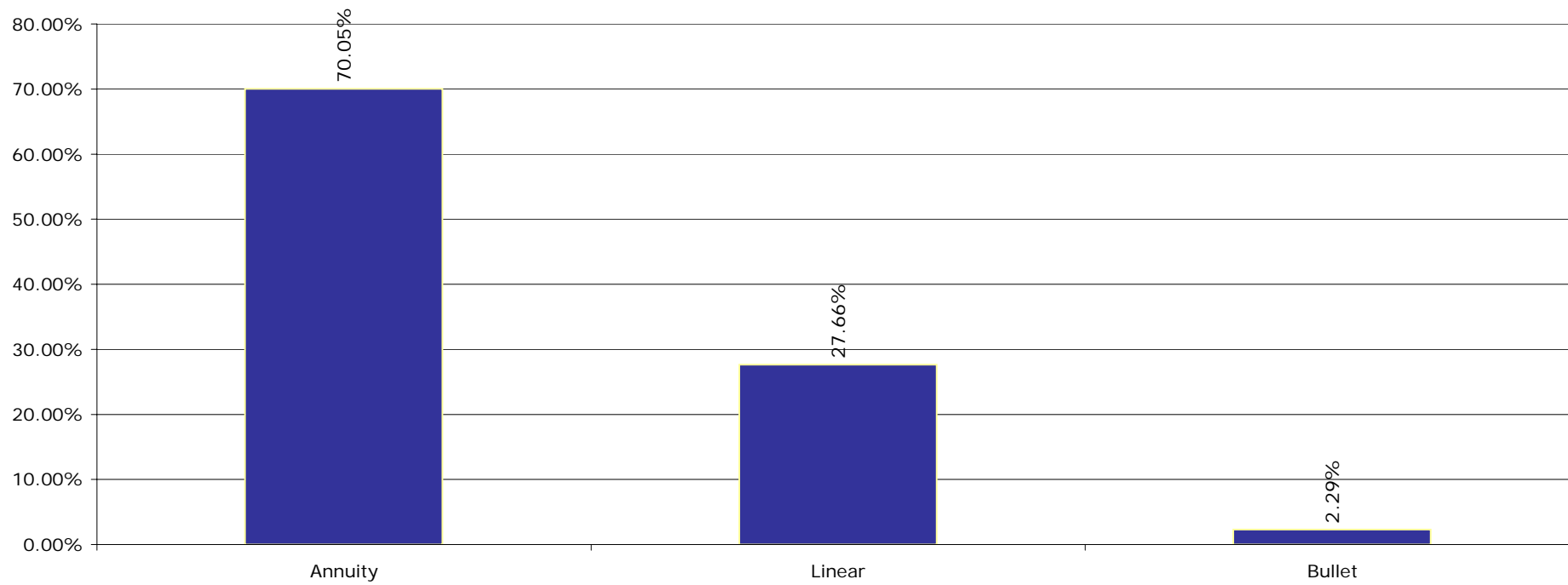
Sectors (Nace rev.2)



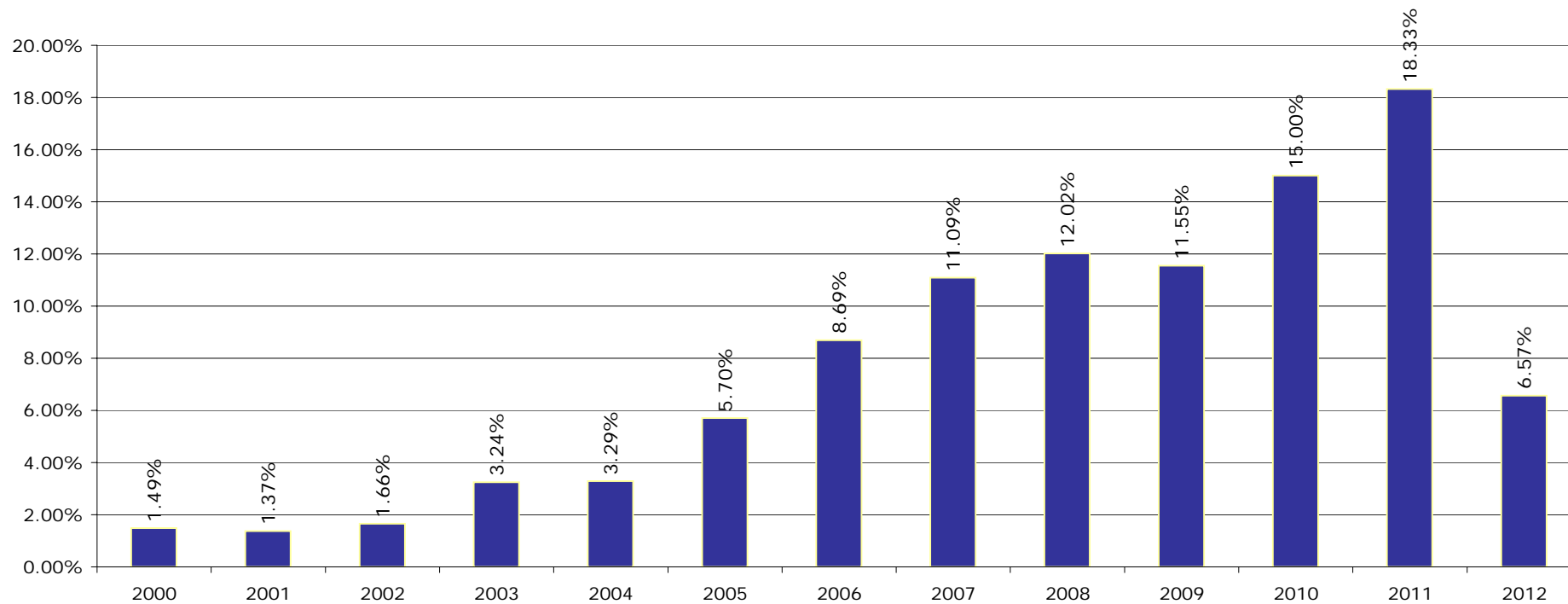
Arrears



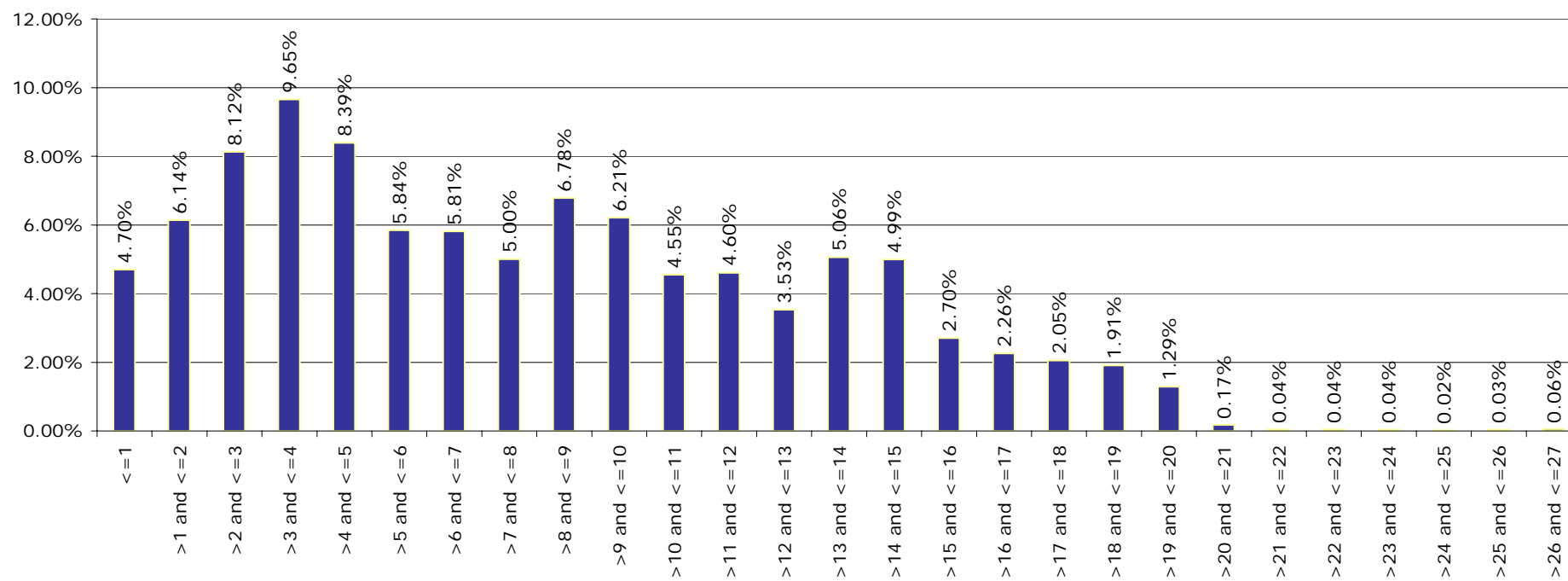
Redemption Type



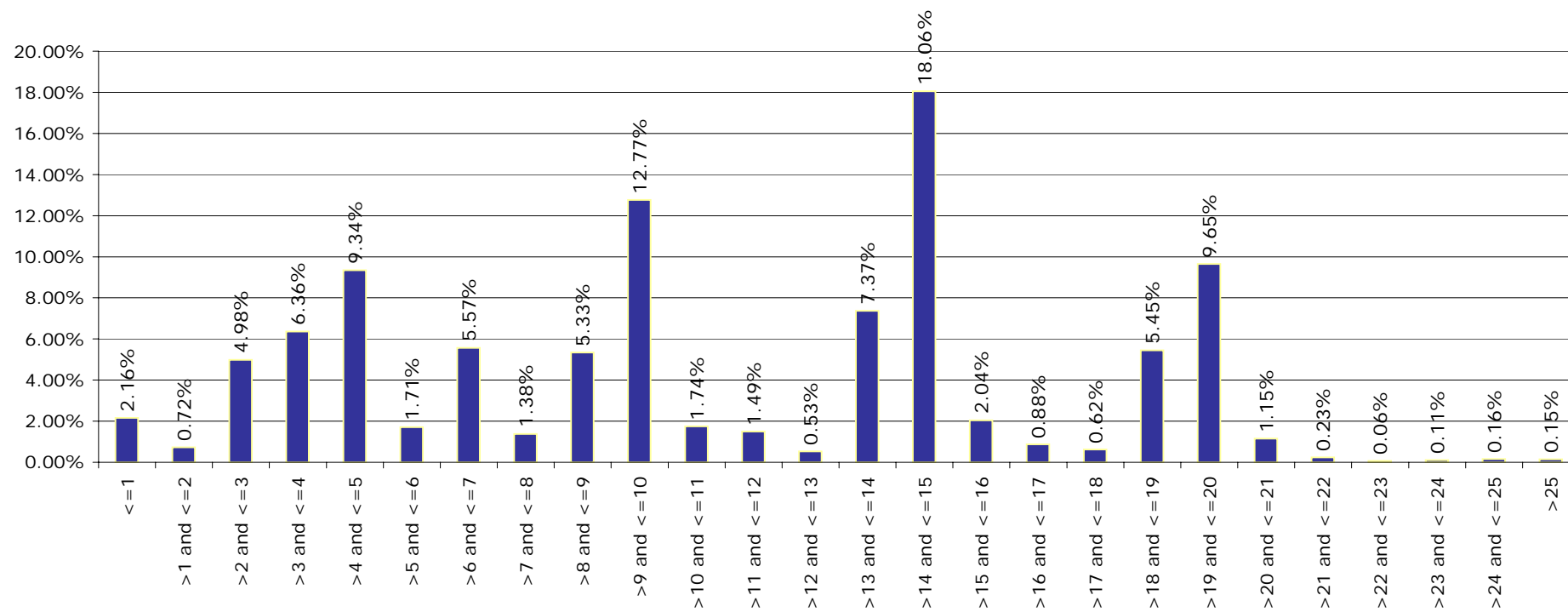
Origination Year



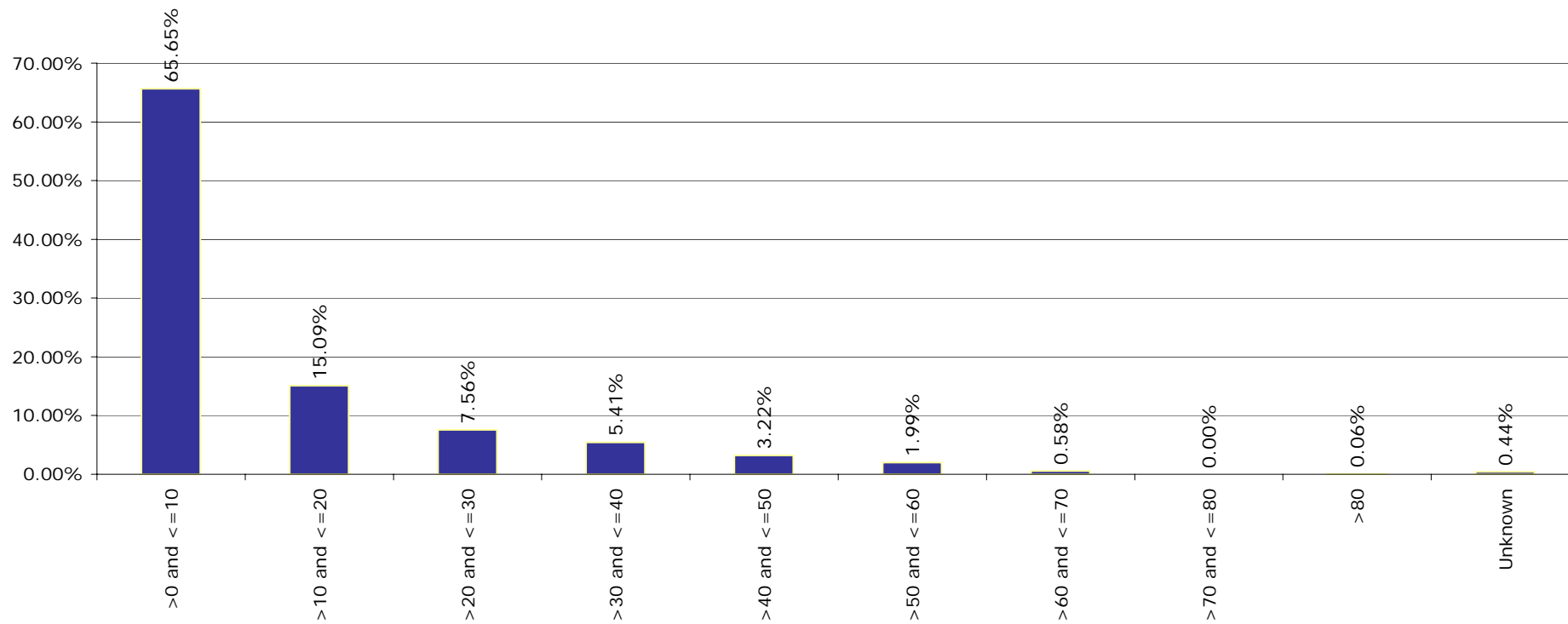
Remaining Maturity



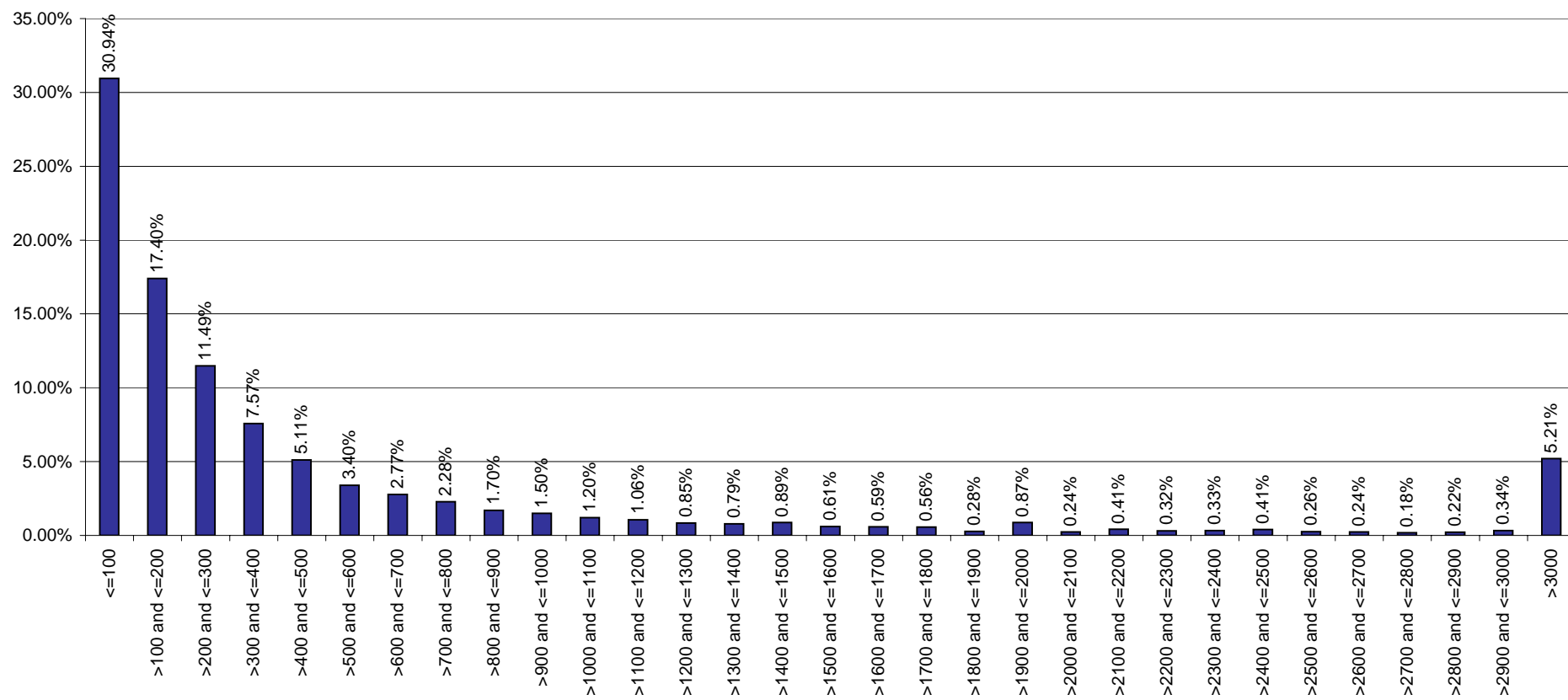
Original Maturity



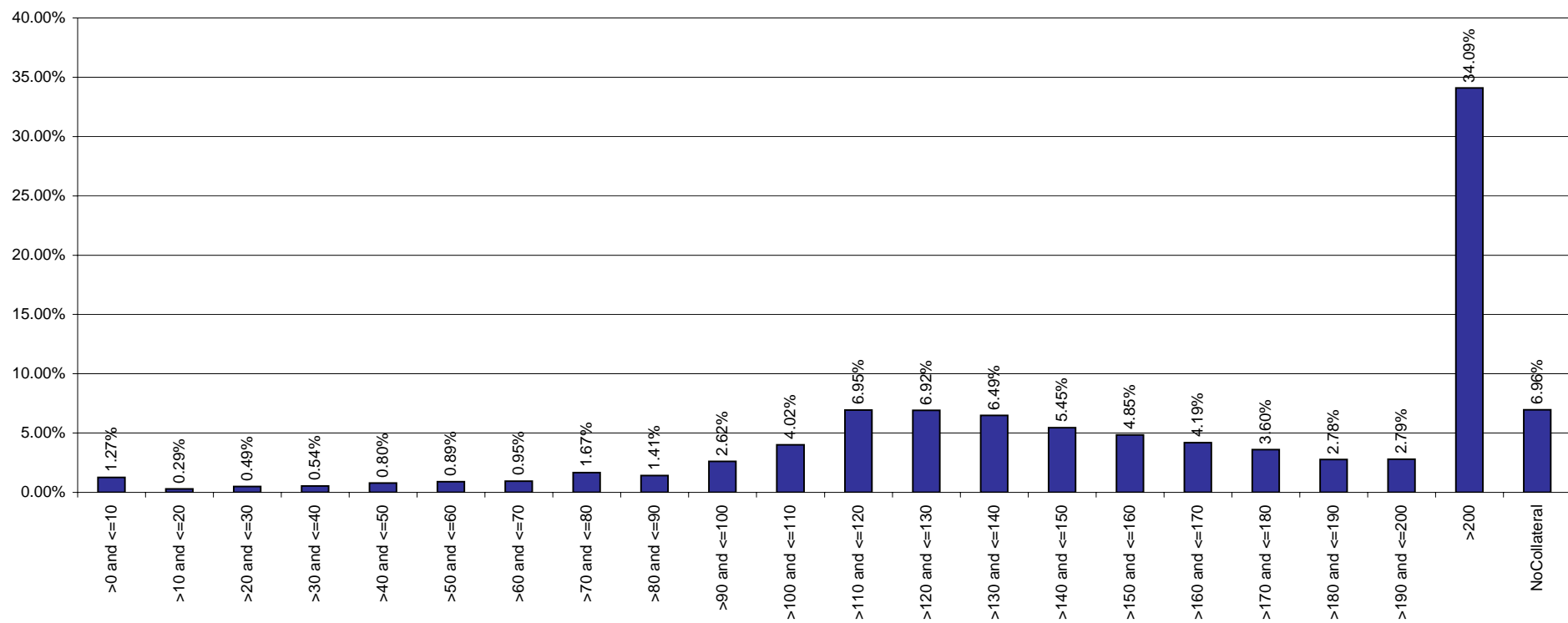
LGD



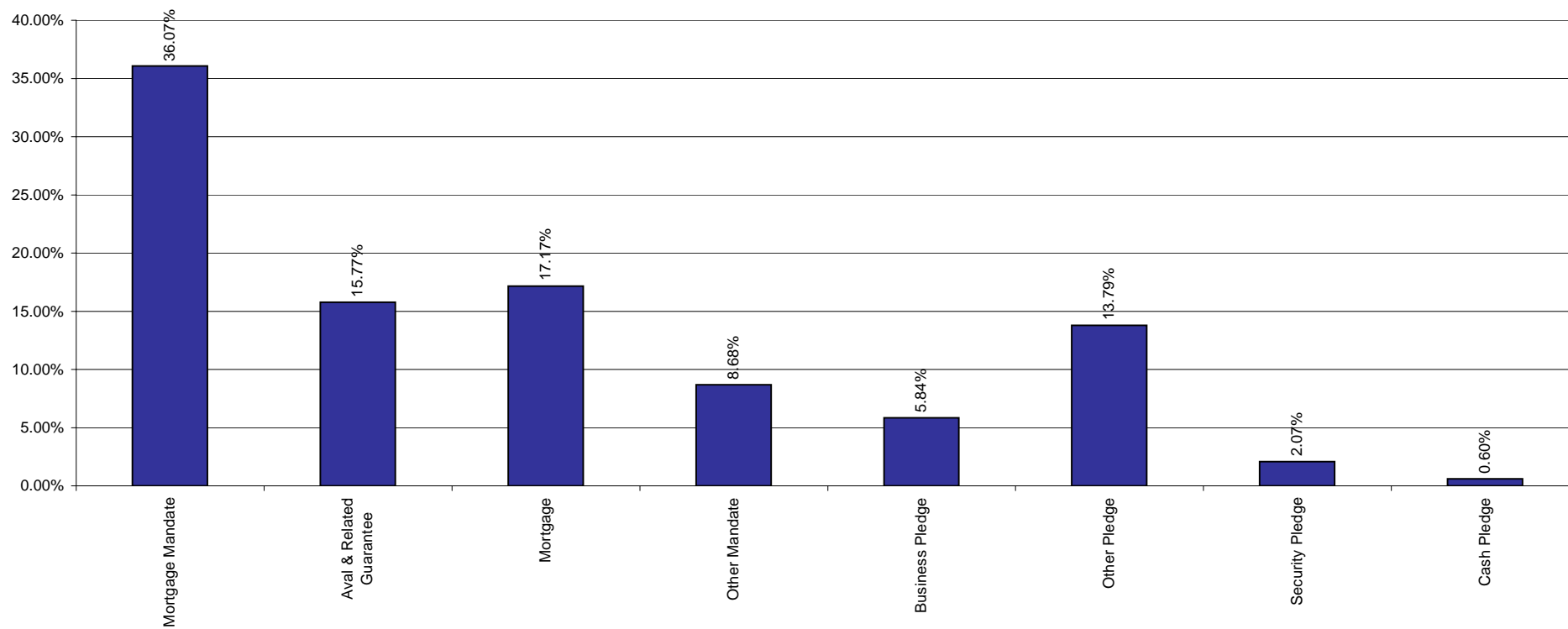
Size of Loans



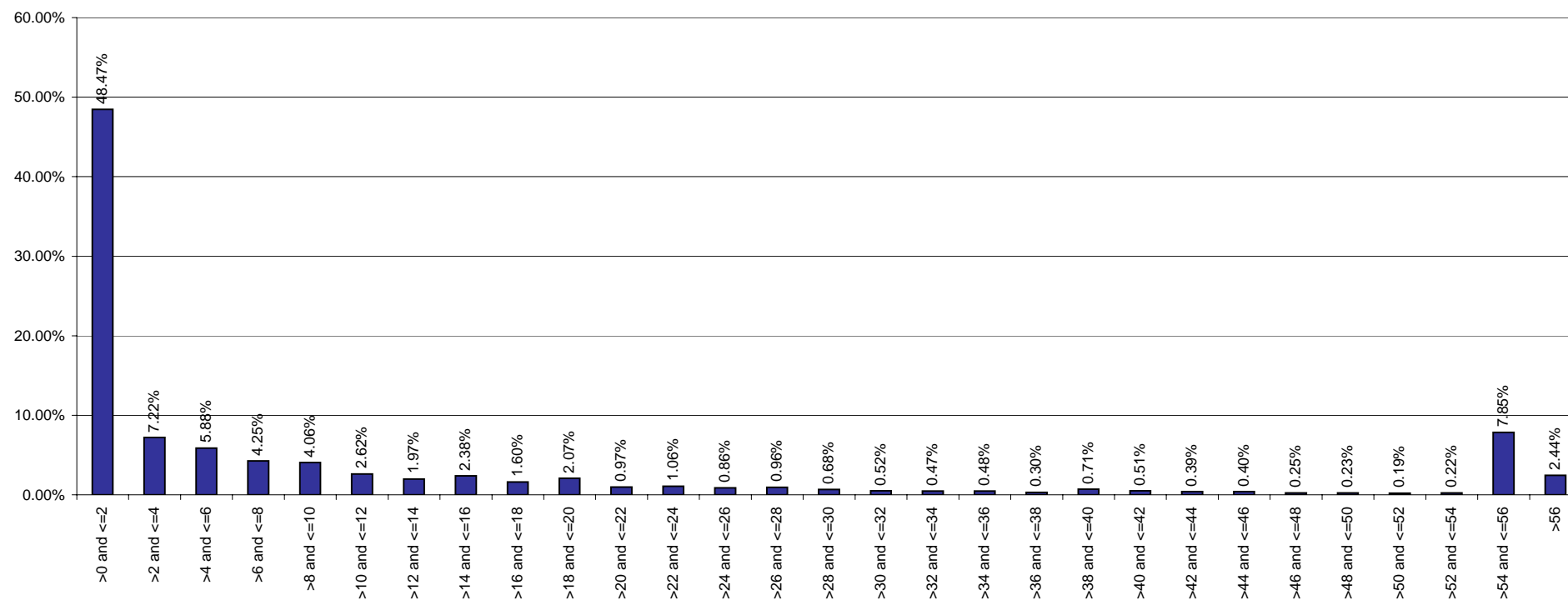
Collateral Ratio



Collaterals



Yearly Expected Loss



Esmee Master Issuer

Pool Characteristics

Portfolio as of: 30-06-2012

1. Key characteristics

Outstanding Principal Balance	7,857,624,686
Nb Loans	132,003
Nb Clients	69,620
Avg Loan Size	59,526
Avg Client Size	112,864
WA PD (%)	4.09%
WA LGD (%)	10.44%
WA Int Rate (%)	4.43%
WA Seasoning (Y)	3.83
WA Rem Maturity (Y)	8.01
WA WAL (Y)	4.34
Yearly Exp Loss (%) (WAPD*WALGD)	0.43%
Exp Loss (%) (WAPD*WALGD*AvgLife)	1.85%
WA Tot Collateral Ratio	214.55%

Esmee Master Issuer

Pool Characteristics

Portfolio as of: 30-06-2012

2. Business Unit

Business Unit	Outstanding Principal	%	No. of Loans	%
Retail Banking Belgium	5,585,856,283	71.09%	118,557	89.81%
CommercialBanking	1,875,392,530	23.87%	10,687	8.10%
Private Banking - Fortis	344,716,522	4.39%	2,701	2.05%
Investment Banking	33,505,708	0.43%	33	0.02%
Corporate & Public Banking	18,074,189	0.23%	23	0.02%
Energy,Commodities & Transp	79,454	0.00%	2	0.00%
Total	7,857,624,686	100.00%	132,003	100.00%

Esmee Master Issuer

Pool Characteristics

Portfolio as of: 30-06-2012

3. Products

Products	Outstanding Principal	%	No. of Loans	%
Investment Credit	6,274,419,157	79.85%	45,589	34.54%
Instalment Credit	1,438,316,748	18.30%	81,948	62.08%
Social & Fiscal Instalment	144,888,781	1.84%	4,466	3.38%
Total	7,857,624,686	100.00%	132,003	100.00%

Esmee Master Issuer

Pool Characteristics

Portfolio as of: 30-06-2012

4. Market Segment

Market Segment	Outstanding Principal	%	No. of Loans	%
Small Enterprise (IPS)	4,532,500,939	57.68%	79,643	60.33%
Medium-Sized Enterprise (MEC)	1,901,023,238	24.19%	10,761	8.15%
Professional (IPS)	976,297,850	12.42%	36,853	27.92%
Private Banking (PRB)	150,772,432	1.92%	176	0.13%
Small Enterprise Personal Banking (IPS)	116,644,017	1.48%	889	0.67%
Professional Personal Banking (IPS)	62,920,655	0.80%	1,582	1.20%
Corporate (MEC)	52,949,189	0.67%	58	0.04%
Individual Retail+ (IPS)	41,919,024	0.53%	1,295	0.98%
Individual Personal Banking (IPS)	11,482,852	0.15%	94	0.07%
Individual (IPS)	9,383,052	0.12%	614	0.47%
Unknown	988,757	0.01%	36	0.03%
Public Banking (MEC)	742,680	0.01%	2	0.00%
Total	7,857,624,686	100.00%	132,003	100.00%

Esmee Master Issuer

Pool Characteristics

Portfolio as of: 30-06-2012

5. Internal Rating

Internal Rating	Outstanding Principal	%	No. of Loans	%
Unknown	188,760,142	2.40%	3,695	2.80%
01.00	60,003,575	0.76%	219	0.17%
01.10	317,713	0.00%	1	0.00%
01.30	3,764,410	0.05%	1	0.00%
02.00	123,334,355	1.57%	2,852	2.16%
02.20	747,278	0.01%	4	0.00%
03.00	482,564,288	6.14%	9,742	7.38%
03.10	1,606,466	0.02%	4	0.00%
03.20	567,853	0.01%	1	0.00%
03.30	3,968,369	0.05%	4	0.00%
04.00	614,510,578	7.82%	13,226	10.02%
04.10	12,215,793	0.16%	13	0.01%
04.20	2,968,416	0.04%	1	0.00%
04.30	559,339	0.01%	4	0.00%
05.00	754,306,494	9.60%	14,595	11.06%
06.00	743,705,653	9.46%	13,136	9.95%
07.00	828,079,135	10.54%	11,626	8.81%
08.00	752,427,009	9.58%	10,726	8.13%
09.00	665,835,580	8.47%	9,764	7.40%
10.00	638,764,192	8.13%	8,445	6.40%
11.00	467,049,345	5.94%	6,507	4.93%
12.00	334,378,636	4.26%	5,453	4.13%
13.00	268,893,085	3.42%	6,687	5.07%
14.00	283,432,770	3.61%	4,919	3.73%
15.00	157,279,220	2.00%	2,573	1.95%
16.00	106,892,512	1.36%	1,757	1.33%
17.00	224,433,020	2.86%	4,489	3.40%
18.00	13,402,014	0.17%	177	0.13%
19.00	119,871,046	1.53%	1,276	0.97%
20.00	2,986,401	0.04%	106	0.08%
Total	7,857,624,686	100.00%	132,003	100.00%

Esmee Master Issuer

Pool Characteristics

Portfolio as of: 30-06-2012

6. Top 20 Clients

Top 20 Clients	Outstanding Principal	%	Internal Rating
1	35,856,575	0.46%	07.00
2	20,207,866	0.26%	10.00
3	20,000,000	0.25%	08.00
4	18,325,883	0.23%	08.00
5	17,218,900	0.22%	11.00
6	15,879,098	0.20%	07.00
7	15,262,309	0.19%	09.00
8	14,267,932	0.18%	07.00
9	13,661,907	0.17%	09.00
10	12,500,000	0.16%	05.00
11	12,388,789	0.16%	10.00
12	12,155,525	0.15%	10.00
13	11,678,520	0.15%	08.00
14	11,623,000	0.15%	01.00
15	11,500,000	0.15%	Unknown
16	11,486,097	0.15%	08.00
17	11,192,870	0.14%	07.00
18	11,013,731	0.14%	19.00
19	10,826,681	0.14%	07.00
20	10,800,000	0.14%	01.00
Total	297,845,685	3.79%	

Esmee Master Issuer

Pool Characteristics

Portfolio as of: 30-06-2012

7. Client Province

Client Province	Outstanding Principal	%	No. of Loans	%
West-Vlaanderen	1,342,711,450	17.09%	20,656	15.65%
Antwerpen	1,311,187,548	16.69%	19,396	14.69%
Oost-Vlaanderen	1,156,838,088	14.72%	19,366	14.67%
Vlaams-Brabant	754,437,446	9.60%	12,404	9.40%
Brussels	669,930,133	8.53%	9,989	7.57%
Hainaut	666,473,374	8.48%	13,090	9.92%
Limburg	622,107,067	7.92%	10,323	7.82%
Liège	514,879,405	6.55%	10,894	8.25%
Brabant Wallon	306,075,660	3.90%	5,695	4.31%
Namur	296,844,563	3.78%	6,123	4.64%
Luxembourg	181,781,827	2.31%	3,986	3.02%
Unknown	34,358,125	0.44%	81	0.06%
Total	7,857,624,686	100.00%	132,003	100.00%

Esmee Master Issuer

Pool Characteristics

Portfolio as of: 30-06-2012

8. Interest Rate

Interest Rate	Outstanding Principal	%	No. of Loans	%
<=3%	565,748,884	7.20%	10,207	7.73%
>3% and <=4%	2,153,606,822.51	27.41%	43,361	32.85%
>4% and <=5%	3,026,155,379.51	38.51%	40,533	30.71%
>5% and <=6%	1,764,191,841.52	22.45%	27,421	20.77%
>6% and <=7%	319,272,112.97	4.06%	8,502	6.44%
>7% and <=8%	22,375,422.06	0.28%	1,332	1.01%
>8% and <=9%	3,784,250.96	0.05%	386	0.29%
>9% and <=10%	1,318,430.94	0.02%	121	0.09%
>10%	1,171,541.72	0.01%	140	0.11%
Total	7,857,624,686	100.00%	132,003	100.00%

Esmee Master Issuer

Pool Characteristics

Portfolio as of: 30-06-2012

9. Interest Rate Type

Ranges (in year)	Outstanding Principal	%	No. of Loans	%
Fixed	6,697,965,713	85.24%	124,128	94.03%
Resetable	1,159,658,973	14.76%	7,875	5.97%
Total	7,857,624,686	100.00%	132,003	100.00%

Esmee Master Issuer

Pool Characteristics

Portfolio as of: 30-06-2012

10. Next Reset Date

Next Reset Date	Outstanding Principal	%	No. of Loans	%
2012	156,025,325	1.99%	1,169	0.89%
2013	239,416,718	3.05%	1,684	1.28%
2014	213,256,332	2.71%	1,206	0.91%
2015	168,605,910	2.15%	963	0.73%
2016	141,913,665	1.81%	601	0.46%
2017	72,157,785	0.92%	257	0.19%
2018	19,870,863	0.25%	82	0.06%
2019	18,911,909	0.24%	70	0.05%
2020	22,842,731	0.29%	81	0.06%
2021	19,282,240	0.25%	59	0.04%
2022	2,932,401	0.04%	16	0.01%
2023	1,191,525	0.02%	6	0.00%
2024	427,847	0.01%	3	0.00%
2025	3,000,735	0.04%	5	0.00%
2026	1,586,629	0.02%	3	0.00%
2027	2,621,929	0.03%	11	0.01%
2028	3,562,067	0.05%	12	0.01%
2029	1,951,785	0.02%	8	0.01%
2030	585,876	0.01%	2	0.00%
2031	495,342	0.01%	1	0.00%
Fixed To Maturity	6,766,985,071	86.12%	125,764	95.27%
Total	7,857,624,686	100.00%	132,003	100.00%

Esmee Master Issuer

Pool Characteristics

Portfolio as of: 30-06-2012

11. Int. Payment Frequency

Int. Payment Freq.	Outstanding Principal	%	No. of Loans	%
Monthly	6,357,430,061	80.91%	121,258	91.86%
Quarterly	751,261,546	9.56%	2,565	1.94%
Yearly	656,026,544	8.35%	7,389	5.60%
Twice A Year	92,906,536	1.18%	791	0.60%
Total	7,857,624,686	100.00%	132,003	100.00%

Esmee Master Issuer

Pool Characteristics

Portfolio as of: 30-06-2012

12. Sectors (Nace rev.2)

Sectors (Nave rev.2)	Outstanding Principal	%	No. of Loans	%
Wholesale And Retail Trade	1,638,253,802	20.85%	29,439	22.30%
Real Estate Activities	954,322,495	12.15%	6,268	4.75%
Construction	809,667,981	10.30%	20,648	15.64%
Professional, Scientific And Technical Activities	781,876,286	9.95%	12,618	9.56%
Manufacturing	764,841,207	9.73%	10,631	8.05%
Agriculture, Forestry And Fishing	484,013,852	6.16%	10,195	7.72%
Human Health And Social Work Activities	457,679,605	5.82%	9,167	6.94%
Financial And Insurance Activities	448,971,466	5.71%	3,100	2.35%
Accommodation And Food Service Activities	353,956,924	4.50%	7,499	5.68%
Transportation And Storage	324,328,730	4.13%	5,016	3.80%
Administrative And Support Service Activities	248,874,503	3.17%	5,725	4.34%
Private Individuals/Unknow	151,054,765	1.92%	2,116	1.60%
Information And Communication	128,875,441	1.64%	2,524	1.91%
Other Service Activities	127,305,279	1.62%	3,485	2.64%
Arts, Entertainment And Recreation	90,235,594	1.15%	1,868	1.42%
Unknown	31,644,904	0.40%	966	0.73%
Water Supply; Sewerage And Waste Management	28,283,277	0.36%	330	0.25%
Mining And Quarrying	14,605,309	0.19%	77	0.06%
Education	9,910,142	0.13%	294	0.22%
Electricity, Gas, Steam And Air Conditioning Supply	8,741,251	0.11%	22	0.02%
Activities Of Households As Employers	153,040	0.00%	11	0.01%
Public Administration And Defence; Compulsory Social Security	28,834	0.00%	4	0.00%
Total	7,857,624,686	100.00%	132,003	100.00%

Esmee Master Issuer

Pool Characteristics

Portfolio as of: 30-06-2012

13. Sectors (Nace rev.2-2 Digits)

Sector name	Outstanding Principal	%	No. of Loans	%
Real estate activities	954,322,495	12.15%	6,268	4.75%
Retail trade, except of motor vehicles and motorcycles	729,776,261	9.29%	14,941	11.32%
Wholesale trade, except of motor vehicles and motorcycles	647,321,624	8.24%	9,840	7.45%
Specialised construction activities	481,201,160	6.12%	15,489	11.73%
Crop and animal production, hunting and related service activities	470,042,732	5.98%	9,806	7.43%
Activities of head offices; management consultancy activities	374,050,364	4.76%	3,715	2.81%
Financial service activities, except insurance and pension funding	372,339,457	4.74%	1,777	1.35%
Human health activities	353,505,117	4.50%	8,502	6.44%
Construction of buildings	281,260,458	3.58%	4,067	3.08%
Wholesale and retail trade and repair of motor vehicles	261,155,917	3.32%	4,658	3.53%
Food and beverage service activities	229,452,228	2.92%	6,620	5.02%
Land transport and transport via pipelines	212,390,359	2.70%	3,938	2.98%
Manufacture of food products	200,491,117	2.55%	2,504	1.90%
Legal and accounting activities	191,430,539	2.44%	3,622	2.74%
Activities of extraterritorial organisations and bodies/Unknown	151,054,765	1.92%	2,116	1.60%
Manufacture of fabricated metal products, except machinery	131,894,250	1.68%	2,389	1.81%
Accommodation	124,504,695	1.58%	879	0.67%
Architectural and engineering activities; technical testing	116,183,748	1.48%	2,775	2.10%
Other personal service activities	98,695,312	1.26%	3,029	2.29%
Services to buildings and landscape activities	90,799,320	1.16%	2,758	2.09%
Computer programming, consultancy and related activities	83,873,254	1.07%	1,742	1.32%
Warehousing and support activities for transportation	82,997,863	1.06%	488	0.37%
Activities auxiliary to financial services and insurance activities	76,486,397	0.97%	1,308	0.99%
Residential care activities	68,469,665	0.87%	424	0.32%
Office administrative, office support and other business support	67,355,263	0.86%	1,069	0.81%
Sports activities and amusement and recreation activities	64,047,097	0.82%	1,289	0.98%
Manufacture of other non-metallic mineral products	62,321,408	0.79%	554	0.42%
Advertising and market research	61,997,478	0.79%	1,239	0.94%
Rental and leasing activities	61,352,088	0.78%	1,319	1.00%
Manufacture of furniture	47,904,110	0.61%	643	0.49%
Civil engineering	47,206,363	0.60%	1,092	0.83%
Manufacture of machinery and equipment n.e.c.	42,890,042	0.55%	582	0.44%
Printing and reproduction of recorded media	41,974,940	0.53%	888	0.67%
Manufacture of wood and of products of wood and cork	38,300,589	0.49%	589	0.45%
Social work activities without accommodation	35,704,824	0.45%	241	0.18%
Manufacture of rubber and plastic products	34,990,308	0.45%	346	0.26%
Manufacture of chemicals and chemical products	34,199,221	0.44%	236	0.18%
Unknown	31,644,904	0.40%	966	0.73%

Esmee Master Issuer

Pool Characteristics

Portfolio as of: 30-06-2012

13. Sectors (Nace rev.2-2 Digits)

Sector name	Outstanding Principal	%	No. of Loans	%
Waste collection, treatment and disposal activities	23,903,338	0.30%	228	0.17%
Activities of membership organisations	21,104,867	0.27%	175	0.13%
Other professional, scientific and technical activities	20,010,508	0.25%	676	0.51%
Motion picture, video and television programme production	19,516,710	0.25%	367	0.28%
Water transport	19,502,120	0.25%	213	0.16%
Creative, arts and entertainment activities	19,136,464	0.24%	506	0.38%
Publishing activities	18,437,422	0.23%	154	0.12%
Manufacture of paper and paper products	18,253,613	0.23%	109	0.08%
Travel agency, tour operator and other reservation service	15,846,857	0.20%	321	0.24%
Veterinary activities	15,150,250	0.19%	530	0.40%
Repair and installation of machinery and equipment	14,938,659	0.19%	296	0.22%
Other manufacturing	14,730,808	0.19%	398	0.30%
Manufacture of textiles	13,827,495	0.18%	273	0.21%
Other mining and quarrying	13,718,595	0.17%	68	0.05%
Manufacture of basic pharmaceutical products	13,507,807	0.17%	78	0.06%
Manufacture of electrical equipment	12,526,168	0.16%	179	0.14%
Manufacture of wearing apparel	11,152,979	0.14%	177	0.13%
Employment activities	10,859,647	0.14%	181	0.14%
Manufacture of beverages	10,227,824	0.13%	91	0.07%
Education	9,910,142	0.13%	294	0.22%
Forestry and logging	9,494,823	0.12%	336	0.25%
Electricity, gas, steam and air conditioning supply	8,741,251	0.11%	22	0.02%
Postal and courier activities	7,713,586	0.10%	356	0.27%
Repair of computers and personal and household goods	7,505,100	0.10%	281	0.21%
Manufacture of computer, electronic and optical products	6,777,022	0.09%	115	0.09%
Manufacture of motor vehicles, trailers and semi-trailers	5,284,172	0.07%	68	0.05%
Fishing and aquaculture	4,476,297	0.06%	53	0.04%
Libraries, archives, museums and other cultural activities	4,314,480	0.05%	29	0.02%
Manufacture of basic metals	4,299,651	0.05%	43	0.03%
Information service activities	4,113,807	0.05%	159	0.12%
Sewerage	3,314,150	0.04%	72	0.05%
Scientific research and development	3,053,400	0.04%	61	0.05%
Gambling and betting activities	2,737,554	0.03%	44	0.03%
Security and investigation activities	2,661,327	0.03%	77	0.06%
Telecommunications	2,317,535	0.03%	78	0.06%
Air transport	1,724,802	0.02%	21	0.02%
Manufacture of leather and related products	1,515,486	0.02%	35	0.03%
Manufacture of tobacco products	1,507,036	0.02%	5	0.00%

Esmee Master Issuer

Pool Characteristics

Portfolio as of: 30-06-2012

13. Sectors (Nace rev.2-2 Digits)

Sector name	Outstanding Principal	%	No. of Loans	%
Manufacture of other transport equipment	1,311,107	0.02%	32	0.02%
Mining support service activities	747,797	0.01%	3	0.00%
Remediation activities and other waste management services	698,334	0.01%	24	0.02%
Programming and broadcasting activities	616,713	0.01%	24	0.02%
Water collection, treatment and supply	367,455	0.00%	6	0.00%
Activities of households as employers of domestic personnel	153,040	0.00%	11	0.01%
Insurance, reinsurance and pension funding	145,612	0.00%	15	0.01%
Mining of coal and lignite	89,250	0.00%	3	0.00%
Extraction of crude petroleum and natural gas	49,667	0.00%	3	0.00%
Public administration and defence; compulsory social security	28,834	0.00%	4	0.00%
Manufacture of coke and refined petroleum products	15,393	0.00%	1	0.00%
Total	7,857,624,686	100.00%	132,003	100.00%

Esmee Master Issuer

Pool Characteristics

Portfolio as of: 30-06-2012

14. Arrears

Arrears	Outstanding Principal	%	No. of Loans	%
Current	7,668,465,662	97.59%	128,091	97.04%
02 > 0 and <= 30	101,353,496	1.29%	2,115	1.60%
03 > 30 and <= 60	20,745,999	0.26%	333	0.25%
04 > 60 and <= 90	16,113,912	0.21%	246	0.19%
05 > 90 and <= 120	5,839,578	0.07%	106	0.08%
06 > 120 and <= 150	5,080,764	0.06%	127	0.10%
07 > 150 and <= 180	9,788,173	0.12%	127	0.10%
08 > 180	30,237,102	0.38%	858	0.65%
Total	7,857,624,686	100.00%	132,003	100.00%

Esmee Master Issuer

Pool Characteristics

Portfolio as of: 30-06-2012

15. Redemption Type

Redemption Type	Outstanding Principal	%	No. of Loans	%
Annuity	5,503,914,822	70.05%	110,831	83.96%
Linear	2,173,556,838	27.66%	20,927	15.85%
Bullet	180,153,026	2.29%	245	0.19%
Total	7,857,624,686	100.00%	132,003	100.00%

Esmee Master Issuer

Pool Characteristics

Portfolio as of: 30-06-2012

16. Origination Year

Origination Year	Outstanding Principal	%	No. of Loans	%
2000	116,788,180	1.49%	1,787	1.35%
2001	107,819,925	1.37%	1,431	1.08%
2002	130,374,601	1.66%	2,034	1.54%
2003	254,778,740	3.24%	2,975	2.25%
2004	258,408,902	3.29%	3,052	2.31%
2005	448,253,057	5.70%	4,448	3.37%
2006	682,900,173	8.69%	5,834	4.42%
2007	871,252,583	11.09%	10,279	7.79%
2008	944,665,820	12.02%	17,823	13.50%
2009	907,503,603	11.55%	21,290	16.13%
2010	1,178,752,491	15.00%	24,980	18.92%
2011	1,440,111,148	18.33%	26,276	19.91%
2012	516,015,464	6.57%	9,794	7.42%
Total	7,857,624,686	100.00%	132,003	100.00%

Esmee Master Issuer

Pool Characteristics

Portfolio as of: 30-06-2012

17. Remaining Maturity (years)

Remaining Maturity (years)	Outstanding Principal	%	No. of Loans	%
<=1	369,154,184	4.70%	32,018	24.26%
>1 and <=2	482,128,197	6.14%	24,093	18.25%
>2 and <=3	638,398,188	8.12%	21,729	16.46%
>3 and <=4	758,592,994	9.65%	16,854	12.77%
>4 and <=5	659,330,463	8.39%	10,005	7.58%
>5 and <=6	459,025,648	5.84%	4,352	3.30%
>6 and <=7	456,911,036	5.81%	3,810	2.89%
>7 and <=8	392,775,006	5.00%	2,983	2.26%
>8 and <=9	532,790,680	6.78%	3,342	2.53%
>9 and <=10	487,737,100	6.21%	2,695	2.04%
>10 and <=11	357,318,819	4.55%	1,678	1.27%
>11 and <=12	361,773,926	4.60%	1,599	1.21%
>12 and <=13	277,708,199	3.53%	1,317	1.00%
>13 and <=14	397,288,302	5.06%	1,447	1.10%
>14 and <=15	392,472,653	4.99%	1,302	0.99%
>15 and <=16	212,363,722	2.70%	703	0.53%
>16 and <=17	177,558,880	2.26%	635	0.48%
>17 and <=18	161,415,207	2.05%	516	0.39%
>18 and <=19	150,175,008	1.91%	522	0.40%
>19 and <=20	101,465,932	1.29%	315	0.24%
>20 and <=21	13,449,484	0.17%	33	0.02%
>21 and <=22	3,205,674	0.04%	17	0.01%
>22 and <=23	3,139,223	0.04%	13	0.01%
>23 and <=24	2,759,422	0.04%	10	0.01%
>24 and <=25	1,516,263	0.02%	6	0.00%
>25 and <=26	2,695,446	0.03%	4	0.00%
>26 and <=27	4,475,028	0.06%	5	0.00%
Total	7,857,624,686	100.00%	132,003	100.00%

Esmee Master Issuer

Pool Characteristics

Portfolio as of: 30-06-2012

18. Original Maturity (years)

Original Maturity (years)	Outstanding Principal	%	No. of Loans	%
<=1	169,450,329	2.16%	5,930	4.49%
>1 and <=2	56,867,803	0.72%	4,221	3.20%
>2 and <=3	391,493,038	4.98%	29,372	22.25%
>3 and <=4	499,424,077	6.36%	23,993	18.18%
>4 and <=5	734,053,674	9.34%	21,649	16.40%
>5 and <=6	134,303,976	1.71%	2,423	1.84%
>6 and <=7	437,886,014	5.57%	7,011	5.31%
>7 and <=8	108,599,873	1.38%	1,126	0.85%
>8 and <=9	419,200,605	5.33%	5,042	3.82%
>9 and <=10	1,003,085,675	12.77%	10,963	8.31%
>10 and <=11	136,966,742	1.74%	750	0.57%
>11 and <=12	117,175,994	1.49%	730	0.55%
>12 and <=13	41,733,711	0.53%	289	0.22%
>13 and <=14	579,036,112	7.37%	3,335	2.53%
>14 and <=15	1,418,830,963	18.06%	8,555	6.48%
>15 and <=16	159,949,884	2.04%	611	0.46%
>16 and <=17	69,198,647	0.88%	197	0.15%
>17 and <=18	48,487,589	0.62%	175	0.13%
>18 and <=19	427,976,858	5.45%	1,687	1.28%
>19 and <=20	758,073,699	9.65%	3,522	2.67%
>20 and <=21	90,100,519	1.15%	263	0.20%
>21 and <=22	18,226,590	0.23%	46	0.03%
>22 and <=23	4,921,983	0.06%	9	0.01%
>23 and <=24	8,433,897	0.11%	26	0.02%
>24 and <=25	12,259,776	0.16%	62	0.05%
>25	11,886,657	0.15%	16	0.01%
Total	7,857,624,686	100.00%	132,003	100.00%

Esmee Master Issuer

Pool Characteristics

Portfolio as of: 30-06-2012

19. LGD

LGD Range (%)	Outstanding Principal	%	No. of Loans	%
>0 and <=10	5,158,714,363	65.65%	82,836	62.75%
>10 and <=20	1,185,948,998	15.09%	12,036	9.12%
>20 and <=30	593,806,079	7.56%	10,301	7.80%
>30 and <=40	424,983,862	5.41%	7,952	6.02%
>40 and <=50	252,685,451	3.22%	7,261	5.50%
>50 and <=60	156,208,494	1.99%	5,859	4.44%
>60 and <=70	45,271,601	0.58%	4,462	3.38%
>70 and <=80	356,727	0.00%	59	0.04%
>80	5,067,982	0.06%	2	0.00%
Unknown	34,581,131	0.44%	1,235	0.94%
Total	7,857,624,686	100.00%	132,003	100.00%

Esmee Master Issuer

Pool Characteristics

Portfolio as of: 30-06-2012

20. Size of Loans

Range (eur 1000)	Outstanding Principal	%	No. of Loans	%
<=100	2,431,222,583	30.94%	114,107	86.44%
>100 and <=200	1,367,574,260	17.40%	9,636	7.30%
>200 and <=300	902,645,774	11.49%	3,696	2.80%
>300 and <=400	595,114,567	7.57%	1,717	1.30%
>400 and <=500	401,445,801	5.11%	899	0.68%
>500 and <=600	266,787,791	3.40%	488	0.37%
>600 and <=700	217,441,293	2.77%	336	0.25%
>700 and <=800	179,231,443	2.28%	239	0.18%
>800 and <=900	133,854,287	1.70%	157	0.12%
>900 and <=1000	118,227,236	1.50%	124	0.09%
>1000 and <=1100	94,438,012	1.20%	90	0.07%
>1100 and <=1200	83,188,214	1.06%	72	0.05%
>1200 and <=1300	66,497,439	0.85%	53	0.04%
>1300 and <=1400	62,327,978	0.79%	46	0.03%
>1400 and <=1500	69,545,610	0.89%	48	0.04%
>1500 and <=1600	47,964,731	0.61%	31	0.02%
>1600 and <=1700	46,268,117	0.59%	28	0.02%
>1700 and <=1800	43,893,441	0.56%	25	0.02%
>1800 and <=1900	22,183,133	0.28%	12	0.01%
>1900 and <=2000	68,654,678	0.87%	35	0.03%
>2000 and <=2100	18,536,486	0.24%	9	0.01%
>2100 and <=2200	32,318,586	0.41%	15	0.01%
>2200 and <=2300	24,789,655	0.32%	11	0.01%
>2300 and <=2400	26,079,278	0.33%	11	0.01%
>2400 and <=2500	31,869,494	0.41%	13	0.01%
>2500 and <=2600	20,246,467	0.26%	8	0.01%
>2600 and <=2700	18,623,822	0.24%	7	0.01%
>2700 and <=2800	13,908,461	0.18%	5	0.00%
>2800 and <=2900	17,134,637	0.22%	6	0.00%
>2900 and <=3000	26,532,439	0.34%	9	0.01%
>3000	409,078,971	5.21%	70	0.05%
Total	7,857,624,686	100.00%	132,003	100.00%

Esmee Master Issuer

Pool Characteristics

Portfolio as of: 30-06-2012

21. Collateral Ratio

Range (%)	Outstanding Principal	%	No. of Loans	%
>0 and <=10	99,629,650	1.27%	770	0.58%
>10 and <=20	22,397,027	0.29%	375	0.28%
>20 and <=30	38,753,799	0.49%	701	0.53%
>30 and <=40	42,679,198	0.54%	807	0.61%
>40 and <=50	62,739,552	0.80%	876	0.66%
>50 and <=60	69,964,110	0.89%	1,138	0.86%
>60 and <=70	74,533,352	0.95%	1,277	0.97%
>70 and <=80	131,060,282	1.67%	1,453	1.10%
>80 and <=90	110,707,491	1.41%	1,631	1.24%
>90 and <=100	206,150,391	2.62%	2,507	1.90%
>100 and <=110	315,694,188	4.02%	3,991	3.02%
>110 and <=120	545,874,347	6.95%	4,761	3.61%
>120 and <=130	544,049,079	6.92%	4,751	3.60%
>130 and <=140	509,584,882	6.49%	4,590	3.48%
>140 and <=150	428,079,939	5.45%	4,202	3.18%
>150 and <=160	381,016,720	4.85%	3,845	2.91%
>160 and <=170	328,951,388	4.19%	3,601	2.73%
>170 and <=180	282,757,944	3.60%	3,358	2.54%
>180 and <=190	218,471,845	2.78%	2,937	2.22%
>190 and <=200	218,841,630	2.79%	2,867	2.17%
>200	2,678,863,243	34.09%	67,306	50.99%
NoCollateral	546,824,628	6.96%	14,259	10.80%
Total	7,857,624,686	100.00%	132,003	100.00%

Esmee Master Issuer

Pool Characteristics

Portfolio as of: 30-06-2012

22. Collaterals

Collateral Type	Amount	%
Mortgage Mandate	6,081,610,127	36.07%
Aval & Related Guarantee	2,658,514,732	15.77%
Mortgage	2,894,167,621	17.17%
Other Mandate	1,464,028,050	8.68%
Business Pledge	984,676,073	5.84%
Other Pledge	2,324,121,772	13.79%
Security Pledge	349,547,291	2.07%
Cash Pledge	101,727,231	0.60%
Total	16,858,392,897	100.00%

Esmee Master Issuer

Pool Characteristics

Portfolio as of: 30-06-2012

23. Yearly Expected Loss

Range (%)	Outstanding Principal	%	No. of Loans	%
>0 and <=2	3,808,584,083	48.47%	63,361	48.00%
>2 and <=4	567,290,269	7.22%	9,704	7.35%
>4 and <=6	462,205,300	5.88%	7,687	5.82%
>6 and <=8	334,032,570	4.25%	5,201	3.94%
>8 and <=10	318,974,668	4.06%	4,046	3.07%
>10 and <=12	206,207,281	2.62%	3,121	2.36%
>12 and <=14	154,559,870	1.97%	2,820	2.14%
>14 and <=16	186,655,598	2.38%	2,470	1.87%
>16 and <=18	125,473,046	1.60%	2,291	1.74%
>18 and <=20	162,625,410	2.07%	2,017	1.53%
>20 and <=22	76,492,223	0.97%	1,445	1.09%
>22 and <=24	83,253,404	1.06%	1,140	0.86%
>24 and <=26	67,644,632	0.86%	1,252	0.95%
>26 and <=28	75,102,776	0.96%	1,114	0.84%
>28 and <=30	53,674,708	0.68%	930	0.70%
>30 and <=32	40,528,776	0.52%	798	0.60%
>32 and <=34	36,628,465	0.47%	878	0.67%
>34 and <=36	37,944,903	0.48%	783	0.59%
>36 and <=38	23,504,172	0.30%	600	0.45%
>38 and <=40	55,756,406	0.71%	569	0.43%
>40 and <=42	40,058,680	0.51%	548	0.42%
>42 and <=44	30,453,434	0.39%	518	0.39%
>44 and <=46	31,396,667	0.40%	483	0.37%
>46 and <=48	19,529,924	0.25%	432	0.33%
>48 and <=50	17,950,850	0.23%	484	0.37%
>50 and <=52	14,577,906	0.19%	393	0.30%
>52 and <=54	17,512,437	0.22%	331	0.25%
>54 and <=56	617,213,823	7.85%	12,877	9.76%
>56	191,792,404	2.44%	3,710	2.81%
Total	7,857,624,686	100.00%	132,003	100.00%