

Esmee Master Issuer

Report date: 31 December 2017

PORTFOLIO REPORT

Portfolio Report:

Reporting month as of ultimo:

Esmee Master Issuer

December 2017

Key Characteristics

Oustanding Principal Balance (EUR)	9,730,311,668
Average Loan Size (EUR)	76,222
Average Client Size (EUR)	157,808
Number of Loans	127,658
Number of Clients	61,659
Weighted Average PD (%)	382.13%
Weighted Average LGD (%)	1134.43%
Weighted Average Interest Rate (%)	278.98%
Weighted Average Seasoning (years)	4.27
Weighted Average Remaining Maturity (years)	7.68
Weighted Average WAL (years)	4.14
Yearly Expected Loss (%) (WAPD*WALGD)	0.43%
Expected Loss (%) (WAPD*WALGD*AvgLife)	1.79%
WA Tot Collateral Ratio	172.59%

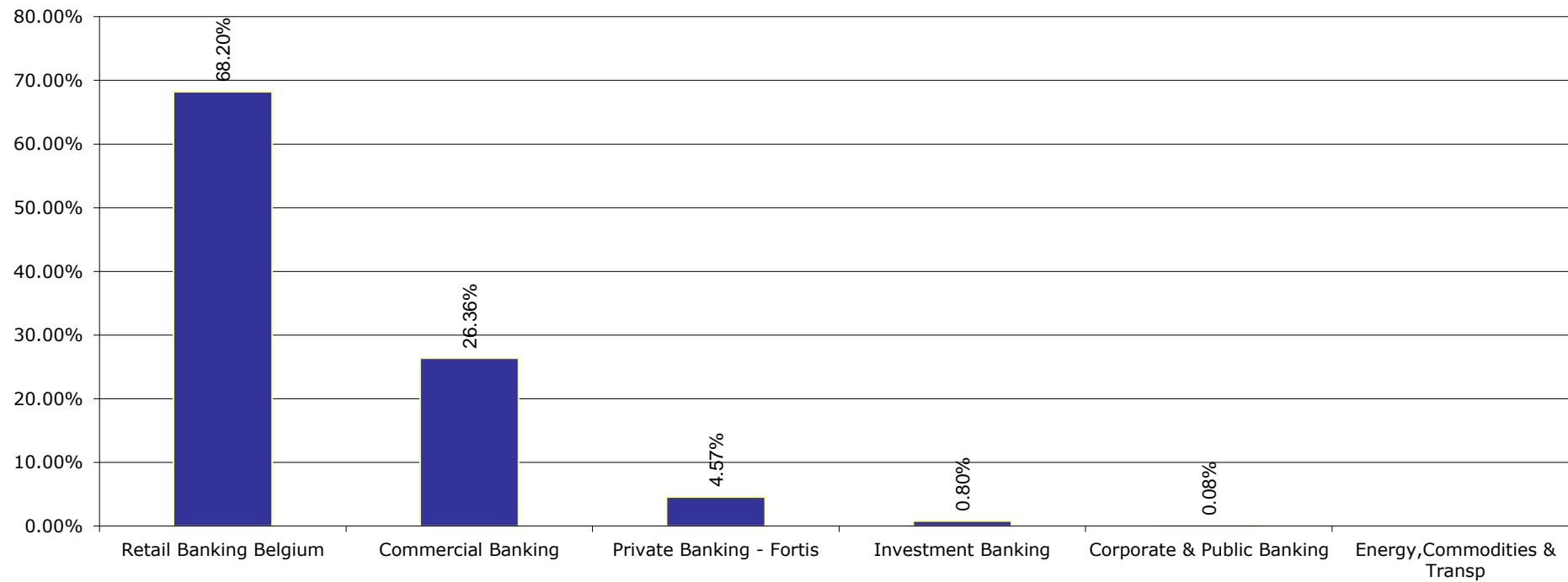
Portfolio Report:

Reporting month as of ultimo:

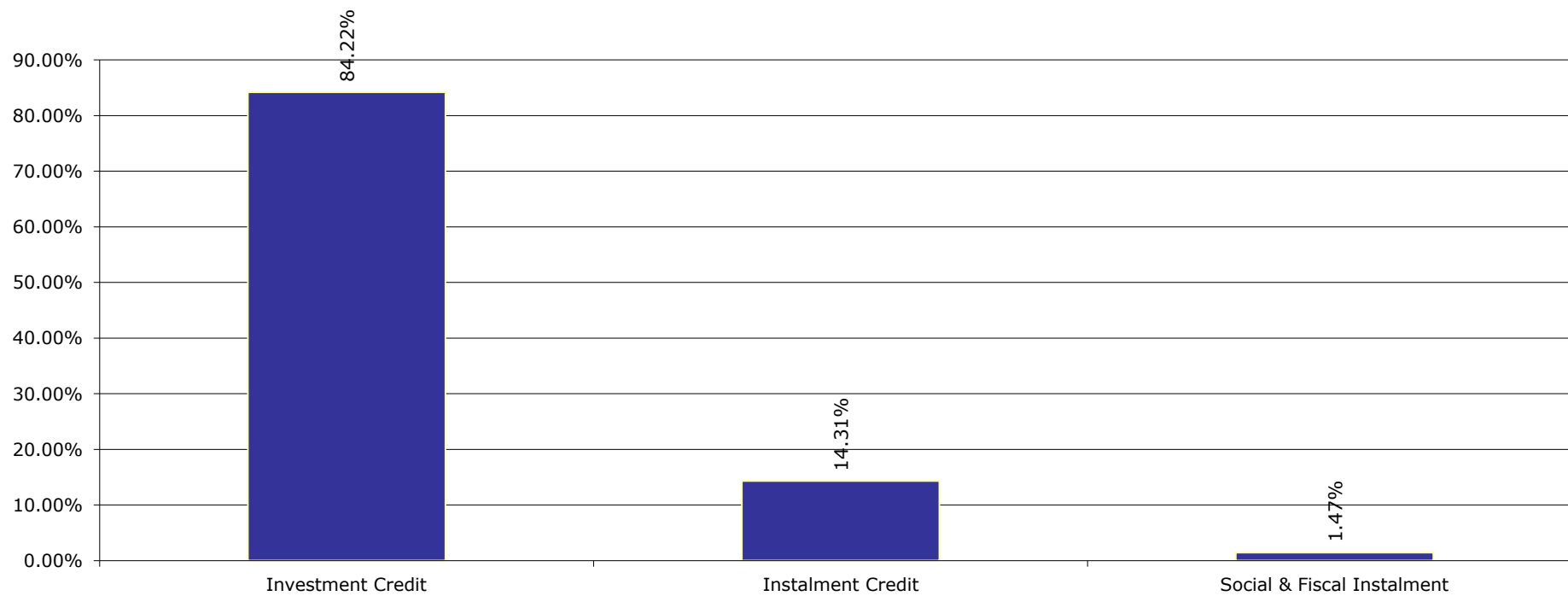
Esmee Master Issuer

December 2017

Business Unit



Products



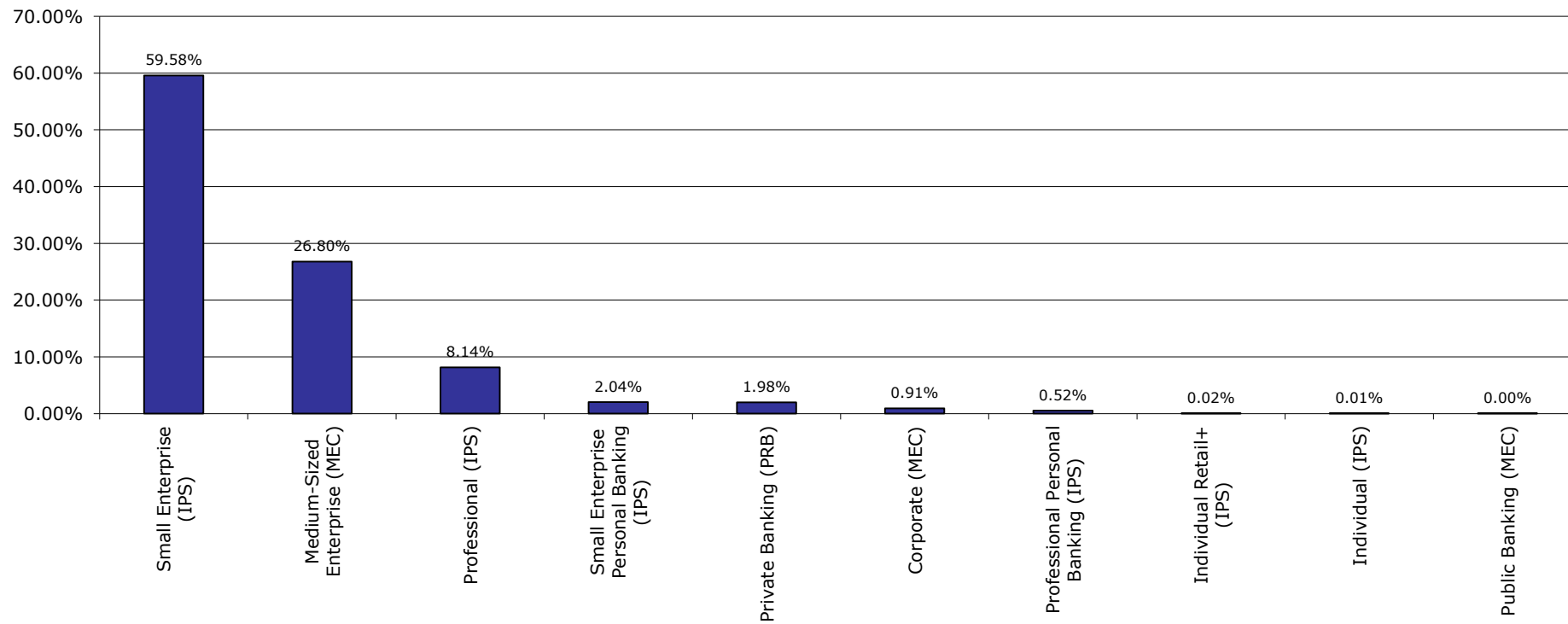
Portfolio Report:

Reporting month as of ultimo:

Esmee Master Issuer

December 2017

Market Segment



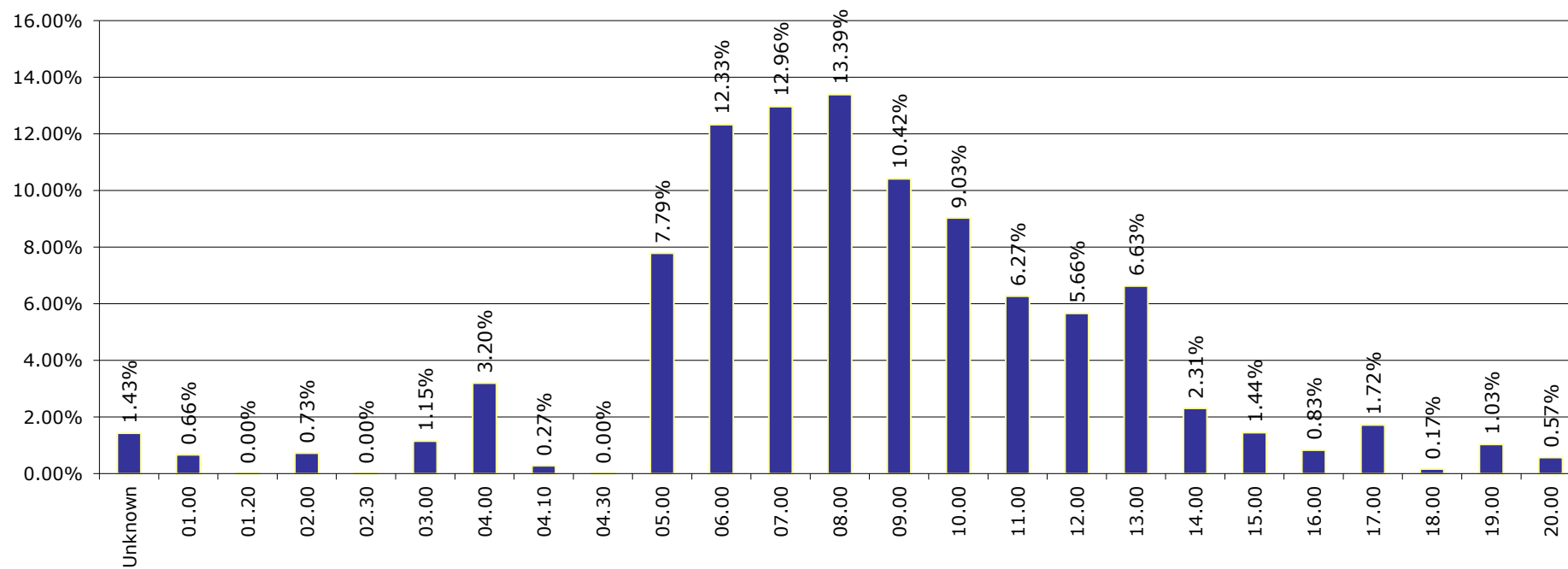
Portfolio Report:

Reporting month as of ultimo:

Esmee Master Issuer

December 2017

Internal Rating



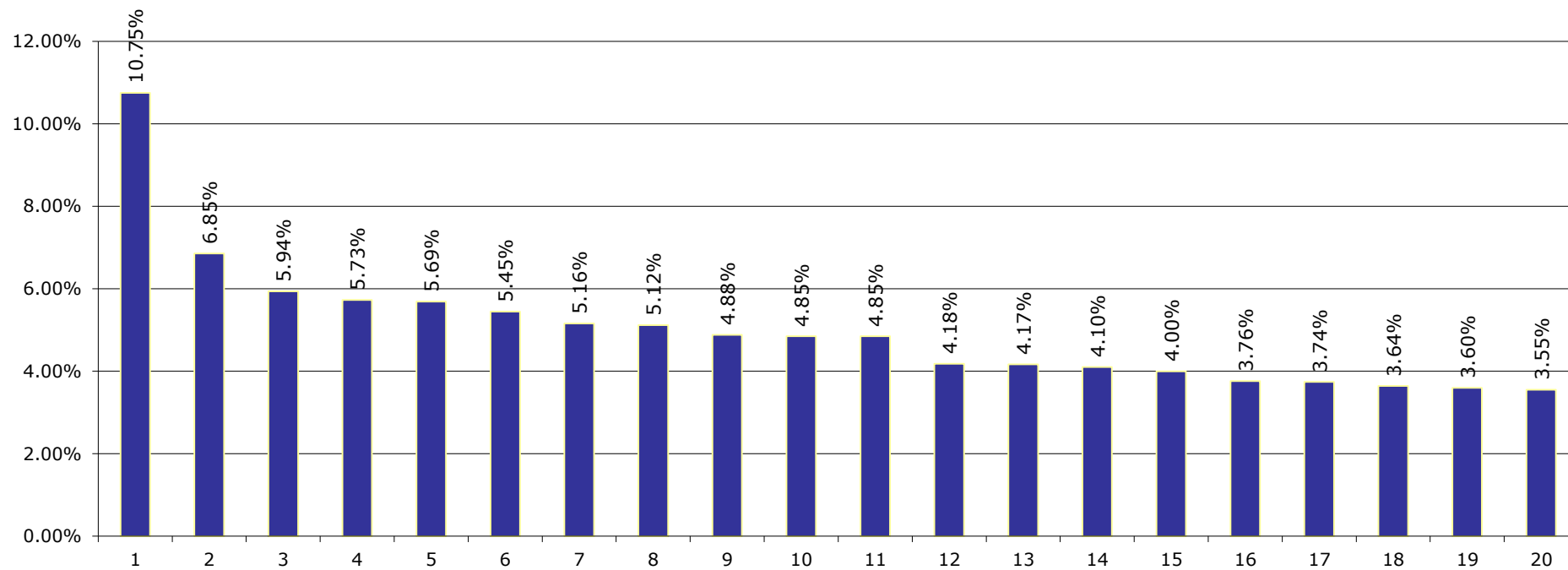
Portfolio Report:

Reporting month as of ultimo:

Esmee Master Issuer

December 2017

Top 20 Clients



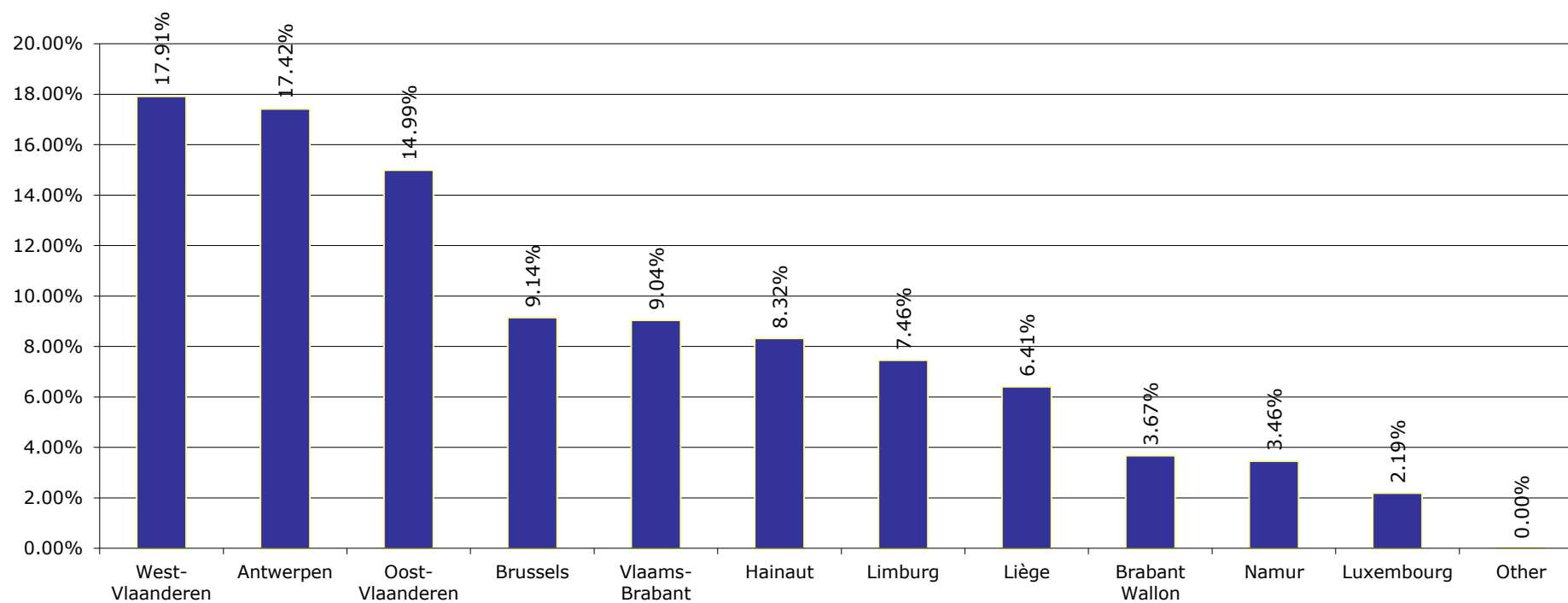
Portfolio Report:

Reporting month as of ultimo:

Esmee Master Issuer

December 2017

Client Province



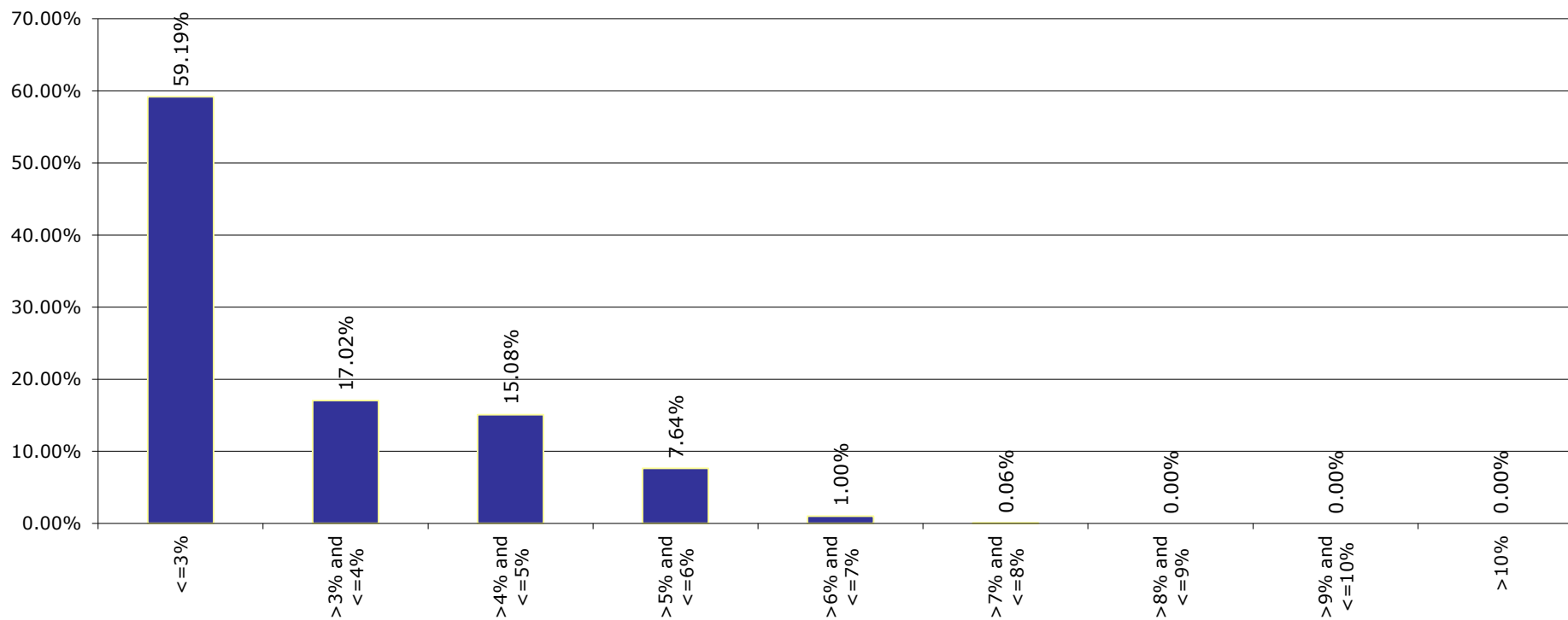
Portfolio Report:

Reporting month as of ultimo:

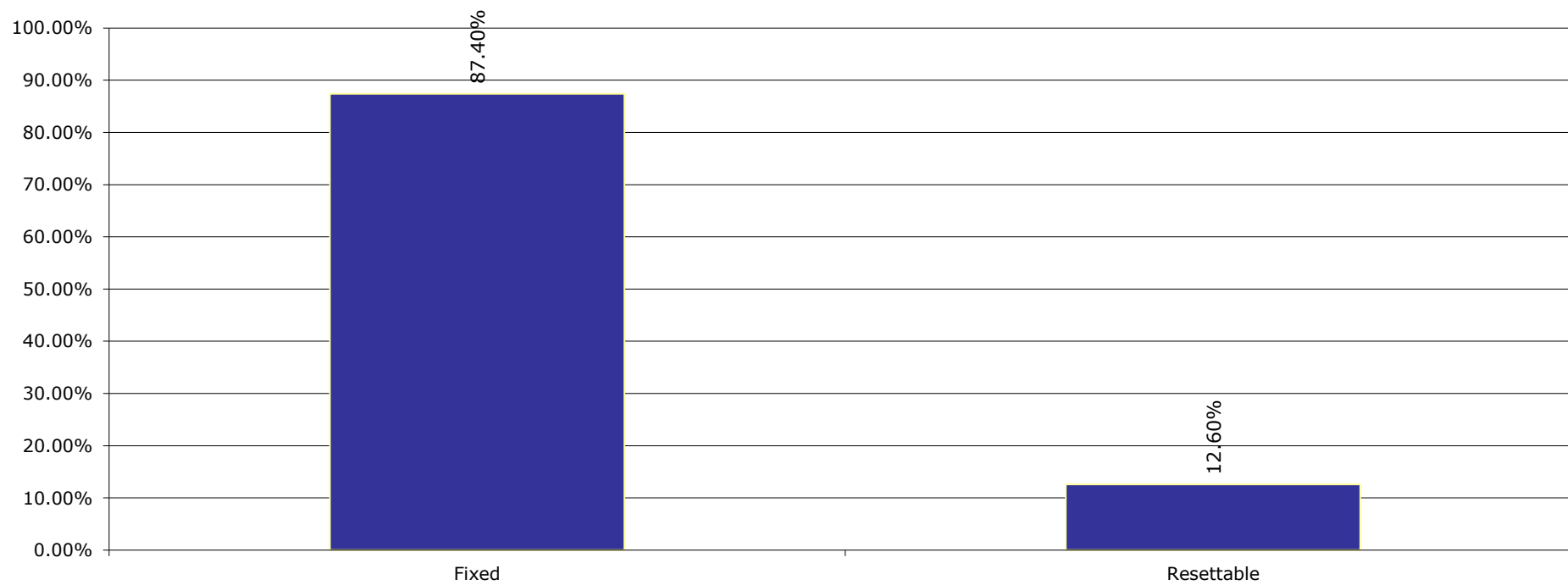
Esmee Master Issuer

December 2017

Interest Rate



Interest Rate Type



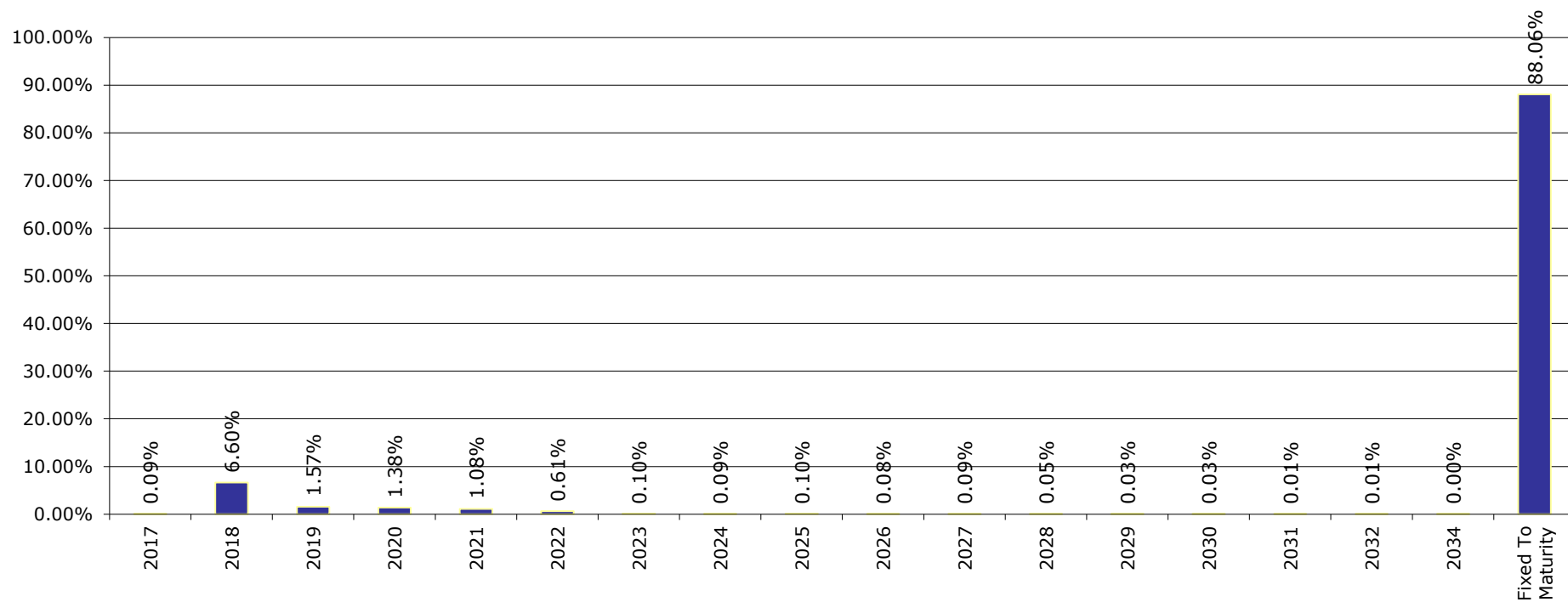
Portfolio Report:

Reporting month as of ultimo:

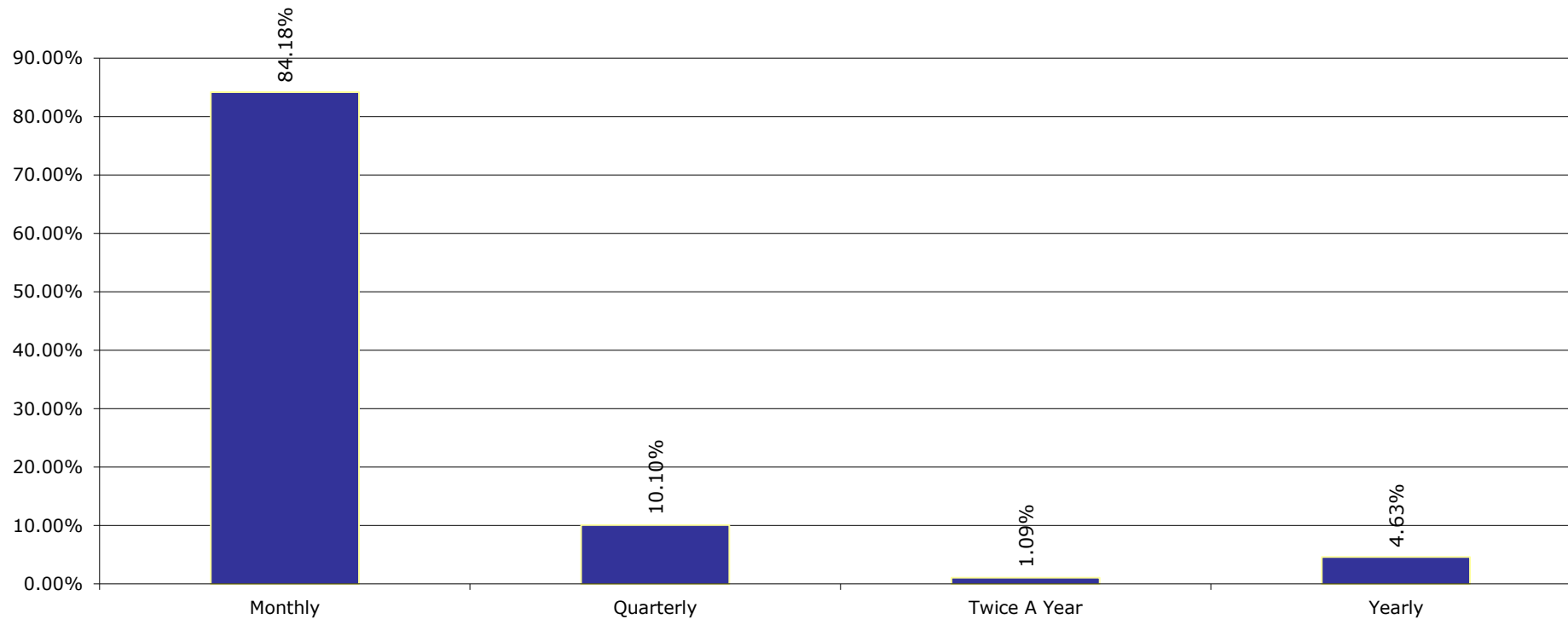
Esmee Master Issuer

December 2017

Next Reset Date



Int. Payment Frequency



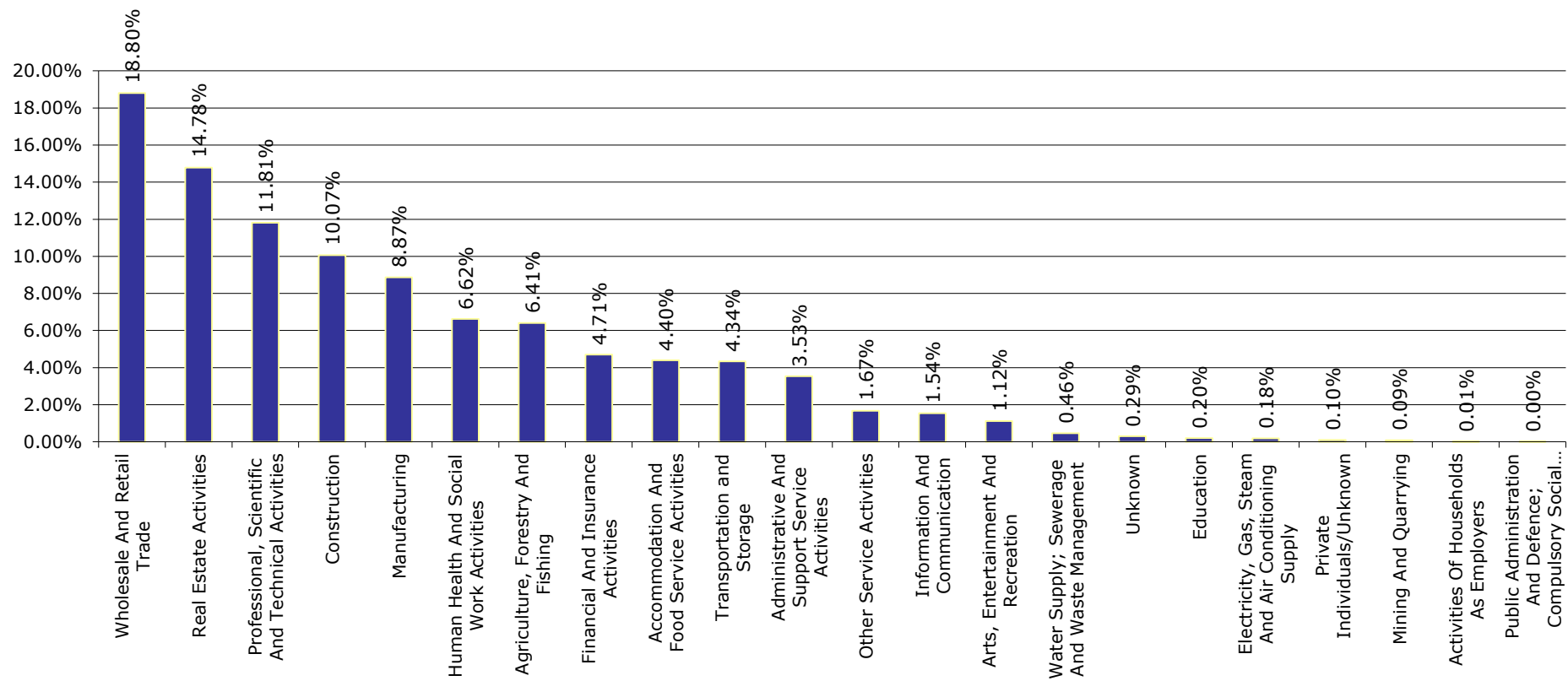
Portfolio Report:

Reporting month as of ultimo:

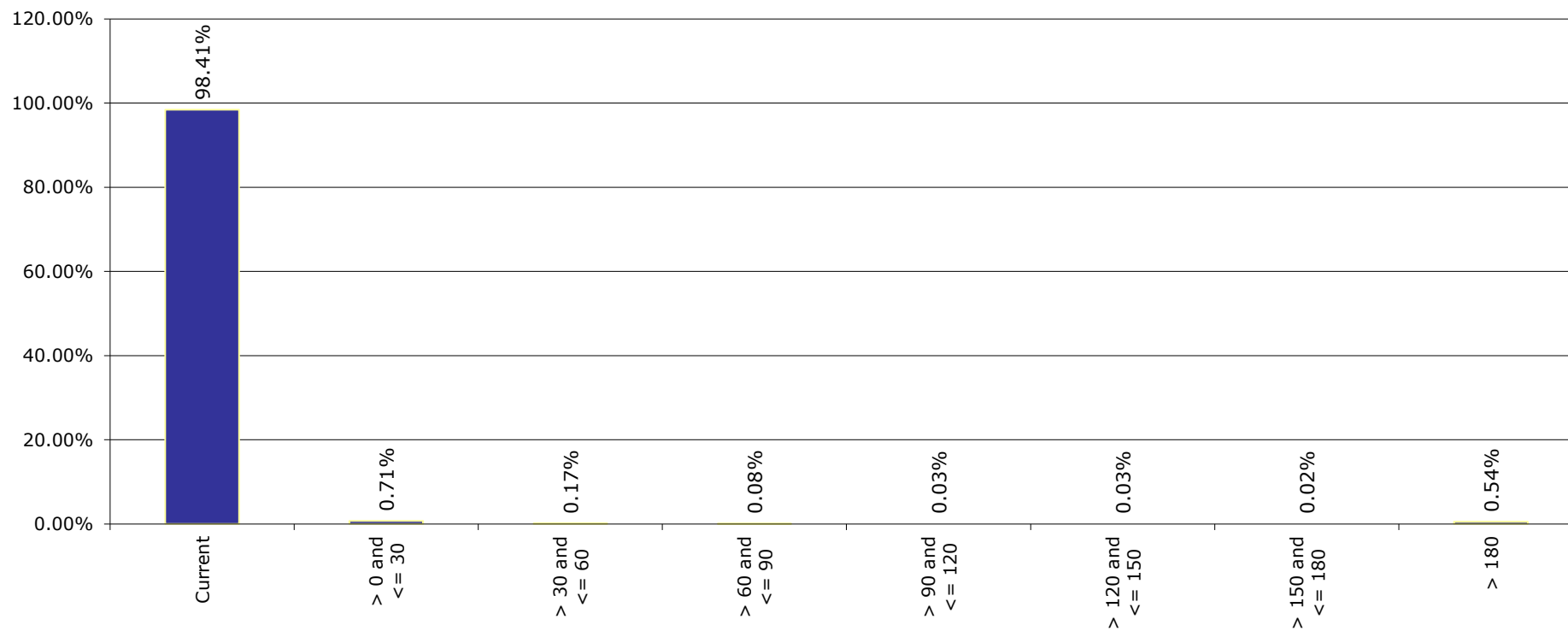
Esmee Master Issuer

December 2017

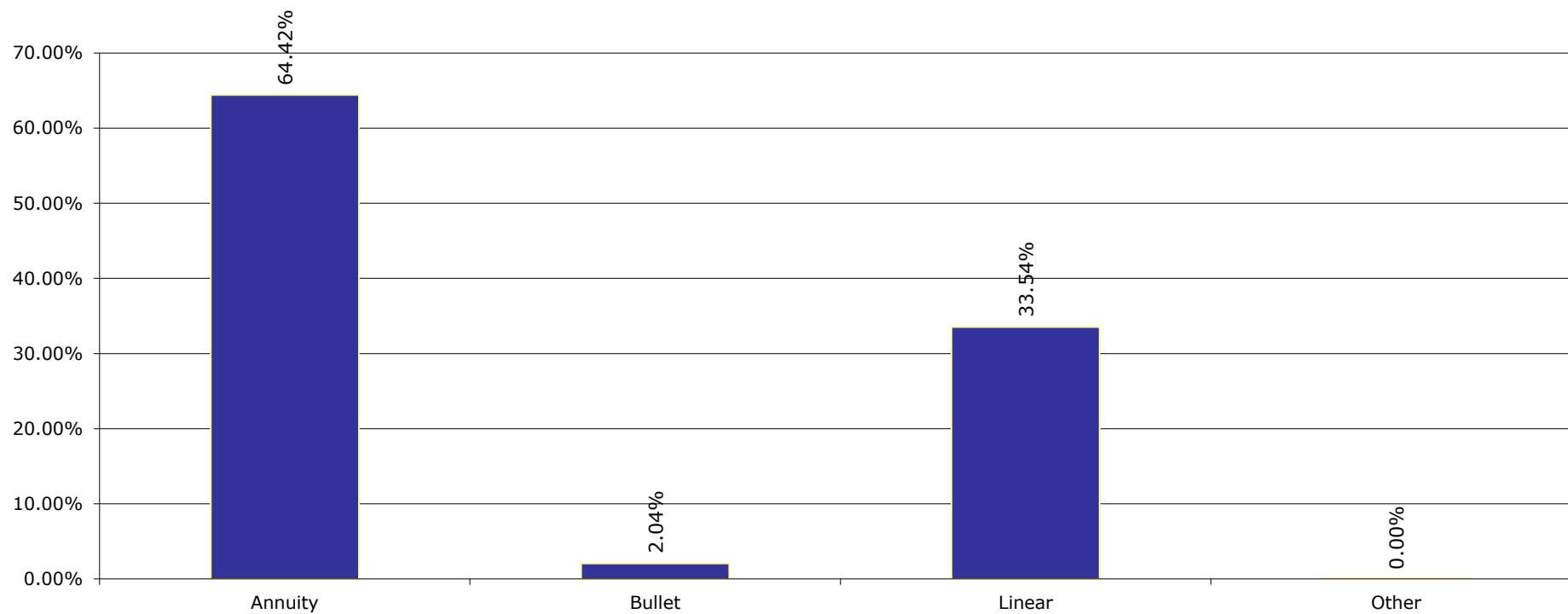
Sectors (Nace rev.2)



Arrears



Redemption Type



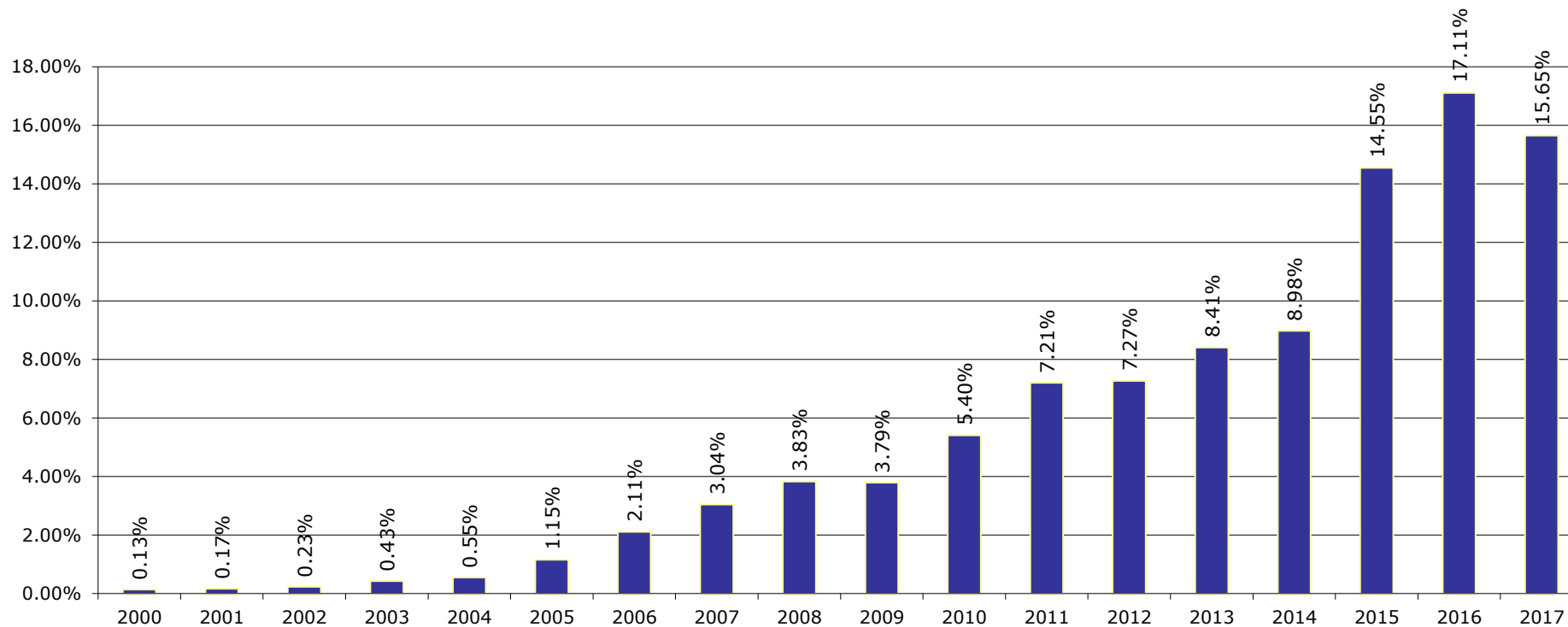
Portfolio Report:

Reporting month as of ultimo:

Esmee Master Issuer

December 2017

Origination Year



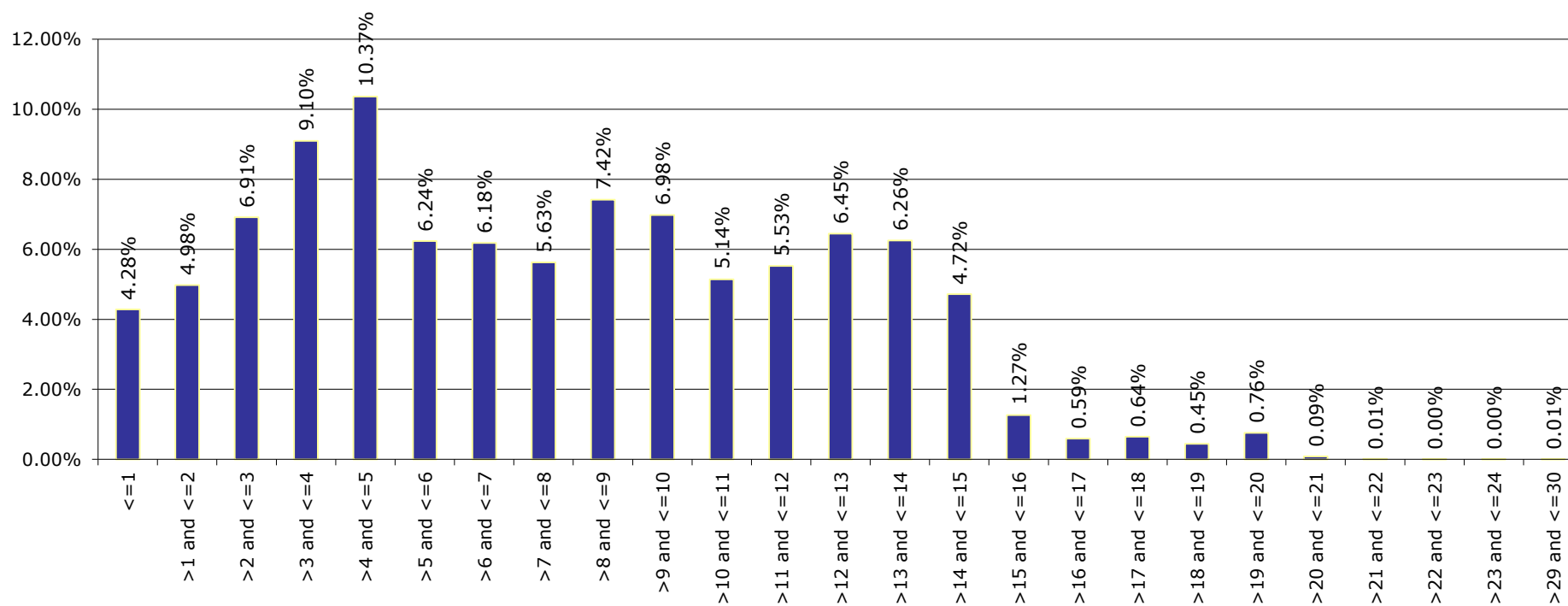
Portfolio Report:

Reporting month as of ultimo:

Esmee Master Issuer

December 2017

Remaining Maturity



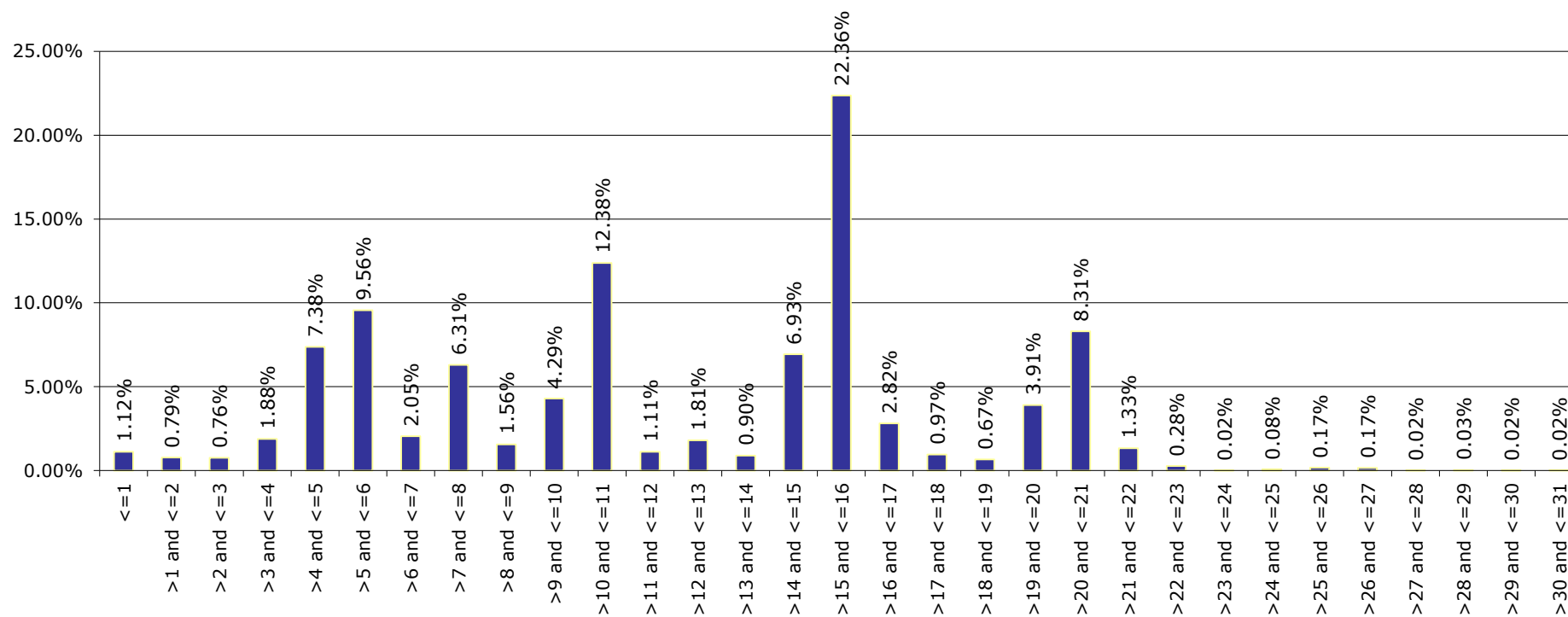
Portfolio Report:

Reporting month as of ultimo:

Esmee Master Issuer

December 2017

Original Maturity



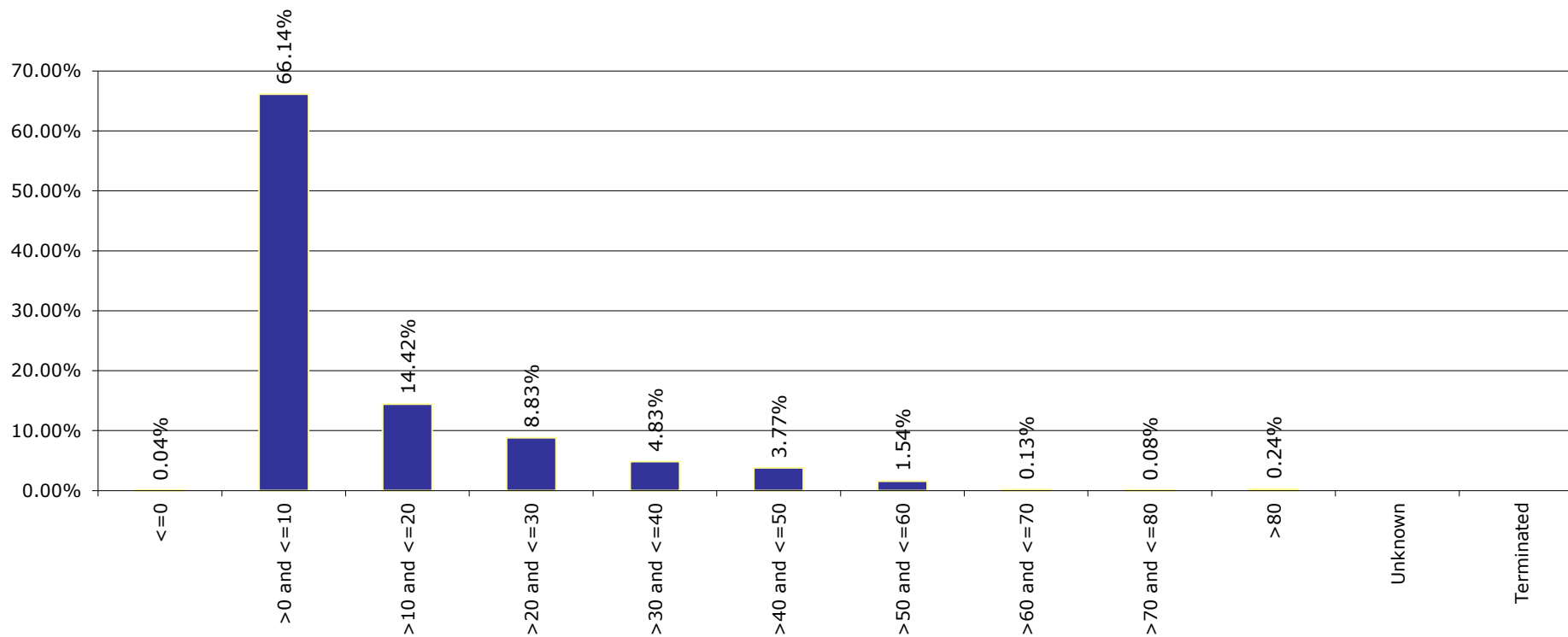
Portfolio Report:

Reporting month as of ultimo:

Esmee Master Issuer

December 2017

LGD



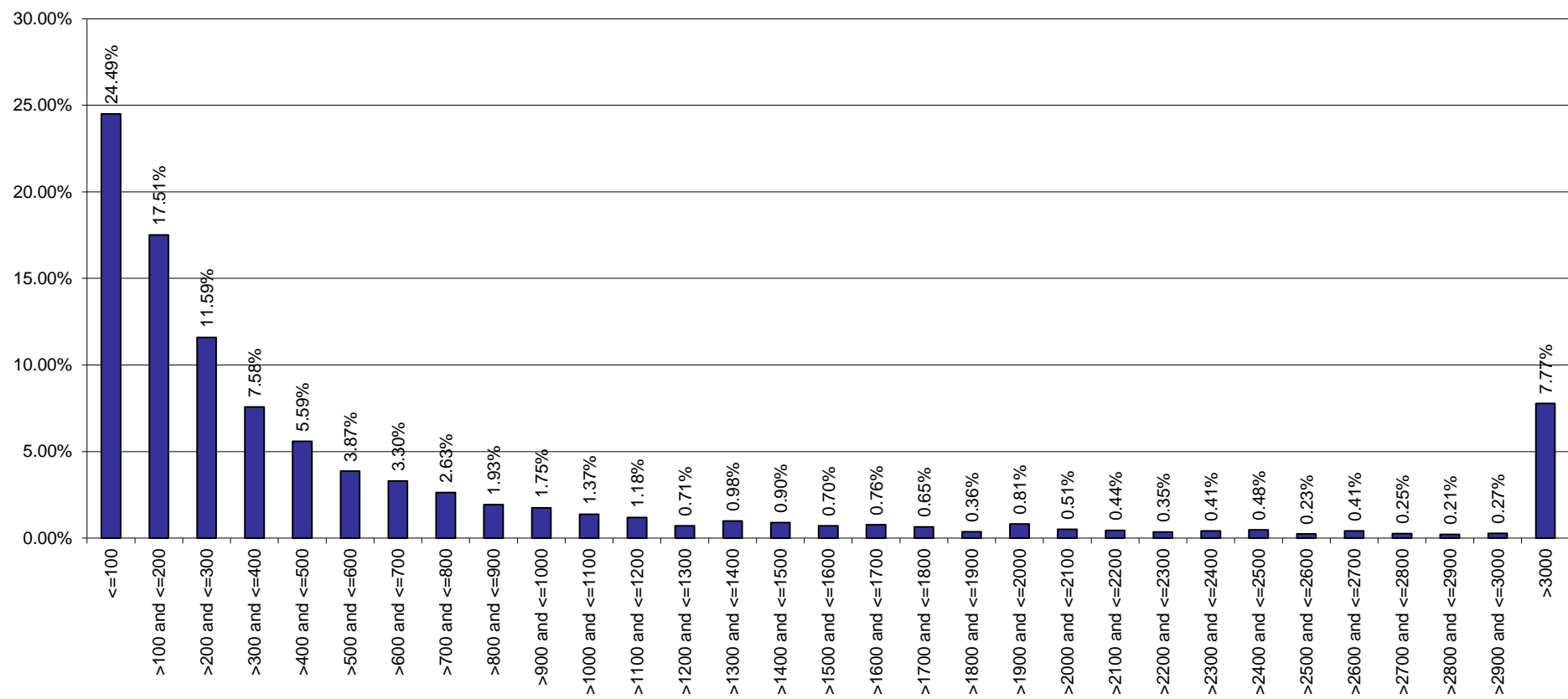
Portfolio Report:

Reporting month as of ultimo:

Esmee Master Issuer

December 2017

Size of Loans



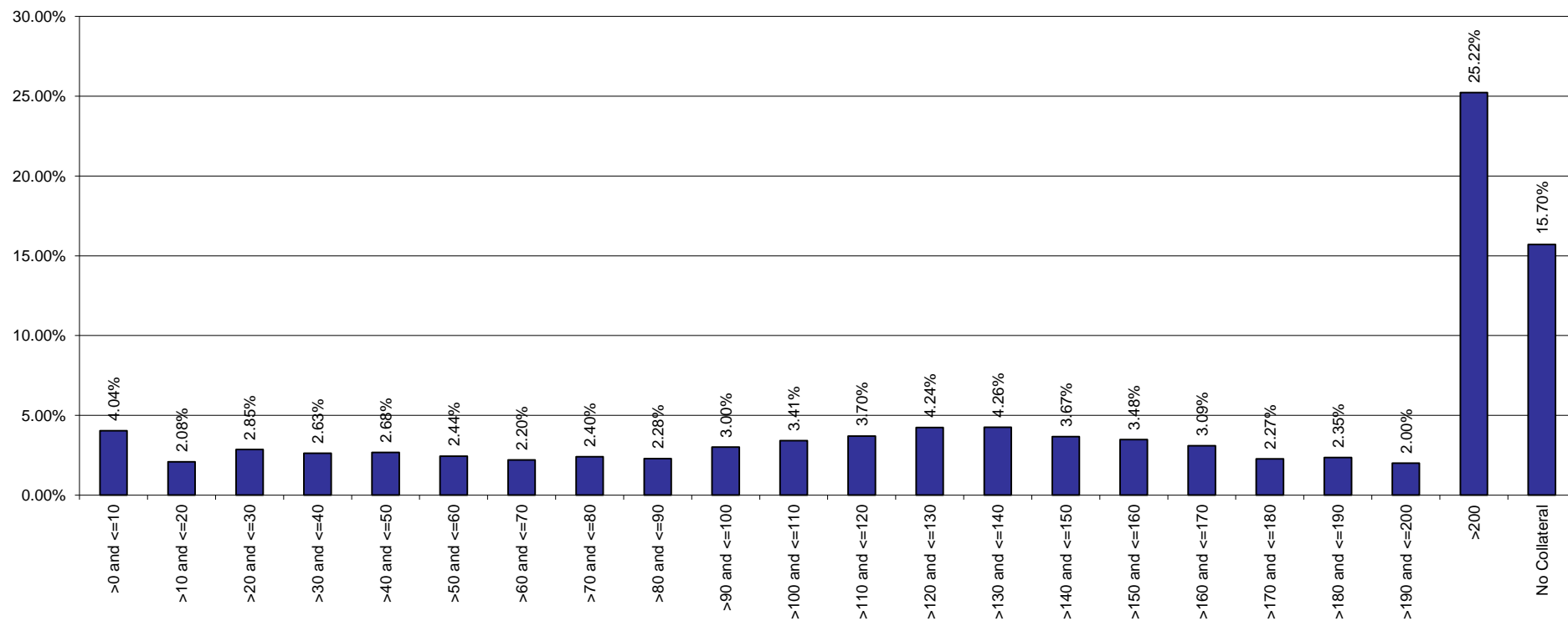
Portfolio Report:

Reporting month as of ultimo:

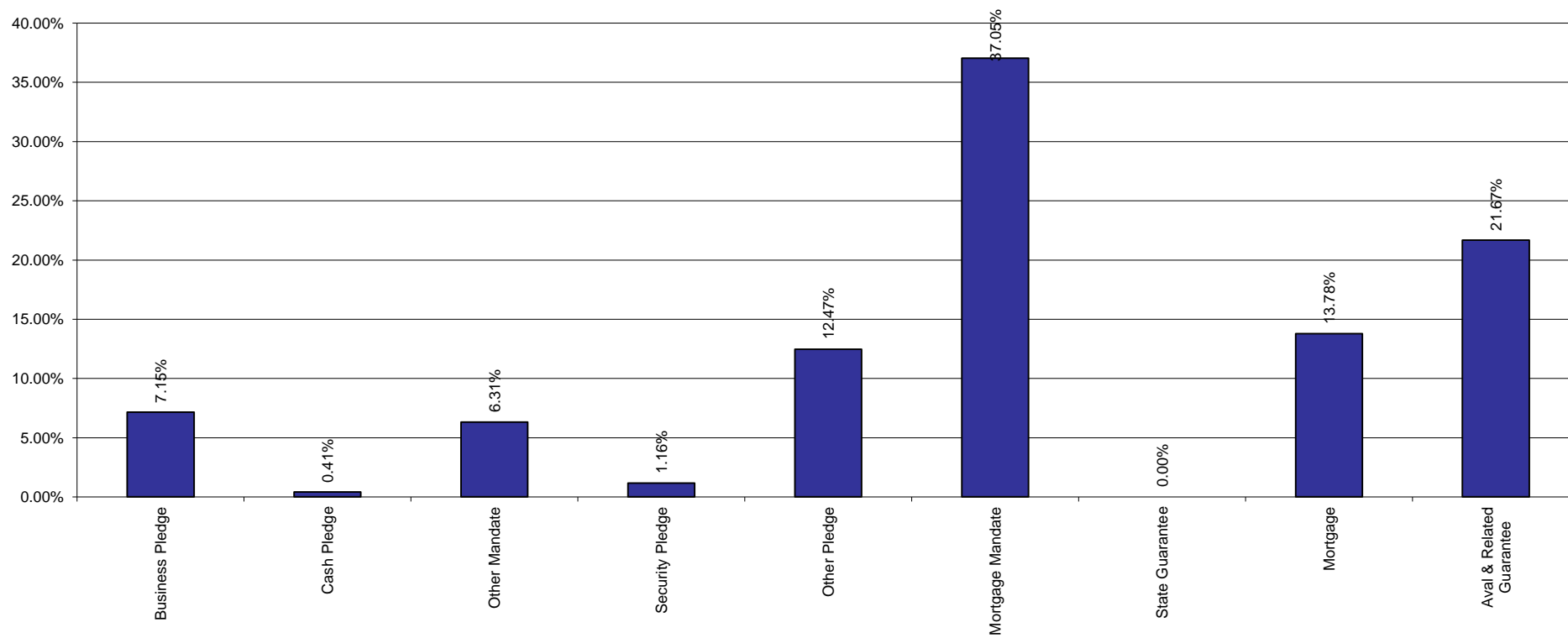
Esmee Master Issuer

December 2017

Collateral Ratio



Collaterals



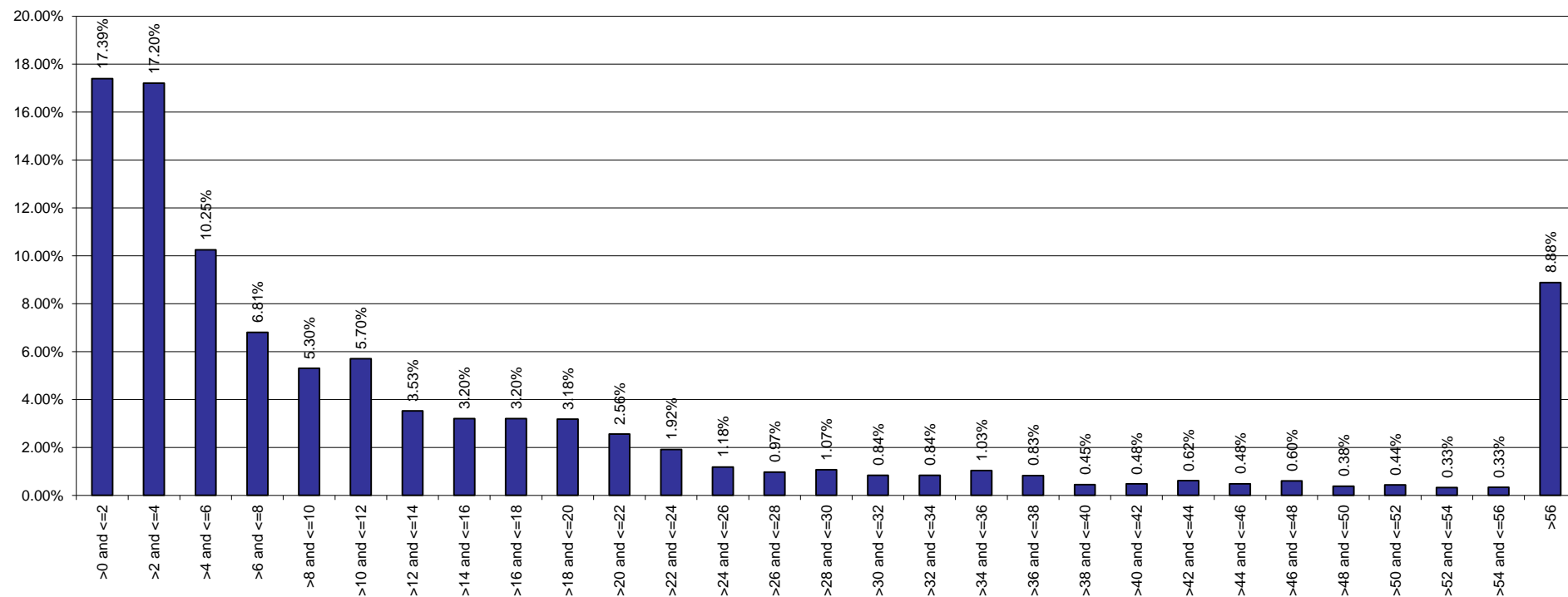
Portfolio Report:

Reporting month as of ultimo:

Esmee Master Issuer

December 2017

Yearly Expected Loss



Esmee Master Issuer

Pool Characteristics

Portfolio as of: 31-12-2017

1. Key characteristics

Outstanding Principal Balance	9,730,311,668
Nb Loans	127,658
Nb Clients	61,659
Avg Loan Size	76,222
Avg Client Size	157,808
WA PD (%)	382.13%
WA LGD (%)	1134.43%
WA Int Rate (%)	278.98%
WA Seasoning (Y)	4.27
WA Rem Maturity (Y)	7.68
WA WAL (Y)	4.14
Yearly Exp Loss (%) (WAPD*WALGD)	0.43%
Exp Loss (%) (WAPD*WALGD*AvgLife)	1.79%
WA Tot Collateral Ratio	172.59%

Esmee Master Issuer

Pool Characteristics

Portfolio as of: 31-12-2017

2. Business Unit

Business Unit	Outstanding Principal	%	No. of Loans	%
Retail Banking Belgium	6,636,244,162	68.20%	113,724	89.08%
Commercial Banking	2,564,557,581	26.36%	11,262	8.82%
Private Banking - Fortis	444,338,864	4.57%	2,612	2.05%
Investment Banking	77,422,922	0.80%	29	0.02%
Corporate & Public Banking	7,748,139	0.08%	31	0.02%
Energy,Commodities & Transp	0	0.00%	0	0.00%
Total	9,730,311,668	100.00%	127,658	100.00%

Esmee Master Issuer

Pool Characteristics

Portfolio as of: 31-12-2017

3. Products

Products	Outstanding Principal	%	No. of Loans	%
Investment Credit	8,195,062,548	84.22%	52,902	41.44%
Instalment Credit	1,392,634,831	14.31%	69,668	54.57%
Social & Fiscal Instalment	142,614,289	1.47%	5,088	3.99%
Total	9,730,311,668	100.00%	127,658	100.00%

Esmee Master Issuer

Pool Characteristics

Portfolio as of: 31-12-2017

4. Market Segment

Market Segment	Outstanding Principal	%	No. of Loans	%
Small Enterprise (IPS)	5,797,066,712	59.58%	87,898	68.85%
Medium-Sized Enterprise (MEC)	2,608,051,924	26.80%	11,559	9.05%
Professional (IPS)	791,984,005	8.14%	25,285	19.81%
Small Enterprise Personal Banking (IPS)	198,517,297	2.04%	1,380	1.08%
Private Banking (PRB)	192,953,343	1.98%	171	0.13%
Corporate (MEC)	88,863,016	0.91%	72	0.06%
Professional Personal Banking (IPS)	50,135,234	0.52%	1,048	0.82%
Individual Retail+ (IPS)	1,726,499	0.02%	68	0.05%
Individual (IPS)	1,013,639	0.01%	177	0.14%
Public Banking (MEC)	0	0.00%	0	0.00%
Total	9,730,311,668	100.00%	127,658	100.00%

Esmee Master Issuer

Pool Characteristics

Portfolio as of: 31-12-2017

5. Internal Rating

Internal Rating	Outstanding Principal	%	No. of Loans	%
Unknown	139,400,513	1.43%	1,674	1.31%
01.00	64,649,773	0.66%	859	0.67%
01.20	476,353	0.00%	3	0.00%
02.00	70,754,434	0.73%	2,080	1.63%
02.30	72,727	0.00%	1	0.00%
03.00	111,872,371	1.15%	2,712	2.12%
04.00	311,295,100	3.20%	5,484	4.30%
04.10	26,715,188	0.27%	23	0.02%
04.30	473,329	0.00%	1	0.00%
05.00	757,562,758	7.79%	13,075	10.24%
06.00	1,199,380,190	12.33%	16,520	12.94%
07.00	1,261,335,126	12.96%	15,235	11.93%
08.00	1,302,539,973	13.39%	14,843	11.63%
09.00	1,013,707,204	10.42%	11,076	8.68%
10.00	879,119,427	9.03%	9,320	7.30%
11.00	610,059,755	6.27%	6,633	5.20%
12.00	550,611,708	5.66%	5,403	4.23%
13.00	645,126,457	6.63%	10,001	7.83%
14.00	224,371,048	2.31%	3,000	2.35%
15.00	140,574,519	1.44%	1,842	1.44%
16.00	80,893,714	0.83%	1,252	0.98%
17.00	167,049,800	1.72%	2,574	2.02%
18.00	16,130,313	0.17%	198	0.16%
19.00	100,525,633	1.03%	856	0.67%
20.00	55,614,258	0.57%	2,993	2.34%
Total	9,730,311,668	100.00%	127,658	100.00%

Esmee Master Issuer

Pool Characteristics

Portfolio as of: 31-12-2017

6. Top 20 Clients

Top 20 Clients	Outstanding Principal	%	Internal Rating
1	39,840,000	10.75%	04.00
2	25,400,000	6.85%	08.00
3	22,000,000	5.94%	01.00
4	21,230,932	5.73%	08.00
5	21,090,000	5.69%	06.00
6	20,188,755	5.45%	07.00
7	19,116,125	5.16%	07.00
8	18,971,839	5.12%	06.00
9	18,103,678	4.88%	11.00
10	17,967,600	4.85%	08.00
11	17,961,375	4.85%	06.00
12	15,504,934	4.18%	01.00
13	15,451,519	4.17%	08.00
14	15,198,024	4.10%	07.00
15	14,820,005	4.00%	09.00
16	13,942,179	3.76%	07.00
17	13,870,122	3.74%	12.00
18	13,500,000	3.64%	
19	13,344,302	3.60%	12.00
20	13,156,906	3.55%	04.10
Total	370,658,295	100.00%	

Esmee Master Issuer

Pool Characteristics

Portfolio as of: 31-12-2017

7. Client Province

Client Province	Outstanding Principal	%	No. of Loans	%
West-Vlaanderen	1,742,817,992	17.91%	20,943	16.41%
Antwerpen	1,694,930,208	17.42%	20,484	16.05%
Oost-Vlaanderen	1,458,354,489	14.99%	19,894	15.58%
Brussels	889,827,746	9.14%	8,610	6.74%
Vlaams-Brabant	879,698,353	9.04%	11,219	8.79%
Hainaut	809,557,632	8.32%	11,803	9.25%
Limburg	725,421,959	7.46%	9,567	7.49%
Liège	623,252,812	6.41%	10,700	8.38%
Brabant Wallon	357,243,973	3.67%	4,967	3.89%
Namur	336,435,146	3.46%	5,781	4.53%
Luxembourg	212,653,244	2.19%	3,684	2.89%
Other	118,116	0.00%	6	0.00%
Total	9,730,311,668	100.00%	127,658	100.00%

Esmee Master Issuer

Pool Characteristics

Portfolio as of: 31-12-2017

8. Interest Rate

Interest Rate	Outstanding Principal	%	No. of Loans	%
<=3%	5,759,668,979	59.19%	78,503	61.49%
>3% and <=4%	1,656,471,255.79	17.02%	22,267	17.44%
>4% and <=5%	1,467,327,828.33	15.08%	15,257	11.95%
>5% and <=6%	743,032,051.98	7.64%	9,096	7.13%
>6% and <=7%	97,210,847.32	1.00%	2,098	1.64%
>7% and <=8%	5,877,480.42	0.06%	278	0.22%
>8% and <=9%	392,443.38	0.00%	91	0.07%
>9% and <=10%	186,978.05	0.00%	26	0.02%
>10%	143,804.16	0.00%	42	0.03%
Total	9,730,311,668	100.00%	127,658	100.00%

Esmee Master Issuer

Pool Characteristics

Portfolio as of: 31-12-2017

9. Interest Rate Type

Ranges (in year)	Outstanding Principal	%	No. of Loans	%
Fixed	8,504,325,194	87.40%	120,412	94.32%
Resettable	1,225,986,474	12.60%	7,246	5.68%
Total	9,730,311,668	100.00%	127,658	100.00%

Esmee Master Issuer

Pool Characteristics

Portfolio as of: 31-12-2017

10. Next Reset Date

Next Reset Date	Outstanding Principal	%	No. of Loans	%
2017	8,401,066	0.09%	77	0.06%
2018	642,455,781	6.60%	3,323	2.60%
2019	153,152,207	1.57%	941	0.74%
2020	134,275,355	1.38%	792	0.62%
2021	105,531,406	1.08%	477	0.37%
2022	59,318,916	0.61%	280	0.22%
2023	9,760,149	0.10%	46	0.04%
2024	8,542,903	0.09%	34	0.03%
2025	9,814,795	0.10%	28	0.02%
2026	7,954,802	0.08%	28	0.02%
2027	8,814,183	0.09%	28	0.02%
2028	5,211,720	0.05%	17	0.01%
2029	3,098,271	0.03%	14	0.01%
2030	3,195,027	0.03%	11	0.01%
2031	1,259,803	0.01%	5	0.00%
2032	994,358	0.01%	2	0.00%
2034	235,806	0.00%	1	0.00%
Fixed To Maturity	8,568,295,121	88.06%	121,554	95.22%
Total	9,730,311,668	100.00%	127,658	100.00%

Esmee Master Issuer

Pool Characteristics

Portfolio as of: 31-12-2017

11. Int. Payment Frequency

Int. Payment Freq.	Outstanding Principal	%	No. of Loans	%
Monthly	8,191,134,579	84.18%	119,911	93.93%
Quarterly	982,503,794	10.10%	2,118	1.66%
Twice A Year	105,729,794	1.09%	660	0.52%
Yearly	450,943,501	4.63%	4,969	3.89%
Unknown	0	0.00%	0	0.00%
Total	9,730,311,668	100.00%	127,658	100.00%

Esmee Master Issuer

Pool Characteristics

Portfolio as of: 31-12-2017

12. Sectors (Nace rev.2)

Sectors (Nave rev.2)	Outstanding Principal	%	No. of Loans	%
Wholesale And Retail Trade	1,829,050,630	18.80%	25,924	20.31%
Real Estate Activities	1,438,278,226	14.78%	7,568	5.93%
Professional, Scientific And Technical Activities	1,149,344,066	11.81%	14,314	11.21%
Construction	979,510,262	10.07%	19,571	15.33%
Manufacturing	862,876,047	8.87%	9,741	7.63%
Human Health And Social Work Activities	644,212,895	6.62%	9,538	7.47%
Agriculture, Forestry And Fishing	623,537,929	6.41%	9,856	7.72%
Financial And Insurance Activities	458,003,458	4.71%	3,351	2.62%
Accommodation And Food Service Activities	427,790,214	4.40%	7,254	5.68%
Transportation and Storage	422,359,659	4.34%	4,833	3.79%
Administrative And Support Service Activities	343,957,418	3.53%	6,301	4.94%
Other Service Activities	162,628,084	1.67%	3,240	2.54%
Information And Communication	149,916,752	1.54%	2,733	2.14%
Arts, Entertainment And Recreation	109,315,295	1.12%	1,768	1.38%
Water Supply; Sewerage And Waste Management	45,197,558	0.46%	412	0.32%
Unknown	28,648,393	0.29%	110	0.09%
Education	19,495,000	0.20%	412	0.32%
Electricity, Gas, Steam And Air Conditioning Supply	17,256,906	0.18%	392	0.31%
Private Individuals/Unknown	9,615,026	0.10%	65	0.05%
Mining And Quarrying	8,449,642	0.09%	268	0.21%
Activities Of Households As Employers	845,975	0.01%	5	0.00%
Public Administration And Defence; Compulsory Social Security	22,232	0.00%	2	0.00%
Total	9,730,311,668	100.00%	127,658	100.00%

Esmee Master Issuer

Pool Characteristics

Portfolio as of: 31-12-2017

13. Sectors (Nace rev.2-2 Digits)

Sector name	Outstanding Principal	%	No. of Loans	%
Real estate activities	1,438,278,226	14.78%	7,568	5.93%
Retail trade, except of motor vehicles and motorcycles	816,323,413	8.39%	12,609	9.88%
Wholesale trade, except of motor vehicles and motorcycles	723,478,569	7.44%	9,043	7.08%
Activities of head offices; management consultancy activities	618,789,053	6.36%	5,365	4.20%
Crop and animal production, hunting and related service activities	610,775,889	6.28%	9,540	7.47%
Specialised construction activities	570,460,215	5.86%	14,833	11.62%
Human health activities	462,334,752	4.75%	8,617	6.75%
Construction of buildings	353,666,077	3.63%	3,939	3.09%
Financial service activities, except insurance and pension funding	337,727,930	3.47%	1,562	1.22%
Wholesale and retail trade and repair of motor vehicles and motorcycles	289,248,647	2.97%	4,272	3.35%
Food and beverage service activities	283,504,515	2.91%	6,356	4.98%
Legal and accounting activities	273,587,203	2.81%	3,875	3.04%
Manufacture of food products	258,498,636	2.66%	2,329	1.82%
Land transport and transport via pipelines	255,183,547	2.62%	3,792	2.97%
Manufacture of fabricated metal products, except machinery and equipment	168,593,045	1.73%	2,369	1.86%
Residential care activities	147,666,722	1.52%	515	0.40%
Accommodation	144,285,699	1.48%	898	0.70%
Warehousing and support activities for transportation	144,191,355	1.48%	597	0.47%
Architectural and engineering activities; technical testing and analysis	135,640,976	1.39%	2,738	2.14%
Activities auxiliary to financial services and insurance activities	118,657,808	1.22%	1,779	1.39%
Other personal service activities	114,814,278	1.18%	2,789	2.18%
Services to buildings and landscape activities	113,730,382	1.17%	3,124	2.45%
Office administrative, office support and other business support activities	112,335,202	1.15%	1,206	0.94%
Computer programming, consultancy and related activities	106,185,777	1.09%	1,969	1.54%
Rental and leasing activities	93,067,243	0.96%	1,510	1.18%
Sports activities and amusement and recreation activities	78,511,035	0.81%	1,200	0.94%
Advertising and market research	61,292,092	0.63%	935	0.73%
Civil engineering	55,383,970	0.57%	799	0.63%
Manufacture of chemicals and chemical products	52,502,803	0.54%	189	0.15%
Manufacture of other non-metallic mineral products	49,010,334	0.50%	436	0.34%
Manufacture of machinery and equipment n.e.c.	42,621,904	0.44%	502	0.39%
Activities of membership organisations	39,092,830	0.40%	161	0.13%
Waste collection, treatment and disposal activities; materials recovery	36,789,830	0.38%	309	0.24%
Manufacture of rubber and plastic products	35,441,634	0.36%	296	0.23%
Printing and reproduction of recorded media	34,832,965	0.36%	701	0.55%
Manufacture of furniture	34,802,132	0.36%	584	0.46%
Social work activities without accommodation	34,211,422	0.35%	406	0.32%
Electricity, gas, steam and air conditioning supply	28,648,393	0.29%	110	0.09%

Esmee Master Issuer

Pool Characteristics

Portfolio as of: 31-12-2017

13. Sectors (Nace rev.2-2 Digits)

Sector name	Outstanding Principal	%	No. of Loans	%
Manufacture of wood and of products of wood and cork, except furniture;	25,167,467	0.26%	434	0.34%
Other professional, scientific and technical activities	24,858,256	0.26%	704	0.55%
Veterinary activities	24,032,734	0.25%	629	0.49%
Creative, arts and entertainment activities	23,536,921	0.24%	493	0.39%
Motion picture, video and television programme production, sound recording and music publishing activities	22,214,298	0.23%	357	0.28%
Other manufacturing	22,137,471	0.23%	364	0.29%
Repair and installation of machinery and equipment	21,445,109	0.22%	410	0.32%
Manufacture of motor vehicles, trailers and semi-trailers	20,882,200	0.21%	66	0.05%
other	19,495,000	0.20%	412	0.32%
Manufacture of beverages	18,494,787	0.19%	145	0.11%
Education	17,256,906	0.18%	392	0.31%
Manufacture of paper and paper products	17,138,431	0.18%	125	0.10%
Water transport	15,578,308	0.16%	165	0.13%
Manufacture of textiles	15,515,468	0.16%	233	0.18%
Manufacture of electrical equipment	12,180,534	0.13%	161	0.13%
Manufacture of basic pharmaceutical products and pharmaceutical preparations	12,009,565	0.12%	72	0.06%
Scientific research and development	11,143,752	0.11%	68	0.05%
Travel agency, tour operator and other reservation service and related activities	10,815,000	0.11%	225	0.18%
Publishing activities	10,747,592	0.11%	139	0.11%
Employment activities	10,568,352	0.11%	172	0.13%
Other mining and quarrying	9,615,026	0.10%	65	0.05%
Forestry and logging	8,959,731	0.09%	282	0.22%
Manufacture of wearing apparel	8,856,140	0.09%	119	0.09%
Repair of computers and personal and household goods	8,720,976	0.09%	290	0.23%
Activities of extraterritorial organisations and bodies/Unknown	8,449,642	0.09%	268	0.21%
Information service activities	7,748,814	0.08%	186	0.15%
Postal and courier activities	6,940,039	0.07%	265	0.21%
Manufacture of computer, electronic and optical products	6,082,267	0.06%	93	0.07%
Sewerage	4,953,209	0.05%	78	0.06%
Libraries, archives, museums and other cultural activities	3,852,558	0.04%	42	0.03%
Fishing and aquaculture	3,802,309	0.04%	34	0.03%
Security and investigation activities	3,441,239	0.04%	64	0.05%
Gambling and betting activities	3,414,781	0.04%	33	0.03%
Remediation activities and other waste management services	3,402,073	0.03%	24	0.02%
Telecommunications	2,529,501	0.03%	70	0.05%
Manufacture of tobacco products	1,961,465	0.02%	15	0.01%
Manufacture of other transport equipment	1,888,233	0.02%	35	0.03%
Manufacture of basic metals	1,619,082	0.02%	31	0.02%

Esmee Master Issuer

Pool Characteristics

Portfolio as of: 31-12-2017

13. Sectors (Nace rev.2-2 Digits)

Sector name	Outstanding Principal	%	No. of Loans	%
Insurance, reinsurance and pension funding, except compulsory social se	1,617,721	0.02%	10	0.01%
Manufacture of leather and related products	1,029,311	0.01%	22	0.02%
Activities of households as employers of domestic personnel	845,975	0.01%	5	0.00%
Programming and broadcasting activities	490,769	0.01%	12	0.01%
Air transport	466,409	0.00%	14	0.01%
Manufacture of coke and refined petroleum products	165,066	0.00%	10	0.01%
Water collection, treatment and supply	52,447	0.00%	1	0.00%
Public administration and defence; compulsory social security	22,232	0.00%	2	0.00%
Total	9,730,311,668	100.00%	127,658	100.00%

Esmee Master Issuer

Pool Characteristics

Portfolio as of: 31-12-2017

14. Arrears

Arrears	Outstanding Principal	%	No. of Loans	%
Current	9,576,006,719	98.41%	123,463	96.71%
> 0 and <= 30	69,571,528	0.71%	1,152	0.90%
> 30 and <= 60	16,498,715	0.17%	235	0.18%
> 60 and <= 90	7,772,346	0.08%	122	0.10%
> 90 and <= 120	2,728,094	0.03%	41	0.03%
> 120 and <= 150	3,163,947	0.03%	45	0.04%
> 150 and <= 180	1,987,253	0.02%	40	0.03%
> 180	52,583,067	0.54%	2,560	2.01%
Total	9,730,311,668	100.00%	127,658	100.00%

Esmee Master Issuer

Pool Characteristics

Portfolio as of: 31-12-2017

15. Redemption Type

Redemption Type	Outstanding Principal	%	No. of Loans	%
Annuity	6,267,948,717	64.42%	104,667	81.99%
Bullet	198,840,870	2.04%	214	0.17%
Linear	3,263,486,896	33.54%	22,776	17.84%
Other	35,185	0.00%	1	0.00%
Total	9,730,311,668	100.00%	127,658	100.00%

Esmee Master Issuer

Pool Characteristics

Portfolio as of: 31-12-2017

16. Origination Year

Origination Year	Outstanding Principal	%	No. of Loans	%
2000	12,992,121	0.13%	371	0.29%
2001	16,390,001	0.17%	349	0.27%
2002	22,568,750	0.23%	470	0.37%
2003	41,567,178	0.43%	1,146	0.90%
2004	53,566,762	0.55%	1,067	0.84%
2005	112,300,906	1.15%	1,412	1.11%
2006	204,860,512	2.11%	1,888	1.48%
2007	296,089,104	3.04%	2,710	2.12%
2008	372,390,679	3.83%	4,267	3.34%
2009	368,685,172	3.79%	4,019	3.15%
2010	525,893,482	5.40%	5,005	3.92%
2011	701,149,385	7.21%	6,411	5.02%
2012	707,266,297	7.27%	5,964	4.67%
2013	818,301,345	8.41%	12,355	9.68%
2014	873,719,944	8.98%	17,398	13.63%
2015	1,415,582,552	14.55%	22,791	17.85%
2016	1,664,376,340	17.11%	19,722	15.45%
2017	1,522,611,139	15.65%	20,313	15.91%
Total	9,730,311,668	100.00%	127,658	100.00%

Esmee Master Issuer

Pool Characteristics

Portfolio as of: 31-12-2017

17. Remaining Maturity (years)

Remaining Maturity (years)	Outstanding Principal	%	No. of Loans	%
<=1	416,693,749	4.28%	33,199	26.01%
>1 and <=2	484,228,853	4.98%	21,593	16.91%
>2 and <=3	672,757,374	6.91%	18,847	14.76%
>3 and <=4	885,253,035	9.10%	14,924	11.69%
>4 and <=5	1,008,687,801	10.37%	10,681	8.37%
>5 and <=6	607,090,340	6.24%	4,261	3.34%
>6 and <=7	601,251,264	6.18%	3,526	2.76%
>7 and <=8	547,355,237	5.63%	3,191	2.50%
>8 and <=9	721,989,837	7.42%	3,480	2.73%
>9 and <=10	679,339,317	6.98%	3,122	2.45%
>10 and <=11	500,515,757	5.14%	2,122	1.66%
>11 and <=12	537,845,626	5.53%	2,131	1.67%
>12 and <=13	627,542,179	6.45%	2,249	1.76%
>13 and <=14	608,768,189	6.26%	2,053	1.61%
>14 and <=15	458,924,959	4.72%	1,317	1.03%
>15 and <=16	123,366,324	1.27%	319	0.25%
>16 and <=17	57,639,527	0.59%	181	0.14%
>17 and <=18	62,758,135	0.64%	142	0.11%
>18 and <=19	43,447,437	0.45%	121	0.09%
>19 and <=20	73,909,620	0.76%	173	0.14%
>20 and <=21	8,456,205	0.09%	18	0.01%
>21 and <=22	1,053,365	0.01%	3	0.00%
>22 and <=23	428,885	0.00%	1	0.00%
>23 and <=24	433,653	0.00%	3	0.00%
>29 and <=30	575,000	0.01%	1	0.00%
Total	9,730,311,668	100.00%	127,658	100.00%

Esmee Master Issuer

Pool Characteristics

Portfolio as of: 31-12-2017

18. Original Maturity (years)

Original Maturity (years)	Outstanding Principal	%	No. of Loans	%
<=1	109,083,476	1.12%	4,666	3.66%
>1 and <=2	76,399,024	0.79%	2,958	2.32%
>2 and <=3	73,910,707	0.76%	4,163	3.26%
>3 and <=4	183,202,327	1.88%	10,717	8.40%
>4 and <=5	717,878,783	7.38%	30,927	24.23%
>5 and <=6	930,366,586	9.56%	22,607	17.71%
>6 and <=7	199,632,949	2.05%	2,077	1.63%
>7 and <=8	613,550,323	6.31%	6,225	4.88%
>8 and <=9	151,697,206	1.56%	1,349	1.06%
>9 and <=10	417,441,416	4.29%	4,646	3.64%
>10 and <=11	1,204,411,202	12.38%	10,884	8.53%
>11 and <=12	108,432,113	1.11%	675	0.53%
>12 and <=13	175,916,710	1.81%	856	0.67%
>13 and <=14	87,669,052	0.90%	428	0.34%
>14 and <=15	674,428,800	6.93%	3,743	2.93%
>15 and <=16	2,175,645,836	22.36%	11,881	9.31%
>16 and <=17	274,297,840	2.82%	1,003	0.79%
>17 and <=18	94,016,129	0.97%	320	0.25%
>18 and <=19	65,282,118	0.67%	284	0.22%
>19 and <=20	380,119,934	3.91%	2,002	1.57%
>20 and <=21	808,590,781	8.31%	4,626	3.62%
>21 and <=22	129,721,585	1.33%	410	0.32%
>22 and <=23	27,233,831	0.28%	59	0.05%
>23 and <=24	2,099,125	0.02%	9	0.01%
>24 and <=25	7,716,647	0.08%	28	0.02%
>25 and <=26	16,443,221	0.17%	80	0.06%
>26 and <=27	16,276,921	0.17%	18	0.01%
>27 and <=28	1,508,760	0.02%	2	0.00%
>28 and <=29	3,313,032	0.03%	1	0.00%
>29 and <=30	1,792,106	0.02%	5	0.00%
>30 and <=31	2,233,127	0.02%	9	0.01%
Total	9,730,311,668	100.00%	127,658	100.00%

Esmee Master Issuer

Pool Characteristics

Portfolio as of: 31-12-2017

19. LGD

LGD Range (%)	Outstanding Principal	%	No. of Loans	%
<=0	3,572,671	0.04%	10	0.01%
>0 and <=10	6,435,314,561	66.14%	77,407	60.64%
>10 and <=20	1,402,643,285	14.42%	11,657	9.13%
>20 and <=30	858,707,681	8.83%	9,808	7.68%
>30 and <=40	470,384,335	4.83%	9,581	7.51%
>40 and <=50	366,481,128	3.77%	8,377	6.56%
>50 and <=60	149,861,985	1.54%	8,143	6.38%
>60 and <=70	12,512,920	0.13%	403	0.32%
>70 and <=80	7,846,087	0.08%	518	0.41%
>80	22,987,016	0.24%	1,565	1.23%
Unknown			189	0.15%
Terminated	0	0.00%	4,090	3.04%
Total	9,730,311,668	100.00%	131,748	103.04%

Esmee Master Issuer

Pool Characteristics

Portfolio as of: 31-12-2017

20. Size of Loans

Range (eur 1000)	Outstanding Principal	%	No. of Loans	%
<=100	2,383,402,233	24.49%	104,877	82.15%
>100 and <=200	1,703,833,976	17.51%	12,015	9.41%
>200 and <=300	1,127,897,369	11.59%	4,618	3.62%
>300 and <=400	737,365,897	7.58%	2,138	1.67%
>400 and <=500	543,533,322	5.59%	1,213	0.95%
>500 and <=600	376,242,998	3.87%	687	0.54%
>600 and <=700	321,444,929	3.30%	497	0.39%
>700 and <=800	255,445,611	2.63%	341	0.27%
>800 and <=900	187,485,298	1.93%	221	0.17%
>900 and <=1000	170,334,645	1.75%	179	0.14%
>1000 and <=1100	133,523,367	1.37%	127	0.10%
>1100 and <=1200	115,171,872	1.18%	100	0.08%
>1200 and <=1300	69,221,887	0.71%	55	0.04%
>1300 and <=1400	95,777,833	0.98%	71	0.06%
>1400 and <=1500	87,207,400	0.90%	60	0.05%
>1500 and <=1600	68,281,507	0.70%	44	0.03%
>1600 and <=1700	74,296,016	0.76%	45	0.04%
>1700 and <=1800	63,178,174	0.65%	36	0.03%
>1800 and <=1900	35,127,875	0.36%	19	0.01%
>1900 and <=2000	78,691,057	0.81%	40	0.03%
>2000 and <=2100	49,209,203	0.51%	24	0.02%
>2100 and <=2200	43,124,775	0.44%	20	0.02%
>2200 and <=2300	33,825,430	0.35%	15	0.01%
>2300 and <=2400	40,013,490	0.41%	17	0.01%
>2400 and <=2500	46,760,216	0.48%	19	0.01%
>2500 and <=2600	22,862,025	0.23%	9	0.01%
>2600 and <=2700	39,794,070	0.41%	15	0.01%
>2700 and <=2800	24,694,944	0.25%	9	0.01%
>2800 and <=2900	20,009,041	0.21%	7	0.01%
>2900 and <=3000	26,627,340	0.27%	9	0.01%
>3000	755,927,866	7.77%	131	0.10%
Total	9,730,311,668	100.00%	127,658	100.00%

Esmee Master Issuer

Pool Characteristics

Portfolio as of: 31-12-2017

21. Collateral Ratio

Range (%)	Outstanding Principal	%	No. of Loans	%
>0 and <=10	393,877,543	4.04%	1,590	1.21%
>10 and <=20	202,881,515	2.08%	1,283	0.98%
>20 and <=30	278,568,651	2.85%	1,803	1.37%
>30 and <=40	256,667,143	2.63%	1,813	1.38%
>40 and <=50	261,124,143	2.68%	2,119	1.61%
>50 and <=60	238,293,785	2.44%	1,952	1.49%
>60 and <=70	214,562,932	2.20%	1,988	1.51%
>70 and <=80	234,020,824	2.40%	2,317	1.76%
>80 and <=90	222,662,972	2.28%	2,382	1.81%
>90 and <=100	293,302,074	3.00%	2,764	2.10%
>100 and <=110	332,933,916	3.41%	3,234	2.46%
>110 and <=120	361,424,413	3.70%	3,737	2.84%
>120 and <=130	413,846,081	4.24%	3,666	2.79%
>130 and <=140	415,420,501	4.26%	3,882	2.95%
>140 and <=150	357,768,999	3.67%	3,440	2.62%
>150 and <=160	339,887,730	3.48%	3,315	2.52%
>160 and <=170	301,757,166	3.09%	2,929	2.23%
>170 and <=180	221,977,717	2.27%	2,631	2.00%
>180 and <=190	229,378,519	2.35%	2,598	1.98%
>190 and <=200	195,483,246	2.00%	2,228	1.70%
>200	2,461,958,802	25.22%	55,916	42.54%
No Collateral	1,532,797,966	15.70%	23,853	18.15%
Total	9,760,596,638	100.00%	131,440	100.00%

Esmee Master Issuer

Pool Characteristics

Portfolio as of: 31-12-2017

22. Collaterals

Collateral Type	Amount	%
Business Pledge	1,222,324,257	7.15%
Cash Pledge	70,744,559	0.41%
Other Mandate	1,078,524,796	6.31%
Security Pledge	197,698,565	1.16%
Other Pledge	2,132,150,216	12.47%
Mortgage Mandate	6,335,426,336	37.05%
State Guarantee	0	0.00%
Mortgage	2,356,899,274	13.78%
Aval & Related Guarantee	3,705,801,998	21.67%
Total	17,099,570,001	100.00%

Esmee Master Issuer

Pool Characteristics

Portfolio as of: 31-12-2017

23. Yearly Expected Loss

Range (%)	Outstanding Principal	%	No. of Loans	%
>0 and <=2	1,692,495,203	17.39%	21,263	16.66%
>2 and <=4	1,673,929,022	17.20%	20,292	15.90%
>4 and <=6	997,257,224	10.25%	11,462	8.98%
>6 and <=8	662,162,993	6.81%	7,571	5.93%
>8 and <=10	515,924,537	5.30%	6,132	4.80%
>10 and <=12	554,788,536	5.70%	5,369	4.21%
>12 and <=14	343,366,705	3.53%	4,105	3.22%
>14 and <=16	311,314,657	3.20%	3,737	2.93%
>16 and <=18	311,786,212	3.20%	3,546	2.78%
>18 and <=20	309,224,702	3.18%	4,111	3.22%
>20 and <=22	248,977,725	2.56%	3,198	2.51%
>22 and <=24	186,366,705	1.92%	3,030	2.37%
>24 and <=26	115,020,682	1.18%	1,960	1.54%
>26 and <=28	94,624,088	0.97%	1,741	1.36%
>28 and <=30	103,661,330	1.07%	1,530	1.20%
>30 and <=32	81,911,303	0.84%	1,315	1.03%
>32 and <=34	81,976,593	0.84%	1,264	0.99%
>34 and <=36	100,653,209	1.03%	1,083	0.85%
>36 and <=38	80,535,891	0.83%	966	0.76%
>38 and <=40	43,659,537	0.45%	838	0.66%
>40 and <=42	46,640,441	0.48%	893	0.70%
>42 and <=44	60,196,904	0.62%	908	0.71%
>44 and <=46	46,923,339	0.48%	696	0.55%
>46 and <=48	58,818,200	0.60%	686	0.54%
>48 and <=50	37,052,919	0.38%	578	0.45%
>50 and <=52	42,389,123	0.44%	628	0.49%
>52 and <=54	32,260,617	0.33%	579	0.45%
>54 and <=56	32,335,272	0.33%	490	0.38%
>56	864,057,999	8.88%	17,498	13.71%
Unknown			189	0.15%
Total	9,730,311,668	100.00%	127,658	100.00%