

Esmee Master Issuer

Report date: 31 March 2024

PORTFOLIO REPORT

Portfolio Report:

Reporting month as of ultimo:

Esmee Master Issuer

March 2024

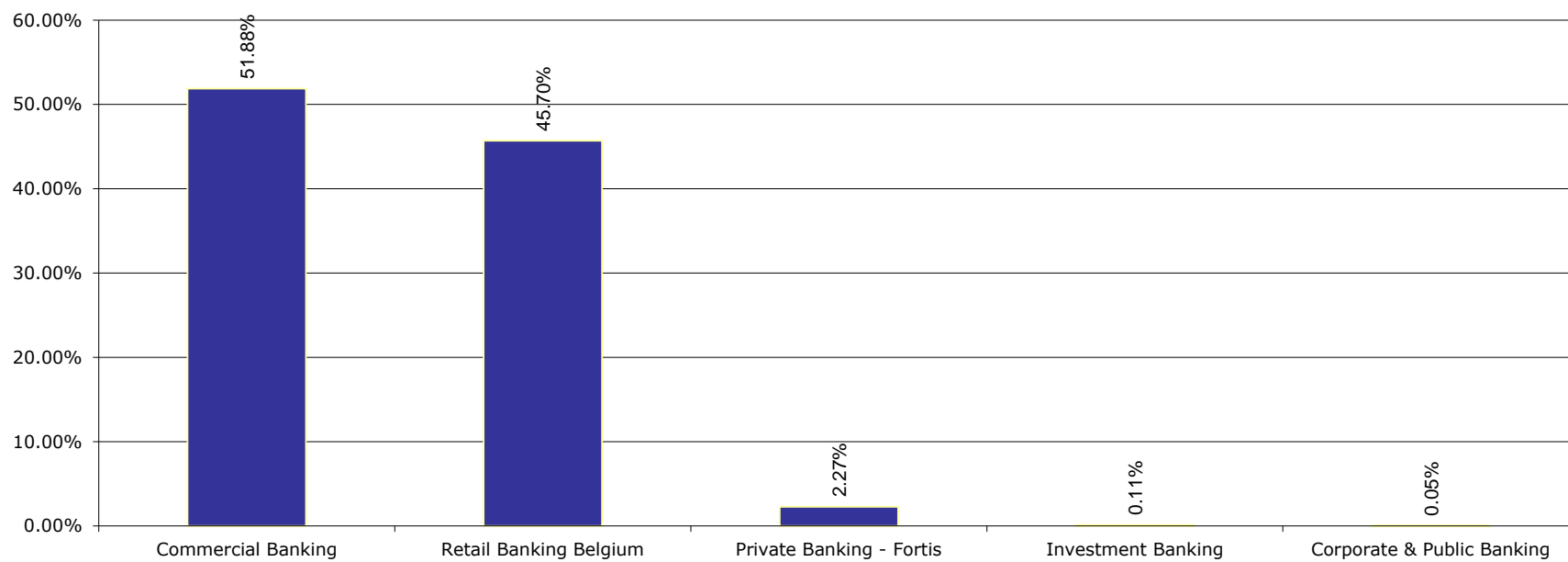
Key Characteristics

Oustanding Principal Balance (EUR)	9,835,436,622
Average Loan Size (EUR)	125,668
Average Client Size (EUR)	214,701
Number of Loans	78,265
Number of Clients	45,810
Weighted Average PD (%)	3.11%
Weighted Average LGD (%)	10.84%
Weighted Average Interest Rate (%)	2.37%
Weighted Average Seasoning (years)	4.98
Weighted Average Remaining Maturity (years)	8.77
Weighted Average WAL (years)	4.75
Yearly Expected Loss (%) (WAPD*WALGD)	0.34%
Expected Loss (%) (WAPD*WALGD*AvgLife)	1.60%
WA Tot Collateral Ratio	417.35%

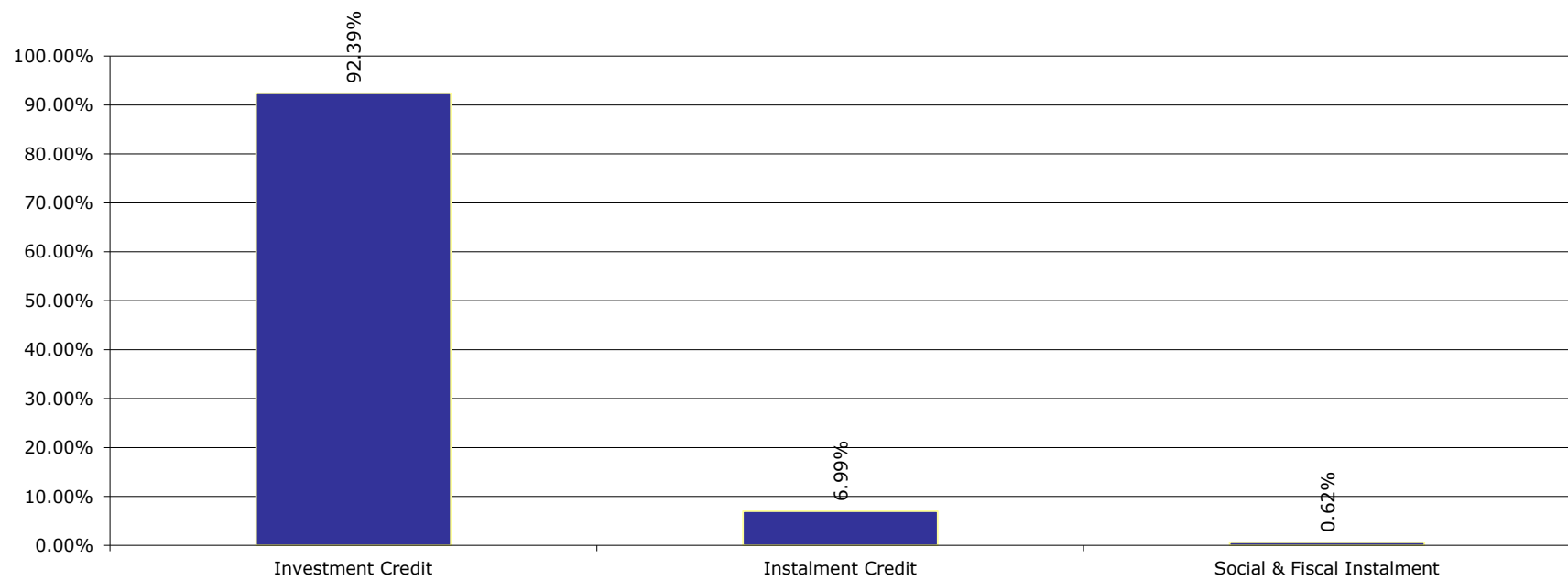
Portfolio Report:
Reporting month as of ultimo:

Esmee Master Issuer
March 2024

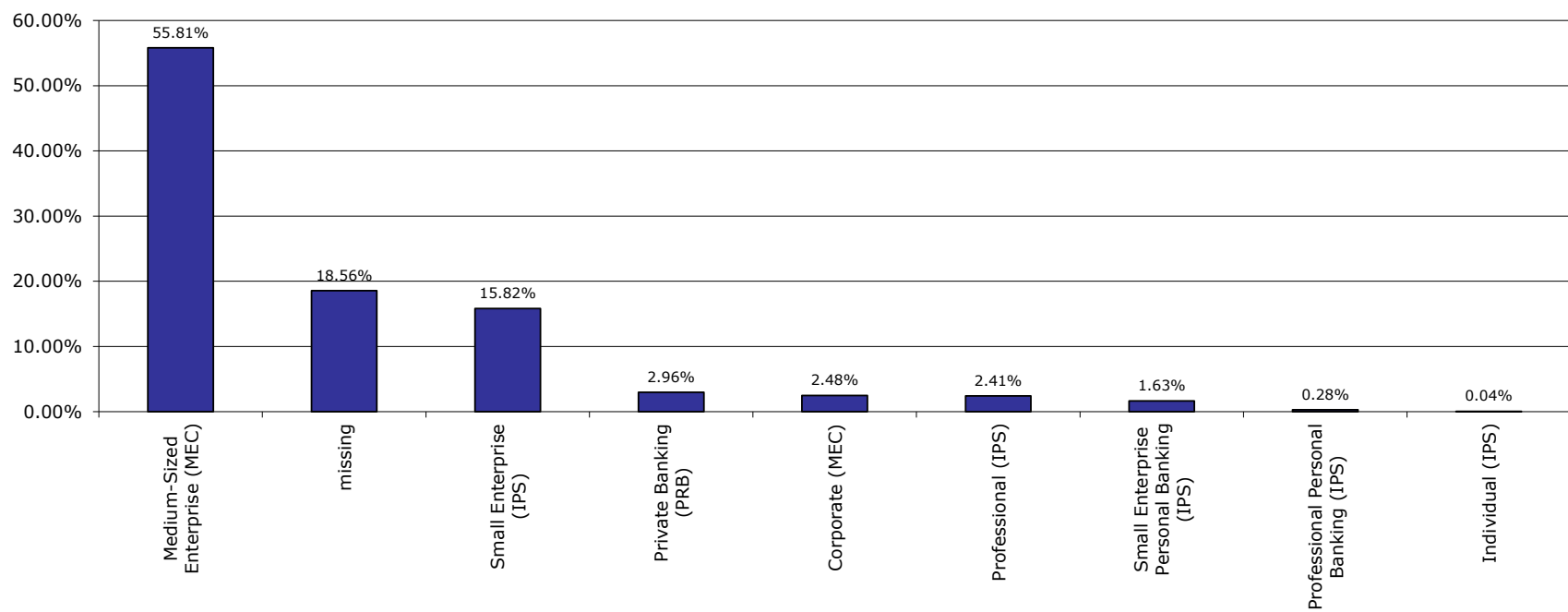
Business Unit



Products



Market Segment



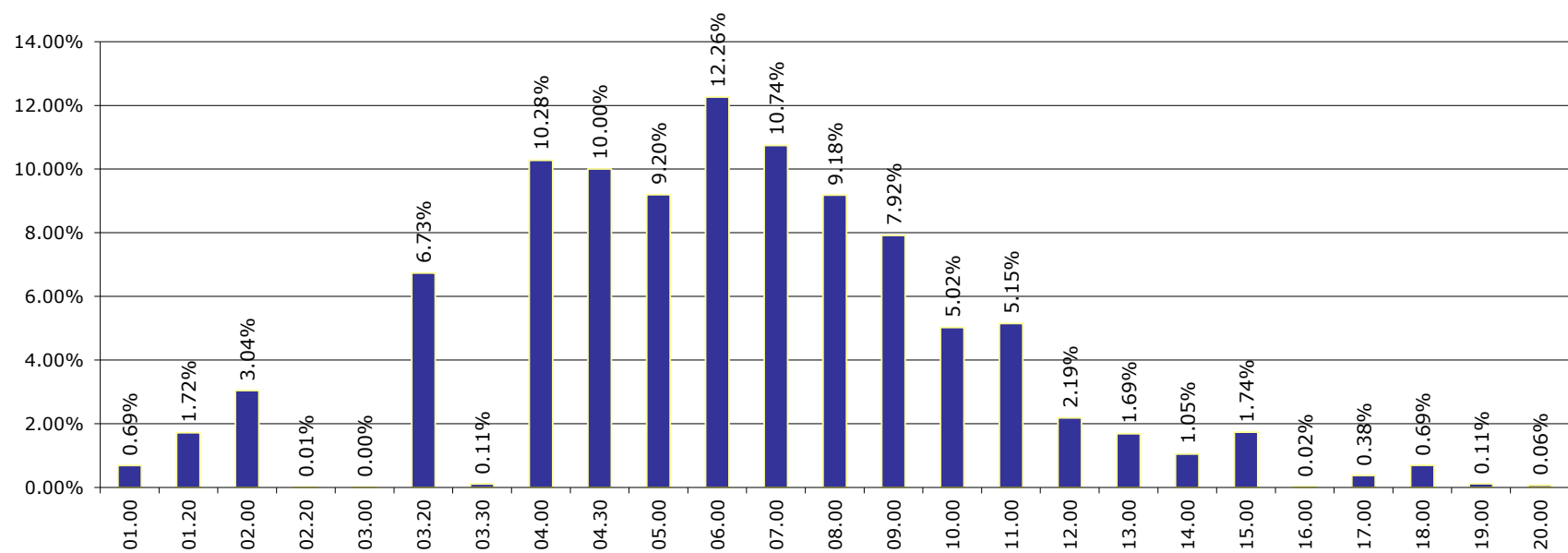
Portfolio Report:

Reporting month as of ultimo:

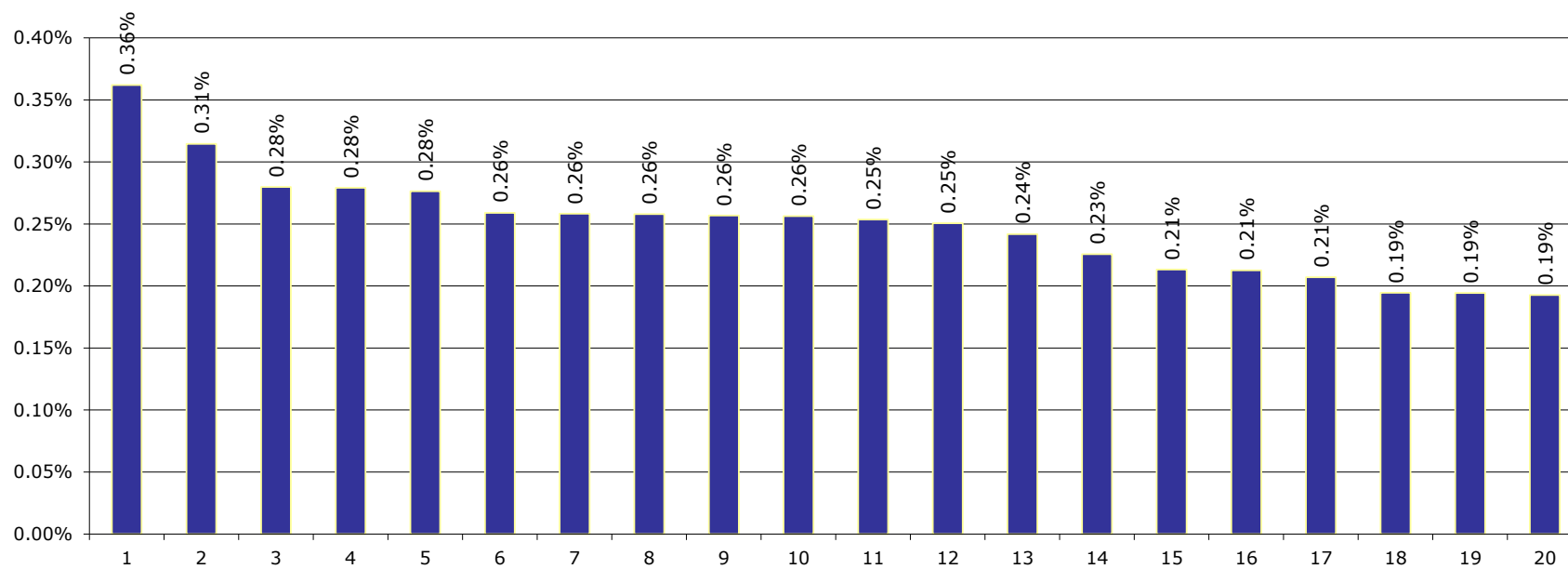
Esmee Master Issuer

March 2024

Internal Rating



Top 20 Clients



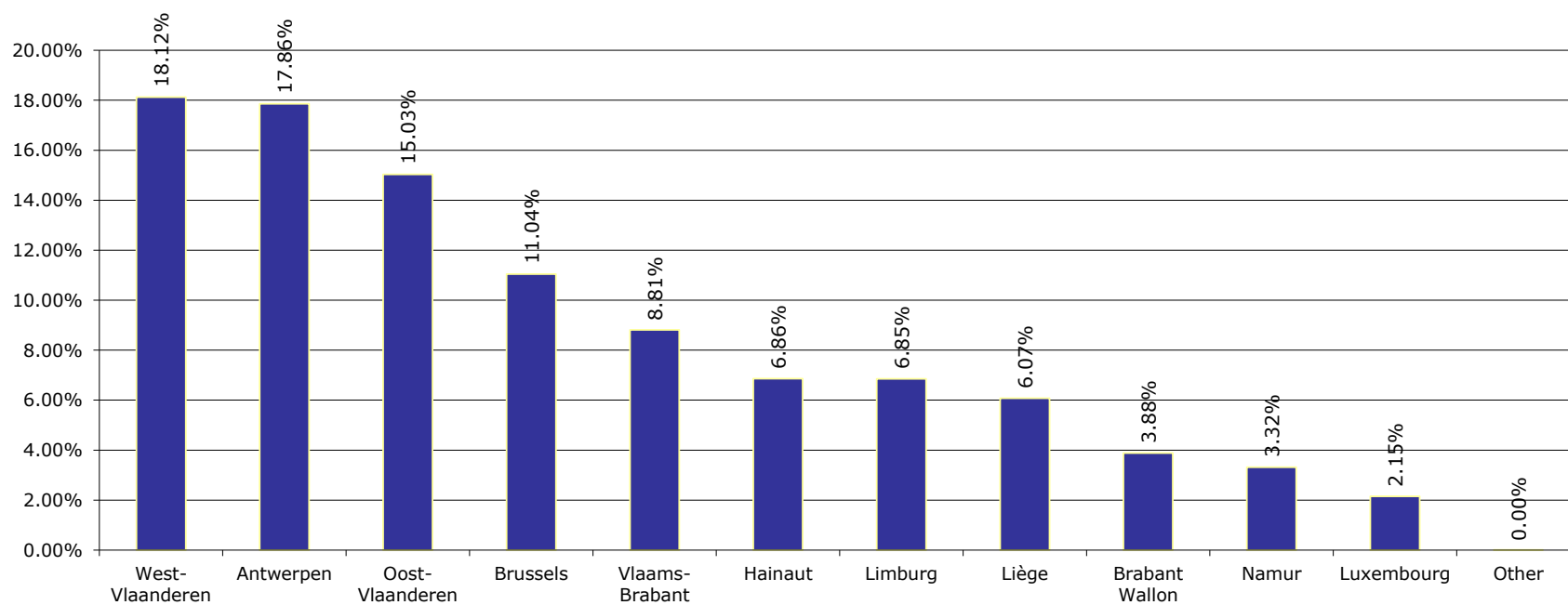
Portfolio Report:

Reporting month as of ultimo:

Esmee Master Issuer

March 2024

Client Province



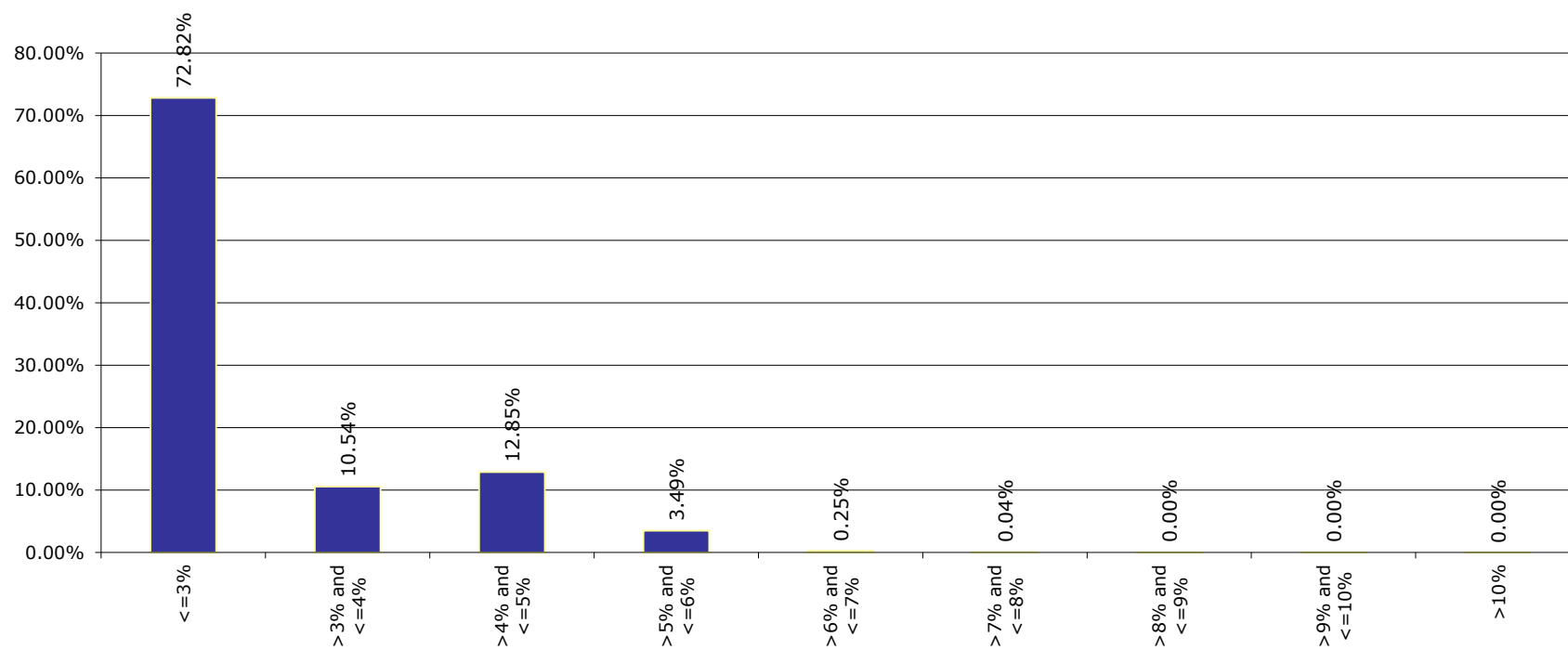
Portfolio Report:

Reporting month as of ultimo:

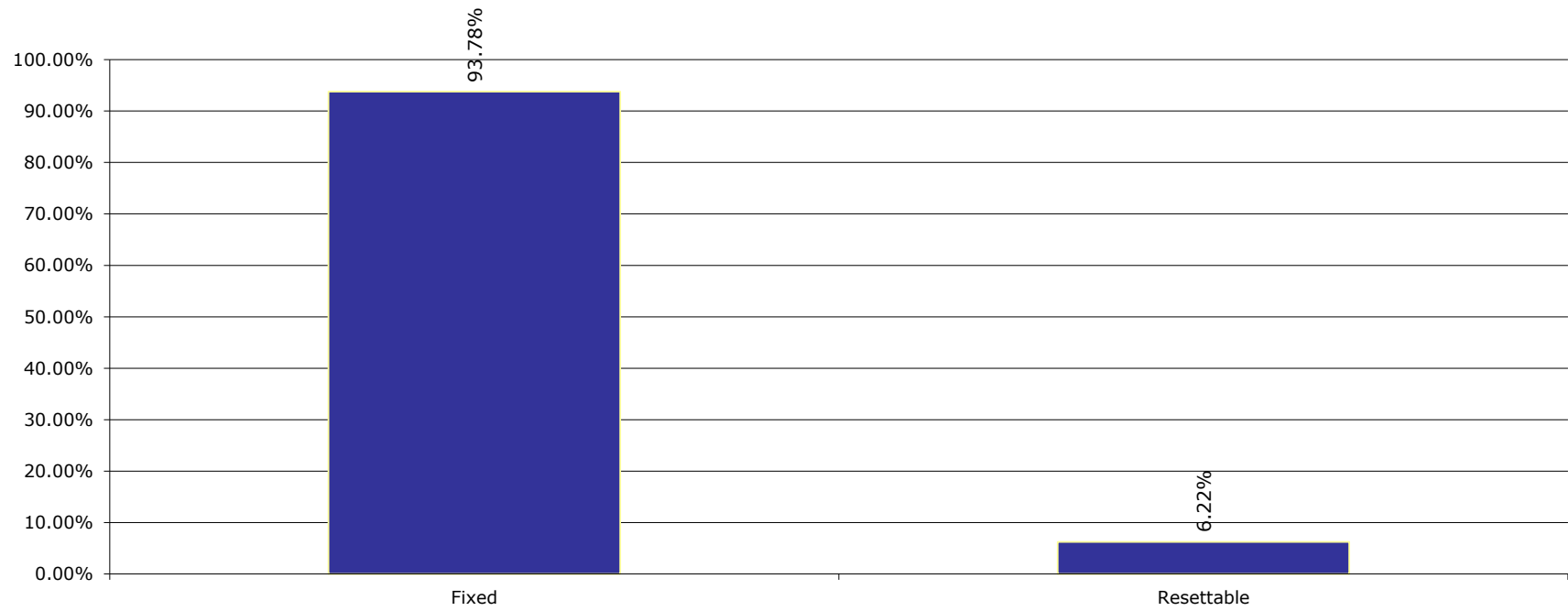
Esmee Master Issuer

March 2024

Interest Rate



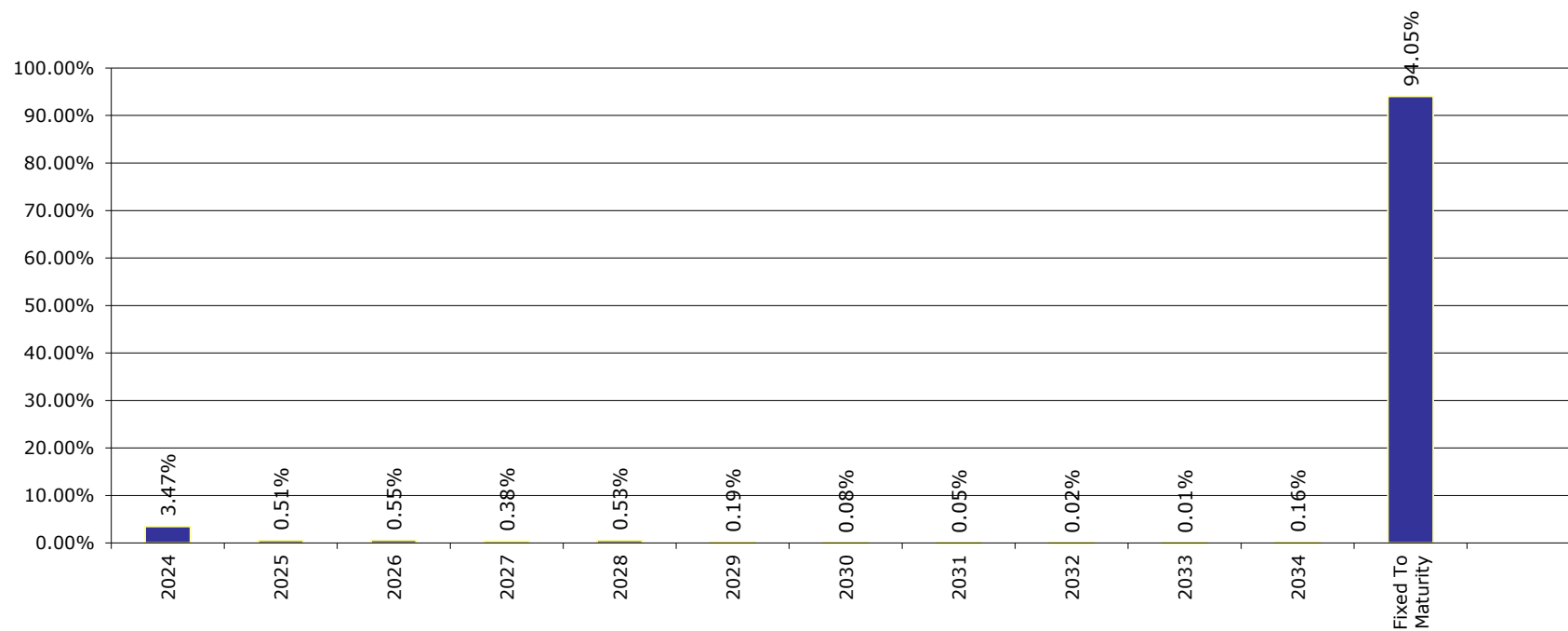
Interest Rate Type



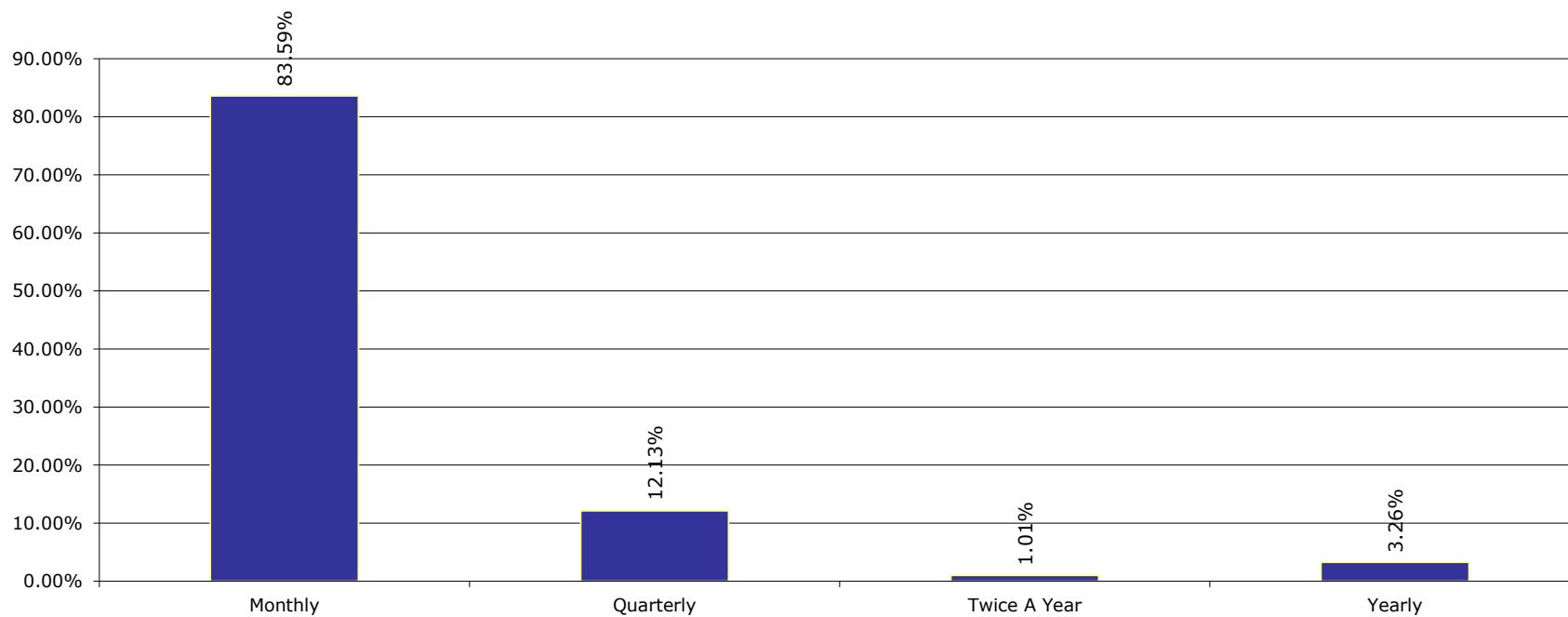
Portfolio Report:
Reporting month as of ultimo:

Esmee Master Issuer
March 2024

Next Reset Date



Int. Payment Frequency



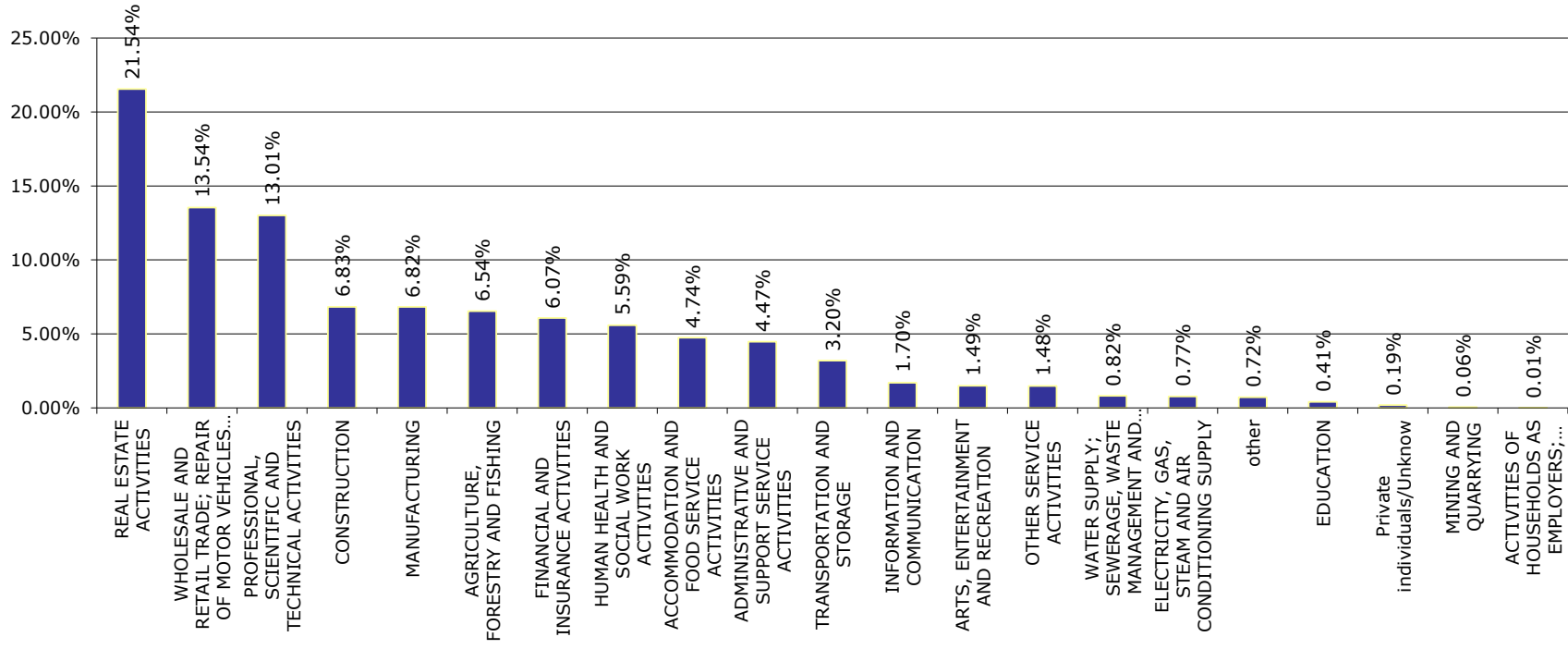
Portfolio Report:

Reporting month as of ultimo:

Esmee Master Issuer

March 2024

Sectors (Nace rev.2)



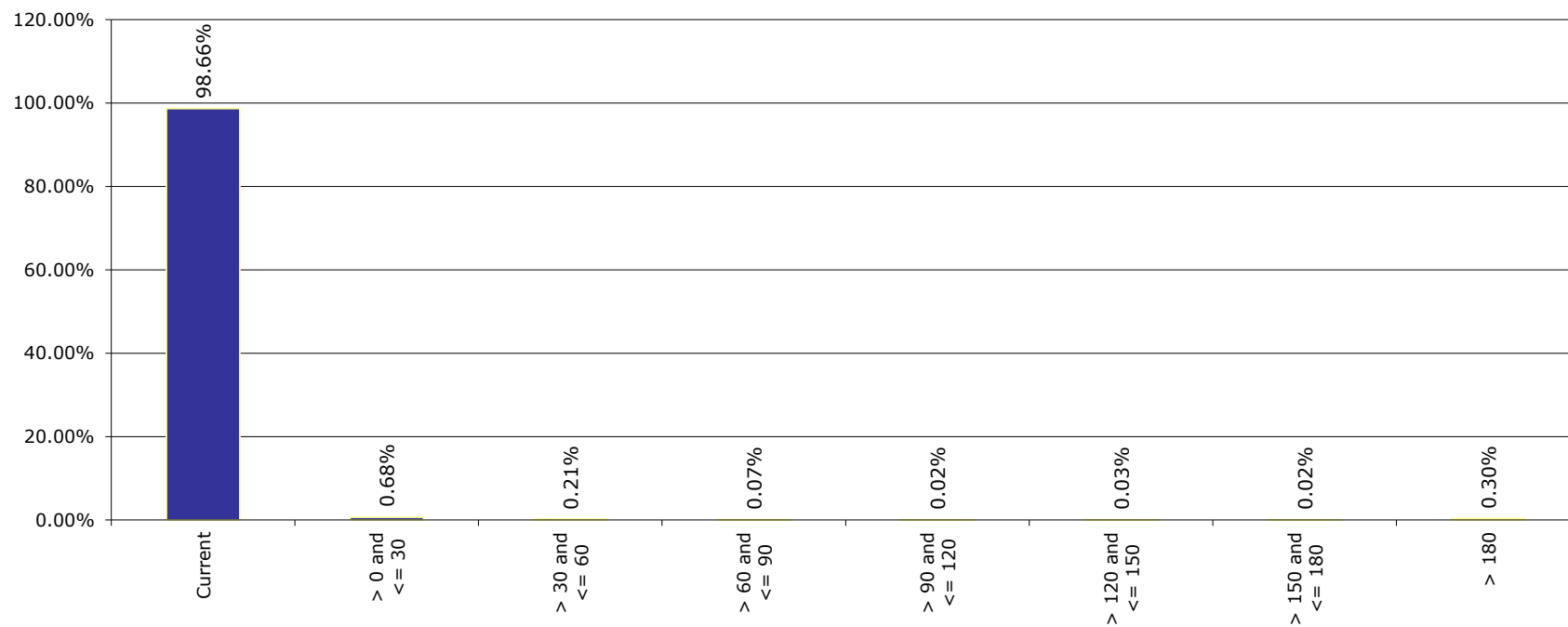
Portfolio Report:

Reporting month as of ultimo:

Esmee Master Issuer

March 2024

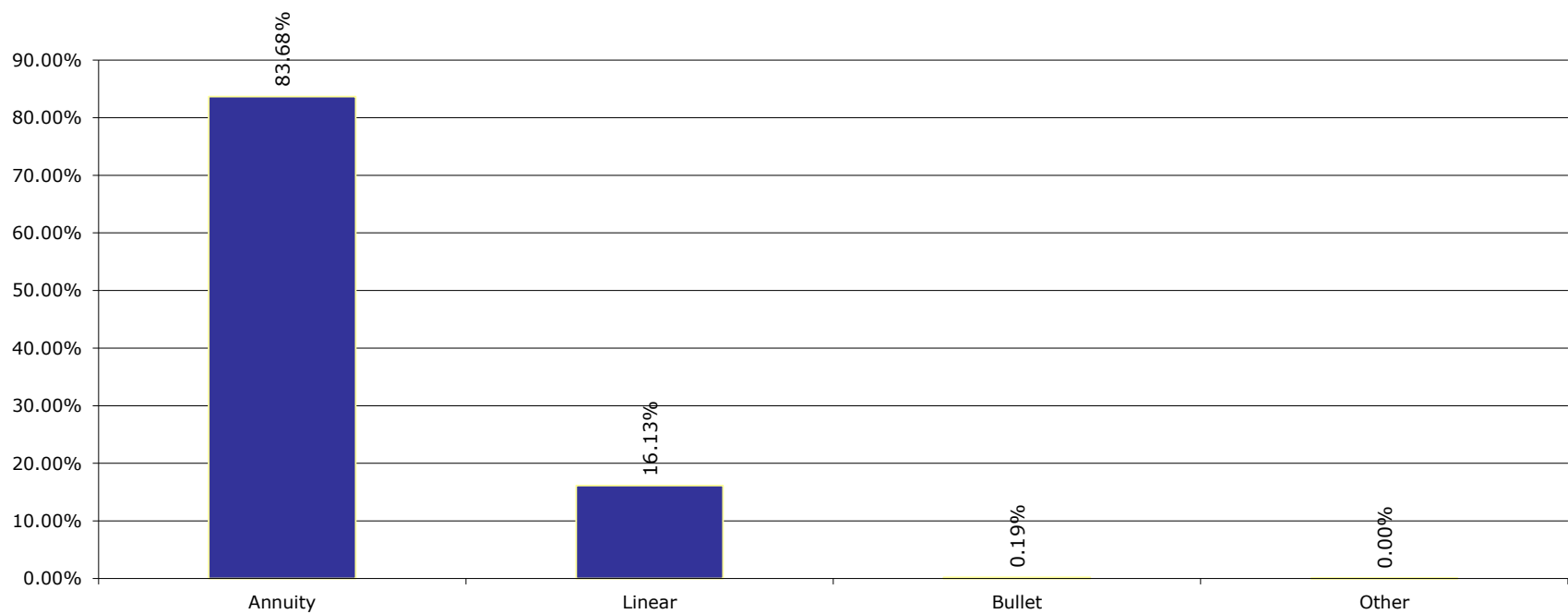
Arrears



Portfolio Report:
Reporting month as of ultimo:

Esmee Master Issuer
March 2024

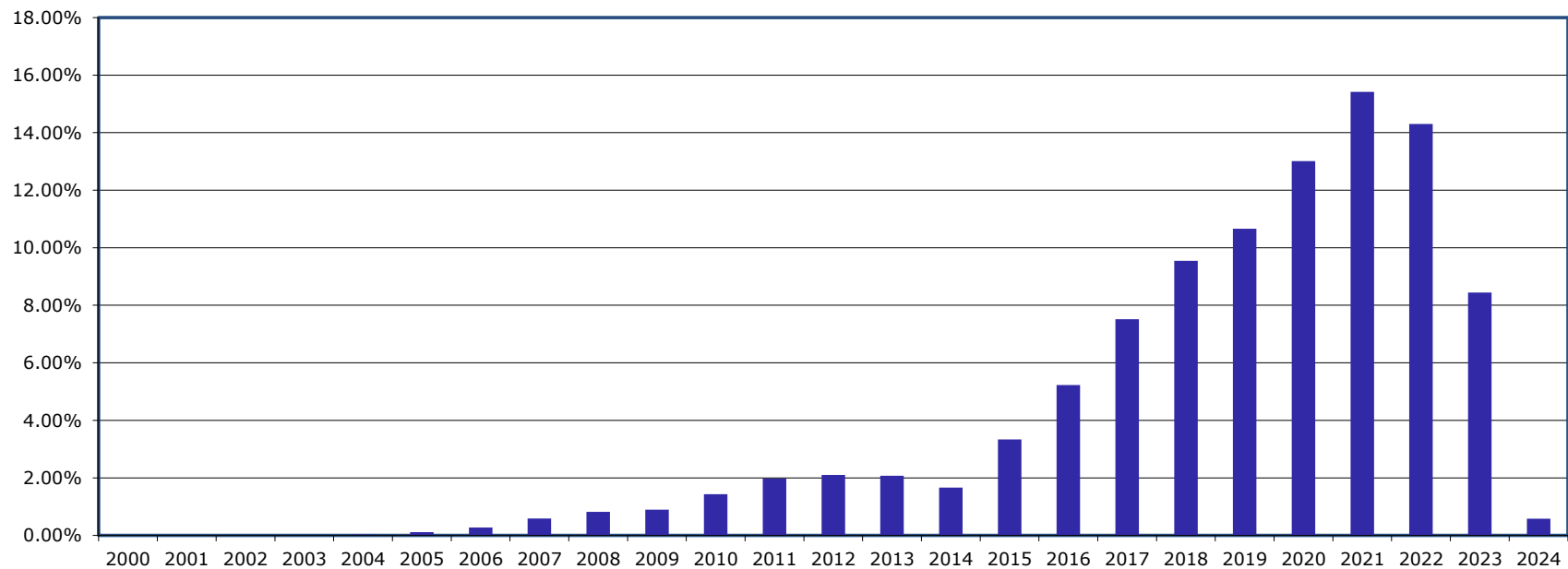
Redemption Type



Portfolio Report:
Reporting month as of ultimo:

Esmee Master Issuer
March 2024

Origination Year



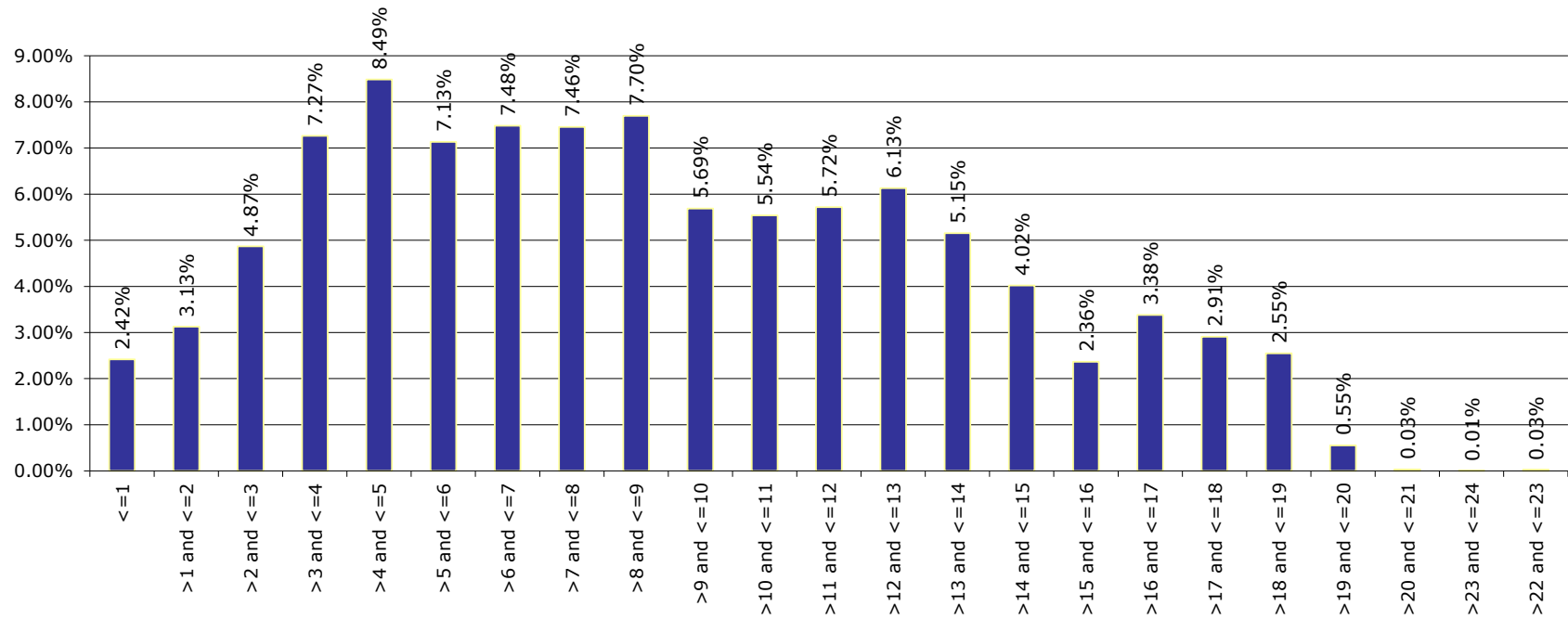
Portfolio Report:

Reporting month as of ultimo:

Esmee Master Issuer

March 2024

Remaining Maturity



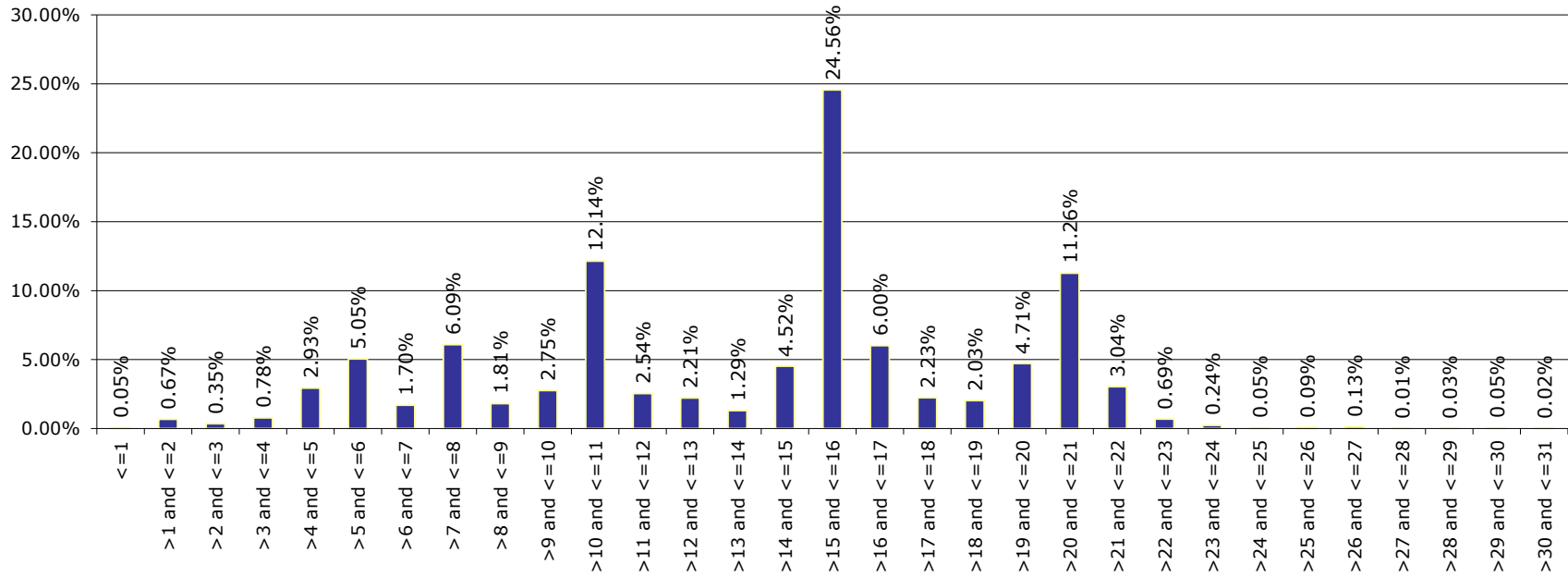
Portfolio Report:

Reporting month as of ultimo:

Esmee Master Issuer

March 2024

Original Maturity



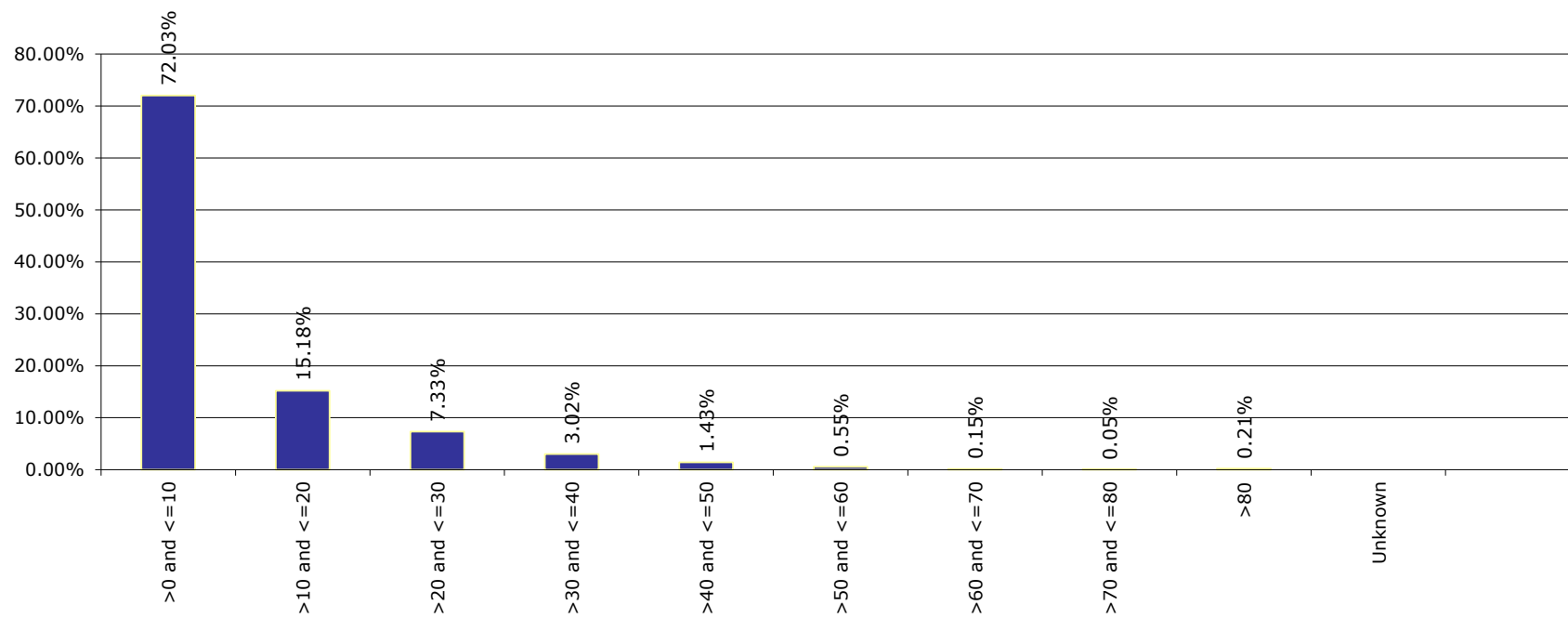
Portfolio Report:

Reporting month as of ultimo:

Esmee Master Issuer

March 2024

LGD



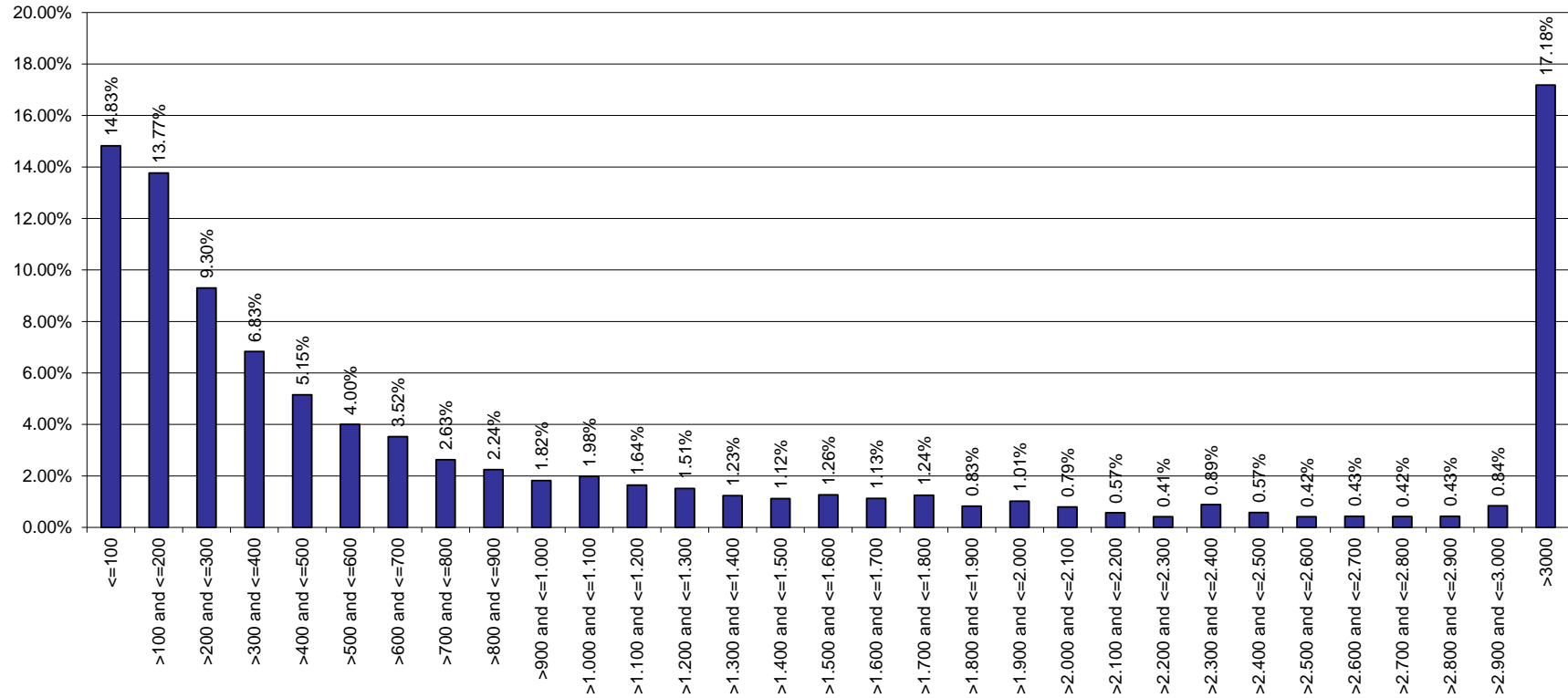
Portfolio Report:

Reporting month as of ultimo:

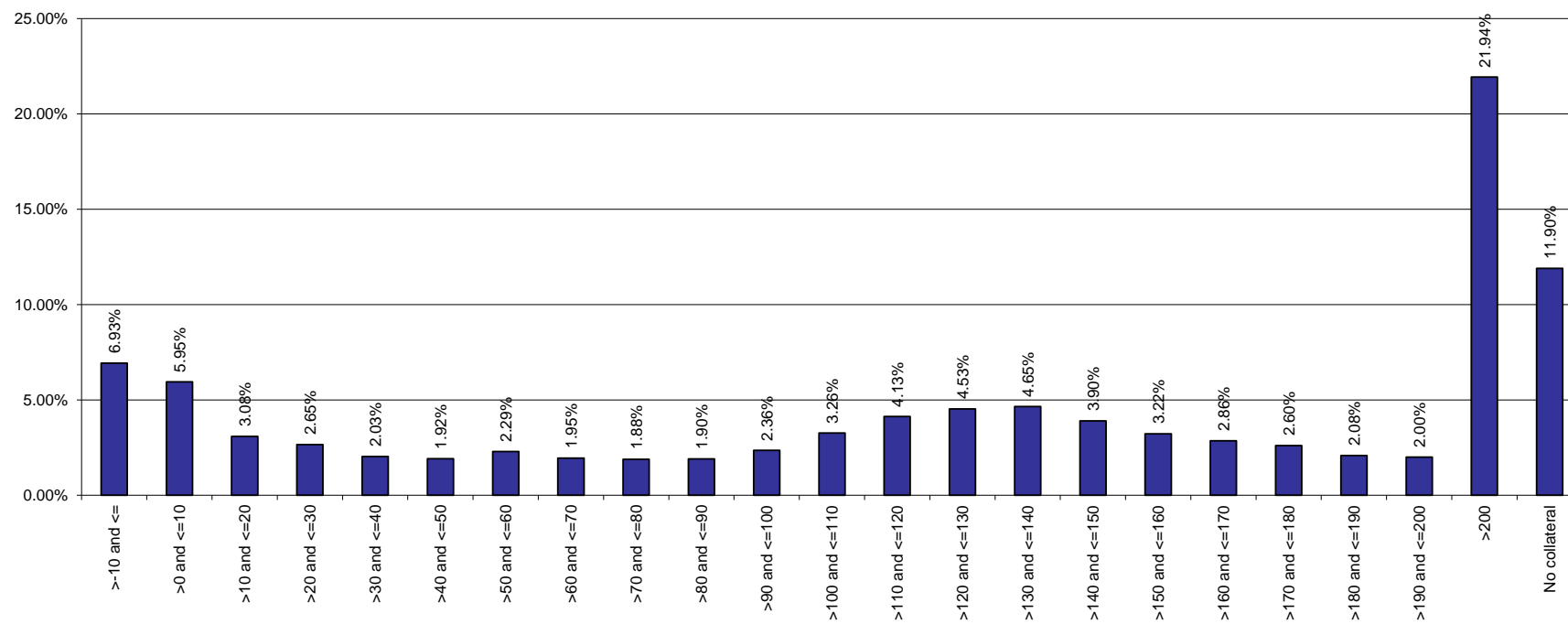
Esmee Master Issuer

March 2024

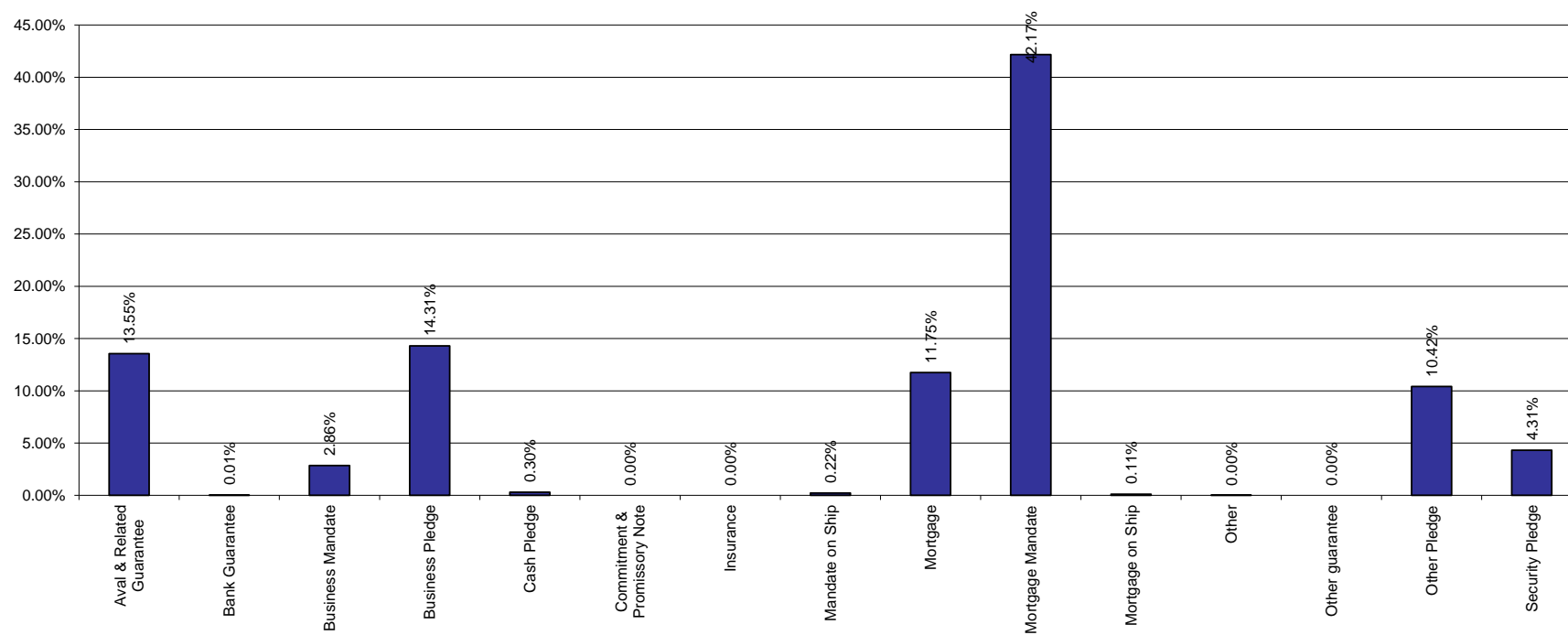
Size of Loans



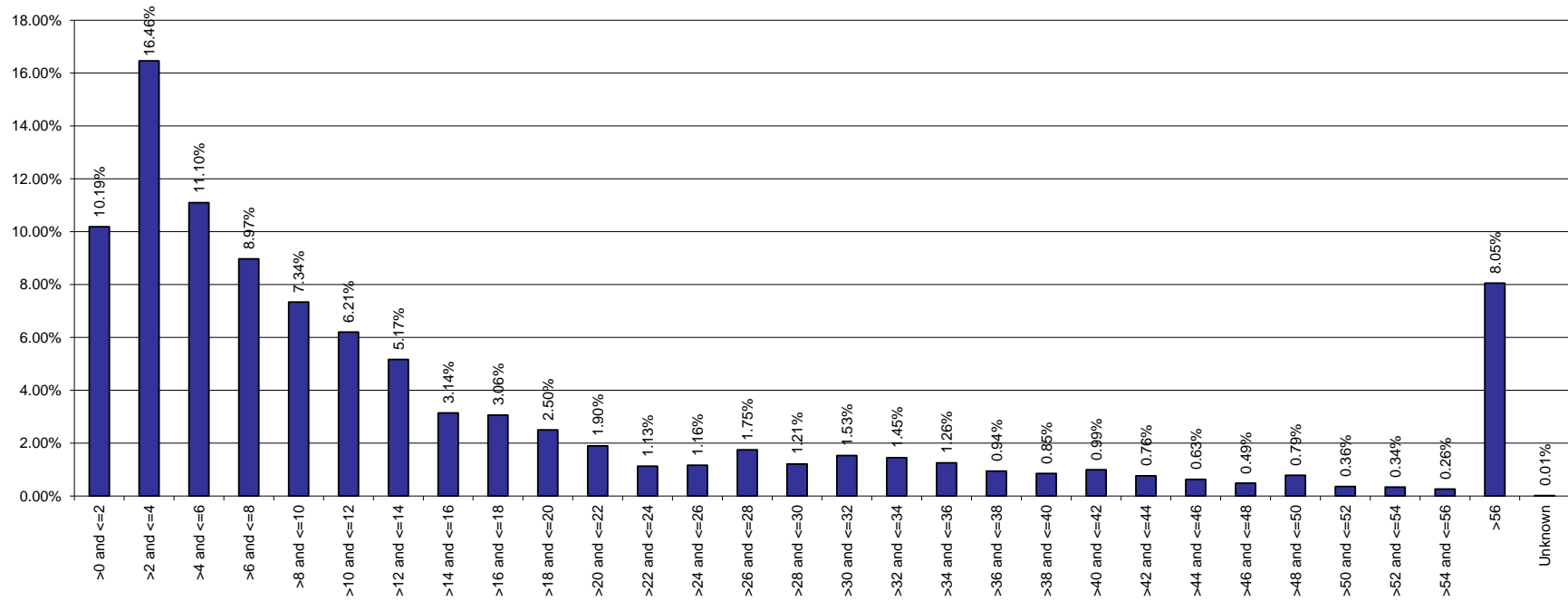
Collateral Ratio



Collaterals



Yearly Expected Loss



Esmee Master Issuer

Pool Characteristics

Portfolio as of: 31-03-2024

1. Key characteristics

Outstanding Principal Balance	9,835,436,622
Nb Loans	78,265
Nb Clients	45,810
Avg Loan Size	125,668
Avg Client Size	214,701
WA PD (%)	3.11%
WA LGD (%)	10.84%
Weighted Average Interest Rate (%)	2.37%
WA Seasoning (Y)	4.98
WA Rem Maturity (Y)	8.77
WA WAL (Y)	4.75
Yearly Exp Loss (%) (WAPD*WALGD)	0.34%
Exp Loss (%) (WAPD*WALGD*AvgLife)	1.60%
WA Tot Collateral Ratio	417.35%

Esmee Master Issuer

Pool Characteristics

Portfolio as of: 31-03-2024

2. Business Unit

Business Unit	Outstanding Principal	No. of Loans	%
Commercial Banking	6,939,796,798	40,600	51.88%
Retail Banking Belgium	2,172,925,326	35,764	45.70%
Private Banking - Fortis	478,304,804	1,779	2.27%
Investment Banking	178,149,068	85	0.11%
Corporate & Public Banking	66,260,626	37	0.05%
Total	9,835,436,622	78,265	100%

Esmee Master Issuer

Pool Characteristics

Portfolio as of: 31-03-2024

3. Products

Products	Outstanding Principal	%	No. of Loans	%
Investment Credit	9,087,194,654	92.39%	42,244	53.98%
Instalment Credit	687,243,441	6.99%	33,809	43.20%
Social & Fiscal Instalment	60,998,527	0.62%	2,212	2.83%
Total	9,835,436,622	100%	78,265	100%

Esmee Master Issuer

Pool Characteristics

Portfolio as of: 31-03-2024

4. Market Segment

Market Segment	Outstanding Principal	%	No. of Loans	%
Medium-Sized Enterprise (MEC)	5,488,948,448	55.81%	22,224	28.40%
missing	1,825,487,277	18.56%	24,951	31.88%
Small Enterprise (IPS)	1,555,765,920	15.82%	21,926	28.02%
Private Banking (PRB)	291,145,082	2.96%	374	0.48%
Corporate (MEC)	243,962,067	2.48%	118	0.15%
Professional (IPS)	237,245,485	2.41%	6,882	8.79%
Small Enterprise Personal Banking (IPS)	160,627,017	1.63%	1,039	1.33%
Professional Personal Banking (IPS)	27,891,127	0.28%	399	0.51%
Individual (IPS)	4,364,201	0.04%	352	0.45%
Total	9,835,436,622	100%	78,265	100%

Esmee Master Issuer

Pool Characteristics

Portfolio as of: 31-03-2024

5. Internal Rating

Internal Rating	Outstanding Principal	%	No. of Loans	%
01.00	68,056,292	0.69%	1,191	1.52%
01.20	11,169,381	1.72%	2,704	3.45%
02.00	169,024,706	3.04%	4,499	5.75%
02.20	6,165,931	0.01%	2	0.00%
03.00	299,211,623	0.00%	3	0.00%
03.20	1,072,272	6.73%	7,139	9.12%
03.30	220,962	0.11%	5	0.01%
04.00	662,257,713	10.28%	9,280	11.86%
04.30	10,773,445	10.00%	7,986	10.20%
05.00	1,010,755,891	9.20%	7,140	9.12%
06.00	983,671,954	12.26%	7,151	9.14%
07.00	904,593,839	10.74%	6,569	8.39%
08.00	1,205,877,247	9.18%	4,357	5.57%
09.00	1,056,317,628	7.92%	3,897	4.98%
10.00	902,998,190	5.02%	3,453	4.41%
11.00	778,498,141	5.15%	3,613	4.62%
12.00	494,149,955	2.19%	1,650	2.11%
13.00	506,539,504	1.69%	1,062	1.36%
14.00	215,050,989	1.05%	873	1.12%
15.00	166,136,219	1.74%	1,520	1.94%
16.00	103,453,571	0.02%	76	0.10%
17.00	170,652,502	0.38%	3,409	4.36%
18.00	2,026,493	0.69%	441	0.56%
19.00	68,329,240	0.11%	7	0.01%
20.00	37,053,336	0.06%	1	0.00%
	1,379,597	0.01%	237	0.30%
Total	9,835,436,622	100%	78,265	100%

Esmee Master Issuer

Pool Characteristics

Portfolio as of: 31-03-2024

6. Top 20 Clients

Top 20 Clients	Outstanding Principal	%	Internal Rating
1	35,607,731	0.36%	08.00
2	30,931,818	0.31%	08.00
3	27,512,500	0.28%	04.00
4	27,453,947	0.28%	15.00
5	27,178,333	0.28%	10.00
6	25,470,000	0.26%	09.00
7	25,395,818	0.26%	08.00
8	25,371,149	0.26%	10.00
9	25,250,000	0.26%	10.00
10	25,212,000	0.26%	08.00
11	24,934,910	0.25%	12.00
12	24,650,000	0.25%	08.00
13	23,782,666	0.24%	10.00
14	22,200,000	0.23%	11.00
15	20,967,273	0.21%	11.00
16	20,903,208	0.21%	09.00
17	20,371,475	0.21%	05.00
18	19,126,943	0.19%	06.00
19	19,116,441	0.19%	12.00
20	18,953,835	0.19%	09.00
Total	490,390,047	5%	

Esmee Master Issuer

Pool Characteristics

Portfolio as of: 31-03-2024

7. Client Province

Client Province	Outstanding Principal	%	No. of Loans	%
West-Vlaanderen	1,782,244,471	18.12%	12,827	16.39%
Antwerpen	1,756,423,679	17.86%	12,890	16.47%
Oost-Vlaanderen	1,478,293,955	15.03%	11,723	14.98%
Brussels	1,086,284,956	11.04%	5,200	6.64%
Vlaams-Brabant	866,340,866	8.81%	7,142	9.13%
Hainaut	674,904,299	6.86%	6,815	8.71%
Limburg	673,764,160	6.85%	6,396	8.17%
Liège	597,391,894	6.07%	6,184	7.90%
Brabant Wallon	382,009,739	3.88%	3,174	4.06%
Namur	326,097,552	3.32%	3,599	4.60%
Luxembourg	211,673,251	2.15%	2,311	2.95%
Other	7,800	0.00%	4	0.01%
Total	9,835,436,622	100%	78,265	100%

Esmee Master Issuer

Pool Characteristics

Portfolio as of: 31-03-2024

8. Interest Rate

Interest Rate	Outstanding Principal	%	No. of Loans	%
<=3%	7,162,444,943	72.82%	50,396	64.39%
>3% and <=4%	1,036,378,586	10.54%	8,563	10.94%
>4% and <=5%	1,264,308,503	12.85%	13,877	17.73%
>5% and <=6%	343,516,641	3.49%	4,676	5.97%
>6% and <=7%	24,619,433	0.25%	587	0.75%
>7% and <=8%	3,454,787	0.04%	104	0.13%
>8% and <=9%	313,635	0.00%	35	0.04%
>9% and <=10%	395,157	0.00%	14	0.02%
>10%	4,935	0.00%	13	0.02%
Total	9,835,436,622	100%	78,265	100%

Esmee Master Issuer

Pool Characteristics

Portfolio as of: 31-03-2024

9. Interest Rate Type

Ranges (in year)	Outstanding Principal	%	No. of Loans	%
Fixed	9,223,608,958	93.78%	74,607	95.33%
Resettable	611,827,664	6.22%	3,658	4.67%
Total	9,835,436,622	100%	78,265	100%

Esmee Master Issuer

Pool Characteristics

Portfolio as of: 31-03-2024

10. Next Reset Date

Next Reset Date	Outstanding Principal	%	No. of Loans	%
2024	340,947,749	3.47%	1,909	2.44%
2025	50,387,635	0.51%	413	0.53%
2026	54,530,588	0.55%	268	0.34%
2027	37,070,356	0.38%	176	0.22%
2028	52,532,084	0.53%	180	0.23%
2029	18,467,882	0.19%	80	0.10%
2030	8,163,436	0.08%	22	0.03%
2031	5,384,434	0.05%	24	0.03%
2032	1,744,910	0.02%	6	0.01%
2033	943,001	0.01%	2	0.00%
2034	15,269,423	0.16%	3	0.00%
Fixed To Maturity	9,249,995,126	94.05%	75,182	96.06%
Total	9,835,436,622	100%	78,265	100%

Esmee Master Issuer

Pool Characteristics

Portfolio as of: 31-03-2024

11. Int. Payment Frequency

Int. Payment Freq.	Outstanding Principal	%	No. of Loans	%
Monthly	8,221,658,579	83.59%	74,191	94.79%
Quarterly	1,193,354,232	12.13%	1,285	1.64%
Twice A Year	99,768,307	1.01%	420	0.54%
Yearly	320,655,504	3.26%	2,369	3.03%
Total	9,835,436,622	100%	78,265	100%

Esmee Master Issuer

Pool Characteristics

Portfolio as of: 31-03-2024

12. Sectors (Nace rev.2)

Sectors (Nave rev.2)	Outstanding Principal	%	No. of Loans	%
REAL ESTATE ACTIVITIES	2,118,912,434	21.54%	6,317	8.07%
WHOLESALE AND RETAIL TRADE; REPAIR OF MOTOR VEHICLES AND MOTOR VEHICLES	1331482072	13.54%	13,908	17.77%
PROFESSIONAL, SCIENTIFIC AND TECHNICAL ACTIVITIES	1,279,197,541	13.01%	9,252	11.82%
CONSTRUCTION	671,378,320	6.83%	8,127	10.38%
MANUFACTURING	670,959,620	6.82%	5,439	6.95%
AGRICULTURE, FORESTRY AND FISHING	643,210,898	6.54%	6,886	8.80%
FINANCIAL AND INSURANCE ACTIVITIES	597,227,667	6.07%	2,796	3.57%
HUMAN HEALTH AND SOCIAL WORK ACTIVITIES	549,604,410	5.59%	5,608	7.17%
ACCOMMODATION AND FOOD SERVICE ACTIVITIES	466,684,177	4.74%	5,395	6.89%
ADMINISTRATIVE AND SUPPORT SERVICE ACTIVITIES	440,057,771	4.47%	4,729	6.04%
TRANSPORTATION AND STORAGE	314,596,378	3.20%	2,365	3.02%
INFORMATION AND COMMUNICATION	167,613,118	1.70%	1,922	2.46%
ARTS, ENTERTAINMENT AND RECREATION	146,894,322	1.49%	1,448	1.85%
OTHER SERVICE ACTIVITIES	145,131,496	1.48%	2,173	2.78%
WATER SUPPLY; SEWERAGE, WASTE MANAGEMENT AND REMEDIATION ACTIVITIES	80,738,560	0.82%	203	0.26%
ELECTRICITY, GAS, STEAM AND AIR CONDITIONING SUPPLY	75,672,715	0.77%	104	0.13%
other	70,734,361	0.72%	559	0.71%
EDUCATION	40,127,682	0.41%	443	0.57%
Private individuals/Unknow	18,978,740	0.19%	542	0.69%
MINING AND QUARRYING	5,464,198	0.06%	39	0.05%
ACTIVITIES OF HOUSEHOLDS AS EMPLOYERS; UNDIFFERENTIATED GOODS AND SERVICES	770,144	0.01%	10	0.01%
Total	9,835,436,622	100%	78,265	100%

Esmee Master Issuer

Pool Characteristics

Portfolio as of: 31-03-2024

13. Sectors (Nace rev.2-2 Digits)

Sector name	Outstanding Principal	%	No. of Loans	%
Real estate activities	2,118,912,434	21.54%	6,317	8.07%
Activities of head offices; management consultancy activities	829,483,661	8.43%	4,177	5.34%
Crop and animal production, hunting and related service activities	628,258,247	6.39%	6,707	8.57%
Retail trade, except of motor vehicles and motorcycles	625,168,703	6.36%	7,421	9.48%
Financial service activities, except insurance and pension funding	485,478,249	4.94%	1,588	2.03%
Wholesale trade, except of motor vehicles and motorcycles	476,944,704	4.85%	4,100	5.24%
Human health activities	346,384,325	3.52%	4,894	6.25%
Construction of buildings	332,772,686	3.38%	1,926	2.46%
Specialised construction activities	314,983,863	3.20%	5,981	7.64%
Food and beverage service activities	296,557,788	3.02%	4,706	6.01%
Legal and accounting activities	232,961,020	2.37%	2,069	2.64%
Wholesale and retail trade and repair of motor vehicles and motorcycles	229,368,664	2.33%	2,387	3.05%
Office administrative, office support and other business support activities	185,040,579	1.88%	1,380	1.76%
Manufacture of food products	181,481,379	1.85%	1,365	1.74%
Warehousing and support activities for transportation	179,392,646	1.82%	362	0.46%
Accommodation	170,126,389	1.73%	689	0.88%
Manufacture of fabricated metal products, except machinery and equipment	162,886,239	1.66%	1,431	1.83%
Services to buildings and landscape activities	132,061,117	1.34%	2,287	2.92%
Residential care activities	127,275,198	1.29%	345	0.44%
Land transport and transport via pipelines	116,431,190	1.18%	1,716	2.19%
Activities auxiliary to financial services and insurance activities	110,326,888	1.12%	1,187	1.52%
Computer programming, consultancy and related activities	108,206,072	1.10%	1,332	1.70%
Rental and leasing activities	103,914,402	1.06%	788	1.01%
Sports activities and amusement and recreation activities	103,703,550	1.05%	961	1.23%
Architectural and engineering activities; technical testing and analysis	100,177,031	1.02%	1,518	1.94%
Other personal service activities	88,152,601	0.90%	1,780	2.27%
Social work activities without accommodation	75,944,887	0.77%	369	0.47%
Electricity, gas, steam and air conditioning supply	75,672,715	0.77%	104	0.13%
other	70,734,361	0.72%	559	0.71%
Waste collection, treatment and disposal activities; materials recovery	49,093,314	0.50%	135	0.17%
Advertising and market research	48,907,747	0.50%	520	0.66%
Activities of membership organisations	41,632,478	0.42%	132	0.17%
Manufacture of other non-metallic mineral products	41,392,285	0.42%	215	0.27%
Education	40,127,682	0.41%	443	0.57%
Manufacture of furniture	36,691,200	0.37%	321	0.41%
Creative, arts and entertainment activities	35,947,030	0.37%	442	0.56%
Manufacture of beverages	34,652,169	0.35%	105	0.13%
Other professional, scientific and technical activities	26,016,472	0.26%	515	0.66%
Repair and installation of machinery and equipment	25,805,964	0.26%	411	0.53%
Manufacture of machinery and equipment n.e.c.	24,710,705	0.25%	286	0.37%
Civil engineering	23,621,772	0.24%	220	0.28%
Veterinary activities	23,306,022	0.24%	391	0.50%
Information service activities	23,180,515	0.24%	215	0.27%
Manufacture of wood and of products of wood and cork, except furniture; manufacture of articles of straw and plaiting materials	22,641,355	0.23%	241	0.31%
Manufacture of rubber and plastic products	20,340,874	0.21%	112	0.14%
Sewerage	20,127,606	0.20%	48	0.06%
Manufacture of chemicals and chemical products	19,570,438	0.20%	77	0.10%
Activities of extraterritorial organisations and bodies/Unknown	18,978,740	0.19%	542	0.69%
Scientific research and development	18,345,589	0.19%	62	0.08%
Printing and reproduction of recorded media	18,263,327	0.19%	241	0.31%
Telecommunications	17,827,043	0.18%	57	0.07%
Repair of computers and personal and household goods	15,346,417	0.16%	261	0.33%
Other manufacturing	14,867,324	0.15%	187	0.24%
Water transport	13,720,947	0.14%	62	0.08%
Manufacture of wearing apparel	13,396,074	0.14%	53	0.07%

Esmee Master Issuer

Pool Characteristics

Portfolio as of: 31-03-2024

13. Sectors (Nace rev.2-2 Digits)

Sector name	Outstanding Principal	%	No. of Loans	%
Motion picture, video and television programme production, sound recording and music publishing activities	12,884,504	0.13%	230	0.29%
Manufacture of textiles	11,983,586	0.12%	115	0.15%
Manufacture of electrical equipment	11,909,527	0.12%	83	0.11%
Employment activities	9770335.62	0.10%	117	0.15%
Manufacture of computer, electronic and optical products	9,200,058	0.09%	45	0.06%
Remediation activities and other waste management services	8,538,390	0.09%	15	0.02%
Fishing and aquaculture	7,745,541	0.08%	7	0.01%
Forestry and logging	7,207,110	0.07%	172	0.22%
Libraries, archives, museums and other cultural activities	7,130,535	0.07%	33	0.04%
Travel agency, tour operator and other reservation service and related activities	6,693,849	0.07%	114	0.15%
Manufacture of motor vehicles, trailers and semi-trailers	6,066,710	0.06%	42	0.05%
Other mining and quarrying	5,464,198	0.06%	39	0.05%
Manufacture of paper and paper products	5,190,414	0.05%	39	0.05%
Publishing activities	4,977,758	0.05%	78	0.10%
Manufacture of basic metals	4,714,664	0.05%	28	0.04%
Manufacture of basic pharmaceutical products and pharmaceutical preparations	4,404,652	0.04%	22	0.03%
Postal and courier activities	4,393,994	0.04%	206	0.26%
Water collection, treatment and supply	2,979,250	0.03%	5	0.01%
Security and investigation activities	2,577,490	0.03%	43	0.05%
Insurance, reinsurance and pension funding, except compulsory social security	1,422,530	0.01%	21	0.03%
Manufacture of other transport equipment	777,085	0.01%	16	0.02%
Activities of households as employers of domestic personnel	770,144	0.01%	10	0.01%
Air transport	657,601	0.01%	19	0.02%
Programming and broadcasting activities	537,225	0.01%	10	0.01%
Gambling and betting activities	113,206	0.00%	12	0.02%
Manufacture of leather and related products	13,590	0.00%	4	0.01%
Total	9,835,436,622	100.00%	78,265	100.00%

Esmee Master Issuer

Pool Characteristics

Portfolio as of: 31-03-2024

14. Arrears

Arrears	Outstanding Principal	%	No. of Loans	%
Current	9,704,033,009	98.66%	74,227	94.84%
> 0 and <= 30	66,781,890	0.68%	843	1.08%
> 30 and <= 60	20,797,827	0.21%	182	0.23%
> 60 and <= 90	6,594,435	0.07%	81	0.10%
> 90 and <= 120	2,399,808	0.02%	28	0.04%
> 120 and <= 150	3,181,265	0.03%	27	0.03%
> 150 and <= 180	2,286,968	0.02%	32	0.04%
> 180	29,361,419	0.30%	2,845	3.64%
Total	9,835,436,622	100%	78,265	100%

Esmee Master Issuer

Pool Characteristics

Portfolio as of: 31-03-2024

15. Redemption Type

Redemption Type	Outstanding Principal	No. of Loans	%
Annuity	6,593,898,269	65,491	83.68%
Linear	2,980,648,772	12,626	16.13%
Bullet	258,399,582	145	0.19%
Other	2,490,000	3	0.00%
Total	9,835,436,622	78,265	100%

Esmee Master Issuer

Pool Characteristics

Portfolio as of: 31-03-2024

16. Origination Year

Origination Year	Outstanding Principal	%	No. of Loans	%
2000	122,888	0.00%	6	0.01%
2001	44,556	0.00%	8	0.01%
2002	129,966	0.00%	10	0.01%
2003	470,910	0.00%	81	0.10%
2004	2,930,309	0.03%	184	0.24%
2005	11,343,554	0.12%	302	0.39%
2006	26,919,388	0.27%	441	0.56%
2007	57,720,252	0.59%	816	1.04%
2008	80,209,938	0.82%	1,185	1.51%
2009	87,731,699	0.89%	1,600	2.04%
2010	140,833,616	1.43%	2,053	2.62%
2011	194,266,089	1.98%	2,181	2.79%
2012	206,794,586	2.10%	1,883	2.41%
2013	203,925,316	2.07%	1,806	2.31%
2014	163,394,268	1.66%	1,896	2.42%
2015	328,269,977	3.34%	2,669	3.41%
2016	513,838,907	5.22%	3,192	4.08%
2017	738,920,923	7.51%	4,199	5.37%
2018	938,527,678	9.54%	5,136	6.56%
2019	1,048,567,320	10.66%	8,932	11.41%
2020	1,279,977,947	13.01%	9,595	12.26%
2021	1,516,399,957	15.42%	11,232	14.35%
2022	1,406,784,624	14.30%	9,910	12.66%
2023	830,449,489	8%	8,547	11%
2024	56,862,465	1%	401	1%
Total	9,835,436,622	100%	78,265	100%

Esmee Master Issuer

Pool Characteristics

Portfolio as of: 31-03-2024

17. Remaining Maturity (years)

Remaining Maturity (years)	Outstanding Principal	%	No. of Loans	%
<=1	237,796,176	2.42%	19,257	24.60%
>1 and <=2	307,432,989	3.13%	11,271	14.40%
>2 and <=3	478,810,478	4.87%	9,405	12.02%
>3 and <=4	714,557,348	7.27%	7,940	10.15%
>4 and <=5	834,673,722	8.49%	6,459	8.25%
>5 and <=6	701,685,646	7.13%	3,898	4.98%
>6 and <=7	736,138,761	7.48%	3,629	4.64%
>7 and <=8	733,238,171	7.46%	3,223	4.12%
>8 and <=9	757,054,676	7.70%	2,773	3.54%
>9 and <=10	559,419,204	5.69%	1,834	2.34%
>10 and <=11	544,786,296	5.54%	1,431	1.83%
>11 and <=12	562,359,850	5.72%	1,371	1.75%
>12 and <=13	602,784,590	6.13%	1,440	1.84%
>13 and <=14	506,886,919	5.15%	1,269	1.62%
>14 and <=15	395,413,790	4.02%	850	1.09%
>15 and <=16	232,474,225	2.36%	546	0.70%
>16 and <=17	332,337,536	3.38%	603	0.77%
>17 and <=18	286,033,788	2.91%	566	0.72%
>18 and <=19	250,526,322	2.55%	391	0.50%
>19 and <=20	54,555,691	0.55%	100	0.13%
>20 and <=21	3,007,753	0.03%	6	0.01%
>23 and <=24	720,350	0.01%	2	0.00%
>22 and <=23	2,742,341	0.03%	1	0.00%
Total	9,835,436,622	100%	78,265	100%

Esmee Master Issuer

Pool Characteristics

Portfolio as of: 31-03-2024

18. Original Maturity (years)

Original Maturity (years)	Outstanding Principal	%	No. of Loans	%
<=1	5,236,148	0.05%	437	0.56%
>1 and <=2	65,864,724	0.67%	2,838	3.63%
>2 and <=3	34,422,612	0.35%	1,805	2.31%
>3 and <=4	76,475,698	0.78%	5,189	6.63%
>4 and <=5	288,226,288	2.93%	10,312	13.18%
>5 and <=6	496,930,724	5.05%	14,778	18.88%
>6 and <=7	166,780,934	1.70%	1,489	1.90%
>7 and <=8	598,611,020	6.09%	4,386	5.60%
>8 and <=9	177,942,293	1.81%	1,212	1.55%
>9 and <=10	270,420,477	2.75%	2,185	2.79%
>10 and <=11	1,194,038,352	12.14%	7,528	9.62%
>11 and <=12	249,585,619	2.54%	1,113	1.42%
>12 and <=13	217,633,049	2.21%	787	1.01%
>13 and <=14	127,346,397	1.29%	498	0.64%
>14 and <=15	444,346,370	4.52%	2,124	2.71%
>15 and <=16	2,415,286,878	24.56%	10,908	13.94%
>16 and <=17	590,504,722	6.00%	1,889	2.41%
>17 and <=18	218,931,040	2.23%	547	0.70%
>18 and <=19	199,230,913	2.03%	544	0.70%
>19 and <=20	463,381,765	4.71%	1,846	2.36%
>20 and <=21	1,107,521,527	11.26%	4,798	6.13%
>21 and <=22	298,620,585	3.04%	789	1.01%
>22 and <=23	67,864,797	0.69%	109	0.14%
>23 and <=24	23,294,029	0.24%	20	0.03%
>24 and <=25	4,532,111	0.05%	21	0.03%
>25 and <=26	9,102,844	0.09%	70	0.09%
>26 and <=27	12,541,464	0.13%	21	0.03%
>27 and <=28	1,352,435	0.01%	4	0.01%
>28 and <=29	2,872,937	0.03%	2	0.00%
>29 and <=30	4,436,814	0.05%	8	0.01%
>30 and <=31	2,101,056	0.02%	8	0.01%
Total	9,835,436,622	100%	78,265	100%

Esmee Master Issuer

Pool Characteristics

Portfolio as of: 31-03-2024

19. LGD

LGD Range (%)	Outstanding Principal	%	No. of Loans	%
<=0	4,510,161	0.05%	2	0.00%
>0 and <=10	7,084,017,409	72.03%	41,036	52.43%
>10 and <=20	1,493,065,420	15.18%	8,862	11.32%
>20 and <=30	721,175,408	7.33%	8,217	10.50%
>30 and <=40	296,958,200	3.02%	7,601	9.71%
>40 and <=50	140,670,993	1.43%	4,902	6.26%
>50 and <=60	54,306,062	0.55%	3,513	4.49%
>60 and <=70	15,124,633	0.15%	838	1.07%
>70 and <=80	5,091,921	0.05%	303	0.39%
>80	20,516,414	0.21%	2,767	3.54%
Unknown			224	0.29%
TOTAL	9,835,436,622	100.00%	78,265	100.00%

Esmee Master Issuer

Pool Characteristics

Portfolio as of: 31-03-2024

20. Size of Loans

Range (eur 1000)	Outstanding Principal	%	No. of Loans	%
<=100	1,458,177,605	14.83%	58,458	74.69%
>100 and <=200	1,354,271,459	13.77%	9,521	12.17%
>200 and <=300	914,584,280	9.30%	3,754	4.80%
>300 and <=400	671,669,472	6.83%	1,945	2.49%
>400 and <=500	506,388,442	5.15%	1,130	1.44%
>500 and <=600	393,424,850	4.00%	720	0.92%
>600 and <=700	346,349,388	3.52%	535	0.68%
>700 and <=800	258,483,513	2.63%	345	0.44%
>800 and <=900	220,551,850	2.24%	260	0.33%
>900 and <=1.000	178,993,751	1.82%	188	0.24%
>1.000 and <=1.100	194,501,025	1.98%	184	0.24%
>1.100 and <=1.200	161,248,361	1.64%	140	0.18%
>1.200 and <=1.300	148,866,149	1.51%	119	0.15%
>1.300 and <=1.400	121,241,980	1.23%	90	0.11%
>1.400 and <=1.500	110,181,948	1.12%	76	0.10%
>1.500 and <=1.600	124,095,284	1.26%	80	0.10%
>1.600 and <=1.700	110,665,655	1.13%	67	0.09%
>1.700 and <=1.800	122,440,390	1.24%	70	0.09%
>1.800 and <=1.900	81,378,165	0.83%	44	0.06%
>1.900 and <=2.000	99,826,384	1.01%	51	0.07%
>2.000 and <=2.100	77,783,865	0.79%	38	0.05%
>2.100 and <=2.200	55,858,539	0.57%	26	0.03%
>2.200 and <=2.300	40,552,513	0.41%	18	0.02%
>2.300 and <=2.400	87,441,337	0.89%	37	0.05%
>2.400 and <=2.500	56,450,014	0.57%	23	0.03%
>2.500 and <=2.600	41,026,112	0.42%	16	0.02%
>2.600 and <=2.700	42,476,014	0.43%	16	0.02%
>2.700 and <=2.800	41,290,296	0.42%	15	0.02%
>2.800 and <=2.900	42,703,300	0.43%	15	0.02%
>2.900 and <=3.000	82,768,049	0.84%	28	0.04%
>3000	1,689,746,634	17.18%	256	0.33%
Total	9,835,436,622	100%	78,265	100%

Esmee Master Issuer

Pool Characteristics

Portfolio as of: 31-03-2024

21. Collateral Ratio

Range (%)	Outstanding Principal	%	No. of Loans	%
>-10 and <=	681,413,520	6.93%	8,214	10.50%
>0 and <=10	584,814,503	5.95%	984	1.26%
>10 and <=20	303,347,203	3.08%	815	1.04%
>20 and <=30	261,008,072	2.65%	890	1.14%
>30 and <=40	199,329,375	2.03%	892	1.14%
>40 and <=50	188,639,793	1.92%	1,012	1.29%
>50 and <=60	224,910,779	2.29%	964	1.23%
>60 and <=70	191,722,775	1.95%	1,099	1.40%
>70 and <=80	185,280,249	1.88%	1,171	1.50%
>80 and <=90	187,206,041	1.90%	1,226	1.57%
>90 and <=100	232,065,781	2.36%	1,579	2.02%
>100 and <=110	321,026,217	3.26%	1,835	2.34%
>110 and <=120	406,224,827	4.13%	2,268	2.90%
>120 and <=130	445,621,542	4.53%	2,596	3.32%
>130 and <=140	457,125,860	4.65%	2,619	3.35%
>140 and <=150	383,237,960	3.90%	2,306	2.95%
>150 and <=160	317,118,111	3.22%	2,022	2.58%
>160 and <=170	281,240,398	2.86%	1,947	2.49%
>170 and <=180	255,792,017	2.60%	1,868	2.39%
>180 and <=190	204,379,838	2.08%	1,643	2.10%
>190 and <=200	196,427,578	2.00%	1,527	1.95%
>200	2,157,510,781	21.94%	23,460	29.98%
No collateral	1,169,993,404	11.90%	15,328	19.58%
Total	9,835,436,622	100%	78,265	100%

Esmee Master Issuer

Pool Characteristics

Portfolio as of: 31-03-2024

22. Collaterals

Collateral Type	Amount	%
Aval & Related Guarantee	3,130,921,703.50	13.55%
Bank Guarantee	3,239,186.29	0.01%
Business Mandate	659,642,866.61	2.86%
Business Pledge	3,304,574,453.81	14.31%
Cash Pledge	68,184,142.92	0.30%
Commitment & Promissory Note	0.00	0.00%
Insurance	0.00	0.00%
Mandate on Ship	50,079,433.00	0.22%
Mortgage	2,713,055,665.10	11.75%
Mortgage Mandate	9,741,549,067.43	42.17%
Mortgage on Ship	25,988,622.32	0.11%
Other	225,000.00	0.00%
Other guarantee	0.00	0.00%
Other Pledge	2,405,968,648.44	10.42%
Security Pledge	995,485,817.66	4.31%
Total	23,098,914,607.08	100%

Esmee Master Issuer

Pool Characteristics

Portfolio as of: 31-03-2024

23. Yearly Expected Loss

Range (%)	Outstanding Principal	%	No. of Loans	%
>0 and <=2	1,002,200,678	10.19%	7,673	9.80%
>2 and <=4	1,619,388,724	16.46%	11,604	14.83%
>4 and <=6	1,091,462,096	11.10%	8,186	10.46%
>6 and <=8	882,052,867	8.97%	6,153	7.86%
>8 and <=10	721,890,161	7.34%	4,824	6.16%
>10 and <=12	610,414,058	6.21%	3,865	4.94%
>12 and <=14	508,117,807	5.17%	2,909	3.72%
>14 and <=16	309,012,088	3.14%	2,285	2.92%
>16 and <=18	301,135,833	3.06%	2,079	2.66%
>18 and <=20	246,247,434	2.50%	1,767	2.26%
>20 and <=22	186,489,977	1.90%	1,475	1.88%
>22 and <=24	110,990,639	1.13%	1,269	1.62%
>24 and <=26	114,524,662	1.16%	1,158	1.48%
>26 and <=28	172,209,213	1.75%	1,028	1.31%
>28 and <=30	119,397,758	1.21%	912	1.17%
>30 and <=32	150,389,827	1.53%	1,038	1.33%
>32 and <=34	142,843,140	1.45%	1,013	1.29%
>34 and <=36	123,561,189	1.26%	867	1.11%
>36 and <=38	92,396,039	0.94%	757	0.97%
>38 and <=40	83,526,989	0.85%	631	0.81%
>40 and <=42	97,407,249	0.99%	671	0.86%
>42 and <=44	75,084,085	0.76%	552	0.71%
>44 and <=46	61,672,311	0.63%	590	0.75%
>46 and <=48	47,724,458	0.49%	445	0.57%
>48 and <=50	77,448,657	0.79%	501	0.64%
>50 and <=52	35,096,953	0.36%	452	0.58%
>52 and <=54	33,274,071	0.34%	313	0.40%
>54 and <=56	26,031,327	0.26%	334	0.43%
>56	792,066,736	8.05%	12,677	16.20%
Unknown	1,379,597	0.01%	237	0.30%
TOTAL	9,835,436,622.37	100%	78,265.00	100%