

Bass Master Issuer

Report date: 31 March 2011

MORTGAGE PORTFOLIO REPORT

Mortgage Portfolio Report:

Reporting month as of ultimo:

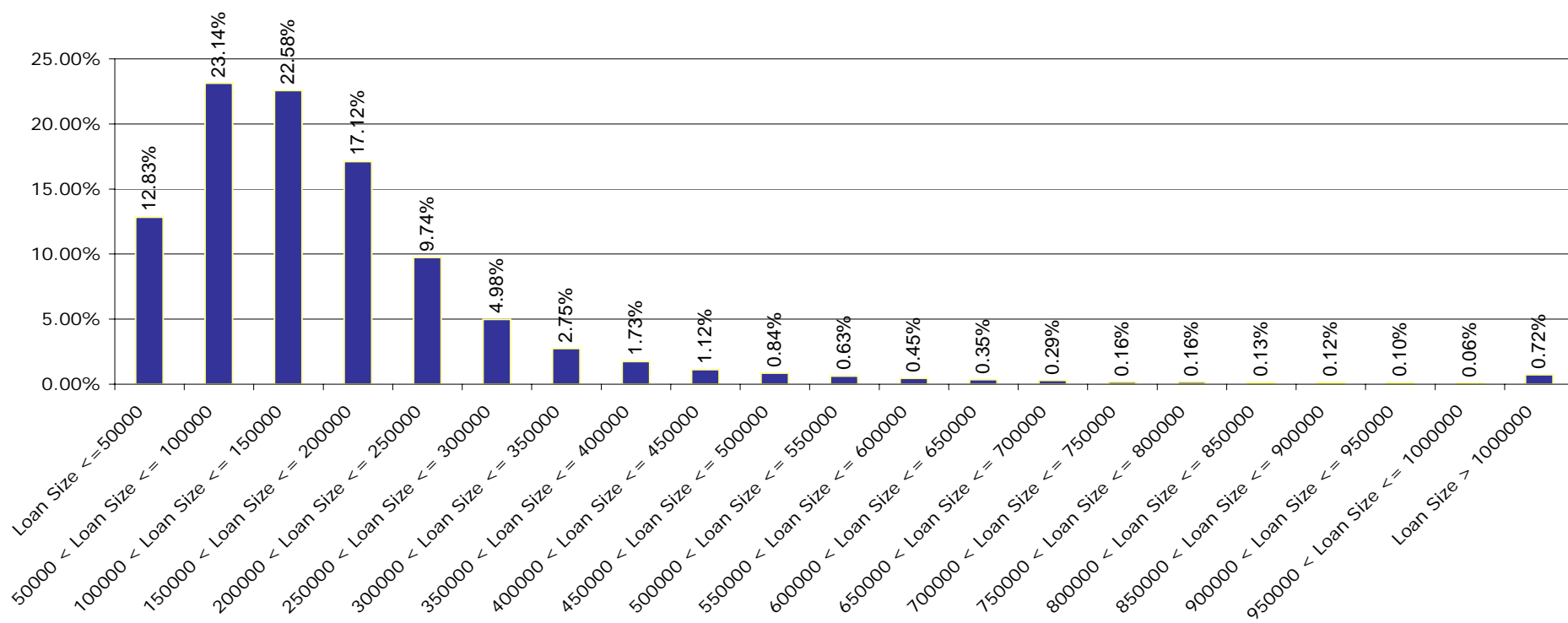
Bass Master Issuer

March 2011

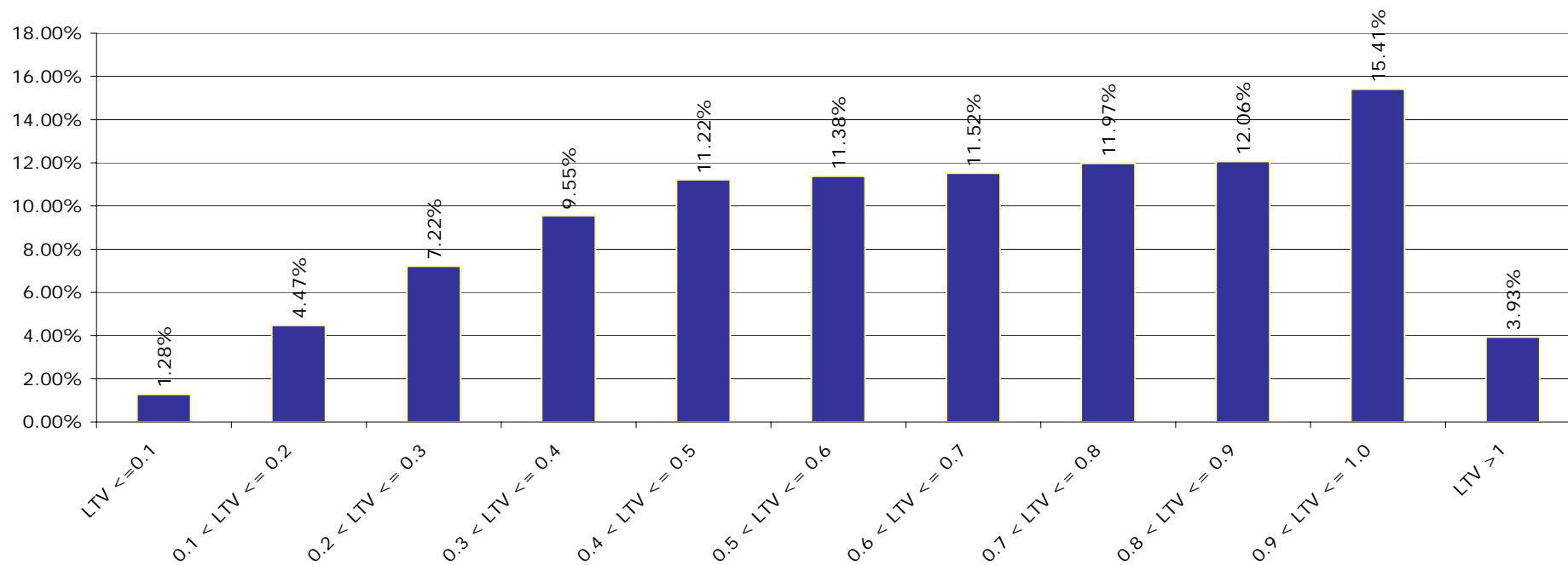
Key Characteristics

Oustanding Principal Balance (EUR)	25,799,681,426
Average Borrower Balance (EUR)	81,866
Maximum Borrower Balance (EUR)	1,966,387
Number of Borrowers	315,147
Number of Advances	481,688
Weighted Average Seasoning (years)	4.3
Weighted Average Remaining Maturity (years)	15.9
Weighted Average Coupon (%)	3.8
Weighted Average DTI	43.2%
Weighted Average LTV	62.8%
Weighted Average Indexed LTV	54.1%
Weighted Mortgage Coverage Ratio	121.0%

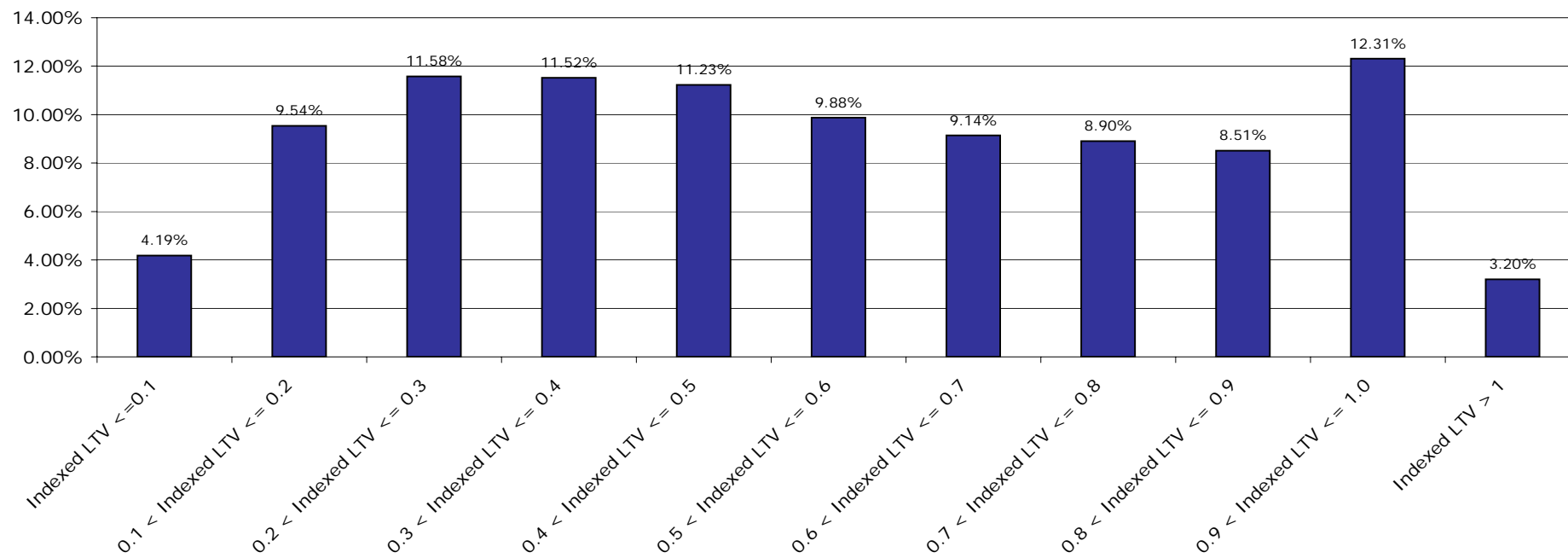
Loan Size



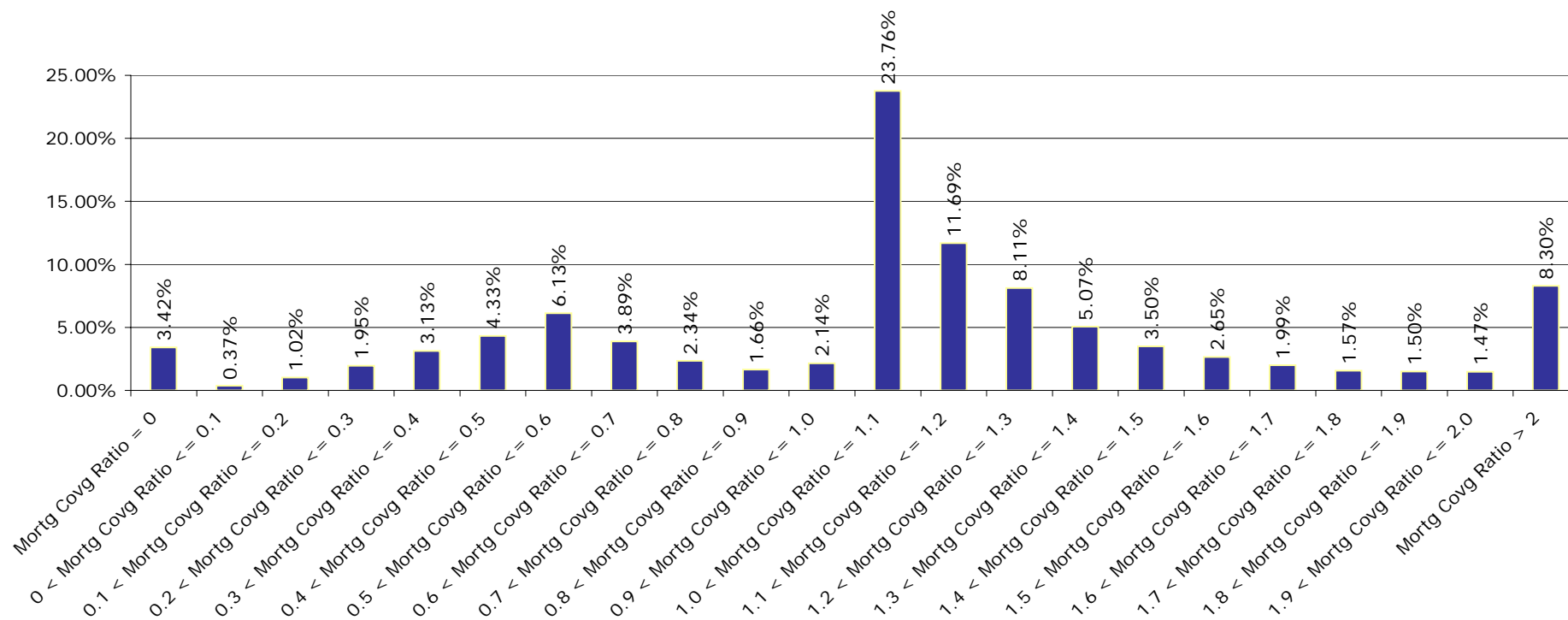
Loan to Value



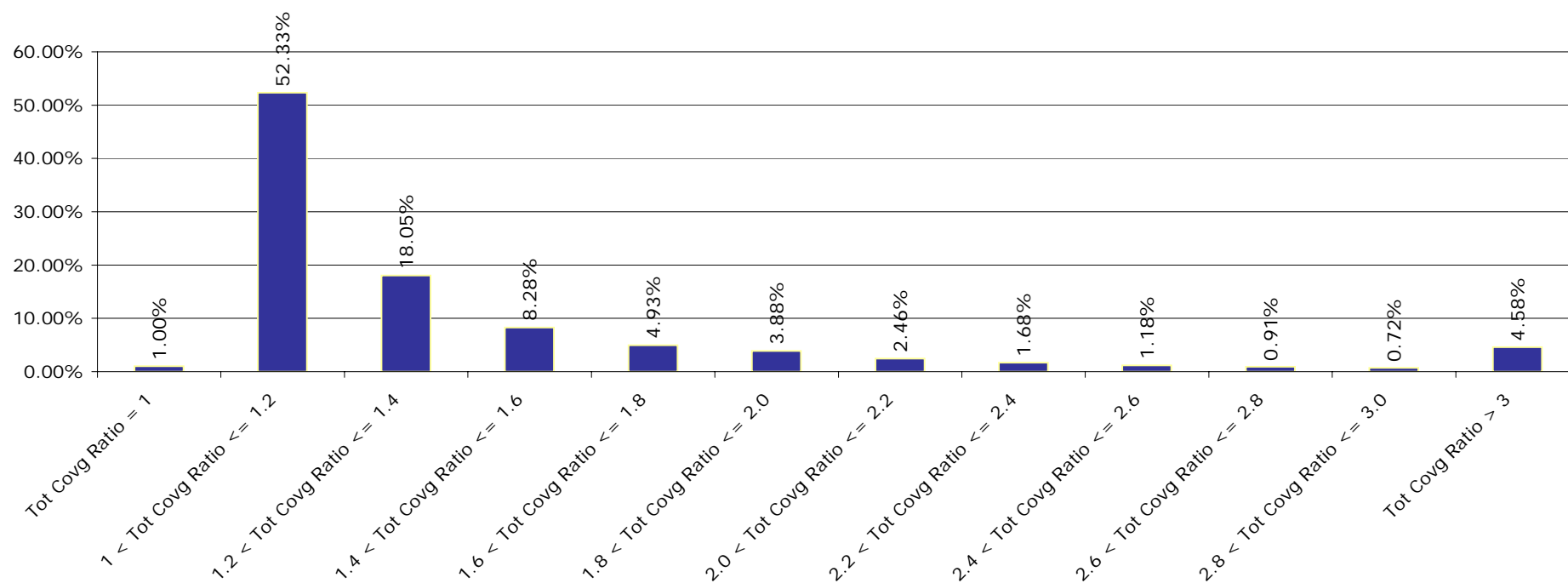
Indexed Loan to Value



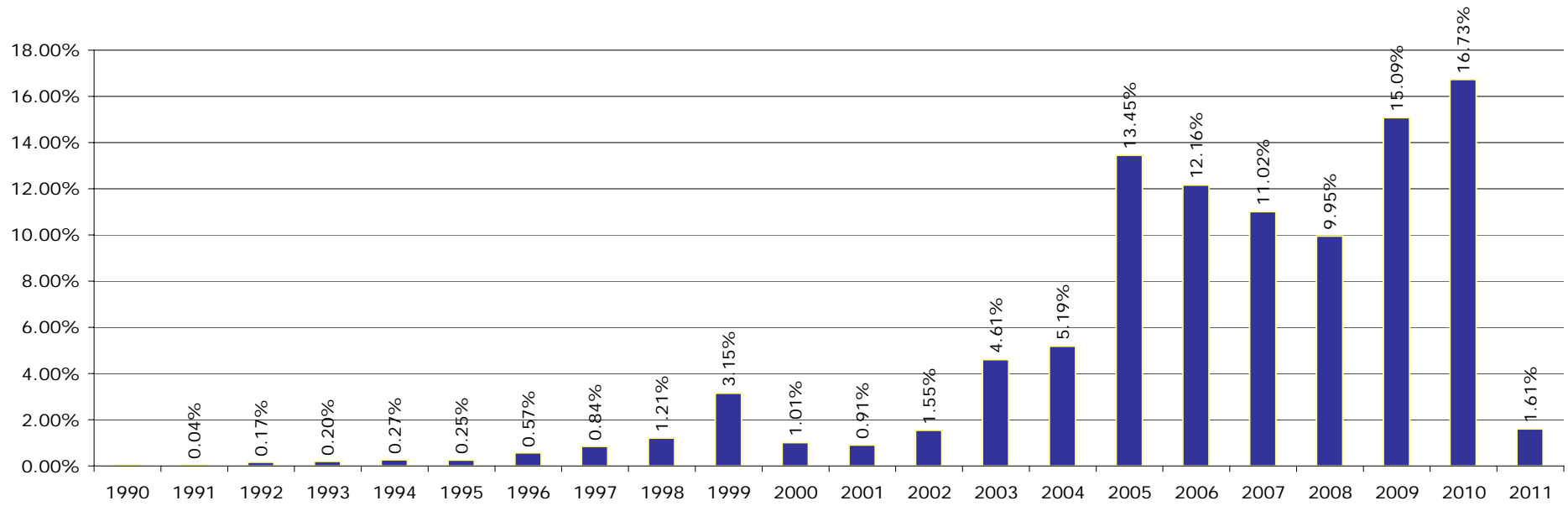
Mortgage Coverage Ratio



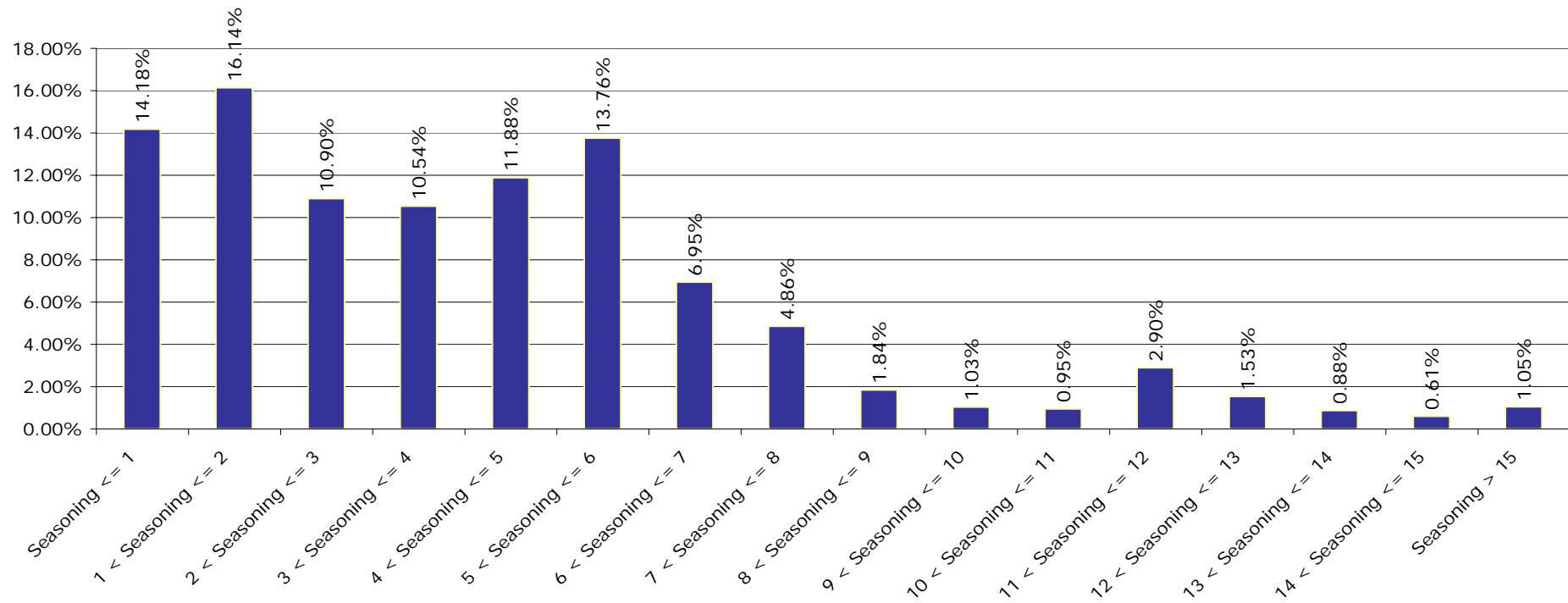
Total Coverage Ratio



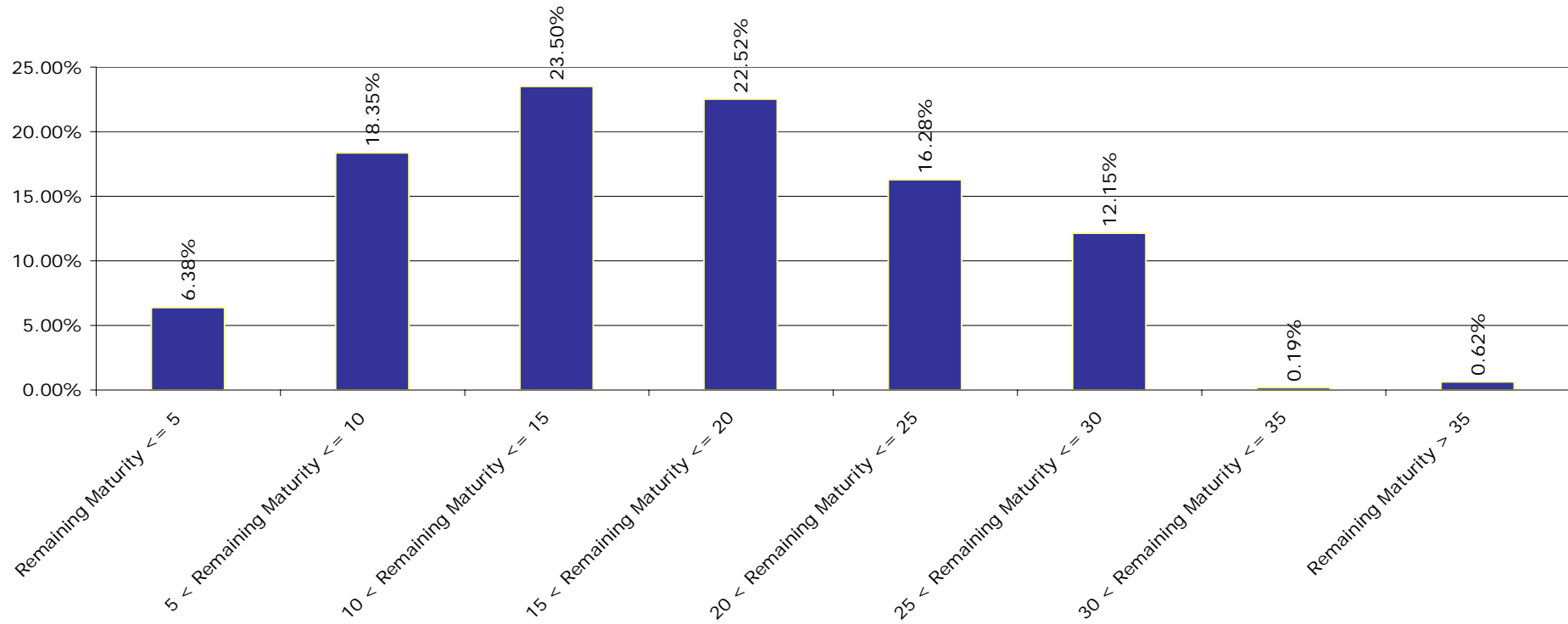
Origination Year



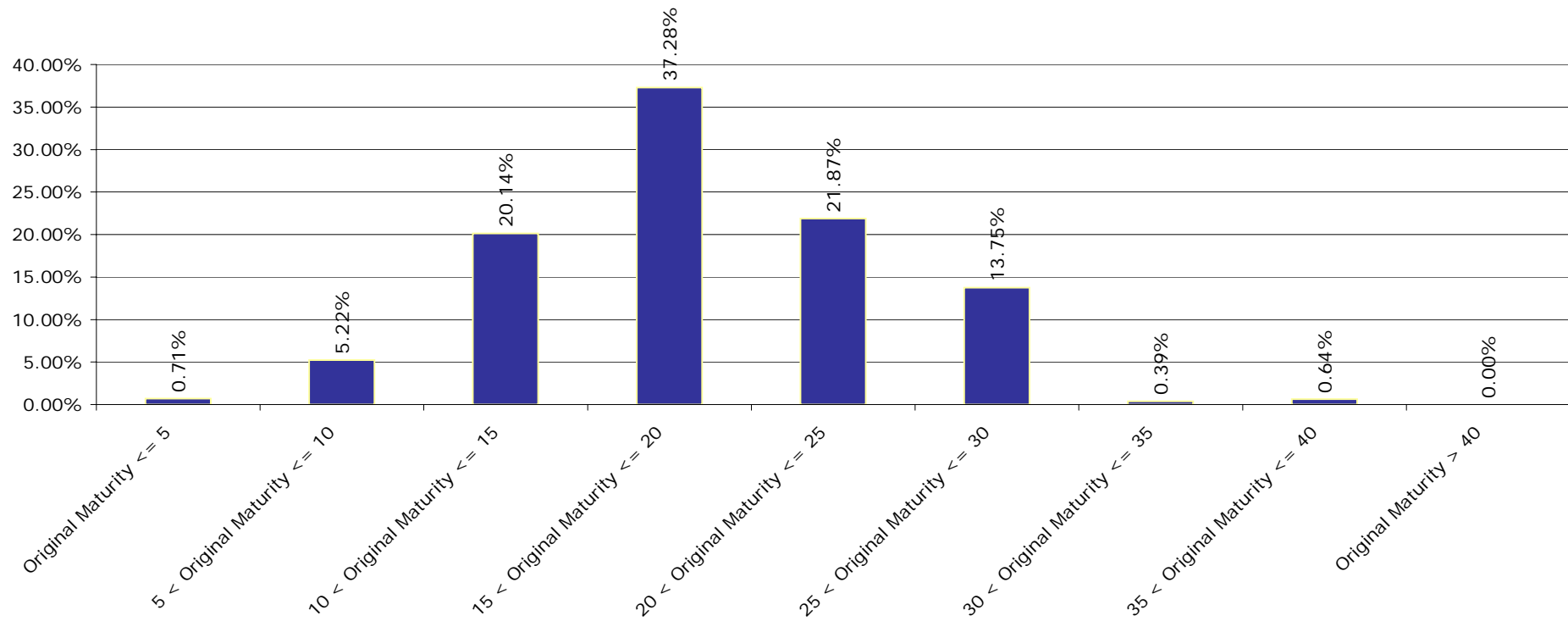
Seasoning



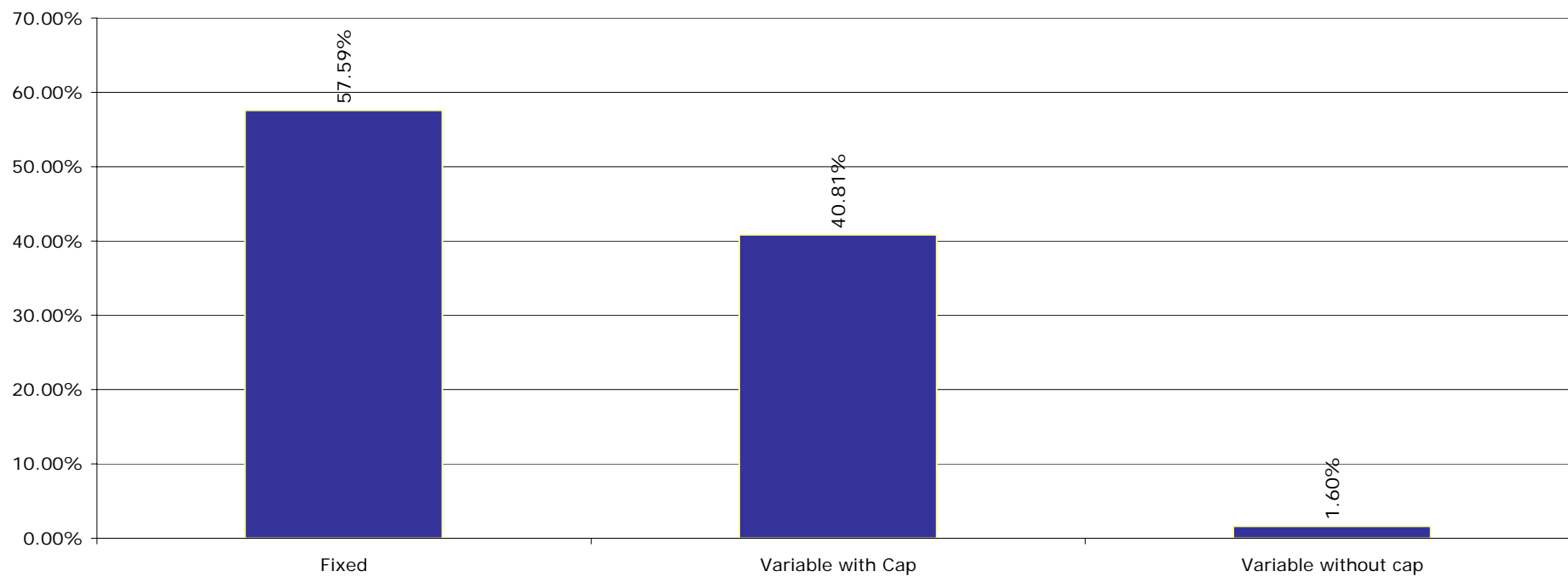
Remaing Maturity



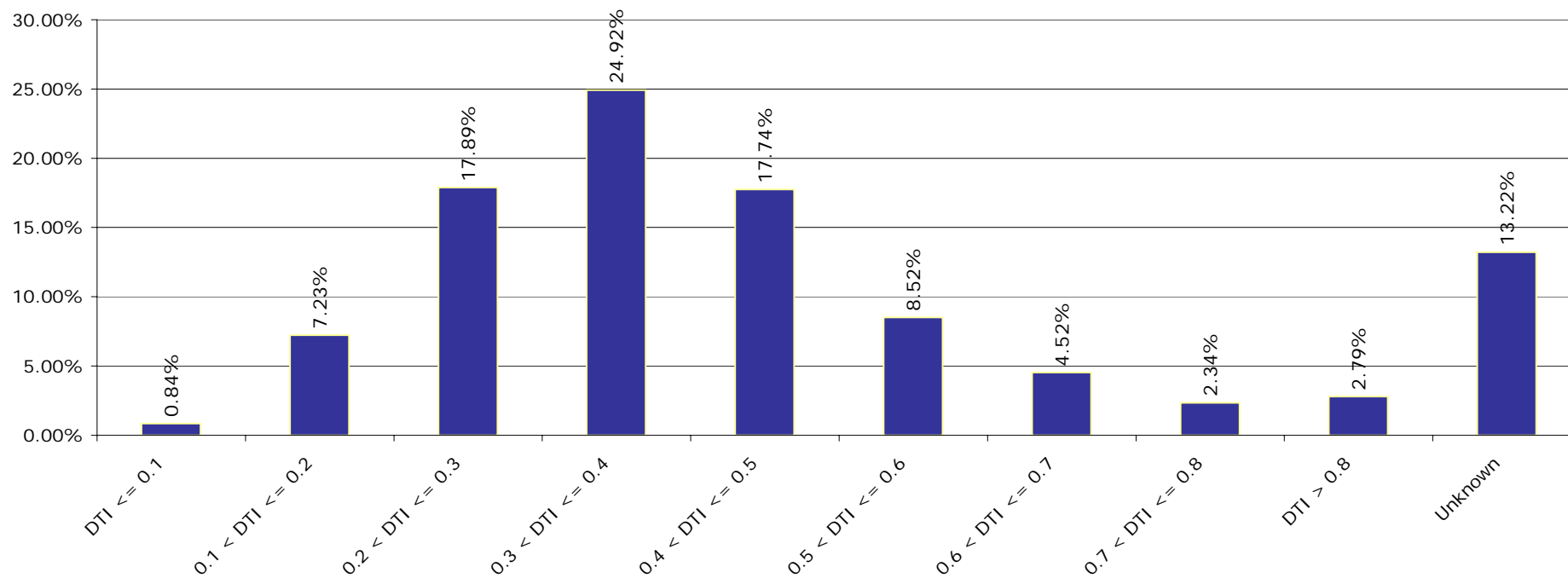
Original Maturity



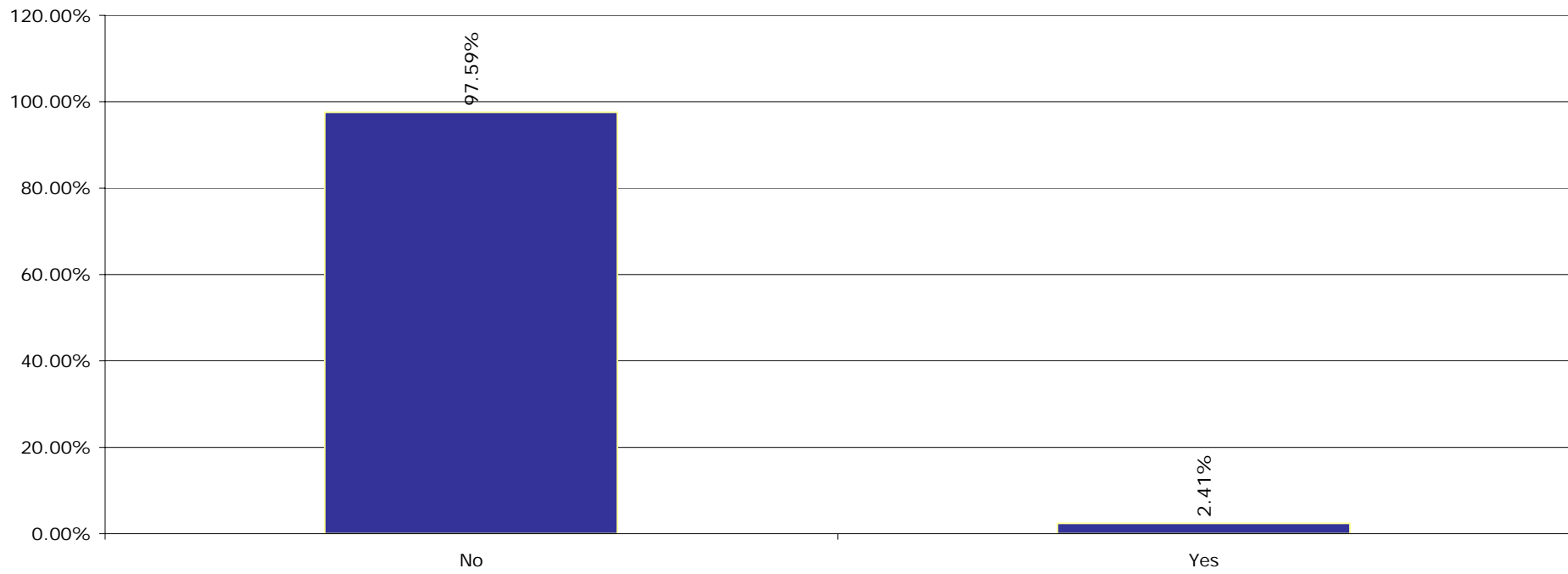
Interest Type



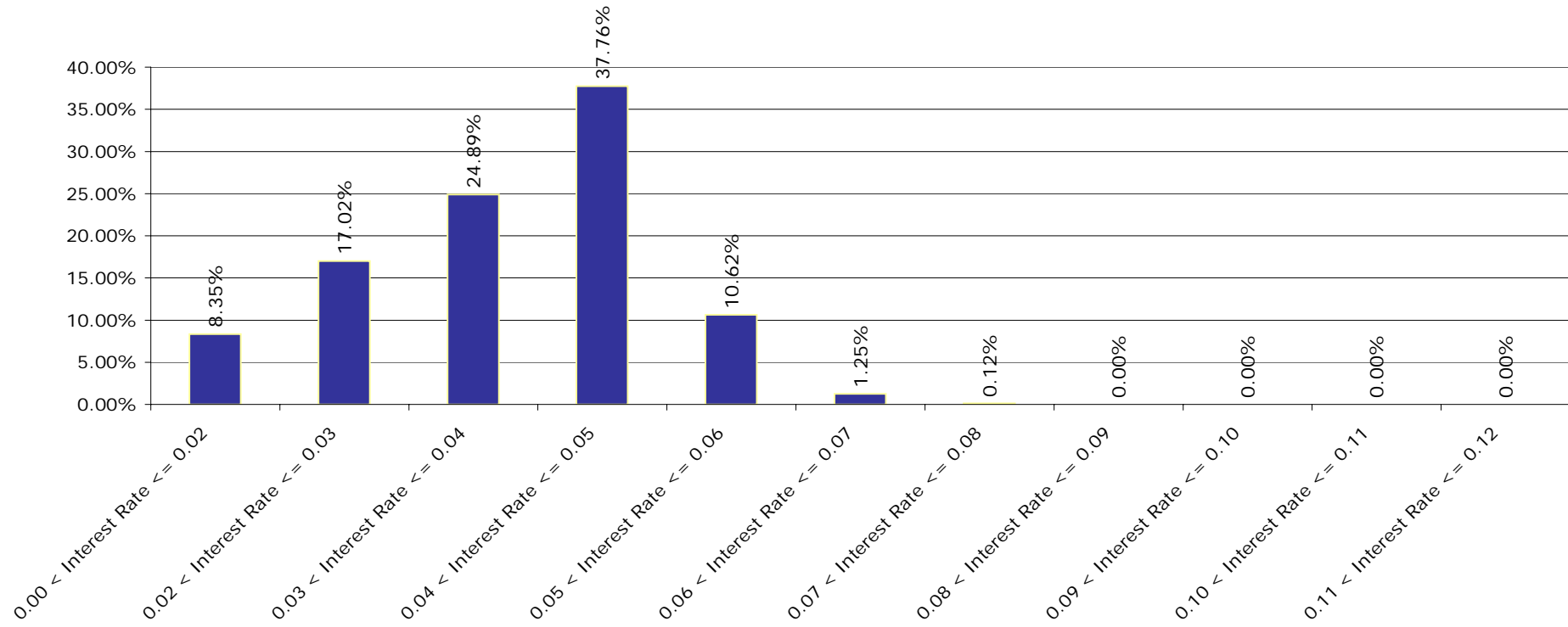
Debt to Income



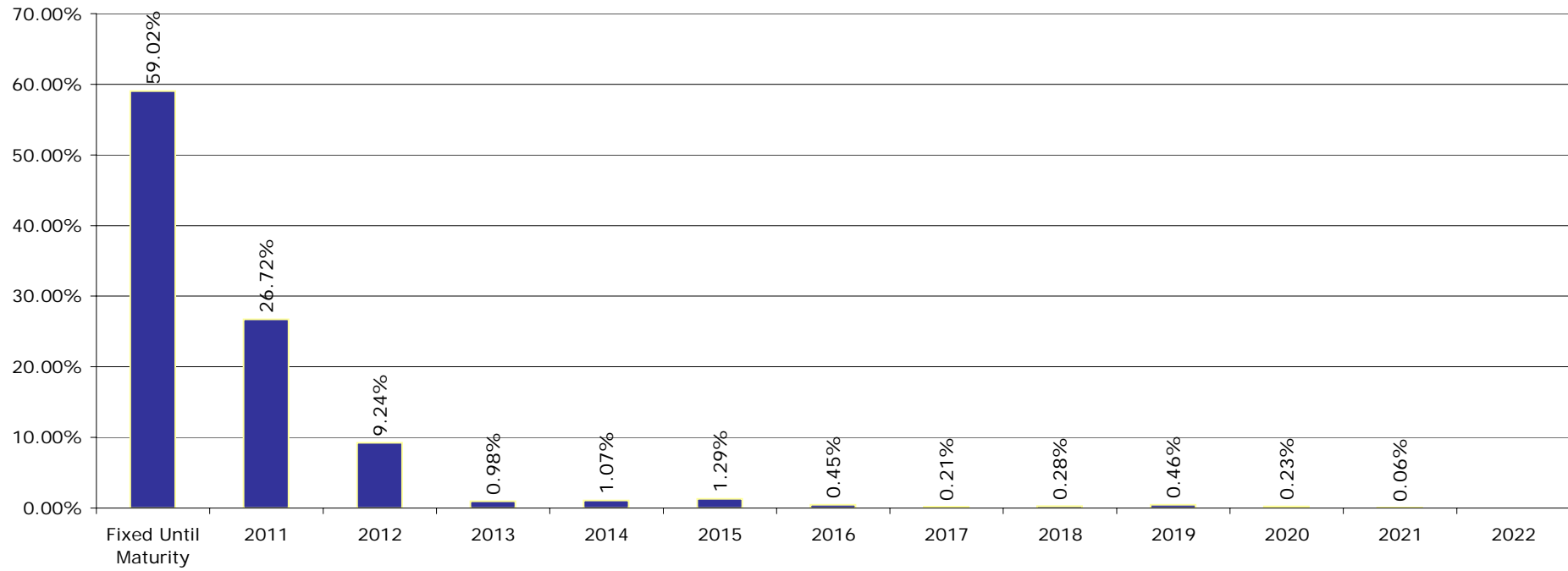
Employee Loans



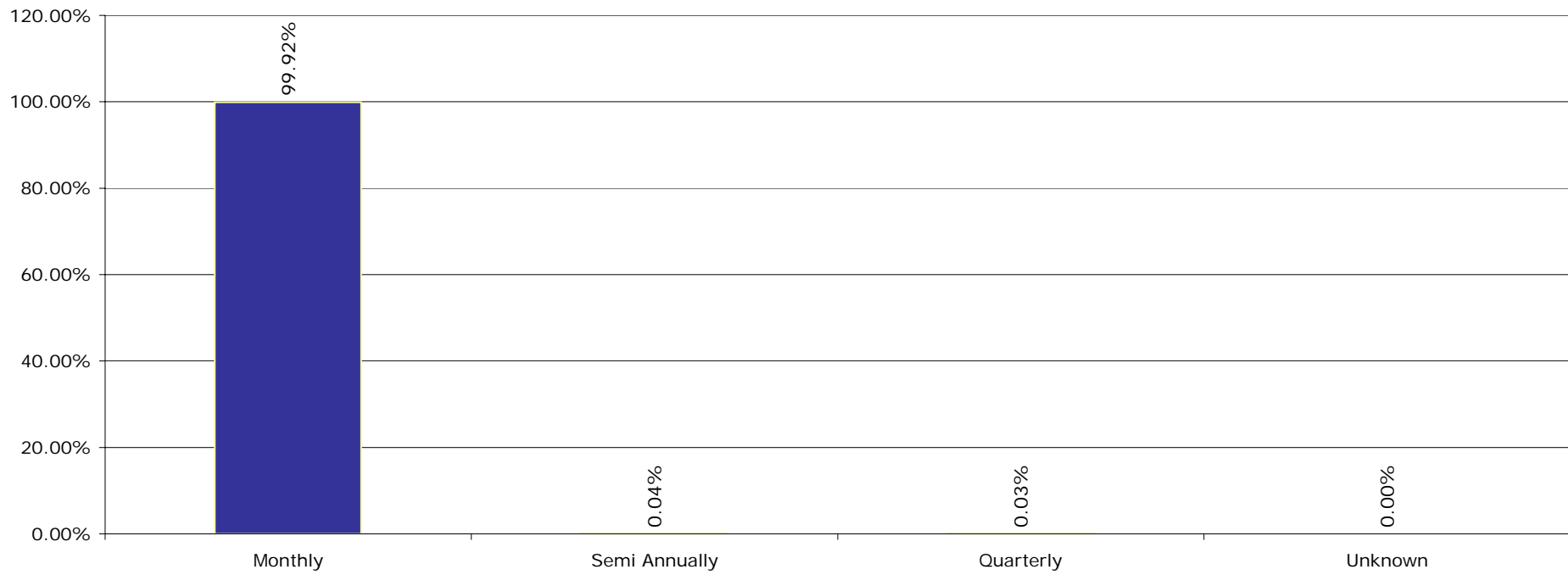
Interest Rate



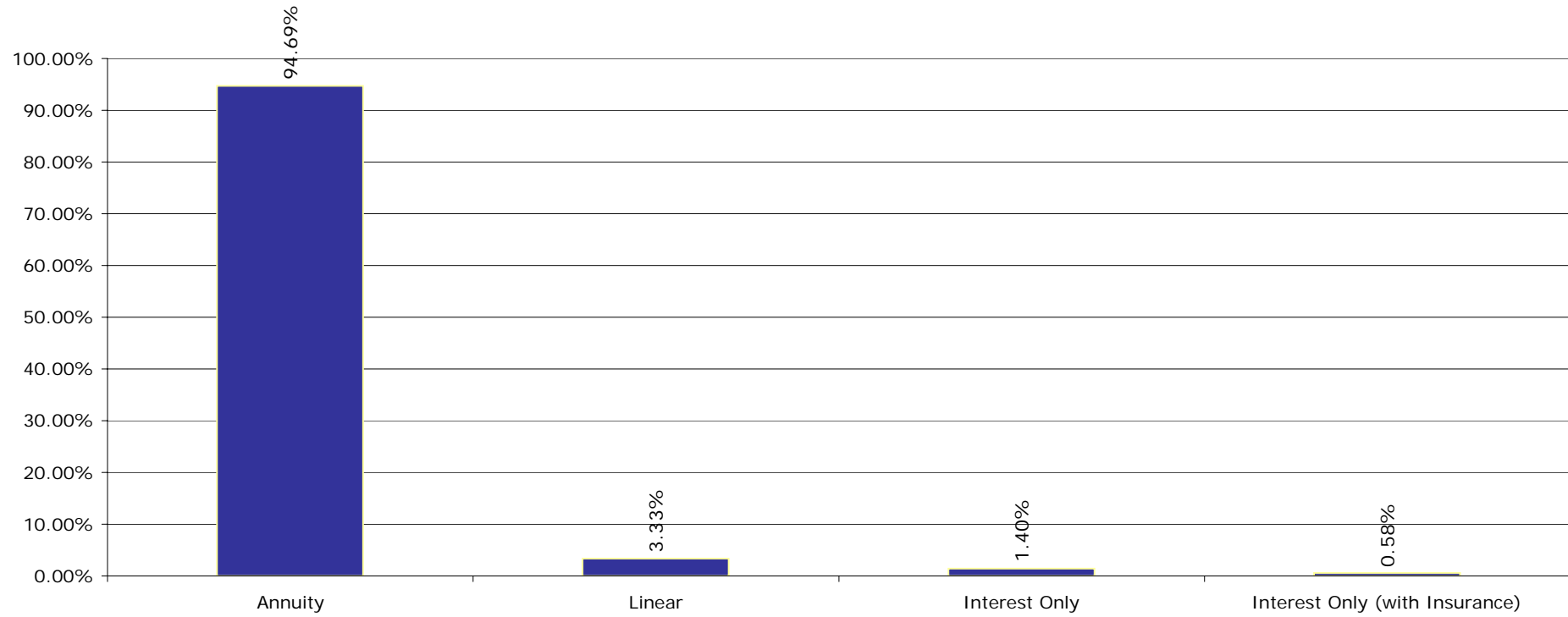
Next Reset Year



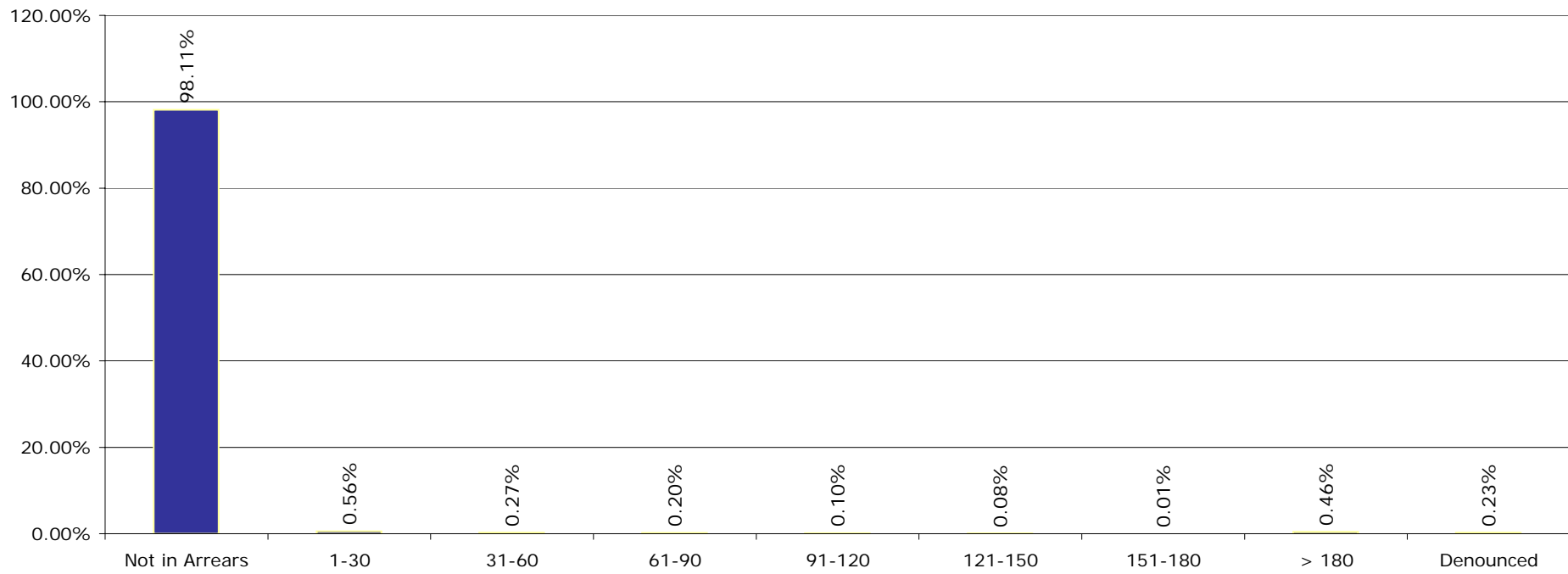
Interest Payment Frequency



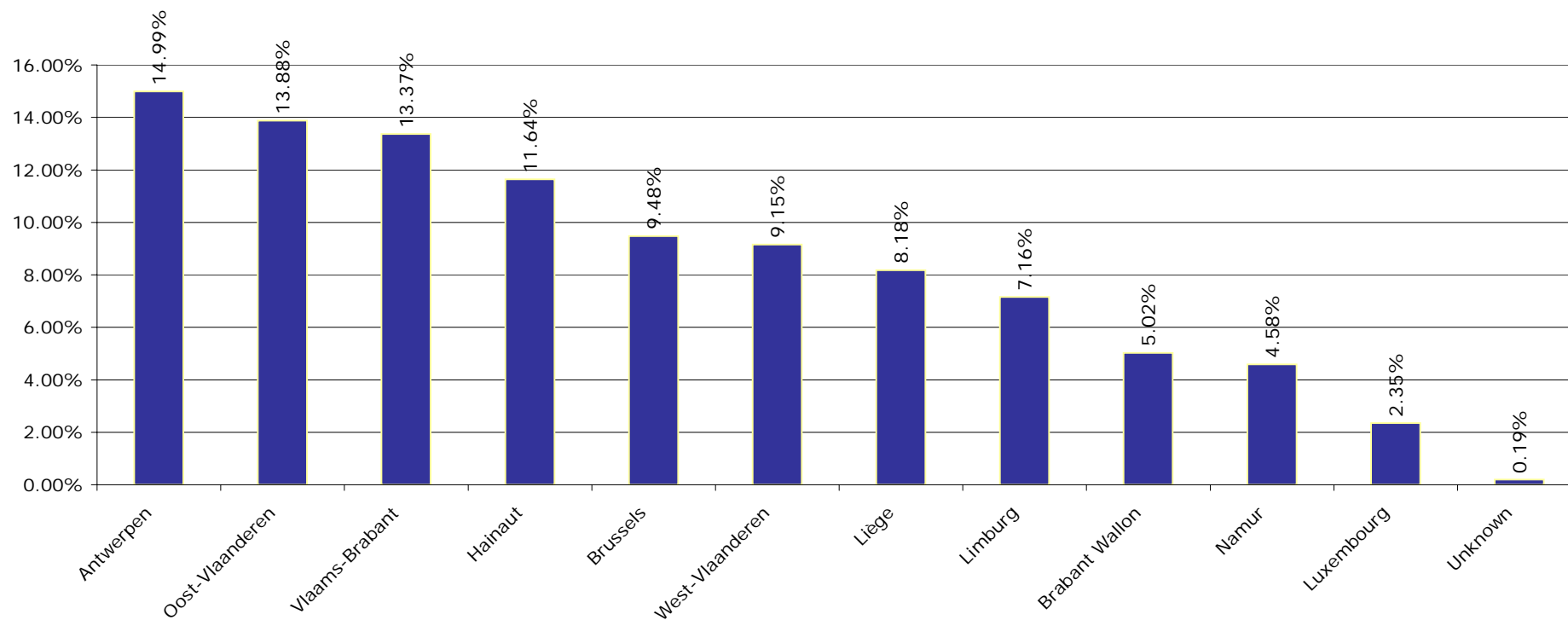
Redemption Type



Days in Arrears



Borrower Province



Bass Master Issuer

Pool Characteristics

Mortgage pool as of: 31-03-2011

1. Key characteristics

Outstanding Principal Balance (EUR)	25,799,681,425.96
Average Borrower Balance (EUR)	81,865.55
Maximum Borrower Balance (EUR)	1,966,386.66
Number of Borrowers	315,147
Number of Advances	481,688
Weighted Average Seasoning (years)	4.3
Weighted Average Remaining Maturity (years)	15.9
Weighted Average Coupon (%)	3.8
Weighted Average DTI	43.2%
Weighted Average LTV	62.8%
Weighted Average Indexed LTV	54.07%
Weighted Mortg Covg Ratio	121.0%

Bass Master Issuer

Pool Characteristics

Mortgage pool as of: 31-03-2011

2. Loan Size

Ranges	Outstanding Principal	%	No. of Borrowers	%
Loan Size <=50000	3,310,798,567	12.83%	138,883	44.07%
50000 < Loan Size <= 100000	5,969,012,324	23.14%	81,591	25.89%
100000 < Loan Size <= 150000	5,824,698,253	22.58%	47,353	15.03%
150000 < Loan Size <= 200000	4,416,018,052	17.12%	25,616	8.13%
200000 < Loan Size <= 250000	2,511,667,058	9.74%	11,308	3.59%
250000 < Loan Size <= 300000	1,285,604,342	4.98%	4,720	1.50%
300000 < Loan Size <= 350000	708,414,053	2.75%	2,193	0.70%
350000 < Loan Size <= 400000	447,501,579	1.73%	1,199	0.38%
400000 < Loan Size <= 450000	290,093,071	1.12%	687	0.22%
450000 < Loan Size <= 500000	217,939,639	0.84%	459	0.15%
500000 < Loan Size <= 550000	161,826,628	0.63%	309	0.10%
550000 < Loan Size <= 600000	116,225,676	0.45%	202	0.06%
600000 < Loan Size <= 650000	90,672,816	0.35%	145	0.05%
650000 < Loan Size <= 700000	74,389,457	0.29%	110	0.03%
700000 < Loan Size <= 750000	40,569,035	0.16%	56	0.02%
750000 < Loan Size <= 800000	42,003,238	0.16%	54	0.02%
800000 < Loan Size <= 850000	34,465,548	0.13%	42	0.01%
850000 < Loan Size <= 900000	29,718,714	0.12%	34	0.01%
900000 < Loan Size <= 950000	24,992,704	0.10%	27	0.01%
950000 < Loan Size <= 1000000	16,688,735	0.06%	17	0.01%
Loan Size > 1000000	186,381,937	0.72%	142	0.05%
Total	25,799,681,426	100.00%	315,147	100.00%

Bass Master Issuer

Pool Characteristics

Mortgage pool as of: 31-03-2011

3. Loan to Value

Ranges	Outstanding Principal	%	No. of Borrowers	%
LTV <=0.1	329,813,405	1.28%	30,732	9.75%
0.1 < LTV <= 0.2	1,153,534,075	4.47%	41,557	13.19%
0.2 < LTV <= 0.3	1,862,182,595	7.22%	39,270	12.46%
0.3 < LTV <= 0.4	2,462,986,401	9.55%	36,771	11.67%
0.4 < LTV <= 0.5	2,893,788,980	11.22%	34,789	11.04%
0.5 < LTV <= 0.6	2,936,834,461	11.38%	29,887	9.48%
0.6 < LTV <= 0.7	2,971,151,612	11.52%	25,879	8.21%
0.7 < LTV <= 0.8	3,088,031,890	11.97%	23,995	7.61%
0.8 < LTV <= 0.9	3,110,910,718	12.06%	21,381	6.78%
0.9 < LTV <= 1.0	3,975,515,149	15.41%	24,722	7.84%
LTV >1	1,014,932,142	3.93%	6,164	1.96%
Total	25,799,681,426	100.00%	315,147	100.00%

Bass Master Issuer

Pool Characteristics

Mortgage pool as of: 31-03-2011

4. Indexed Loan to Value

Ranges	Outstanding Principal	%	No. of Borrowers	%
Indexed LTV <=0.1	1,080,121,277	4.19%	64,460	20.45%
0.1 < Indexed LTV <= 0.2	2,460,366,179	9.54%	56,281	17.86%
0.2 < Indexed LTV <= 0.3	2,986,641,322	11.58%	43,854	13.92%
0.3 < Indexed LTV <= 0.4	2,972,309,190	11.52%	32,526	10.32%
0.4 < Indexed LTV <= 0.5	2,897,641,829	11.23%	26,758	8.49%
0.5 < Indexed LTV <= 0.6	2,548,707,996	9.88%	20,648	6.55%
0.6 < Indexed LTV <= 0.7	2,358,048,992	9.14%	17,088	5.42%
0.7 < Indexed LTV <= 0.8	2,297,342,145	8.90%	15,470	4.91%
0.8 < Indexed LTV <= 0.9	2,195,425,605	8.51%	13,866	4.40%
0.9 < Indexed LTV <= 1.0	3,176,666,824	12.31%	19,319	6.13%
Indexed LTV > 1	826,410,068	3.20%	4,877	1.55%
Total	25,799,681,426	100.00%	315,147	100.00%

Bass Master Issuer

Pool Characteristics

Mortgage pool as of: 31-03-2011

5. Mortgage Coverage Ratio

Ranges	Outstanding Principal	%	No. of Borrowers	%
Mortg Covg Ratio = 0	881,678,278	3.42%	8,957	2.84%
0 < Mortg Covg Ratio <= 0.1	96,656,447	0.37%	206	0.07%
0.1 < Mortg Covg Ratio <= 0.2	263,827,469	1.02%	808	0.26%
0.2 < Mortg Covg Ratio <= 0.3	504,023,935	1.95%	1,979	0.63%
0.3 < Mortg Covg Ratio <= 0.4	806,941,954	3.13%	3,792	1.20%
0.4 < Mortg Covg Ratio <= 0.5	1,117,458,603	4.33%	5,961	1.89%
0.5 < Mortg Covg Ratio <= 0.6	1,581,837,388	6.13%	8,951	2.84%
0.6 < Mortg Covg Ratio <= 0.7	1,004,166,007	3.89%	6,382	2.03%
0.7 < Mortg Covg Ratio <= 0.8	602,548,845	2.34%	4,187	1.33%
0.8 < Mortg Covg Ratio <= 0.9	427,685,976	1.66%	3,103	0.98%
0.9 < Mortg Covg Ratio <= 1.0	552,325,871	2.14%	3,891	1.23%
1.0 < Mortg Covg Ratio <= 1.1	6,130,408,765	23.76%	46,923	14.89%
1.1 < Mortg Covg Ratio <= 1.2	3,014,693,177	11.69%	28,625	9.08%
1.2 < Mortg Covg Ratio <= 1.3	2,093,261,974	8.11%	23,826	7.56%
1.3 < Mortg Covg Ratio <= 1.4	1,306,815,075	5.07%	16,898	5.36%
1.4 < Mortg Covg Ratio <= 1.5	904,158,170	3.50%	13,501	4.28%
1.5 < Mortg Covg Ratio <= 1.6	683,755,573	2.65%	11,082	3.52%
1.6 < Mortg Covg Ratio <= 1.7	512,994,476	1.99%	8,858	2.81%
1.7 < Mortg Covg Ratio <= 1.8	405,513,098	1.57%	7,612	2.42%
1.8 < Mortg Covg Ratio <= 1.9	388,045,677	1.50%	7,993	2.54%
1.9 < Mortg Covg Ratio <= 2.0	379,081,687	1.47%	8,568	2.72%
Mortg Covg Ratio > 2	2,141,802,982	8.30%	93,044	29.52%
Total	25,799,681,426	100.00%	315,147	100.00%

Bass Master Issuer

Pool Characteristics

Mortgage pool as of: 31-03-2011

6. Total Coverage Ratio

Ranges	Outstanding Principal	%	No. of Borrowers	%
Tot Covg Ratio = 1	257,814,534	1.00%	1,586	0.50%
1 < Tot Covg Ratio <= 1.2	13,500,188,004	52.33%	96,101	30.49%
1.2 < Tot Covg Ratio <= 1.4	4,656,456,588	18.05%	47,906	15.20%
1.4 < Tot Covg Ratio <= 1.6	2,136,115,132	8.28%	28,033	8.90%
1.6 < Tot Covg Ratio <= 1.8	1,272,814,239	4.93%	18,939	6.01%
1.8 < Tot Covg Ratio <= 2.0	1,001,776,236	3.88%	18,365	5.83%
2.0 < Tot Covg Ratio <= 2.2	635,075,701	2.46%	12,218	3.88%
2.2 < Tot Covg Ratio <= 2.4	434,578,065	1.68%	9,393	2.98%
2.4 < Tot Covg Ratio <= 2.6	303,871,350	1.18%	7,036	2.23%
2.6 < Tot Covg Ratio <= 2.8	233,840,974	0.91%	6,101	1.94%
2.8 < Tot Covg Ratio <= 3.0	184,791,965	0.72%	5,091	1.62%
Tot Covg Ratio > 3	1,182,358,638	4.58%	64,378	20.43%
Total	25,799,681,426	100.00%	315,147	100.00%

Bass Master Issuer

Pool Characteristics

Mortgage pool as of: 31-03-2011

7. Origination Year

Ranges	Outstanding Principal	%	No. of Advances	%
1990	8,862,811	0.03%	701	0.15%
1991	9,975,510	0.04%	1,918	0.40%
1992	42,986,493	0.17%	5,149	1.07%
1993	52,030,115	0.20%	4,188	0.87%
1994	68,547,875	0.27%	4,280	0.89%
1995	65,113,684	0.25%	3,273	0.68%
1996	147,851,316	0.57%	9,255	1.92%
1997	217,878,098	0.84%	14,143	2.94%
1998	313,029,600	1.21%	15,313	3.18%
1999	812,532,374	3.15%	33,378	6.93%
2000	259,897,385	1.01%	8,946	1.86%
2001	233,728,633	0.91%	9,058	1.88%
2002	398,692,270	1.55%	12,594	2.61%
2003	1,188,487,503	4.61%	30,192	6.27%
2004	1,338,940,568	5.19%	27,788	5.77%
2005	3,470,510,641	13.45%	67,424	14.00%
2006	3,137,217,378	12.16%	48,917	10.16%
2007	2,842,013,296	11.02%	40,328	8.37%
2008	2,566,981,749	9.95%	36,920	7.66%
2009	3,892,347,876	15.09%	50,898	10.57%
2010	4,316,908,280	16.73%	52,050	10.81%
2011	415,147,970	1.61%	4,975	1.03%
Total	25,799,681,426	100.00%	481,688	100.00%

Bass Master Issuer

Pool Characteristics

Mortgage pool as of: 31-03-2011

8. Seasoning

Ranges (in year)	Outstanding Principal	%	No. of Advances	%
Seasoning <= 1	3,658,319,902	14.18%	44,354	9.21%
1 < Seasoning <= 2	4,163,260,874	16.14%	53,009	11.00%
2 < Seasoning <= 3	2,813,148,695	10.90%	39,460	8.19%
3 < Seasoning <= 4	2,718,627,302	10.54%	38,639	8.02%
4 < Seasoning <= 5	3,064,650,359	11.88%	46,013	9.55%
5 < Seasoning <= 6	3,549,260,599	13.76%	66,647	13.84%
6 < Seasoning <= 7	1,792,767,623	6.95%	36,254	7.53%
7 < Seasoning <= 8	1,252,891,638	4.86%	30,852	6.40%
8 < Seasoning <= 9	475,274,330	1.84%	14,144	2.94%
9 < Seasoning <= 10	266,483,092	1.03%	10,234	2.12%
10 < Seasoning <= 11	245,361,110	0.95%	8,528	1.77%
11 < Seasoning <= 12	748,969,461	2.90%	29,987	6.23%
12 < Seasoning <= 13	395,575,621	1.53%	18,418	3.82%
13 < Seasoning <= 14	226,069,266	0.88%	14,342	2.98%
14 < Seasoning <= 15	156,837,362	0.61%	10,235	2.12%
Seasoning > 15	272,184,194	1.05%	20,572	4.27%
Total	25,799,681,426	100.00%	481,688	100.00%

Bass Master Issuer

Pool Characteristics

Mortgage pool as of: 31-03-2011

9. Remaining Maturity

Ranges (in year)	Outstanding Principal	%	No. of Advances	%
Remaining Maturity <= 5	1,646,055,824	6.38%	107,071.00	22.23%
5 < Remaining Maturity <= 10	4,735,077,364	18.35%	132,121.00	27.43%
10 < Remaining Maturity <= 15	6,063,747,448	23.50%	100,056.00	20.77%
15 < Remaining Maturity <= 20	5,810,877,981	22.52%	69,124.00	14.35%
20 < Remaining Maturity <= 25	4,200,002,208	16.28%	42,485.00	8.82%
25 < Remaining Maturity <= 30	3,134,609,834	12.15%	28,926.00	6.01%
30 < Remaining Maturity <= 35	48,984,787	0.19%	436.00	0.09%
Remaining Maturity > 35	160,325,979	0.62%	1,469.00	0.30%
Total	25,799,681,426	100.00%	481,688	100.00%

Bass Master Issuer

Pool Characteristics

Mortgage pool as of: 31-03-2011

10. Original Maturity

Ranges (in year)	Outstanding Principal	%	No. of Advances	%
Original Maturity <= 5	184,376,020	0.71%	2,858	0.59%
5 < Original Maturity <= 10	1,346,376,781	5.22%	55,180	11.46%
10 < Original Maturity <= 15	5,195,725,556	20.14%	152,552	31.67%
15 < Original Maturity <= 20	9,618,063,246	37.28%	168,602	35.00%
20 < Original Maturity <= 25	5,642,507,115	21.87%	66,298	13.76%
25 < Original Maturity <= 30	3,546,904,396	13.75%	33,778	7.01%
30 < Original Maturity <= 35	99,503,151	0.39%	896	0.19%
35 < Original Maturity <= 40	165,193,727	0.64%	1,514	0.31%
Original Maturity > 40	1,031,434	0.00%	10	0.00%
Total	25,799,681,426	100.00%	481,688	100.00%

Bass Master Issuer

Pool Characteristics

Mortgage pool as of: 31-03-2011

11. Interest Type

Interest Type	Outstanding Principal	%	No. of Advances	%
Fixed	14,858,694,957	57.59%	289,134	60.03%
Variable with Cap	10,528,930,334	40.81%	157,333	32.66%
Variable without cap	412,056,136	1.60%	35,221	7.31%
Total	25,799,681,426	100.00%	481,688	100.00%

Bass Master Issuer

Pool Characteristics

Mortgage pool as of: 31-03-2011

12. Debt to Income

Ranges	Outstanding Principal	%	No. of Advances	%
DTI <= 0.1	216,055,288	0.84%	6,856	1.42%
0.1 < DTI <= 0.2	1,864,726,718	7.23%	42,193	8.76%
0.2 < DTI <= 0.3	4,614,840,375	17.89%	84,240	17.49%
0.3 < DTI <= 0.4	6,429,527,745	24.92%	94,167	19.55%
0.4 < DTI <= 0.5	4,577,919,582	17.74%	58,990	12.25%
0.5 < DTI <= 0.6	2,197,529,370	8.52%	25,810	5.36%
0.6 < DTI <= 0.7	1,167,230,067	4.52%	12,735	2.64%
0.7 < DTI <= 0.8	602,744,177	2.34%	6,342	1.32%
DTI > 0.8	719,562,971	2.79%	7,352	1.53%
Unknown	3,409,545,131	13.22%	143,003	29.69%
Total	25,799,681,426	100.00%	481,688	100.00%

Bass Master Issuer

Pool Characteristics

Mortgage pool as of: 31-03-2011

13. Employee Loans

Employees	Outstanding Principal	%	No. of Advances	%
No	25,177,812,781	97.59%	465,583	96.66%
Yes	621,868,645	2.41%	16,105	3.34%
Total	25,799,681,426	100.00%	481,688	100.00%

Bass Master Issuer

Pool Characteristics

Mortgage pool as of: 31-03-2011

14. Interest Rate

Ranges	Outstanding Principal	%	No. of Advances	%
0.00 < Interest Rate <= 0.02	2,154,370,030	8.35%	34,770	7.22%
0.02 < Interest Rate <= 0.03	4,390,944,534	17.02%	67,199	13.95%
0.03 < Interest Rate <= 0.04	6,421,026,165	24.89%	102,601	21.30%
0.04 < Interest Rate <= 0.05	9,741,530,979	37.76%	184,989	38.40%
0.05 < Interest Rate <= 0.06	2,738,658,267	10.62%	73,280	15.21%
0.06 < Interest Rate <= 0.07	321,325,055	1.25%	17,206	3.57%
0.07 < Interest Rate <= 0.08	30,229,977	0.12%	1,506	0.31%
0.08 < Interest Rate <= 0.09	1,100,690	0.00%	80	0.02%
0.09 < Interest Rate <= 0.10	348,074	0.00%	30	0.01%
0.10 < Interest Rate <= 0.11	129,543	0.00%	20	0.00%
0.11 < Interest Rate <= 0.12	18,111	0.00%	7	0.00%
Total	25,799,681,426	100.00%	481,688	100.00%

Bass Master Issuer

Pool Characteristics

Mortgage pool as of: 31-03-2011

15. Next Reset Year

Year	Outstanding Principal	%	No. of Advances	%
Fixed Until Maturity	15,226,791,335	59.02%	322,287	66.91%
2011	6,893,337,261	26.72%	101,611	21.09%
2012	2,384,885,492	9.24%	35,979	7.47%
2013	251,707,490	0.98%	6,236	1.29%
2014	275,935,120	1.07%	5,026	1.04%
2015	332,820,058	1.29%	4,942	1.03%
2016	115,338,702	0.45%	1,761	0.37%
2017	52,991,033	0.21%	711	0.15%
2018	73,180,902	0.28%	927	0.19%
2019	119,602,271	0.46%	1,415	0.29%
2020	58,094,505	0.23%	631	0.13%
2021	14,997,257	0.06%	162	0.03%
2022	0	0.00%	0	0.00%
Total	25,799,681,426	100.00%	481,688	100.00%

Bass Master Issuer

Pool Characteristics

Mortgage pool as of: 31-03-2011

16. Interest Payment Frequency

Frequency	Outstanding Principal	%	No. of Advances	%
Monthly	25,779,406,069	99.92%	480,183	99.69%
Semi Annually	10,437,469	0.04%	1,175	0.24%
Quarterly	8,675,602	0.03%	282	0.06%
Unknown	1,162,286	0.00%	48	0.01%
Total	25,799,681,426	100.00%	481,688	100.00%

Bass Master Issuer

Pool Characteristics

Mortgage pool as of: 31-03-2011

17. Redemption Type

Redemption Type	Outstanding Principal	%	No. of Advances	%
Annuity	24,429,520,030	94.69%	441,600.00	91.68%
Linear	860,174,504.25	3.33%	35,714.00	7.41%
Interest Only	360,937,773.57	1.40%	3,071.00	0.64%
Interest Only (with Insurance)	149,049,118.16	0.58%	1,303.00	0.27%
Total	25,799,681,426	100.00%	481,688	100.00%

Bass Master Issuer

Pool Characteristics

Mortgage pool as of: 31-03-2011

18. Days in Arrears

No. of Days	Outstanding Principal	%	No. of Advances	%
Not in Arrears	25,312,429,371	98.11%	475,949.00	98.81%
1-30	143,469,242	0.56%	1,885.00	0.39%
31-60	69,270,249	0.27%	735.00	0.15%
61-90	50,338,369	0.20%	532.00	0.11%
91-120	25,417,227	0.10%	249.00	0.05%
121-150	21,083,105	0.08%	226.00	0.05%
151-180	1,603,598	0.01%	20.00	0.00%
> 180	117,392,977	0.46%	1,330.00	0.28%
Denounced	58,677,287	0.23%	762.00	0.16%
Total	25,799,681,426	100.00%	481,688	100.00%

Bass Master Issuer

Pool Characteristics

Mortgage pool as of: 31-03-2011

19. Borrower Province

Province	Outstanding Principal	%	No. of Advances	%
Antwerpen	3,868,572,160	14.99%	70,872.00	14.71%
Oost-Vlaanderen	3,580,058,288	13.88%	69,427.00	14.41%
Vlaams-Brabant	3,449,151,002	13.37%	62,293.00	12.93%
Hainaut	3,003,263,125	11.64%	61,344.00	12.74%
Brussels	2,446,163,666	9.48%	32,059.00	6.66%
West-Vlaanderen	2,361,294,853	9.15%	48,172.00	10.00%
Liège	2,110,020,402	8.18%	42,308.00	8.78%
Limburg	1,847,313,642	7.16%	37,665.00	7.82%
Brabant Wallon	1,295,656,074	5.02%	21,785.00	4.52%
Namur	1,182,702,847	4.58%	23,295.00	4.84%
Luxembourg	605,247,987	2.35%	11,750.00	2.44%
Unknown	50,237,380	0.19%	718.00	0.15%
Total	25,799,681,426	100.00%	481,688	100.00%