



Disclaimer - Important notices

(i) The Product Information displayed on this Site has been uploaded by the Issuers of the relevant Products. None of the information displayed on this Site shall form the basis of any contract. Any User of this Site will be required to acknowledge that it has not relied on, or been induced to enter into any contract by, any representation or warranty.

(ii) The Covered Bond Label Foundation has not independently verified the Product Information displayed on this Site. Accordingly, no representation, warranty or undertaking, express or implied, is made, and no responsibility is accepted, by the Covered Bond Label Foundation as to or in relation to the accuracy or completeness or otherwise of such Product Information."

(iii) The information provided on or accessible through the Site is not intended for distribution to, or use by, any person or entity in any jurisdiction where such distribution or use would be contrary to local law, or which would subject us or any Issuer, to any authorisation, registration or other requirement within such jurisdiction. You agree not to use or export the information or materials available on or through this Site in violation of laws in your jurisdiction.

TERMS OF USE

This website www.coveredbondlabel.com (the "Site") is owned and operated by the Covered Bond Label Foundation (the Covered Bond Label Foundation together with its affiliates, "we" or "us") a Private Foundation (fondation privée / private stichting) registered in Belgium; whose registered office is at Rue de la Science 14 - 1040 Brussels - Belgium and registered under number 500.950.659 (RPR/RPM Brussels).

The Site is intended for use as a directory of information relating to certain covered bond products ("Products") (the "Product Information") by an issuer of ("Issuer"), or potential investor in ("Investor"), such Products (an Issuer, Investor, or any other person accessing this Site, each a "User" or "you"). The Product Information is provided by each relevant Issuer, and remains at all times the sole responsibility of the relevant Issuer. We have not independently verified any Product Information, nor reviewed whether any Product for which information is available on the Site actually is a covered bond product. This Site or any label made available through it does not constitute, nor contain, any form of credit rating, any offer to sell (or the solicitation of an offer to purchase) any Product, nor does it constitute a recommendation, or investment advice (or any other type of advice) upon which reliance should be placed.

These terms and conditions together with the documents referred to in them set out the terms of use ("T&Cs") on which (a) an Issuer; (b) Investor; or (c) any other User, may make use of the Site. Section A applies primarily to Investors, and Section B applies primarily to Issuers. The General T&Cs in Section C apply to all Users.

Our Acceptable Use Policy and **Privacy Policy** are incorporated into these T&Cs.

Please read the T&Cs carefully before you start to use the Site. By clicking '**Accept**' you indicate that you accept these T&Cs and that you agree to abide by them.

If any provision of these T&Cs shall be deemed unlawful, void or for any reason unenforceable, then that provision shall be deemed severable from these terms and shall not affect the validity and enforceability of any remaining provisions.



SECTION A. INVESTOR T&Cs

1. DIRECTORY SERVICES

The Site is intended to provide you with certain information from Issuers regarding the self-certification of their Products as labelled covered bonds. The requirements of the Covered Bond Label Convention are intended to increase transparency, improve investor access to information, and improve liquidity in covered bonds, but they are not a substitute in any way for each User's independent investment and credit evaluation.

The Product Information on this Site is provided for your convenience only, and does not constitute any form of credit rating, an offer to sell (or the solicitation of an offer to purchase) any Product, nor does it constitute a recommendation, or investment advice (or any other type of advice) upon which reliance should be placed.

Users shall exercise independent judgment when viewing the Site and its contents, to make their own investigations and evaluations of the information contained on this Site or accessible through it, and to consult their own attorney, business adviser, tax adviser, and/or any other professional necessary, as to legal, business, tax and investment-related matters concerning the Products and Product Information contained on this Site. No information contained on the Site should be construed as legal, tax, investment, or accounting advice.

Product Information is incorporated into the directory on the Site following the completion of an automated process conducted by the relevant Issuer. The proper conduct of that process and the accuracy and completeness of the Product Information supplied during that process remain at all times the responsibility of the relevant Issuer. While the Product Information contained on the Site is displayed by us in good faith, no representation is made by us as to its completeness or accuracy. **PRODUCT INFORMATION IS DISPLAYED ON THE SITE "AS IS" AND HAS NOT BEEN INDEPENDENTLY VERIFIED BY US. BY YOUR USE OF THE SITE, YOU AGREE THAT WE HAVE NO LIABILITY**

WHATSOEVER REGARDING THE ACCURACY OF COMPLETENESS OF THE PRODUCT INFORMATION ON THIS SITE. Inclusion of Product Information in the directory on the Site does not constitute a warranty or representation by us that the Product is a covered bond product or complies with any particular criteria or regulations.

Completion of the relevant self-certification automated process by the Issuer will lead to the grant of the Covered Bond Label. The grant of such label is entirely within the control of the relevant Issuer, and we do not independently verify whether such Issuer complies with the relevant criteria. The existence of a Covered Bond Label does not represent any opinion by us about the creditworthiness of a Product, the value or price of a Product, the appropriateness of a Product's terms, or the Product's future investment performance. Nothing contained on this Site is intended to predict or project future performance.

We make no representation that the Products which are featured on the Site are suitable for you and we disclaim all liability and responsibility arising from any reliance placed on any Product Information or on the Covered Bond Label by any visitor to the Site, or by anyone who may be informed of any of its contents.

From time to time we may make changes to the Site that we feel are appropriate (see Section C, para 3 below).

2. USE OF MATERIALS

Subject to any prohibitions or restrictions stated in third party websites accessible via hyperlinks in the Site over which we have no control, you may view the content published on this Site, and you are welcome to print hard copies of, and/or download, material on it for your personal use or internal business purposes (in which case you are required to preserve in your copies any copyright materials displayed in the original materials and otherwise to acknowledge the Site as the source of the material). All downloading of material from the Site must be in accordance with our Acceptable Use Policy. All other copying is strictly prohibited.

The use of material printed or downloaded from our Site must be in accordance with our Acceptable Use Policy.

3. LINKS FROM AND TO OUR SITE

Where the Site contains hyperlinks to other websites and resources provided by third parties, these links are provided for your information only. We have no control over the contents of those websites or resources, and accept no responsibility for them or for any loss or damage that may arise from your use of them. Users follow links on this Site to external websites at their sole risk.

We accept no liability for and do not endorse any statements, advertisements, information, products or services that are published on or may be accessible through any websites owned or operated by third parties or for any action you may take as a result of using the website.

Those third party websites may also be subject to separate legal terms and conditions, and Issuers may be subject to separate regulation and are solely responsible for satisfying such regulatory requirements. We do not represent or warrant that any Issuer you deal with is fully authorised under or compliant with any law or regulation in any jurisdiction.

You agree not to link any websites to this Site without our express prior written consent. We reserve the right, at any time and for any reason not prohibited by law, to deny permission to anyone to link a website from or to this Site, as well as the right to remove any link currently appearing on our Site.

SECTION B. ISSUER T&Cs

1. DIRECTORY SERVICES AND LABEL

The Issuer is responsible for all Product Information uploaded to and/or validated on the Site by the Issuer or on its behalf, and warrants and represents that all such Product Information is and shall continue to be (and the Issuer shall regularly check the Site in order to ensure that it remains) accurate, complete and up-to-date.

The Issuer understands that we do not limit access to the Site based on the nationality of a User. The Issuer shall be solely responsible for compliance with all laws and regulations applicable to the offer and sale of a Product in all jurisdictions in which such Products are offered.

The Issuer shall indemnify us against, and hold us harmless from, any losses, liabilities or costs (including reasonable administrative and legal costs) suffered by us (including our officers and employees) or by third parties (including investors and regulatory authorities), in relation to the Product Information and/or the Issuer's use of, and statements regarding, a Covered Bond Label.

We accept no liability in relation to any lack of availability of the Site or any omission of, or any display of incorrect, Product Information on the Site for any reason whatsoever including negligence.

The Issuer shall not make any statement that its receipt of a Covered Bond Label constitutes a recommendation by us to buy, sell or hold any Product, or that it reflects our views on the suitability of any Product for a particular Investor.

2. PRODUCTS

By uploading and/or validating Product Information on our Site, the Issuer warrants and represents that the Product complies with the relevant criteria established by the Label Convention as detailed at www.coveredbondlabel.com/pdf/Covered_Bond_Label_Convention_2015.pdf

3. UPLOADING INFORMATION TO OUR SITE

Whenever you upload and/or validate Product Information on the Site, you warrant and represent that any such contribution complies with the content standards set out in our Acceptable Use Policy, and you shall indemnify us against, and hold us harmless from, any losses, liabilities and costs arising in respect of any breach of that warranty.

You shall promptly notify us in the event that Product Information published on the Site, any representation made to us in connection with obtaining a Covered Product Label, or any other information communicated to us in connection with the Site, becomes false, inaccurate, incomplete, or misleading.

Any information you upload to and/or validate on the Site shall be considered non-confidential and non-proprietary, and we have the right to use, copy, distribute and disclose to third parties such information for any purpose.

We also have the right to disclose your identity to any third party who is claiming that any information posted or uploaded by you to the Site constitutes a violation of their intellectual property, privacy or other rights or is otherwise unlawful.

We shall not be responsible, or liable to any third party, for the content or accuracy of any Product Information posted by you or any other user of the Site.

We have the right to remove any information or posting you make on the Site if, in our opinion, such information does not comply with the content standards set out in our Acceptable Use Policy, or for any other reason.



4. LINKING TO OUR SITE

You may link to our home page (www.coveredbondlabel.com), provided you do so in a way that is fair and legal and does not damage our reputation or take advantage of it, but you must not establish a link in such a way as to suggest any form of association, approval or endorsement on our part.

You must not establish a link from any website that is not owned by you.

The Site must not be framed on any other website, nor may you create a link to any part of the Site other than the home page. We reserve the right to withdraw linking permission without notice. The website from which you are linking must comply in all respects with the content standards set out in our Acceptable Use Policy.

5. SECURITY

Issuers are required to register with us in order to use the Site by completing the following Registration Form.

Issuers will be provided with a unique user identification code and password (the "User Details") in order to access the Site for the sole purpose of uploading and/or validating Product Information on the Site. Such User Details are granted by us for the sole and exclusive use of the Issuer.

We reserve the right to alter or cancel User Details and revoke access to the site at any time.

If we need to contact you in relation to your use of the Site, we may contact you by email, telephone or post. The most recent details you have given us will be used. You must promptly inform us of any change in your contact details.

6. DOWNLOADING OF ISSUER PROFILES FROM OUR SITE

An Issuer may download its own profile from our Site in any of the ways expressly permitted by the Site, but Issuers may not download the profiles of any other Issuers or attempt to download profiles from the Site by any other means.

SECTION C. GENERAL T&Cs

1. SITE ACCESS

Access to the Site is permitted on a temporary basis, and we reserve the right to withdraw or amend the service we provide on the Site without notice. We shall not be liable if for any reason the Site is unavailable at any time or for any period of time.

From time to time, we may restrict access to the Site (either partially or in its entirety).

If you are provided with a user identification code, password or any other piece of information as part of our security procedures you must treat such information as confidential, and you must not disclose it to any third party.

We have the right to disable any user identification code or password, whether chosen by you or allocated by us, at any time, if in our opinion you have failed to comply with any of the provisions of these T&Cs, or for any other reason.

When using the Site, you must comply with the provisions of our **Acceptable Use Policy**. You shall indemnify us against, and hold us harmless from, any losses, liabilities or costs (including reasonable administrative and legal costs) suffered by us (including our officers and employees) or by third parties (including Investors and regulatory authorities) as a result of any breaches of our **Acceptable Use Policy** that you commit.

You are responsible for making all arrangements necessary for you to have access to the Site. You are also responsible for ensuring that all persons who access the Site through your internet connection are aware of these T&Cs and that they comply with them.

2. INTELLECTUAL PROPERTY

All rights in this Site unless otherwise indicated, are owned by us. This Site and all content published on this Site, unless otherwise indicated, are protected by copyright in Belgium and other jurisdictions across the world. All trademarks and devices displayed on this Site, unless otherwise indicated, are owned by us and may be registered in many jurisdictions across the world. Save as provided in these T&Cs, any use or reproduction of these trademarks and/or devices is prohibited.

You must not use any part of the materials on the Site for commercial purposes without our consent.

3. SITE CHANGES

We aim to update the Site on a regular basis, and may change the content at any time. If the need arises, we reserve the right to suspend access to the Site, or close it indefinitely.

4. OUR LIABILITY

The Product Information displayed on the Site is provided by the Issuer, and the granting of any label made available through the website is under the sole control of the Issuer, in each case without any guarantees, conditions, warranties or representations from us as to its accuracy or completeness. To the extent permitted by law, we, and any third parties connected to us, hereby expressly exclude:

- all conditions, warranties and other terms which might otherwise be implied by any applicable law or regulation; and
- any liability for any direct, indirect or consequential loss or damage incurred by any User in connection with the Site or in connection with the use, inability to use or results of the use of the Site, any websites linked to it and any materials posted on it (including, without limitation, the omission of, or the display of incorrect, Product Information on the Site) or in connection with any Product, including loss of: income, revenue, business, profits, contracts, anticipated savings, information, or goodwill, regardless of how any such loss or damage is caused.

5. INFORMATION ABOUT YOU AND VISITS TO OUR SITE

We process information about you in accordance with our Privacy Policy. By using the Site, you consent to such processing and you warrant that all information provided by you is accurate.

6. VIRUSES, HACKING, OTHER OFFENCES

You must not misuse the Site by knowingly introducing viruses, 'trojan horses', worms, logic bombs or other material which is maliciously or technologically harmful. You must not attempt to gain unauthorised access to the Site, the server on which the Site is stored, or any server, computer or database connected to the Site. You must not attack the Site via a denial-of-service attack or a distributed denial-of-service attack.

By breaching this provision, you would commit a criminal offence under the law of 28 November 2000 on computer crime. We shall report any such breach to the relevant law enforcement authorities and we shall co-operate with those authorities by disclosing your identity to them. In the event of such breach, your right to use the Site will cease immediately.

We will not be liable for any loss or damage caused by a distributed denial-of-service attack, viruses or other technologically harmful material that may infect your computer equipment, computer programs, information or other proprietary material due to your use of the Site or to your downloading of any information posted on it or on any website linked to it.

We do not warrant that this Site or any software or material of whatsoever nature available on or downloaded from it will be free from viruses or defects, compatible with your equipment or fit for any purpose. It is your responsibility to use suitable anti-virus software on any software or other material that you may download from this Site and to ensure the compatibility of such software or material with your equipment and software.

We reserve the right to prohibit any activities of any nature or description that, in our sole discretion, might tend to damage or injure our commercial reputation or goodwill or the reputations or goodwill of any of the providers or subscribers to this Site.

7. JURISDICTION AND APPLICABLE LAW

The courts of Brussels, Belgium shall have exclusive jurisdiction over any claim arising from, or related to, a visit to the Site or these T&Cs.

These T&Cs and any dispute or claim arising out of or in connection with them or their subject matter or formation (including non-contractual disputes or claims) shall be governed by and construed in accordance with the laws of Belgium.



8. VARIATIONS

We may revise these T&Cs at any time by amending this page. You are expected to check this page from time to time to take notice of any changes we have made, as they are binding on you. Certain of the provisions contained in these T&Cs may also be superseded by provisions or notices published elsewhere on the Site.

9. CONTACTS

Details of how to contact us are available by clicking on Contact Us.

We shall inform you if any of our contact details change by posting a notice on the Site.

SECTION D. CBFL ACCEPTABLE USE POLICY

This acceptable use policy (the "Policy") sets out the terms agreed between a user of the website ("you") and the Covered Bond Label Foundation ("we" or "us") on which you may use the website www.coveredbondlabel.com (the "Site"). The Policy shall apply to all users of, and visitors to, the Site.

Your use of the Site means that you accept, and agree to abide by, all the terms of the Policy, which supplement our Terms of Use.

1. PROHIBITED USES

You may use the Site for lawful purposes only. You may not use the Site:

- in any way that breaches any applicable local, national or international law or regulation;
- in any way which breaches or contravenes our content standards (see para 2 below);
- in any way that is unlawful or fraudulent, or has any unlawful or fraudulent purpose or effect;
- to transmit, or procure the sending of, any unsolicited or unauthorised advertising or promotional material or any other form of similar solicitation (spam); or
- to knowingly transmit any information, send or upload any material that contains viruses, Trojan horses, worms, time-bombs, keystroke loggers, spyware, adware or any other harmful programs or similar computer code designed to adversely affect the operation of any computer software or hardware.

You also agree:

- not to reproduce, duplicate, copy or re-sell any part of the Site in contravention of the provisions of our Terms of Use; and
- not to access without authority, interfere with, damage or disrupt:
 - any part of the Site;
 - any equipment or network on which the Site is stored;
 - any software used in the provision of the Site; or
 - any equipment or network or software owned or used by any third party.

2. CONTENT STANDARDS

These content standards apply to any and all information (the "Information") which you contribute to the Site.

Information must:

- be accurate; and
- comply with applicable law in Belgium and in any country from which it is posted.

Information must not:

- infringe any copyright, database right, trade mark or other proprietary right of any other person;
- be likely to deceive any person; or
- be provided in breach of any legal duty owed to any person, such as a contractual duty or a duty of confidence;

3. SUSPENSION AND TERMINATION

We will determine, at our sole discretion, whether your use of the Site has caused a breach of the Policy. When a breach of the Policy has occurred, we may take such action as we deem reasonable.

Failure to comply with the Policy will constitute a material breach of our Terms of Use upon which you are permitted to use the Site, and may result in us taking any of the following actions:

- immediate, temporary or permanent withdrawal of your right to use the Site;
- immediate, temporary or permanent removal of any Information uploaded by you to the Site;
- legal proceedings against you for reimbursement of all costs on an indemnity basis (including, but not limited to, reasonable administrative and legal costs) resulting from the breach;
- disclosure of information to law enforcement authorities as requested by law or as we reasonably feel is necessary; or
- any other action we deem to be appropriate;

4. DOWNLOADING AND USE OF INFORMATION FROM OUR SITE

You may download information from our Site in any of the ways expressly permitted by the Site. Where indicated by the Site, you shall supply all the details requested and accept all the applicable terms and conditions before attempting to download any information from the Site. You shall not attempt to download profiles from the Site by any other means.

You may use information that has been downloaded from our Site in accordance with our permitted procedures and/or hard copies of information printed from our Site for your personal use or internal business purposes only (in which case you are required to preserve in your copies any copyright materials displayed in the original materials and otherwise to acknowledge the Site as the source of the material). You may not distribute or show any materials downloaded or printed from our Site to any third parties or quote or refer to any such materials in communications with third parties without obtaining our prior written permission. Any such permission would only be granted by us on terms that the third party in question, prior to viewing any material from our Site, accepts and agrees to comply with these T&Cs as if the third party were a User of the Site.

Regardless of any permission that may be granted by us for you to distribute or show materials downloaded or printed from our Site to third parties, you must not use or export the information or materials available on or through this Site in violation of laws in your, or any other applicable, jurisdiction. It remains your responsibility at all times to ensure that such laws are not violated.



5. CHANGES TO THE POLICY

We may revise the Policy at any time by amending this page. You are expected to check this page from time to time to take notice of any changes we make, as they are legally binding on you. Some of the provisions contained in the Policy may also be superseded by provisions or notices published elsewhere on the Site.

SECTION E. CBFL PRIVACY POLICY

The Covered Bond Label Foundation ("we" or "us") is committed to protecting and respecting the privacy of our users.

This policy (together with our Terms of Use and any other documents referred to on it) sets out the basis on which any personal information we collect from, or that is provided to us by, a user (including from any individual who represents, and/or acts on behalf of, a user) ("you") will be processed by us or by third parties. Please read the following carefully to understand our views and practices regarding your personal information and how we will treat it.

For the purpose of the Law of 8 December 1992 on the protection of privacy in relation to processing of personal information (*loi relative à la protection de la vie privée à l'égard des traitements de données à caractère personnel / wet tot bescherming van de persoonlijke levensfeer ten opzichte van de verwerking van persoonsgegevens*) (the "Belgian DPL"), we (the Covered Bond Label Foundation) are the data controller.

1. INFORMATION COLLECTION AND PROCESSING

We may collect and process the following information about you:

- information that you provide by completing any form on our website (www.coveredbondlabel.com) (the "Site"). This includes information provided at the time of registering to use the Site, subscribing to our service, posting material or requesting further services;
- if you contact us, we may keep a record of that correspondence; and
- details of your visits to the Site and the resources that you access.

This information may include personal information (such as your name or title) and we will only process such personal information for the purposes set out in paragraph 2 below in accordance with the Belgian DPL

2. INFORMATION USE

We may collect and process your personal information for the following purposes:

- to ensure that content from the Site is presented in the most effective manner for your computer;
- to provide you with information, products or services that you request from us or which we feel may interest you; and
- to notify you about changes to our service.

If you do not want us to use your information in this way, or to pass your details on to third parties for marketing purposes, you can refuse consent to such processing by ticking the relevant box situated on the form on which we collect your information.

3. TRANSFER AND STORAGE OF PERSONAL INFORMATION

You agree that your personal information may be communicated to third parties:

- if we are under a duty to disclose or share your personal information in order to comply with any legal obligation, or in order to enforce or apply our Terms of Use and other agreements;
 - in the case of any legitimate interest; and
 - for direct marketing purposes (unless you object to such processing in accordance with paragraph 2 above).
- By submitting your personal information, you also agree that such information may be transferred to, and stored at, a destination outside the European Economic Area ("EEA"), whether or not an adequate level of protection is ensured for personal information in the country of reception.
- Your personal information may also be processed by staff operating outside the EEA who work for us or for one of our processors for the same purposes as listed in paragraph 2 above. Such staff may be engaged in, among other things, the provision of support services.

4. SECURITY

We will take all steps reasonably necessary to ensure that your information is treated securely and in accordance with this privacy policy, and to prevent personal information being accessible to and processed by unauthorised parties, or being accidentally changed or deleted. There are internal security measures in place to protect the premises, servers, network, data transfers, and the information itself.

You acknowledge however that the transmission of information via the internet is not completely secure. While we will use reasonable endeavours to protect your personal information, we cannot fully guarantee the security of your information transmitted to the Site.

Where we have given you a password which enables you to access certain parts of the Site, you are responsible for keeping this password confidential. We ask you not to share your password with anyone.

5. YOUR RIGHTS

The Belgian DPL gives you the right to access or, where incorrect, amend or delete (at your request and free of charge) personal information pertaining to you. You can exercise these rights at any time by contacting us by email by clicking on Contact Us or by letter addressed to Covered Bond Label Foundation Rue de la Science 14 - 1040 Brussels - Belgium.

You also have the right to ask us not to process your personal information for marketing purposes. You can exercise your right to prevent such processing by checking certain boxes on the forms we use to collect your information or by contacting us by email or by letter in accordance with the above.

6. CHANGES TO OUR PRIVACY POLICY

Any changes we may make to our privacy policy in the future will be posted on this page.

7. CONTACT

If you have any questions about this policy, the collection and use of your personal information or other privacy-specific concerns please contact us by clicking on Contact Us .

Harmonised Transparency Template

2024 Version

Belgium

BNP Paribas Fortis

Reporting Date: 31/8/2024

Cut-off Date: 31/8/2024



Index

- Worksheet A: HTT General
- Worksheet B1: HTT Mortgage Assets
- Worksheet B2: HTT Public Sector Assets
- Worksheet B3: HTT Shipping Assets
- Worksheet C: HTT Harmonised Glossary
- Covered Bond Label Disclaimer
- Worksheet D & Onwards (If Any): National Transparency Template
- Worksheet E: Optional ECB-ECAIs data
- Worksheet F1: Sustainable M data
- Worksheet G1: Crisis M Payment Holidays

A. Harmonised Transparency Template - General Information

HTT 2024

Reporting in Domestic Currency	EUR
CONTENT OF TAB A	
1. Basic Facts	
2. Regulatory Summary	
3. General Cover Pool / Covered Bond Information	
4. Compliance Art 14 CSD Check Table	
5. References to Capital Requirements Regulation (CRR) 12911	
6. Other relevant information	

Field Number	1. Basic Facts				
G.1.1.1	Country	Belgium			
G.1.1.2	Issuer Name	BNP Paribas Fortis SA/NV			
G.1.1.3	Labelled Cover Pool Name	Residential Mortgage Pandbrievien			
G.1.1.4	Link to Issuer's Website	https://www.bnpparibasfortis.com/investors/coveredbonds			
2. Regulatory Summary					
G.2.1.1	Basel Compliance, subject to national jurisdiction (Y/N)	Y			
G.2.1.2	CRD Compliance	Y			
G.2.1.3	CRR Compliance (Y/N)	Y			
3. General Cover Pool / Covered Bond Information					
3.1. General Information		Nominal (mn)			
G.3.1.1	Total Cover Assets	3,578.91			
G.3.1.2	Outstanding Covered Bonds	2,750.00			
3.2. Over-collateralisation (OC)		Statutory	Voluntary	Contractual	Purpose
G.3.2.1	OC (%)	5.00%	25.14%	5.0%	ND1
3.3. Cover Pool Composition		Nominal (mn)			
G.3.3.1	Mortgages	3,578.91			
G.3.3.2	Public Sector	-			
G.3.3.3	Shipping	-			
G.3.3.4	Substitute Assets	20.00			
G.3.3.5	Other	158.56			
G.3.3.6	Total	3,757.5			
3.4. Cover Pool Amortisation Profile		Contractual	Expected Upon Prepayments	% Total Contractual	% Total Expected Upon Prepayments
G.3.4.1	Weighted Average Life (in years)	7.87	ND1		
		Residual Life (mn)			
		By buckets:			
G.3.4.2	0 - 1 Y	78.30	ND1	2.2%	
G.3.4.3	1 - 2 Y	110.56	ND1	3.1%	
G.3.4.4	2 - 3 Y	163.90	ND1	4.6%	
G.3.4.5	3 - 4 Y	204.90	ND1	5.7%	
G.3.4.6	4 - 5 Y	205.37	ND1	5.7%	
G.3.4.7	5 - 10 Y	1,724.05	ND1	48.2%	
G.3.4.8	10+ Y	1,091.83	ND1	30.5%	
G.3.4.9	Total	3,578.9	0	100.0%	0.0%
3.5. Maturity of Covered Bonds		Initial Maturity	Extended Maturity	% Total Initial Maturity	% Total Extended Maturity
G.3.5.1	Weighted Average Life (in years)	2.70	3.70		
		Maturity (mn)			
		By buckets:			
G.3.5.2	0 - 1 Y	500.00	0.0	18.2%	0.0%
G.3.5.3	1 - 2 Y	500.00	0.0	18.2%	0.0%
G.3.5.4	2 - 3 Y	0.00	500.0	0.0%	18.2%
G.3.5.5	3 - 4 Y	750.00	0.0	27.3%	0.0%
G.3.5.6	4 - 5 Y	1,000.00	750.0	36.4%	27.3%
G.3.5.7	5 - 10 Y	0.00	1,000.0	0.0%	36.4%
G.3.5.8	10+ Y	0.00	0.0	0.0%	0.0%
G.3.5.9	Total	2,750.0	2,750.0	100.0%	100.0%
3.6. Cover Assets - Currency		Nominal [before hedging] (mn)	Nominal [after hedging] (mn)	% Total [before]	% Total [after]
G.3.6.1	EUR	3,578.91	0.0	100.0%	
G.3.6.2	AUD				
G.3.6.3	BRL				
G.3.6.4	CAD				
G.3.6.5	CHF				
G.3.6.6	CZK				
G.3.6.7	DKK				
G.3.6.8	GBP				
G.3.6.9	HKD				
G.3.6.10	ISK				
G.3.6.11	JPY				
G.3.6.12	KRW				
G.3.6.13	NOK				
G.3.6.14	PLN				
G.3.6.15	SEK				
G.3.6.16	SGD				
G.3.6.17	USD				
G.3.6.18	Other				
3.7. Covered Bonds - Currency		Nominal [before hedging] (mn)	Nominal [after hedging] (mn)	% Total [before]	% Total [after]
G.3.7.1	EUR	2,750.00	0.0	100.0%	
G.3.7.2	AUD				
G.3.7.3	BRL				
G.3.7.4	CAD				
G.3.7.5	CHF				
G.3.7.6	CZK				
G.3.7.7	DKK				
G.3.7.8	GBP				
G.3.7.9	HKD				
G.3.7.10	ISK				
G.3.7.11	JPY				
G.3.7.12	KRW				
G.3.7.13	NOK				
G.3.7.14	PLN				
G.3.7.15	SEK				
G.3.7.16	SGD				
G.3.7.17	USD				
G.3.7.18	Other				
3.8. Covered Bonds - Breakdown by interest rate		Nominal [before hedging] (mn)	Nominal [after hedging] (mn)	% Total [before]	% Total [after]
G.3.8.1	Fixed coupon	2,750.00	0.0	100.0%	
G.3.8.2	Floating coupon	0.00	0.0	0.0%	
G.3.8.3	Other	0.00	0.0	0.0%	
G.3.8.4	Total	2,750.0	0.0	100.0%	0.0%
3.9. Substitute Assets - Type		Nominal (mn)		% Substitute Assets	
G.3.9.1	Cash	0.00		0.0%	
G.3.9.2	Exposures to/guaranteed by Supranational, Sovereign, Agency (SSA)	20.00		11.2%	
G.3.9.3	Exposures to central banks	0.00		0.0%	
G.3.9.4	Exposures to credit institutions	158.56		88.8%	
G.3.9.5	Other	0.00		0.0%	
G.3.9.6	Total	178.6		100.0%	
3.10. Substitute Assets - Country		Nominal (mn)		% Substitute Assets	
G.3.10.1	Domestic (Country of issuer)	20.00		100.0%	
G.3.10.2	Eurozone	0.00		0.0%	
G.3.10.3	Rest of European Union (EU)	0.00		0.0%	
G.3.10.4	European Economic Area (not member of EU)	0.00		0.0%	
G.3.10.5	Switzerland	0.00		0.0%	
G.3.10.6	Australia	0.00		0.0%	
G.3.10.7	Brazil	0.00		0.0%	
G.3.10.8	Canada	0.00		0.0%	
G.3.10.9	Japan	0.00		0.0%	
G.3.10.10	Korea	0.00		0.0%	
G.3.10.11	New Zealand	0.00		0.0%	
G.3.10.12	Singapore	0.00		0.0%	
G.3.10.13	US	0.00		0.0%	
G.3.10.14	Other	0.00		0.0%	
G.3.10.15	Total EU	20.00		100.0%	
G.3.10.16	Total	20.0		100.0%	
3.11. Liquid Assets		Nominal (mn)		% Cover Pool	
G.3.11.1	Substitute and other marketable assets	20.00		0.56%	
G.3.11.2	Central bank eligible assets	0.00		0.00%	
G.3.11.3	Other	0.00		0.00%	
G.3.11.4	Total	20.0		0.56%	
3.12. Bond List		https://www.coveredbondlabel.com/issuer/			
G.3.12.1	Bond list	131/			
3.13. Derivatives & Swaps					
G.3.13.1	Derivatives in the register / cover pool (notional) (mn)	0.00			
G.3.13.2	Type of interest rate swaps (intra-group, external or both)	0.00			
G.3.13.3	Type of currency rate swaps (intra-group, external or both)	0.00			

14. Sustainable or other special purpose strategy

G.3.14.1	Is sustainability based on sustainable assets not present in the cover pool?
G.3.14.2	Who has provided Second Party Opinion
G.3.14.3	Further details on proceeds strategy
G.3.14.4	Is sustainability based on sustainable collateral assets present in the cover pool?
G.3.14.5	If yes. Further details are available in Tab F
G.3.14.6	Is sustainability based on other criteria?
G.3.14.7	If yes. please provide further details

4. Compliance Art 14 CBD Check table

Row

Row

The issuer believes that, at the time of its issuance and based on transparency data made publicly available by the issuer, these covered bonds would satisfy the eligibility criteria for Article 14(2) of the Covered Bond Directive (EU) 2019/2162. It should be noted, however, that whether or not exposures in the form of covered bonds are eligible to preferential treatment under Regulation (EU) 575/2013 is ultimately a matter to be determined by a relevant investor institution and its relevant supervisory authority and the issuer does not accept any responsibility in this regard.

G.4.1.1	(a) Value of the cover pool total assets:	<u>36</u>
G.4.1.2	(a) Value of outstanding covered bonds:	<u>29</u>
G.4.1.3	(b) List of ISIN of issued covered bonds:	Residential Mortgage Pandémie Programme (bnpparibasfortis.com)
G.4.1.4	(c) Geographical distribution:	<u>43 for Mortgage Assets</u>
G.4.1.5	(c) Type of cover assets:	<u>52</u>
G.4.1.6	(c) Loan size:	186 for Residential Mortgage Assets
G.4.1.7	(c) Valuation Method:	link to Glossary HG.1.15
G.4.1.8	(d) Interest rate risk - cover pool:	<u>149 for Mortgage Assets</u>
G.4.1.9	(d) Currency risk - cover pool:	<u>111</u>
G.4.1.10	(d) Interest rate risk - covered bond:	<u>163</u>
G.4.1.11	(d) Currency risk - covered bond:	<u>137</u>
G.4.1.12	(d) Liquidity Risk - primary assets cover pool:	
G.4.1.13	(d) Credit Risk:	215 LTV Residential Mortgage

5. References to Capital Requirements Regulation

G.5.1.1	Exposure to credit institute credit quality step 1	158.56
---------	--	--------

6. Other relevant information

B1. Harmonised Transparency Template - Mortgage Assets

HTT 2024

Reporting in Domestic Currency EUR

CONTENT OF TAB B1
 7. Mortgage Assets
 7.A Residential Cover Pool
 7.B Commercial Cover Pool

Field Number	7. Mortgage Assets			
	1. Property Type Information	Nominal (mn)		% Total Mortgages
M.7.1.1	Residential	3,578.9		100.0%
M.7.1.2	Commercial	0.0		0.0%
M.7.1.3	Other	0.0		0.0%
M.7.1.4	Total	3,578.9		100.0%
	2. General Information	Residential Loans	Commercial Loans	Total Mortgages
M.7.2.1	Number of mortgage loans	50,476.0		50,476
	3. Concentration Risks	% Residential Loans	% Commercial Loans	% Total Mortgages
M.7.3.1	10 largest exposures	0.73%		0.73%
	4. Breakdown by Geography	% Residential Loans	% Commercial Loans	% Total Mortgages
M.7.4.1	European Union	100.0%	0.0%	100.0%
M.7.4.2	Austria			
M.7.4.3	Belgium	100.0%		100.0%
M.7.4.4	Bulgaria			
M.7.4.5	Croatia			
M.7.4.6	Cyprus			
M.7.4.7	Czechia			
M.7.4.8	Denmark			
M.7.4.9	Estonia			
M.7.4.10	Finland			
M.7.4.11	France			
M.7.4.12	Germany			
M.7.4.13	Greece			
M.7.4.14	Netherlands			
M.7.4.15	Hungary			
M.7.4.16	Ireland			
M.7.4.17	Italy			
M.7.4.18	Latvia			
M.7.4.19	Lithuania			
M.7.4.20	Luxembourg			
M.7.4.21	Malta			
M.7.4.22	Poland			
M.7.4.23	Portugal			
M.7.4.24	Romania			
M.7.4.25	Slovakia			
M.7.4.26	Slovenia			
M.7.4.27	Spain			
M.7.4.28	Sweden			
M.7.4.29	European Economic Area (not member of EU)	0.0%	0.0%	0.0%
M.7.4.30	Iceland			
M.7.4.31	Liechtenstein			
M.7.4.32	Norway			
M.7.4.33	Other	0.0%	0.0%	0.0%
M.7.4.34	Switzerland			
M.7.4.35	United Kingdom			
M.7.4.36	Australia			
M.7.4.37	Brazil			
M.7.4.38	Canada			
M.7.4.39	Japan			
M.7.4.40	Korea			
M.7.4.41	New Zealand			
M.7.4.42	Singapore			
M.7.4.43	US			
M.7.4.44	Other			

5. Breakdown by regions of main country of origin		% Residential Loans	% Commercial Loans	% Total Mortgages	
M.7.5.1	Antwerpen	16.79%		16.79%	
M.7.5.2	Vlaams-Brabant	13.46%		13.46%	
M.7.5.3	Oost-Vlaanderen	14.70%		14.70%	
M.7.5.4	Brussels	10.15%		10.15%	
M.7.5.5	West-Vlaanderen	10.73%		10.73%	
M.7.5.6	Limburg	6.90%		6.90%	
M.7.5.7	Liège	7.97%		7.97%	
M.7.5.8	Hainaut	6.30%		6.30%	
M.7.5.9	Brabant Wallon	5.49%		5.49%	
M.7.5.10	Namur	4.32%		4.32%	
M.7.5.11	Luxembourg	3.05%		3.05%	
M.7.5.12	Other	0.14%		0.14%	
6. Breakdown by Interest Rate		% Residential Loans	% Commercial Loans	% Total Mortgages	
M.7.6.1	Fixed rate	92.13%		92.13%	
M.7.6.2	Floating rate	0.00%		0.00%	
M.7.6.3	Other	7.87%		7.87%	
7. Breakdown by Repayment Type		% Residential Loans	% Commercial Loans	% Total Mortgages	
M.7.7.1	Bullet / interest only	2.60%		2.60%	
M.7.7.2	Amortizing	97.40%		97.40%	
M.7.7.3	Other	0.00%		0.00%	
8. Loan Seasoning		% Residential Loans	% Commercial Loans	% Total Mortgages	
M.7.8.1	Up to 12months	4.73%		4.73%	
M.7.8.2	> 12 - ≤ 24 months	8.36%		8.36%	
M.7.8.3	> 24 - ≤ 36 months	15.38%		15.38%	
M.7.8.4	> 36 - ≤ 60 months	20.38%		20.38%	
M.7.8.5	> 60 months	51.15%		51.15%	
9. Non-Performing Loans (NPLs)		% Residential Loans	% Commercial Loans	% Total Mortgages	
M.7.9.1	% NPLs	0.00%		0.00%	
7.A Residential Cover Pool					
10. Loan Size Information		Nominal	Number of Loans	% Residential Loans	% No. of Loans
M.7A.10.1	Average loan size (000s)	70.90			
	By buckets (mn):				
M.7A.10.2	≤100K	1,497.54	38,564	41.8%	76.4%
M.7A.10.3	>100K and ≤200K	1,249.14	9,037	34.9%	17.9%
M.7A.10.4	>200K and ≤300K	493.44	2,060	13.8%	4.1%
M.7A.10.5	>300K and ≤400K	188.69	553	5.3%	1.1%
M.7A.10.6	>400K	150.10	262	4.2%	0.5%
M.7A.10.26	Total	3,578.9	50,476	100.0%	100.0%

11. Loan to Value (LTV) Information - UNINDEXED		Nominal	Number of Loans	% Residential Loans	% No. of Loans
M.7A.11.1	Weighted Average LTV (%)	57.61%			
By LTV buckets (mn):					
M.7A.11.2	>0 - <=40 %	852.14	22,595	23.8%	44.8%
M.7A.11.3	>40 - <=50 %	464.29	6,176	13.0%	12.2%
M.7A.11.4	>50 - <=60 %	494.38	5,883	13.8%	11.7%
M.7A.11.5	>60 - <=70 %	576.73	6,085	16.1%	12.1%
M.7A.11.6	>70 - <=80 %	608.23	5,456	17.0%	10.8%
M.7A.11.7	>80 - <=90 %	429.31	3,153	12.0%	6.2%
M.7A.11.8	>90 - <=100 %	114.57	779	3.2%	1.5%
M.7A.11.9	>100%	39.26	349	1.1%	0.7%
M.7A.11.10	Total	3,578.9	50,476	100.0%	100.0%
12. Loan to Value (LTV) Information - INDEXED		Nominal	Number of Loans	% Residential Loans	% No. of Loans
M.7A.12.1	Weighted Average LTV (%)	49.45%			
By LTV buckets (mn):					
M.7A.12.2	>0 - <=40 %	1,274.87	28,888	35.6%	57.2%
M.7A.12.3	>40 - <=50 %	560.79	6,499	15.7%	12.9%
M.7A.12.4	>50 - <=60 %	518.08	5,299	14.5%	10.5%
M.7A.12.5	>60 - <=70 %	497.06	4,537	13.9%	9.0%
M.7A.12.6	>70 - <=80 %	386.99	3,031	10.8%	6.0%
M.7A.12.7	>80 - <=90 %	242.07	1,582	6.8%	3.1%
M.7A.12.8	>90 - <=100 %	78.45	444	2.2%	0.9%
M.7A.12.9	>100%	20.60	196	0.6%	0.4%
M.7A.12.10	Total	3,578.9	50,476	100.0%	100.0%
13. Breakdown by type		% Residential Loans			
M.7A.13.1	Owner occupied	81.95%			
M.7A.13.2	Second home/Holiday houses				
M.7A.13.3	Buy-to-let/Non-owner occupied				
M.7A.13.4	Subsidised housing				
M.7A.13.5	Agricultural				
M.7A.13.6	Other	18.05%			
14. Loan by Ranking		% Residential Loans			
M.7A.14.1	1st lien / No prior ranks	100.00%			
M.7A.14.2	Guaranteed				
M.7A.14.3	Other				
15. EPC Information of the financed RRE - optional		Nominal (mn)	Number of dwellings	% Residential Loans	% No. of Dwellings
M.7A.15.1					
M.7A.15.2					
M.7A.15.3					
M.7A.15.4					
M.7A.15.5					
M.7A.15.6					
M.7A.15.7					
M.7A.15.8					
M.7A.15.9					
M.7A.15.10					
M.7A.15.11					
M.7A.15.12					
M.7A.15.13					
M.7A.15.14					
M.7A.15.15					
M.7A.15.16					
M.7A.15.17					
M.7A.15.18	no data				
M.7A.15.19	Total	0.0	0	0.0%	0.0%
OM.7A.15.1					
OM.7A.15.2					
OM.7A.15.3					
16. Average energy use intensity (kWh/m2 per year) - optional		Nominal (mn)	Number of dwellings	% Residential Loans	% No. of Dwellings
M.7A.16.1					
M.7A.16.2					
M.7A.16.3					
M.7A.16.4					
M.7A.16.5					
M.7A.16.6					
M.7A.16.7					
M.7A.16.8					
M.7A.16.9					
M.7A.16.10					
M.7A.16.11					
M.7A.16.12					
M.7A.16.13					
M.7A.16.14					
M.7A.16.15					
M.7A.16.16					
M.7A.16.17	no data				
M.7A.16.18	Total	0.0	0	0.0%	0.0%
M.7A.16.19					
OM.7A.16.1					
OM.7A.16.2					
OM.7A.16.3					

17. Property Age Structure - optional		Nominal (mn)	Number of dwellings	% Residential Loans	% No. of Dwellings
M.7A.17.1	older than 1919				
M.7A.17.2	1919 - 1945				
M.7A.17.3	1946 - 1960				
M.7A.17.4	1961 - 1970				
M.7A.17.5	1971 - 1980				
M.7A.17.6	1981 - 1990				
M.7A.17.7	1991 - 2000				
M.7A.17.8	2001 - 2005				
M.7A.17.9	2006 - 2010				
M.7A.17.10	2011 - 2015				
M.7A.17.11	2016 - 2020				
M.7A.17.12	2021 and onwards				
M.7A.17.13	no data				
M.7A.17.14	Total	0.0	0	0.0%	0.0%
OM.7A.17.1					
OM.7A.17.2					
OM.7A.17.3					
OM.7A.17.4					
OM.7A.17.5					
OM.7A.17.6					
OM.7A.17.7					
OM.7A.17.8					
OM.7A.17.9					
OM.7A.17.10					
18. Dwelling type - optional		Nominal (mn)	Number of dwellings	% Residential Loans	% No. of Dwellings
M.7A.18.1	House, detached or semi-detached				
M.7A.18.2	Flat or Apartment				
M.7A.18.3	Bungalow				
M.7A.18.4	Terraced House				
M.7A.18.5	Multifamily House				
M.7A.18.6	Land Only				
M.7A.18.7	other				
M.7A.18.8	Total	0.0	0	0.0%	0.0%
OM.7A.18.1					
19. New Residential Property - optional		Nominal (mn)	Number of dwellings	% Residential Loans	% No. of Dwellings
M.7A.19.1	New Property				
M.7A.19.2	Existing property				
M.7A.19.3	other				
M.7A.19.4	no data				
M.7A.19.5	Total	0.0	0	0.0%	0.0%
M.7A.19.6					
20. CO2 emission - by dwelling type - as per national availability		Ton CO2 (per year)	Ton CO2 (per year) (LTV adjusted)	kg CO2/m2 (per year)	
M.7A.20.1	House, detached or semi-detached				
M.7A.20.2	Flat or Apartment				
M.7A.20.3	Bungalow				
M.7A.20.4	Terraced House				
M.7A.20.5	Multifamily House				
M.7A.20.6	Land Only				
M.7A.20.7	other				
M.7A.20.8	no data				
M.7A.20.9	Total	0.0	0.0		
M.7A.20.10	Weighted Average				

C. Harmonised Transparency Template - Glossary

HTT 2024

The definitions below reflect the national specificities

Field	1. Glossary - Standard Harmonised Items	Definition
HG.1.1	OC Calculation: Statutory	Statutory Overcollateralisation is the overcollateralisation percentage required to be provided by each Issuer and included/disclosed in the national covered bond framework.
HG.1.2	OC Calculation: Contractual	Contractual Overcollateralisation is the overcollateralisation percentage each Issuer has contractually agreed to maintain pursuant to the covered bond programme documents.
HG.1.3	OC Calculation: Voluntary	Voluntary Overcollateralisation is the difference (if positive) between the actual overcollateralisation provided by an Issuer and the higher of the contractual and statutory overcollateralisation.
HG.1.4	Interest Rate Types	Cover Assets: fixed until maturity and fixed with a periodic reset. Covered Bonds: fixed
HG.1.5	Residual Life Buckets of Cover assets [i.e. how is the contractual and/or expected residual life defined? What assumptions eg, in terms of prepayments? etc.]	For the buckets concerning 'Residual Life' (G.3.4), we take into account all monthly principal payments, comparable to tabs D.9 and D.10. This is consistent with the G.3.4 title "Cover Pool Amortisation Profile". Hence, we do not use maturity buckets for Cover Assets. Further, no prepayments are taken into account.
HG.1.6	Maturity Buckets of Covered Bonds [i.e. how is the contractual and/or expected maturity defined?]	At the moment, only soft bullet has been issued. We only take into account the Maturity Date, not the Extended Maturity Date
HG.1.7	Maturity Extension Triggers	Belgian allows for "Failure to pay" and "Default"
HG.1.8	LTVs: Definition	As Belgium has general mortgages, we calculate LTV as the total borrower outstanding over the total borrower property value, resp. not indexed (M.7A.11) and indexed (M.7A.12)
HG.1.9	LTVs: Calculation of property/shipping value	Property values are those used in the loan underwriting procedure
HG.1.10	LTVs: Applied property/shipping valuation techniques, including whether use of index, Automated	Yearly updates of the property values are done using a national index calculated by the national institute of statistics in Belgium (StatBel).
HG.1.11	LTVs: Frequency and time of last valuation	Indexation is done on a yearly basis
HG.1.12	Explain how mortgage types are defined whether for residential housing, multi-family housing, commercial real estate, etc. Same for shipping where relevant	We filled in ND2 because the features of M.7A.13 refer to the underlying property and, because Belgium has general mortgages, it can not be applied to individual loans as all properties cover for all loans.
HG.1.13	Hedging Strategy (please explain how you address interest rate and currency risk)	Interest rate risk is monitored using NPV tests described by the regulator (NBB). Hedging is currently done with overcollateral. There remains the possibility to use swaps, as described in the Belgian covered bond legislation. No currency risk is expected as both assets and liabilities are in euro.
HG.1.14	Non-performing loans	Loans that are more than 90 days past due.
HG.1.15	Valuation Method	Sale price of the properties is compared to the a statistical pricing model for Belgium. When the sale price is higher than the top range of the model outcome, an expert valuation is done.
OHG.1.1	NPV assumptions (when stated)	The current interest is used ; no parallel shift of the interest rate curve is assumed.
OHG.1.2		
OHG.1.3		
OHG.1.4		
OHG.1.5		
OHG.1.6		
OHG.1.7		
2. Glossary - ESG items (optional)		Definition
HG.2.1	Sustainability - strategy pursued in the cover pool	
HG.2.2	Subsidised Housing (definitions of affordable, social housing)	
HG.2.3	New Property and Existing Property	
OHG.2.1	Indication of proxy usage for ESG-related data (indicator, methodology, timing, share of proxy)	
OHG.2.2		
OHG.2.3		
OHG.2.4		
OHG.2.5		
OHG.2.6		
OHG.2.7		
OHG.2.8		
OHG.2.9		
OHG.2.10		
OHG.2.11		
OHG.2.12		
3. Reason for No Data		Value
HG.3.1	Not applicable for the jurisdiction	ND1
HG.3.2	Not relevant for the issuer and/or CB programme at the present time	ND2
HG.3.3	Not available at the present time	ND3
OHG.3.1	Confidential Information	ND4
OHG.3.2		
OHG.3.3		
4. Glossary - Extra national and/or Issuer Items		Definition
HG.4.1	Other definitions deemed relevant	
OHG.4.1		
OHG.4.2		
OHG.4.3		
OHG.4.4		
OHG.4.5		



EUR 10 Billion Mortgage Pandbrieven Programme

Reporting Date

Reporting Date 31/08/2024

Contact Details:

Head of ALM Treasury

GOOSSE Philippe + 32 2 565 22 philippe.goosse@bnpparibasfortis.com

Asset Based Funding

VERVAEKE Johan +32 2 565 66 74 johan.vervaeke@bnpparibasfortis.com

Asset Based Solutions (cover pool and managen

MEESTER Oscar + 32 2 565 32 91 oscar.meester@bnpparibasfortis.com

Website

<https://www.bnpparibasfortis.com/>

Remark

The investor report is provided in pdf and excel-format.
The excel-format has been provided for information purposes only and in case of contradiction between the pdf and excel-format, the pdf-format will prevail.



BNP PARIBAS Residential Mortgage Pandbrieven Prog
FORTIS

Covered Bond Emmission

Outstanding Series

Series	ISIN	Amount	Issue Date	Maturity Date	Currency	Coupon Type	Coupon	Day Count	Next Interest Payment Date	Remaining Average Life *	Extended Maturity Date
BD@138090	BE0002274430	500,000,000	23/03/2017	23/09/2024	EUR	Fixed	0.50 %	NACT	23/09/2024	0.06	23/09/2025
BD@150169	BE0002586643	750,000,000	22/03/2018	22/03/2028	EUR	Fixed	0.88 %	NACT	22/03/2025	3.56	22/03/2029
BD@153515	BE0002614924	500,000,000	04/10/2018	04/10/2025	EUR	Fixed	0.63 %	NACT	04/10/2024	1.09	04/10/2026
BD@258179	BE0002974559	1,000,000,000	30/10/2023	30/10/2028	EUR	Fixed	3.75 %	NACT	30/10/2024	4.17	30/10/2029
		2,750,000,000									

Totals

Total Outstanding (in EUR):	2,750,000,000
Current Weighted Average Fixed Coupon:	1.81 %
Weighted Average Remaining Average Life*	2.70

* At Reporting Date until Maturity Date



Ratings

1. BNP Paribas Fortis Bank Senior Unsecured Ratings

Rating Agency	Long Term Rating	Outlook	Short Term Rating
Fitch	AA-	stable	F1+
Moody's	A2	stable	P-1
Standard and Poor's	A+	stable	A-1

2. BNP Paribas Fortis Mortgage Pandbrieven Ratings

Rating Agency	Long Term Rating	Outlook
Fitch	NR	
Moody's	Aaa	stable
Standard and Poor's	AAA	stable



Test Summary

(all amounts in EUR unless stated otherwise)

1. Outstanding Mortgage Pandbrieven and Cover Assets

Outstanding Mortgage Pandbrieven	2,750,000,000 (I)
Nominal Balance Residential Mortgage Loans	3,578,906,613 (II)
Nominal Balance Public Finance Exposures	20,000,000 (III)
Nominal Balance Financial Institution Exposures	158,560,863 (IV)
Nominal OC Level [(II)+(III)+(IV)]/(I)-1	36.64%

2. Residential Mortgage Loans Cover Test

Value of the Residential Loans (as defined in Royal Decree Art 6 Paraf 1)	2,913,724,064 (V)	
Ratio Value of Resid. Mortgage Loans / Mortgage Pandbrieven Issued (V) / (I)	105.95%	Limit
> > > Cover Test Royal Decree Art 5 Paraf 1	Passed	85%

3. Total Asset Cover Test

Value of Public Finance Exposures (definition Royal Decree)	18,807,609 (VI)	
Value of Financial Institution Exposures (definition Royal Decree)	158,560,863 (VII)	
Principal Used for covering Interest in the 'Interest and Principal Coverage Tes	0 (VIIbis)	
Value of the Residential Loans (as defined in Royal Decree Art 6 Paraf 1)	2,913,724,064	
Ratio Value All Cover Assets / Mortgage Pandbrieven Issued [V+VI+VII+VIIbis	112.40%	Limit
> > > Cover Test Royal Decree Art 5 Paraf 2	Passed	100%

4. Interest and Principal Coverage Test

Interest Proceeds Cover Assets	548,361,650 (VIII)
Total Interest Proceeds Residential Mortgage Loans	548,361,650
Total Interest Proceeds Public Finance Exposures	0
Total Interest Proceeds Financial Institution Exposures	0
Impact Derivatives	0
Principal Proceeds Cover Assets	3,091,092,535 (IX)
Value of the Residential Loans (as defined in Royal Decree Art 6 Paraf 1)	2,913,724,064
Total Principal Proceeds Public Finance Exposures	18,807,609
Total Principal Proceeds Financial Institution Exposures	158,560,863
Impact Derivatives	0
Interest Requirement Covered Bonds	222,500,000 (X)
Costs, Fees and expenses Covered Bonds	20,221,307 (XI)
Principal Requirement Covered Bonds	2,750,000,000 (XII)
Total Surplus (+) / Deficit (-) (VIII)+(IX)-(X)-(XI)-(XII)	646,732,878
> > > Cover Test Royal Decree Art 5 paraf 3	Passed

5. Liquidity Tests

Cumulative Cash Inflow Next 180 Days	360,415,072 (XIII)
Cumulative Cash Outflow Next 180 Days	-46,877,617 (XIV)
Liquidity Surplus (+) / Deficit (-) (XIII)+(XIV)	313,537,455
> > > Liquidity Test Royal Decree Art 7 paraf 1	Passed
MtM Liquid Bonds	17,836,235 (XV)
Interest Payable on Mortgage Pandbrieven next 3 months	43,125,000 (XVI)
Excess Coverage Interest Mortgage Pandbrieven by Liquid Bonds (XV)-(XVI)	-25,288,765 (XVII)

Cover Pool Summary

Portfolio Cut-off 31/08/2024 (All Amounts are in Euro)

1. Residential Mortgage Loans

See Stratification Tables Mortgages for m

Outstanding Balance of Residential Mortgage Loans at the Cut-off Date	3,578,906,613
Principal Redemptions between Cut-off Date and Maturity	3,578,906,613
Interest Payments between Cut-off Date and Maturity Date	548,361,650
Number of borrowers	26,599
Number of loans	50,476
Average Outstanding Balance per borrower	134,550
Average Outstanding Balance per loan	70,903
Weighted average Current Loan to Current Value	49.45%
Weighted average Current Loan to Original Value	57.61%
Weighted average seasoning (in Years)	4.78
Weighted average remaining maturity (in years, at 0% CPR)	14.94
Weighted average initial maturity (in years, at 0% CPR)	19.72
Percentage of Fixed Rate Loans	92.13%
Percentage of Variable Rate Loans	7.87%
Weighted average interest rate	1.87%
Weighted average interest rate Fixed Rate Loans	1.84%
Weighted average interest rate Variable Rate Loans	2.20%
Weighted Remaining average life (in years, at 0% CPR)	7.87
Weighted Remaining average life to interest reset (in years, at 0% CPR)	7.25
% Construction Loans	0.01%

2. Registered Cash

Registered Cash Proceeds under the Residential Mortgage Loans 158,560,863

3. Public Sector Exposure (Liquid Bond Positions)

	Position	Position	Position	Position
ISIN	BE0000337460	BE0000345547	BE0000349580	BE0000352618
Issuer Name	Kingdom of Belgium	Kingdom of Belgium	Kingdom of Belgium	Kingdom of Belgium
Series	ERROR 23	ERROR 23	ERROR 23	BGB 1 22/06/2026
Currency	EUR	EUR	EUR	EUR
Nominal Amount	2,000,000	6,000,000	7,000,000	5,000,000
Issue Date	12/10/2018	21/03/2018	13/10/2023	26/01/2022
Maturity Date	22/06/2026	22/06/2028	22/06/2030	22/10/2031
Coupon Type	F	F	F	F
Coupon	1.00 %	0.80 %	0.10 %	0.00 %
Standar & Poor's Ra	AA	AA	AA	AA
Fitch Rating	AA-	AA-	AA-	AA-
Moody's Rating	Aa3	Aa3	Aa3	Aa3

4. Derivatives

None

5. Prepayments Last Calendar Month

5,734,331 EUR



Stratification Tables

Portfolio Cut-off [31/08/2024

1. Geographic distribution

	In EUR	In %	In number of loans	In %
Antwerpen	600,794,393.34	16.79 %	8,116	16.08 %
Oost-Vlaanderen	526,272,122.11	14.70 %	7,865	15.58 %
Vlaams-Brabant	481,740,692.32	13.46 %	6,420	12.72 %
West-Vlaanderen	383,853,515.88	10.73 %	6,276	12.43 %
Brussels	363,419,692.31	10.15 %	3,824	7.58 %
Liège	285,348,814.00	7.97 %	4,225	8.37 %
Limburg	246,986,317.58	6.90 %	3,977	7.88 %
Hainaut	225,420,905.46	6.30 %	3,534	7.00 %
Brabant Wallon	196,314,064.19	5.49 %	2,421	4.80 %
Namur	154,599,146.88	4.32 %	2,235	4.43 %
Luxembourg	109,217,688.48	3.05 %	1,504	2.98 %
Other	4,939,260.90	0.14 %	79	0.16 %
Total	3,578,906,613.45	100.00 %	50,476	100.00 %

2. Seasoning

In Years	In EUR	In %	In number of loans	In %
<=1	169,276,440.16	4.73 %	1,263	2.50 %
>1 and <=2	299,020,896.25	8.36 %	2,395	4.74 %
>2 and <=3	550,448,246.99	15.38 %	5,090	10.08 %
>3 and <=4	727,813,970.36	20.34 %	7,429	14.72 %
>4 and <=5	373,976,187.06	10.45 %	4,595	9.10 %
>5 and <=6	281,044,191.64	7.85 %	4,122	8.17 %
>6 and <=7	268,032,969.33	7.49 %	4,225	8.37 %
>7 and <=8	363,990,382.46	10.17 %	6,953	13.77 %
>8 and <=9	328,732,613.08	9.19 %	8,025	15.90 %
>9 and <=10	185,207,879.57	5.17 %	5,301	10.50 %
>10 and <=11	7,320,102.61	0.20 %	189	0.37 %
>11 and <=12	3,407,984.62	0.10 %	113	0.22 %
>12 and <=13	1,405,219.20	0.04 %	74	0.15 %
>13 and <=14	4,268,661.77	0.12 %	202	0.40 %
>14 and <=15	8,990,156.24	0.25 %	261	0.52 %
>15 and <=16	2,373,994.14	0.07 %	79	0.16 %
>16 and <=17	487,156.28	0.01 %	12	0.02 %
>17 and <=18	256,101.63	0.01 %	16	0.03 %
>18 and <=19	1,133,074.98	0.03 %	50	0.10 %
>19 and <=20	1,173,987.68	0.03 %	58	0.11 %
>20 and <=21	265,613.51	0.01 %	17	0.03 %
>21 and <=22	262,761.25	0.01 %	3	0.01 %
>22 and <=23	905.11	0.00 %	1	0.00 %
>23 and <=24	7,521.99	0.00 %	1	0.00 %
>24 and <=25	9,595.54	0.00 %	2	0.00 %
Total	3,578,906,613.45	100.00 %	50,476	100.00 %

3. Remaining term to maturity

In Years	In EUR	In %	In number of loans	In %
<0	620,000.00	0.02 %	153	0.30 %
<=1	26,112,395.86	0.73 %	2,647	5.24 %
>1 and <=2	50,849,368.87	1.42 %	3,116	6.17 %
>2 and <=3	54,653,377.49	1.53 %	2,390	4.73 %
>3 and <=4	61,104,202.12	1.71 %	2,231	4.42 %
>4 and <=5	77,190,312.89	2.16 %	2,191	4.34 %
>5 and <=6	90,056,010.50	2.52 %	2,312	4.58 %
>6 and <=7	101,262,827.72	2.83 %	2,175	4.31 %
>7 and <=8	111,160,785.34	3.11 %	2,041	4.04 %
>8 and <=9	106,039,830.74	2.96 %	1,861	3.69 %
>9 and <=10	122,324,573.24	3.42 %	1,931	3.83 %
>10 and <=11	164,205,942.16	4.59 %	2,545	5.04 %
>11 and <=12	168,469,465.31	4.71 %	2,310	4.58 %
>12 and <=13	178,937,602.27	5.00 %	2,243	4.44 %
>13 and <=14	162,786,563.93	4.55 %	1,871	3.71 %
>14 and <=15	138,428,714.90	3.87 %	1,680	3.33 %
>15 and <=16	204,933,677.60	5.73 %	2,330	4.62 %
>16 and <=17	295,648,439.81	8.26 %	3,087	6.12 %
>17 and <=18	260,721,883.22	7.28 %	2,471	4.90 %
>18 and <=19	144,443,502.29	4.04 %	1,312	2.60 %
>19 and <=20	135,141,619.62	3.78 %	1,224	2.42 %
>20 and <=21	147,082,489.86	4.11 %	1,269	2.51 %
>21 and <=22	296,175,751.46	8.28 %	2,082	4.12 %
>22 and <=23	210,981,882.36	5.90 %	1,396	2.77 %
>23 and <=24	127,272,685.94	3.56 %	769	1.56 %
>24 and <=25	96,698,985.38	2.70 %	542	1.07 %
>25 and <=26	1,630,448.75	0.05 %	11	0.02 %
>26 and <=27	6,712,050.28	0.19 %	45	0.09 %
>27 and <=28	32,193,715.72	0.90 %	192	0.38 %
>28 and <=29	3,754,765.38	0.10 %	23	0.05 %
>29 and <=30	1,312,742.44	0.04 %	6	0.01 %
Total	3,578,906,613.45	100.00 %	50,476	100.00 %

4. Original term to maturity

In Years	In EUR	In %	In number of loans	In %
<=1	690.27	0.00 %	5	0.01 %
>1 and <=2	2,649,095.00	0.07 %	28	0.06 %
>2 and <=3	4,469,550.64	0.12 %	50	0.10 %
>3 and <=4	3,235,376.85	0.09 %	50	0.10 %
>4 and <=5	29,289,774.67	0.82 %	259	0.51 %
>5 and <=6	3,525,118.88	0.10 %	118	0.23 %
>6 and <=7	5,523,079.25	0.15 %	180	0.36 %
>7 and <=8	6,013,365.52	0.17 %	250	0.50 %
>8 and <=9	11,569,848.77	0.32 %	687	1.36 %
>9 and <=10	214,738,049.88	6.00 %	8,906	17.64 %
>10 and <=11	23,215,913.30	0.65 %	1,523	3.02 %
>11 and <=12	44,998,275.75	1.26 %	1,206	2.39 %
>12 and <=13	148,766,525.02	4.16 %	3,590	7.11 %
>13 and <=14	24,436,980.39	0.68 %	510	1.01 %
>14 and <=15	401,915,536.62	11.23 %	6,769	13.41 %
>15 and <=16	33,571,646.83	0.94 %	510	1.01 %
>16 and <=17	50,097,721.18	1.40 %	699	1.38 %
>17 and <=18	204,419,056.41	5.71 %	2,764	5.48 %
>18 and <=19	31,473,203.79	0.88 %	436	0.86 %
>19 and <=20	920,505,118.42	25.72 %	10,169	20.15 %
>20 and <=21	62,456,908.10	1.75 %	706	1.40 %
>21 and <=22	28,509,906.92	0.80 %	313	0.62 %
>22 and <=23	37,004,467.83	1.03 %	399	0.79 %
>23 and <=24	18,944,590.69	0.53 %	231	0.46 %
>24 and <=25	1,141,464,717.01	31.89 %	9,015	17.86 %
>25 and <=26	62,984,214.78	1.76 %	596	1.18 %
>26 and <=27	3,800,264.27	0.11 %	33	0.07 %
>27 and <=28	1,107,473.22	0.03 %	8	0.02 %
>28 and <=29	4,634,803.55	0.13 %	33	0.07 %
>29 and <=30	52,038,411.94	1.45 %	414	0.82 %
>30 and <=31	1,334,089.59	0.04 %	15	0.03 %
>39 and <=40	212,838.11	0.01 %	4	0.01 %
3,578,906,613.45	100.00 %	50,476	100.00 %	

5. Origination Year

Year	In EUR	In %	In number of loans	In %
2000	17,117.53	0.00 %	3	0.01 %
2001	905.11	0.00 %	1	0.00 %
2002	250,000.00	0.01 %	2	0.00 %
2003	171,507.66	0.00 %	5	0.01 %
2004	394,004.63	0.01 %	28	0.06 %
2005	1,409,895.63	0.04 %	72	0.14 %
2006	709,089.75	0.02 %	28	0.06 %
2007	204,134.44	0.01 %	10	0.02 %
2008	821,216.79	0.02 %	23	0.05 %
2009	5,339,790.70	0.15 %	153	0.30 %
2010	7,364,211.38	0.21 %	262	0.52 %
2011	3,243,521.61	0.09 %	161	0.32 %
2012	1,669,952.83	0.05 %	61	0.12 %
2013	3,622,586.64	0.10 %	112	0.22 %
2014	23,514,218.83	0.66 %	842	1.67 %
2015	251,534,179.34	7.03 %	6,534	12.94 %
2016	428,300,639.89	11.97 %	9,739	19.29 %
2017	260,206,800.78	7.27 %	4,673	9.26 %
2018	240,298,574.13	6.71 %	3,562	7.06 %
2019	424,560,117.83	11.86 %	5,871	11.63 %
2020	360,734,008.47	10.08 %	4,034	7.99 %
2021	759,274,320.40	21.22 %	7,563	14.98 %
2022	483,359,901.55	13.51 %	4,271	8.46 %
2023	246,077,592.31	6.88 %	1,917	3.80 %
2024	75,828,325.22	2.12 %	549	1.09 %
3,578,906,613.45	100.00 %	50,476	100.00 %	

6. Outstanding Loan Balance by Borrower

In EUR * 1000	In EUR	In %	n number of Borrowers	In %
<=100	532,760,284.42	14.89 %	13,116	49.31 %
>100 and <=200	1,080,672,726.06	30.20 %	7,386	27.77 %
>200 and <=300	912,253,990.40	25.49 %	3,745	14.08 %
>300 and <=400	481,078,161.47	13.44 %	1,407	5.29 %
>400	572,141,451.10	15.99 %	945	3.55 %
3,578,906,613.45	100.00 %	26,599	100.00 %	

7. Interest Rate

	In EUR	In %	In number of loans	In %
0 - 0.5%	828,202.48	0.02 %	28	0.06 %
0.5 - 1%	169,414,586.42	4.73 %	1,755	3.48 %
1 - 1.5%	1,079,741,688.88	30.17 %	13,436	26.62 %
1.5 - 2%	1,489,200,972.95	41.61 %	25,212	49.95 %
2 - 2.5%	274,586,042.50	7.67 %	3,920	7.77 %
2.5 - 3%	180,317,619.66	5.04 %	2,239	4.44 %
3 - 3.5%	209,514,356.93	5.85 %	1,699	3.37 %
3.5 - 4%	122,884,605.69	3.43 %	1,189	2.36 %
4 - 4.5%	32,414,709.31	0.91 %	444	0.88 %
4.5 - 5%	6,152,270.56	0.17 %	147	0.29 %
5 - 5.5%	6,223,600.71	0.17 %	142	0.28 %
5.5 - 6%	4,113,548.70	0.11 %	151	0.30 %
6 - 6.5%	2,706,454.24	0.08 %	76	0.15 %
6.5 - 7%	605,197.54	0.02 %	30	0.06 %
7 - 7.5%	200,625.45	0.01 %	7	0.01 %
7.5 - 8%	2,131.43	0.00 %	1	0.00 %
3,578,906,613.45	100.00 %	50,476	100.00 %	

8. Interest Rate Type

	In EUR	In %	In number of loans	In %
Fixed	3,297,086,965.36	92.13 %	47,545	94.19 %
Variable	2,567,013.97	0.07 %	110	0.22 %
Variable With Cap	279,252,634.12	7.80 %	2,821	5.59 %
	3,578,906,613.45	100.00 %	50,476	100.00 %

9. Next Reset Date

	In EUR	In %	In number of loans	In %
2024	39,669,653.38	1.11 %	448	0.89 %
2025	52,672,622.41	1.47 %	656	1.30 %
2026	15,660,413.56	0.44 %	175	0.35 %
2027	11,768,181.09	0.33 %	125	0.25 %
2028	24,579,851.20	0.69 %	250	0.50 %
2029	25,476,612.92	0.71 %	270	0.53 %
2030	146,333.39	0.00 %	5	0.01 %
2031	38,476,505.44	1.08 %	246	0.49 %
2032	24,228,127.05	0.68 %	145	0.29 %
2033	3,613,193.36	0.10 %	45	0.09 %
2034	22,778,800.10	0.64 %	259	0.51 %
2035	5,402,057.25	0.15 %	40	0.08 %
2036	6,923,867.99	0.19 %	53	0.11 %
2037	1,298,469.53	0.04 %	13	0.03 %
2038	65,436.50	0.00 %	1	0.00 %
Fixed To Maturity	3,306,146,488.28	92.38 %	47,745	94.59 %
	3,578,906,613.45	100.00 %	50,476	100.00 %

10. Interest Payment Frequency

	In EUR	In %	In number of loans	In %
Monthly	3,578,906,613.45	100.00 %	50,476	100.00 %
	3,578,906,613.45	100.00 %	50,476	100.00 %

11. Repayment Type

	In EUR	In %	In number of loans	In %
Annuity	3,452,872,869.06	96.48 %	48,988	97.05 %
Interest only	93,075,587.00	2.60 %	636	1.26 %
Linear	32,958,157.39	0.92 %	852	1.69 %
	3,578,906,613.45	100.00 %	50,476	100.00 %

12. Current Loan to Current Value (LTV)

	In EUR	In %	In number of loans	In %
0-10%	145,130,708.89	4.06 %	9,160	18.15 %
11-20%	271,225,601.11	7.58 %	6,590	13.06 %
21-30%	384,097,174.34	10.73 %	6,511	12.90 %
31-40%	474,413,388.64	13.26 %	6,627	13.13 %
41-50%	560,791,621.17	15.67 %	6,499	12.88 %
51-60%	518,078,563.26	14.48 %	5,299	10.50 %
61-70%	497,059,398.87	13.89 %	4,537	8.99 %
71-80%	386,993,483.44	10.81 %	3,031	6.00 %
81-90%	242,072,121.85	6.76 %	1,582	3.13 %
91-100%	78,445,103.22	2.19 %	444	0.88 %
101-110%	3,645,673.36	0.10 %	35	0.07 %
111-120%	4,813,131.79	0.13 %	42	0.08 %
>120%	12,140,643.51	0.34 %	119	0.24 %
	3,578,906,613.45	100.00 %	50,476	100.00 %

13. Current Loan to Original Value (LTOV)

	In EUR	In %	In number of loans	In %
0-10%	73,676,875.65	2.06 %	6,287	12.46 %
11-20%	162,533,234.05	4.54 %	5,134	10.17 %
21-30%	257,180,058.29	7.19 %	5,340	10.58 %
31-40%	358,746,257.70	10.02 %	5,834	11.56 %
41-50%	464,290,286.95	12.97 %	6,176	12.24 %
51-60%	494,382,170.10	13.81 %	5,883	11.66 %
61-70%	576,733,058.67	16.11 %	6,085	12.06 %
71-80%	608,231,038.83	16.99 %	5,456	10.81 %
81-90%	429,306,815.69	12.00 %	3,153	6.25 %
91-100%	114,567,947.07	3.20 %	779	1.54 %
101-110%	14,149,843.37	0.40 %	127	0.25 %
111-120%	4,045,478.72	0.11 %	41	0.08 %
>120%	21,063,548.36	0.59 %	181	0.36 %
	3,578,906,613.45	100.00 %	50,476	100.00 %

14. Loan to Mortgage Inscription Ratio (LTM)

	In EUR	In %	In number of loans	In %
1-20%	35,895,488.88	1.00 %	4,466	8.85 %
21-40%	99,129,190.42	2.77 %	4,278	8.48 %
41-60%	215,943,797.96	6.03 %	4,922	9.75 %
61-80%	402,446,194.08	11.24 %	5,941	11.77 %
81-100%	540,671,837.08	15.11 %	5,783	11.46 %
101-120%	141,070,992.47	3.94 %	2,521	4.99 %
121-140%	161,188,909.99	4.50 %	2,643	5.24 %
141-160%	184,109,464.41	5.14 %	2,614	5.18 %
161-180%	280,262,893.60	7.83 %	3,093	6.13 %
181-200%	308,089,471.84	8.61 %	2,924	5.79 %
201-300%	557,287,796.54	15.57 %	6,075	12.04 %
301-400%	260,156,368.90	7.27 %	2,324	4.60 %
401-500%	107,980,426.35	3.02 %	934	1.85 %
>500%	284,673,780.93	7.95 %	1,958	3.88 %
	3,578,906,613.45	100.00 %	50,476	100.00 %

15. Distribution of Average Life to Final Maturity (at 0% CPR)

In Years	In EUR	In %	In number of loans	In %
>=0 and <=1	78,297,775.35	2.19 %	5,971	11.83 %
>1 and <=2	110,562,409.26	3.09 %	4,436	8.79 %
>2 and <=3	163,897,080.52	4.58 %	4,484	8.88 %
>3 and <=4	204,900,422.95	5.73 %	4,117	8.16 %
>4 and <=5	205,365,586.72	5.74 %	3,467	6.87 %
>5 and <=6	296,149,664.60	8.27 %	4,394	8.71 %
>6 and <=7	337,418,794.13	9.43 %	4,252	8.42 %
>7 and <=8	305,312,173.03	8.53 %	3,535	7.00 %
>8 and <=9	504,573,099.76	14.10 %	5,240	10.38 %
>9 and <=10	280,600,861.71	7.84 %	2,698	5.35 %
>10 and <=11	326,578,826.27	9.13 %	2,846	5.64 %
>11 and <=12	444,047,109.11	12.41 %	3,064	6.07 %
>12 and <=13	107,027,023.88	2.99 %	714	1.41 %
>13 and <=14	168,862,377.50	4.72 %	980	1.94 %
>14 and <=15	13,639,950.64	0.38 %	82	0.16 %
>15 and <=16	24,274,199.02	0.68 %	152	0.30 %
>16 and <=17	7,218,836.62	0.20 %	43	0.09 %
>17 and <=18	180,422.38	0.01 %	1	0.00 %
	3,578,906,613.45	100.00 %	50,476	100.00 %

16. Distribution of Average Life To Interest Reset Date (at 0% CPR)

In Years	In EUR	In %	In number of loans	In %
Fixed To Maturity	3,306,146,488.28	92.38 %	47,745	94.59 %
>=0 and <=1	102,406,053.17	2.86 %	1,219	2.42 %
>1 and <=2	28,593,914.18	0.80 %	306	0.61 %
>2 and <=3	38,973,700.60	1.09 %	404	0.80 %
>3 and <=4	59,037,746.09	1.65 %	368	0.73 %
>4 and <=5	17,500,563.16	0.49 %	205	0.41 %
>5 and <=6	20,125,563.92	0.56 %	177	0.35 %
>7 and <=8	65,436.50	0.00 %	1	0.00 %
>6 and <=7	6,057,147.55	0.17 %	51	0.10 %
	3,578,906,613.45	100.00 %	50,476	100.00 %

17. Occupation Type (Based on Indexed Property Value)

	In EUR	In %	In number of Properties	In %
Owner-occupied	10,305,539,909.44	81.95 %	25,687	80.56 %
Other/No data	2,270,191,005.97	18.05 %	6,197	19.44 %
	12,575,730,915.41	100.00 %	31,884	100.00 %

18. IFRS9 Norms

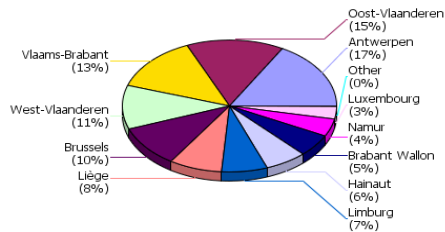
	In EUR	In %	In number of loans	In %
Phase 1	3,227,112,230.00	90.17 %	46,438	92.00 %
Phase 2	351,754,208.46	9.83 %	3,877	7.68 %
Phase 3	40,174.99	0.00 %	3	0.01 %
Other/No data	0.00	0.00 %	158	0.31 %
	3,578,906,613.45	100.00 %	50,476	100.00 %



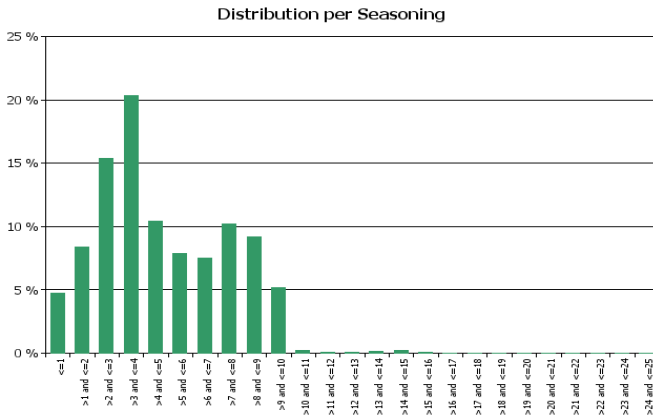
Stratification Tables

Portfolio Cut-off Date 31/08/2024

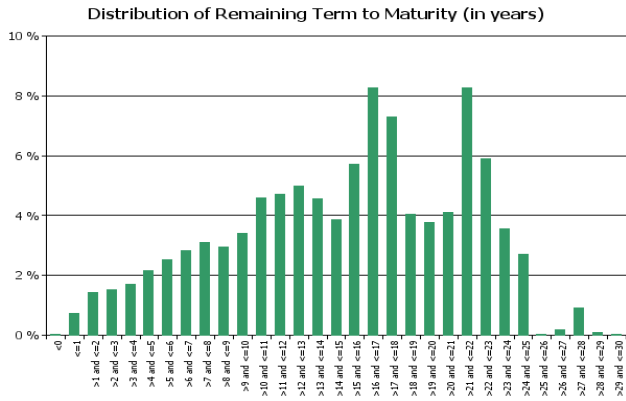
1. Geographic distribution



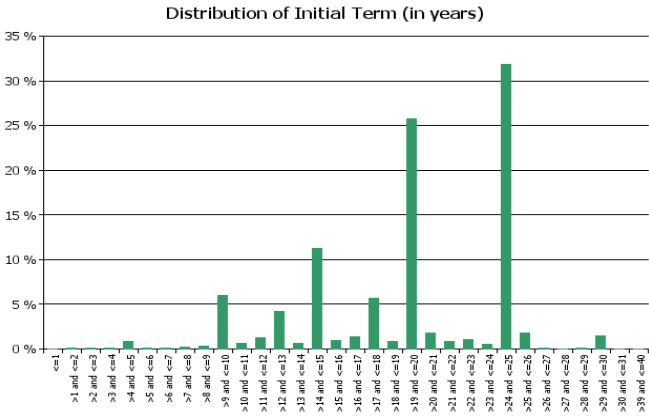
2. Seasoning



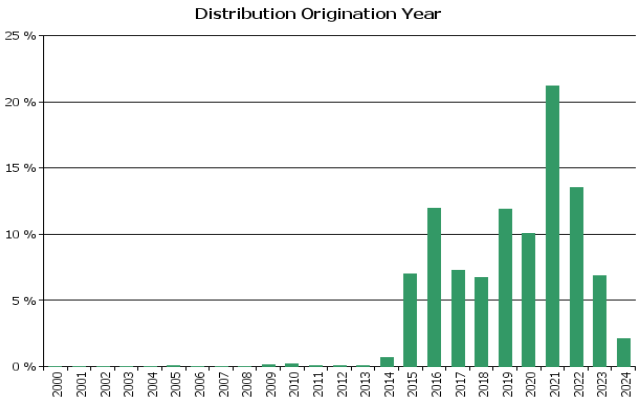
3. Remaining term to maturity



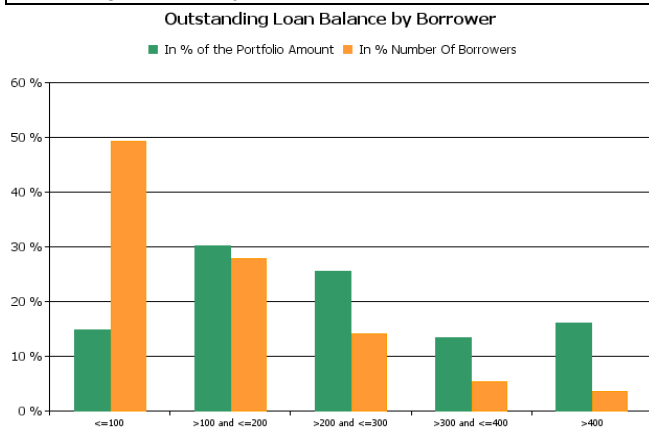
4. Original term to maturity



5. Origination Year

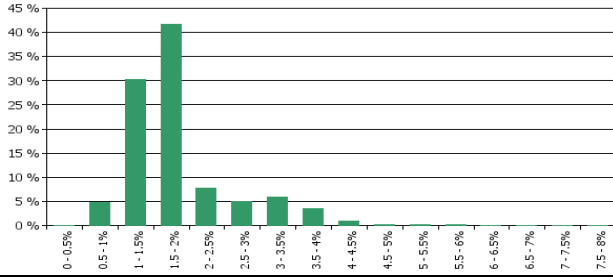


6. Outstanding Loan Balance by Borrower



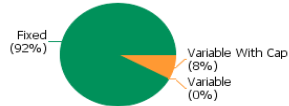
7. Interest Rate

Distribution per Interest Rate



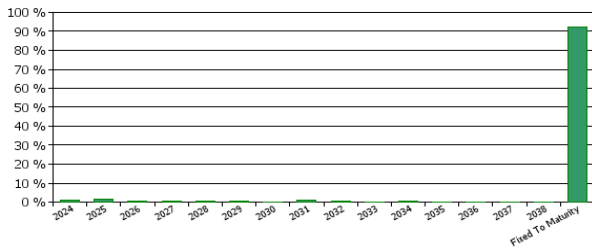
8. Interest Rate Type

Distribution per Interest Type



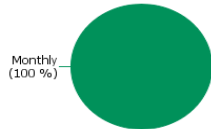
9. Next Reset Date

Next Reset Date



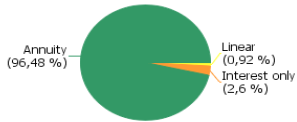
10. Interest Payment Frequency

Distribution per Interest Payment Frequency



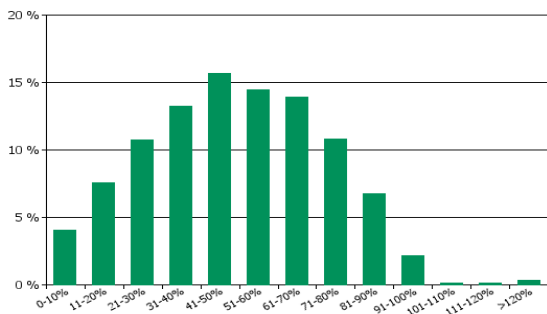
11. Repayment Type

Distribution per Repayment Type

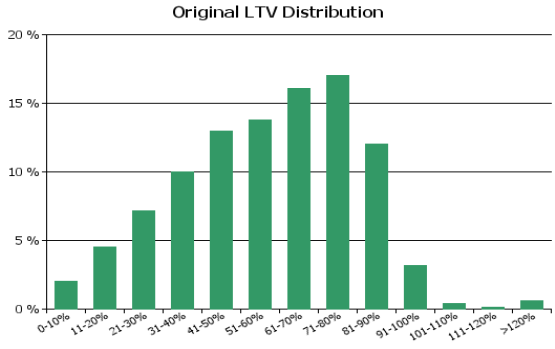


12. Current Loan to Current Value (LTV)

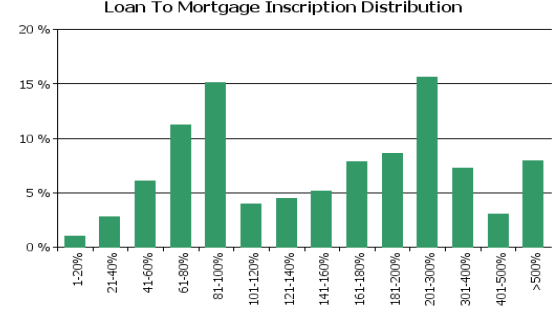
Current LTV Distribution



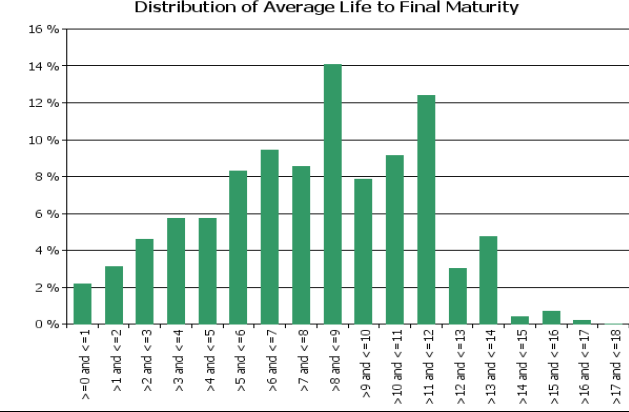
13. Current Loan to Original Value (LTOV)



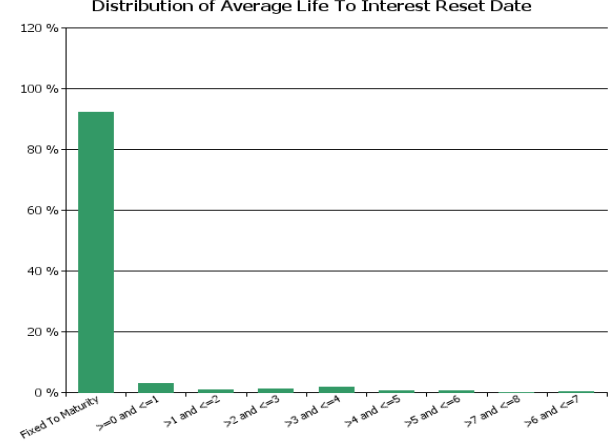
14. Loan to Mortgage Inscription Ratio (LTM)



15. Distribution of Average Life to Final Maturity (at 0% CPR)

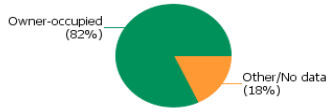


16. Distribution of Average Life To Interest Reset Date (at 0% CPR)



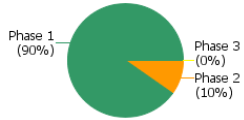
17. Occupation Type (Based on Indexed Property Value)

Distribution per Occupation Type



18. IFRS9 Norms

Distribution per IFRS9 Norm





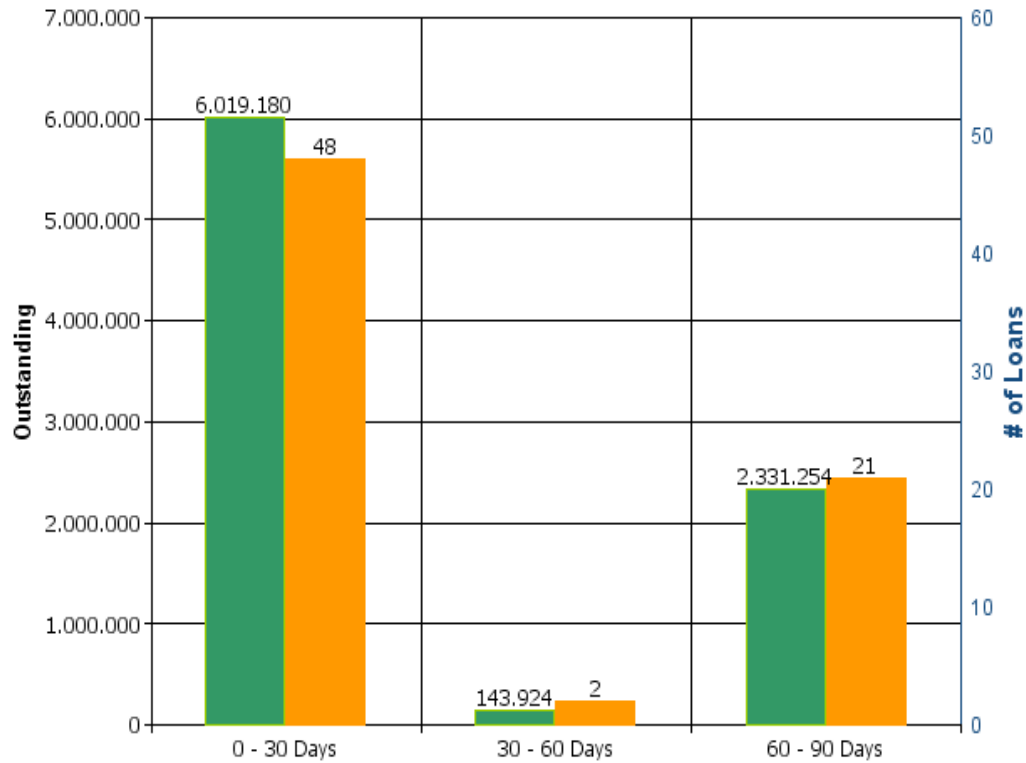
Cover Pool Performance

Portfolio Cut-off Date 31/08/2024

1. Delinquencies (at cut-off date)

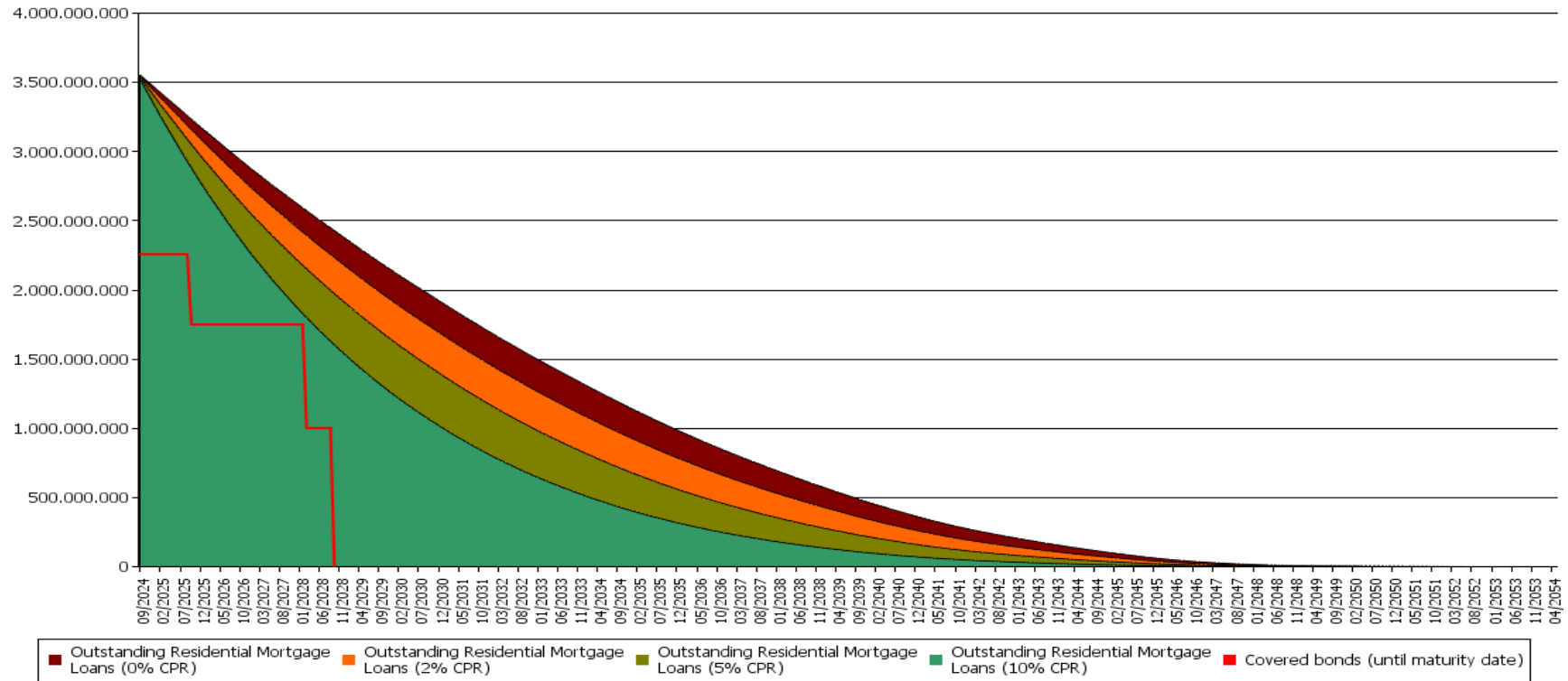
	In EUR	In %	In number of loans	In %
Performing	3,570,412,254.88	99.76 %	50,405	99.86 %
0 - 30 Days	6,019,180.22	0.17 %	48	0.10 %
30 - 60 Days	143,924.02	0.00 %	2	0.00 %
60 - 90 Days	2,331,254.33	0.07 %	21	0.04 %
> 90 Days				
Total	3,578,906,613.45	100.00 %	50,476	100.00 %

Delinquency Outstanding in Euro



01/12/2051	328	882,390	510,801	224,965	57,344
01/01/2052	329	762,518	440,660	193,580	49,135
01/02/2052	330	655,097	377,940	165,605	41,856
01/03/2052	331	553,722	318,947	139,423	35,099
01/04/2052	332	457,116	262,855	114,611	28,731
01/05/2052	333	364,046	208,993	90,902	22,694
01/06/2052	334	281,223	161,172	69,924	17,383
01/07/2052	335	217,104	124,221	53,760	13,310
01/08/2052	336	170,762	97,539	42,105	10,380
01/09/2052	337	148,917	84,917	36,563	8,976
01/10/2052	338	129,871	73,935	31,757	7,764
01/11/2052	339	112,440	63,903	27,378	6,665
01/12/2052	340	96,136	54,547	23,312	5,652
01/01/2053	341	84,110	47,643	20,309	4,903
01/02/2053	342	73,489	41,556	17,670	4,248
01/03/2053	343	63,716	35,975	15,261	3,655
01/04/2053	344	54,370	30,646	12,968	3,092
01/05/2053	345	44,996	25,320	10,688	2,538
01/06/2053	346	36,894	20,726	8,726	2,064
01/07/2053	347	29,546	16,571	6,960	1,639
01/08/2053	348	23,644	13,238	5,546	1,301
01/09/2053	349	17,725	9,908	4,140	967
01/10/2053	350	13,483	7,524	3,136	729
01/11/2053	351	10,199	5,682	2,362	547
01/12/2053	352	7,824	4,351	1,805	416
01/01/2054	353	5,441	3,021	1,250	287
01/02/2054	354	3,052	1,692	698	160
01/03/2054	355	1,528	846	348	79
01/04/2054	356	0	0	0	0
01/05/2054	357	0	0	0	0
		341,375,046,638	303,475,417,608	258,275,751,452	204,393,898,710

Amortisation profiles (all amounts in EUR)





E. Harmonised Transparency Template - Optional ECB - ECAIs Data Disclosure

HTT 2024

Reporting in Domestic Currency: EUR

CONTENT OF TAB E

1. Additional information on the programme
2. Additional information on the swaps
3. Additional information on the asset distribution

Reason for No Data in Worksheet E. Value

Not applicable for the jurisdiction ND1
 Not relevant for the issuer and/or CB programme at the present time ND2
 Not available at the present time ND3
 Confidential ND4

* Local Entity Identifier (LEI) finder: <http://www.lei-lookup.com/#/search>
 ** Weighted Average Maturity = Remainder Term to Maturity

Field Number	1. Additional information on the programme					
	Transaction Counterparties	Name	Legal Entity Identifier (LEI)*			
E.1.1.1	Sponsor (if applicable)					
E.1.1.2	Servicer	BNP Paribas Fortis	KGCEPHLVKVRZY01T647			
E.1.1.3	Back-up servicer					
E.1.1.4	BUS facilitator					
E.1.1.5	Cash manager					
E.1.1.6	Back-up cash manager					
E.1.1.7	Account bank					
E.1.1.8	Standby account bank					
E.1.1.9	Account bank guarantor	Stichting BNPP Fortis Pfandbriefe				
E.1.1.10	Trustee	Representative				
E.1.1.11	Cover Pool Monitor	David De Schacht & Jurgen De				
OE.1.1.1	where applicable - paying agent					
OE.1.1.2						
OE.1.1.3						
OE.1.1.4						
OE.1.1.5						
OE.1.1.6						
OE.1.1.7						
OE.1.1.8						
	2. Additional information on the swaps					
	Swap Counterparties	Guarantor (if applicable)	Legal Entity Identifier (LEI)*	Type of Swap		
E.2.1.1						
E.2.1.2						
E.2.1.3						
E.2.1.4						
E.2.1.5						
E.2.1.6						
E.2.1.7						
E.2.1.8						
E.2.1.9						
E.2.1.10						
E.2.1.11						
E.2.1.12						
E.2.1.13						
E.2.1.14						
E.2.1.15						
E.2.1.16						
E.2.1.17						
E.2.1.18						
E.2.1.19						
E.2.1.20						
E.2.1.21						
E.2.1.22						
E.2.1.23						
E.2.1.24						
E.2.1.25						
OE.2.1.1						
OE.2.1.2						
OE.2.1.3						
OE.2.1.4						
OE.2.1.5						
OE.2.1.6						
OE.2.1.7						
OE.2.1.8						
OE.2.1.9						
OE.2.1.10						
OE.2.1.11						
OE.2.1.12						
OE.2.1.13						
	3. Additional information on the asset distribution					
	1. General Information			Total Assets		
E.3.1.1	Weighted Average Seasonal (years)			4.78		
E.3.1.2	Weighted Average Maturity (years)**			14.94		
OE.3.1.1						
OE.3.1.2						
OE.3.1.3						
OE.3.1.4						
	2. Arrears	% Residential Loans	% Commercial Loans	% Public Sector Assets	% Shogin Loans	% Total Loans
E.3.2.1	1-30 days	0.02%				0.02%
E.3.2.2	30-60 days	0.15%				0.15%
E.3.2.3	60-90 days	0.07%				0.07%
E.3.2.4	90-180 days	0.00%				0.00%
E.3.2.5	>= 180 days	0.00%				0.00%